

## OVERVIEW



Paris-CDG hub is **the main hub** for Europe.

The two other European hubs are based in **Cologne** and **Liège**.

Paris-CDG hub is **the largest FedEx hub outside the U.S.**

## TIMELINE



### 1999

Opening of the FedEx hub at Paris-Charles de Gaulle.  
Maximum sorting capacity of **24,000** packages per hour.



### 2009

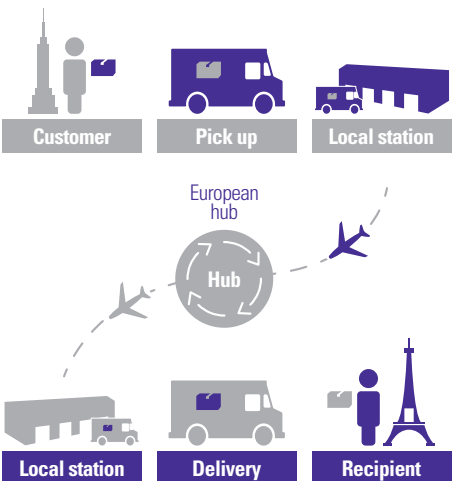
Expansion to increase sorting capacity, especially for heavy freight.  
Maximum sorting capacity of **31,500** packages per hour.



### 2016

Announcement of a new expansion scheduled for 2019 (200 million € investment, new building equipped with a fully automated sorting system, 27,000 m<sup>2</sup>, improvements to handle heavy freight) 40% increase of the maximal packages sorting capacity by 2019.  
Maximum sorting capacity of **51,000** packages per hour.

## PARIS-CDG HUB, AT THE HEART OF EXPRESS TRANSPORT



### Two sorting windows:

- Intercontinental operations from 18:00 to 22:00,
- then, intra-European operations from 23:30 to 4:00 the next morning.



1 Customs clearance while aircraft are still enroute.



2 Offloading of aircrafts and trucks.



3 Shipments are scanned, labelled and sent to the hub's sorting area, depending on their nature and destination.



4 Shipments are loaded on another aircraft or truck to be sent to their destination countries, before reaching a FedEx station.

## KEY FIGURES



### 2,100

employees at Paris-CDG hub



### 300

aircraft movements per week into and outside Europe and the world



Up to

### 1,200

tons of freight handled per day



### 21,750 m<sup>2</sup>

trucking area

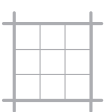


### 7 km

of sorting belt machinery



ISO 14001 certification since 2011



- Total hub surface: **45 ha**
- Buildings: **108,500 m<sup>2</sup>**
- Sorting area: **72,000 m<sup>2</sup>** including **13,000m<sup>2</sup>** for heavyweight and dangerous goods



**Aircraft parking area:** **27** for wide body aircraft and **13** for feeders

### Air fleet passing through Paris-CDG hub:

- **10** Boeing 777
- **10** Boeing 757
- **2** (McDonnell Douglas) MD11
- **3** Airbus A300
- **7** Aerospatiale ATR-72
- **6** Aerospatiale ATR-42
- **1** Brasilia EMB-120