



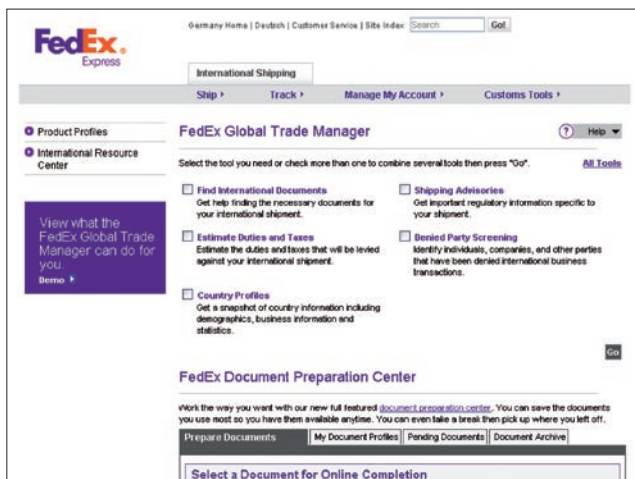
# FedEx® Global Trade Manager

FedEx® Global Trade Manager, at [fedex.com](http://fedex.com), offers customers of all sizes and levels of experience a comprehensive resource for simplifying international shipping.

## Your Free, Online Shipping Assistant

FedEx® Global Trade Manager can save you time. FedEx® Global Trade manager is a web-based service and is available 24 hours a day, 7 days a week.

This will help you complete your international paperwork requirements through [FedEx Ship Manager@fedex.com](mailto:FedEx_Ship_Manager@fedex.com).



## Find International Documents

The right documentation can make all the difference in international shipping. With the free Find International Documents tool, you can locate and print import and export documentation for more than 220 countries. This tool will help facilitate the customer clearance process.

- Provides access to more than 1,300 international shipping and customs forms.
- Reduces the number of delayed international shipments due to insufficient paperwork.
- Provides a tool for your international suppliers to determine the recommended documents for your international shipments.
- Provides online preparation of some of the essential shipping documents.

Whether you're an experienced global shipper or in the initial stages of international trade, FedEx® Global Trade Manager enables you to:

- Find the proper documents required for international shipping.
- Estimate duties and taxes.
- Prepare, save and reuse customs documents online with the Document Preparation Center.
- View advisories concerning your shipment.
- Research country profiles.
- Use product profiles to manage your commodity information.

All of the above features are available direct from the FedEx Ship Manager@fedex.com homepage. The results of your searches are organized into one section with a tab at the top for each feature selected. The resulting document you select can then be easily integrated with your shipping information.

## Estimate Duties and Taxes

This online tool lets you enter shipment-specific information and calculate the estimated duties, taxes and other fees that may be levied against your international shipment.

- Reduce costly returns from international customers by providing pricing estimates that account for duty and tax fees.
- Maintain competitive prices by monitoring international duty and tax estimate changes.
- Easily search tariff classification for the destination country of your products.
- Check quotes from overseas suppliers to see if their duty and tax charges are reasonable compared with your estimates.
- Target promising overseas markets for aligning with suppliers based on estimated duty and tax costs.

### Your FedEx contacts

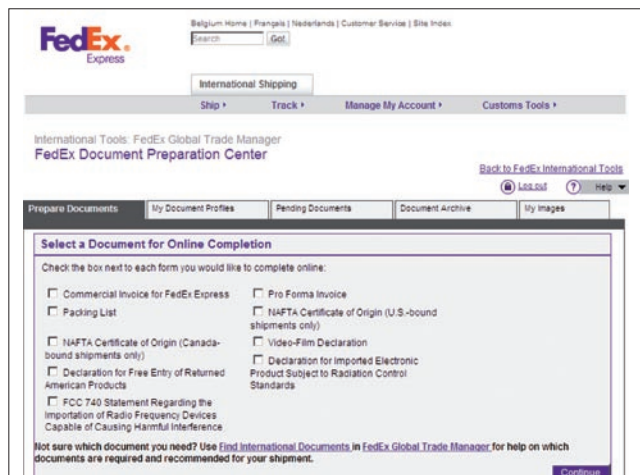
To find out more, call us on:  
**800 33339 (UAE)**  
**17 334448 (Bahrain)**  
**1802233 (Kuwait)**

Or visit our website on:  
**[fedex.com](http://fedex.com)**



## Document Preparation Center

You can prepare, save and reuse customs documents online with the Document Preparation Center. GTM Document Preparation Center (DPC) optimizes the international shipping process and integrates the critical few international tools (document determination and preparation) with FedEx online.



Key benefits include:

- Early access to shipping alerts, prohibits, available services and product profiles.
- Wizard guided document determination and document preparation based on commodity description.
- Re-usable Document Preparation Center (alter, store and re-use required documents).
- Pre-population of required documents from FedEx® Ship Manager at fedex.com.
- Improved commercial invoice and preparation online-upload of images (Logo and Digital Signature).

## Advisories

This feature gives you important regulatory information for the import and export of your transaction, as well as for the commodity you are shipping. Based on the shipment information entered, FedEx® Global Trade Manager prepares a report containing the applicable shipping advisories and prohibits. This helps you comply with the complex regulations sometimes associated with international shipping.

## Country Profiles

The Country Profiles feature gives you an overview of country-specific shipping information and regulatory requirements, as well as demographics, business information and statistics.

### Your FedEx contacts

To find out more, call us on:  
**800 33339 (UAE)**  
**17 334448 (Bahrain)**  
**1802233 (Kuwait)**

Or visit our website on:  
**fedex.com**



## Denied Party Screening

Based on the user's input, Global Trade Manager's Denied Party Screening tool retrieves potential matches from lists of countries, individuals, companies or other organizations who have had economic and trade sanctions imposed against them.<sup>(1)</sup>

## Access our International Resource Centre

This free service provides a comprehensive array of tools and reference materials related to international trade.

- Get shipping assistance using the international shipping reference guide and the international shipping check list.
- Access third-party regulatory sites for information related to international trade and commerce.
- Use our international shipping resources to help you through the process of international shipping.

## Product Profiles

Make using FedEx® Global Trade Manager quicker and more efficient with Product Profiles. It allows you to create, store, edit, sort and group information for up to 500 commodities. You can also upload large commodity databases from a CSV file.

*(1) The data contained herein is not legal advice and should not be relied upon as such. Although every reasonable effort is made to verify and ensure the accuracy, completeness and timeliness of the data, the applicable statutes, regulations and orders are the authoritative sources. No warranty, either express or implied is given by Global Trade Manager with respect to the contents of the data or the accuracy of the search performed. In addition to performing a search on this system, if you have any questions regarding the entity or person with whom you are transacting business, you should obtain specific legal advice before proceeding further.*