

OVERVIEW



Paris-CDG hub is **the main air hub** for Europe.

The two other European air hubs are based in **Cologne** and **Liège**.

Paris-CDG hub is **the largest FedEx air hub outside the U.S.**

TIMELINE



1999

Opening of the FedEx hub at Paris-Charles de Gaulle.
Maximum sorting capacity of **24,000** packages per hour.



2009

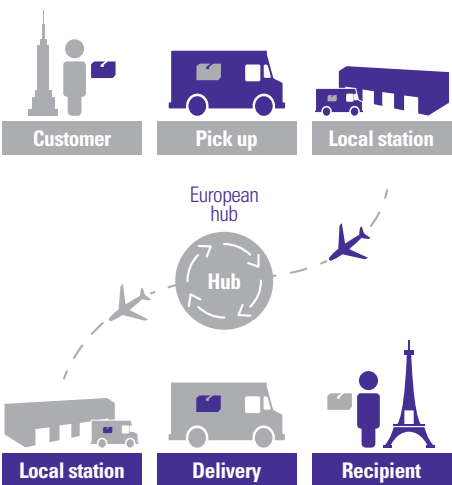
Expansion to increase sorting capacity, especially for heavy freight.
Maximum sorting capacity of **31,500** packages per hour.



2020

Extension project to be fulfilled in 2020 (200 million € investment). New 47,000 m² building equipped with a state-of-the-art automated system providing 46% additional sorting capacity. By the end of 2020 the total sorting capacity will be 68,000 parcels per hour (**46,000** packages and **22,000** small boxes and documents).

PARIS-CDG HUB, AT THE HEART OF EXPRESS TRANSPORT



Two sorting windows:

- Intercontinental operations from 18:00 to 22:00,
- then, intra-European operations from 23:30 to 4:00 the next morning.



1 Customs clearance while aircraft are still en route.



2 Offloading of aircrafts and trucks.



3 Shipments are scanned, labelled and sent to the hub's sorting area, depending on their nature and destination.



4 Shipments are loaded on another aircraft or truck to be sent to their destination countries, before reaching a FedEx station.

KEY FIGURES



2,500

employees at the Paris-CDG location



320

aircraft movements per week to and from Europe and the world



Up to **1,200** tons of freight handled per day
54,000 packages and documents per hour



21,750 m²

trucking area

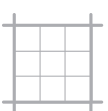


8 km

of sorting belt machinery



ISO 14001 certification since **2011**



- Total hub surface: **45 ha**
- Buildings: **112,000 m²**
- Sorting area: **72,000 m²** including **14,700 m²** for heavyweight and dangerous goods



Aircraft parking area:
35 for wide body aircraft and **11** for feeders

Air fleet passing through Paris-CDG hub:

- **10** Boeing 777
- **2** Boeing 767
- **8** Boeing 757
- **2** (McDonnell Douglas) MD11
- **2** Airbus A300
- **7** Aerospatiale ATR-72
- **6** Aerospatiale ATR-42
- **1** Brasilia EMB-120