



2022

SERVICE & RATE GUIDE

ANGUILLA



Contents

Our FedEx Service and Rate Guide provides you with all the information you need to ship with FedEx. This guide includes an overview of FedEx Express® services, FedEx Express standard list rates effective **January 3rd, 2022**, Anguilla International export services.

The transportation rates and services offered by FedEx Express may be amended, modified or discontinued by FedEx Express at any time with or without notice. Should you have any questions, please visit us at fedex.com/ai.



Services & Rates	4
International	5
• Services	6
• Zones	7
• Export Rates	8 – 14
• Additional Services	15 – 19
• Clearance Services	19
• Customs Clearance Tools	20



Shipping with FedEx	21
FedEx Ship Center Network	22
Online Shipping Tools	23
How to Ship	
• Calculate the Rate	24
• Calculate Dimension Weight	25

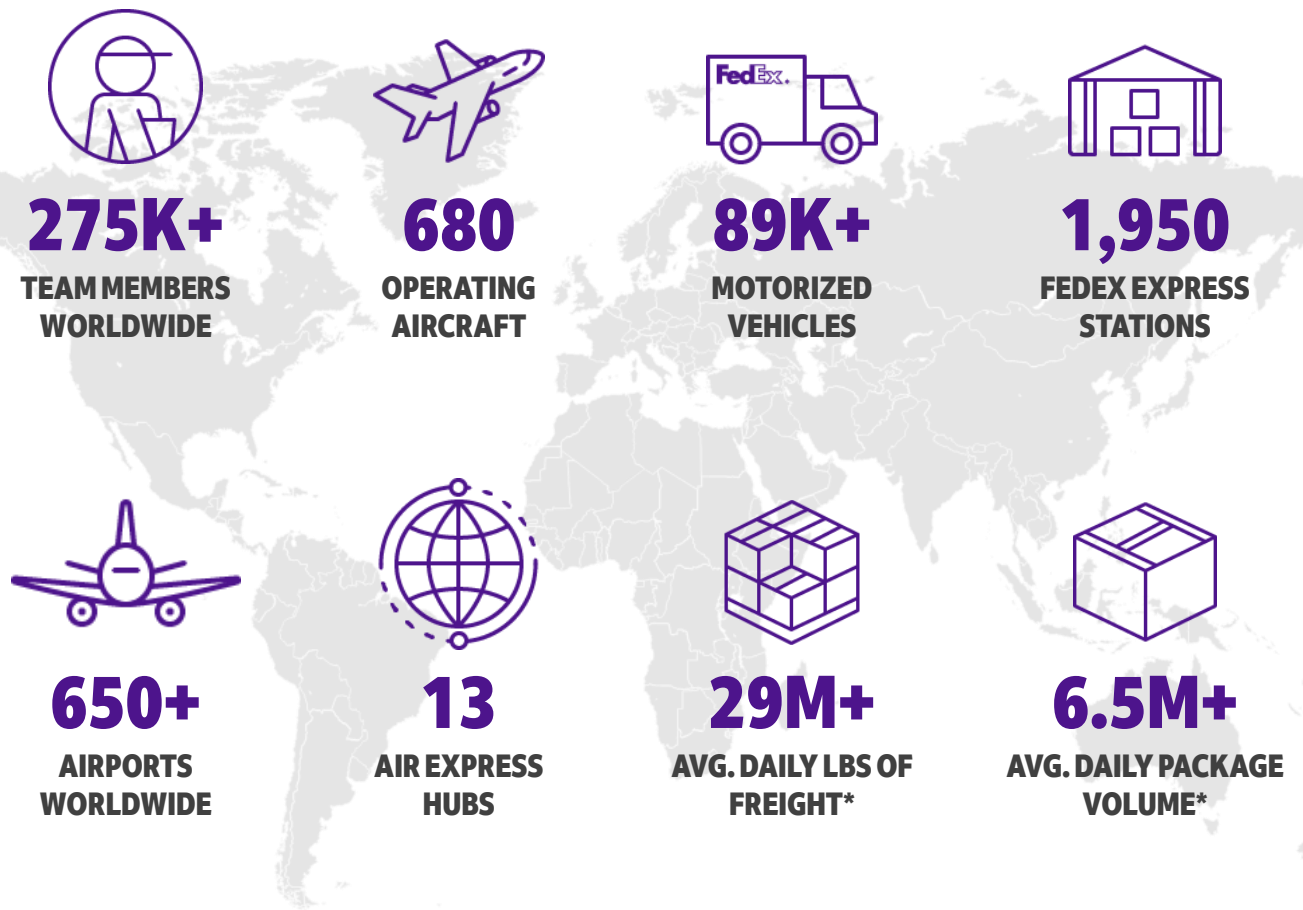


Shipping Resources	26
Contact Us	26
Terms & Conditions	26

FedEx. Where Now Meets Next

At FedEx®, our goal is to support the competitiveness of your company. That is why we support our service portfolio that offers domestic logistic solutions¹, as well as international services in more than 220 countries and territories. Choose the option that best suits your needs, for documents, packages and heavy shipments; according to the urgency. Our extensive global and domestic network connects you quickly and on time to global markets - Guaranteed!²

FedEx Express (Worldwide)



**Based on 255 operating days per year.*

¹ Not all services are offered in all countries. Please contact our Customer Service Center for more information on our services in your country.
² Check the terms of the Money-Back Guarantee at [fedex.com/ai](https://www.fedex.com/ai)

Our Services at A Glance

Whether you are shipping documents to meet a deadline, saving money on a regular shipment or moving freight, FedEx offers a suite of transportation solutions to meet your business needs. Our extensive global network connects you quickly and reliably to over 220 countries and territories around the world. With door-to-door, customs cleared delivery typically in 24 to 48 hours, we are committed to supporting you with the right International Service – Guaranteed!*

FedEx Express® services provide fast, reliable, time-definite delivery for envelopes and packages weighing up to 150 lbs. to more than 220 countries and territories.

International Services		
FEDEX SERVICES		TRANSIT TIME
EXPRESS	FedEx International First®	<ul style="list-style-type: none">• 8 a.m. next business day to many locations in the U.S.• 10 a.m. next business day to select cities in Canada, Brazil, and Puerto Rico• 10 a.m. second business day in select cities in Europe• 10 a.m. third business day in select cities in Asia
	FedEx International Priority Express®	<ul style="list-style-type: none">• 12 p.m. next business day to many locations in the U.S.• 1 to 3 business days to rest of world
	FedEx International Priority®	<ul style="list-style-type: none">• Next business day by the end of day to many locations in the U.S.• 1 to 3 business days to 220 countries and territories
	FedEx® International Economy	<ul style="list-style-type: none">• 8 p.m. second business day to many locations in the U.S.• 4 to 6 business days to 220 countries and territories



* Check the terms of the Money-Back Guarantee at [fedex.com/ai](https://www.fedex.com/ai)

International Services & Rates



International Services

Documents & Packages Shipping Services

Choose from these fast, reliable, time-definite delivery services to meet your most critical deadlines. These options are available for documents and packages up to 68 kg (150 lbs.) All backed by our Money-Back Guarantee¹. Wherever you want to take your business, FedEx can help you get there.

FedEx International First®

Our fastest-possible delivery alternative for your shipments to select cities in the United States and Europe – with transit time of one to three business days, and deliveries as early as 8:00 a.m. and 9:00 a.m. respectively; and to Asia by 9:00 a.m. on the third business day.

FedEx International Priority Express®

Meet your deadlines with our new express service that offers midday time-definite delivery 1 to 3 business days to 27 key markets

- **Americas:** United States and Canada
- **Europe:** Austria, Belgium, Czech Republic, Denmark, Finland, France, Germany, Greece, Hungary, Ireland, Italy, Luxembourg, Netherlands, Poland, Portugal, Spain, Sweden, Switzerland and United Kingdom.
- **Asia:** Australia, China, Hong Kong, Japan, Singapore and Thailand.

**Service availability may vary according to place of collection and destination, according to postal codes, and throughout the year. For additional information, please contact Customer Service or your FedEx Representative.*

FedEx International Priority®

Express door-to-door, delivery alternative with the best coverage for your shipments to over 220 countries and territories around the world. Our customs-cleared, time-definite service is typically delivered in one to three business days by end of day, depending on its destination.

- **FedEx® 10kg and 25kg Box²:** no tape, no string, no scissors and no more searching for an empty box – a packaging solution that allows you to ship FedEx International Priority®, shipment at flat rate, up to 10 kg or 25 kg – value your money.

FedEx International Economy®

A cost effective alternative when shipping to international destinations for your less than urgent shipments with delivery in 4 to 6 business days.



¹ Check the terms of the Money-Back Guarantee at [fedex.com/ai](https://www.fedex.com/ai). ² If a FedEx® 10kg Box or a 25kg Box exceeds its weight limit, a special rate applies.

FedEx reserves the right to modify or change the services and applicable rates at any time. Certain restrictions apply. Shipments are subject to dimensional weight, fuel surcharge, taxes and duties (last two for International Shipping). Additional fees may apply. Not all services are offered in all countries. Please check the services and coverage; please contact our Customer Service Center for more information on delivery schedules to your postal code.

International Services: Countries & Territories

FedEx provides service to more than 220 countries and territories worldwide

Code	Countries & Territories	Zone	Code	Countries & Territories	Zone
AG	Antigua	C	MQ	Martinique	C
AR	Argentina	F	MX	Mexico	F
AW	Aruba	C	MS	Montserrat	C
BS	Bahamas	D	NL	Netherlands	E
BB	Barbados	D	PR	Puerto Rico	B
BM	Bermuda	D	BQ	St. Eustaquio & Saba	C
BQ	Bonaire	C	KN	St. Kitts & Nevis	C
BR	Brazil	F	LC	St. Lucia	D
VG	British Virgin Islands	C	SX	St. Maarten	C
CA	Canada	E	MF	St. Martin	C
KY	Cayman Islands	D	VC	St. Vincent & the Grenadines	D
CL	Chile	F	CH	Switzerland	E
CW	Curacao	C	TT	Trinidad & Tobago	D
DM	Dominica	C	TC	Turks & Caicos	D
DO	Dominican Republic	D	VI	U.S. Virgin Islands	C
FR	France	E	US	U.S.A. (except Miami)	A
GD	Grenada	D	US	U.S.A. (Miami)	B
GP	Guadeloupe	C	GB	United Kingdom	E
GY	Guyana	F	UY	Uruguay	F
HT	Haiti	D	VE	Venezuela	F
JM	Jamaica	D		Rest of the World	G

* Not all services are offered in all countries and territories. Please contact our Customer Service Center to check the list of countries and territories served.

International Services: *Export Rates*

FedEx International First®

Rates in USD	Weight (lbs.)	Zone A	Zone B	Zone E	Zone F	Zone G
FedEx® Envelope	1.0	98.40	82.10	117.30	132.70	139.20
FedEx® Pak	1.0	102.90	86.60	124.00	139.50	145.10
	2.0	106.70	89.40	128.80	139.60	147.90
	3.0	111.40	93.70	133.80	143.50	153.40
	4.0	116.10	98.00	138.80	147.40	158.90
	5.0	120.80	102.30	143.80	151.30	164.40
Other type of packaging shipments	1.0	111.30	94.40	134.60	143.60	152.70
	2.0	117.00	98.30	141.40	151.00	161.10
	3.0	122.70	102.20	148.20	158.40	169.50
	4.0	128.40	106.10	155.00	165.80	177.90
	5.0	134.10	110.00	161.80	173.20	186.30
	6.0	144.60	118.20	177.40	188.90	207.10
	7.0	155.10	126.40	193.00	204.60	227.90
	8.0	165.60	134.60	208.60	220.30	248.70
	9.0	176.10	142.80	224.20	236.00	269.50
	10.0	186.60	151.00	239.80	251.70	290.30
	11.0	193.70	157.00	250.40	262.80	303.80
	12.0	200.80	163.00	261.00	273.90	317.30
	13.0	207.90	169.00	271.60	285.00	330.80
	14.0	215.00	175.00	282.20	296.10	344.30
	15.0	222.10	181.00	292.80	307.20	357.80
	16.0	229.20	187.00	303.40	318.30	371.30
	17.0	236.30	193.00	314.00	329.40	384.80
	18.0	243.40	199.00	324.60	340.50	398.30
	19.0	250.50	205.00	335.20	351.60	411.80
	20.0	257.60	211.00	345.80	362.70	425.30
	21.0	265.90	217.20	356.60	374.00	437.50
	22.0	274.20	223.40	367.40	385.30	449.70
	23.0	282.50	229.60	378.20	396.60	461.90
	24.0	290.80	235.80	389.00	407.90	474.10
	25.0	299.10	242.00	399.80	419.20	486.30
	26.0	307.40	248.20	410.60	430.50	498.50
	27.0	315.70	254.40	421.40	441.80	510.70
	28.0	324.00	260.60	432.20	453.10	522.90
	29.0	332.30	266.80	443.00	464.40	535.10
	30.0	340.60	273.00	453.80	475.70	547.30
	31.0	348.90	279.20	464.60	487.00	559.50
	32.0	357.20	285.40	475.40	498.30	571.70
	33.0	365.50	291.60	486.20	509.60	583.90
	34.0	373.80	297.80	497.00	520.90	596.10
	35.0	382.10	304.00	507.80	532.20	608.30
	36.0	390.40	310.20	518.60	543.50	620.50
	37.0	398.70	316.40	529.40	554.80	632.70
	38.0	407.00	322.60	540.20	566.10	644.90
	39.0	415.30	328.80	551.00	577.40	657.10
	40.0	423.60	335.00	561.80	588.70	669.30
	41.0	431.90	341.20	572.60	600.00	681.50
	42.0	440.20	347.40	583.40	611.30	693.70
	43.0	448.50	353.60	594.20	622.60	705.90
	44.0	456.80	359.80	605.00	633.90	718.10
	45.0	465.10	366.00	615.80	645.20	730.30
	46.0	473.40	372.20	626.60	656.50	742.50
	47.0	481.70	378.40	637.40	667.80	754.70
	48.0	490.00	384.60	648.20	679.10	766.90
	49.0	498.30	390.80	659.00	690.40	779.10
	50.0	506.60	397.00	669.80	701.70	791.30

The FedEx International First® service arrives in the United States and selects cities in Europe, Asia and Latin America.

Europe: Austria, Belgium, Czech Republic, Denmark, Germany, Hungary, Ireland, Italy, France, Luxembourg, Netherlands, Poland, Spain, Sweden, Switzerland and United Kingdom.

Asia: Australia, China, Japan and Singapore.

Americas: the United States, Canada, Brazil, Colombia, Mexico and Puerto Rico.

* The rates in this document are effective from January 3rd, 2022, and substitute the rates published on January 4th, 2021. FedEx reserves the right to modify or change the services and rates at any time. Certain restrictions apply. Shipments are subject to oversize, a dimension, weight, additional handling or packaging to these packages. Additional fees may apply. Any fraction of a pound will be rounded up to the next higher rate. Not all services are offered in all countries. Rates do not include taxes and other surcharges. Please check our services and coverage by contacting our Customer Service Center.

International Services: *Export Rates*

FedEx International Priority Express®

Rates in USD	Weight (lbs.)	Zone A	Zone B	Zone C	Zone D	Zone E	Zone F	Zone G
FedEx® Envelope	1.0	74.90	58.20	61.60	61.60	78.80	94.60	101.20
FedEx® Pak	1.0	79.50	62.80	67.60	67.50	85.70	101.50	107.20
	2.0	83.30	65.70	71.30	71.00	90.60	101.60	110.10
	3.0	88.10	70.10	75.20	74.50	95.70	105.60	115.70
	4.0	92.90	74.50	79.10	78.00	100.80	109.60	121.30
	5.0	97.70	78.90	83.00	81.50	105.90	113.60	126.90
Other type of packaging shipments	1.0	88.00	70.80	74.20	74.10	96.50	105.70	115.00
	2.0	93.80	74.80	78.90	79.80	103.40	113.20	123.60
	3.0	99.60	78.80	83.60	85.50	110.30	120.70	132.20
	4.0	105.40	82.80	88.30	91.20	117.20	128.20	140.80
	5.0	111.20	86.80	93.00	96.90	124.10	135.70	149.40
	6.0	121.90	95.20	101.00	106.10	140.00	151.70	170.60
	7.0	132.60	103.60	109.00	115.30	155.90	167.70	191.80
	8.0	143.30	112.00	117.00	124.50	171.80	183.70	213.00
	9.0	154.00	120.40	125.00	133.70	187.70	199.70	234.20
	10.0	164.70	128.80	133.00	142.90	203.60	215.70	255.40
	11.0	171.90	134.90	139.10	149.60	214.40	227.00	269.20
	12.0	179.10	141.00	145.20	156.30	225.20	238.30	283.00
	13.0	186.30	147.10	151.30	163.00	236.00	249.60	296.80
	14.0	193.50	153.20	157.40	169.70	246.80	260.90	310.60
	15.0	200.70	159.30	163.50	176.40	257.60	272.20	324.40
	16.0	207.90	165.40	169.60	183.10	268.40	283.50	338.20
	17.0	215.10	171.50	175.70	189.80	279.20	294.80	352.00
	18.0	222.30	177.60	181.80	196.50	290.00	306.10	365.80
	19.0	229.50	183.70	187.90	203.20	300.80	317.40	379.60
	20.0	236.70	189.80	194.00	209.90	311.60	328.70	393.40
	21.0	245.20	196.10	199.80	216.70	322.60	340.20	405.80
	22.0	253.70	202.40	205.60	223.50	333.60	351.70	418.20
	23.0	262.20	208.70	211.40	230.30	344.60	363.20	430.60
	24.0	270.70	215.00	217.20	237.10	355.60	374.70	443.00
	25.0	279.20	221.30	223.00	243.90	366.60	386.20	455.40
	26.0	287.70	227.60	228.80	250.70	377.60	397.70	467.80
	27.0	296.20	233.90	234.60	257.50	388.60	409.20	480.20
	28.0	304.70	240.20	240.40	264.30	399.60	420.70	492.60
	29.0	313.20	246.50	246.20	271.10	410.60	432.20	505.00
	30.0	321.70	252.80	252.00	277.90	421.60	443.70	517.40
	31.0	330.20	259.10	257.80	284.70	432.60	455.20	529.80
	32.0	338.70	265.40	263.60	291.50	443.60	466.70	542.20
	33.0	347.20	271.70	269.40	298.30	454.60	478.20	554.60
	34.0	355.70	278.00	275.20	305.10	465.60	489.70	567.00
	35.0	364.20	284.30	281.00	311.90	476.60	501.20	579.40
	36.0	372.70	290.60	286.80	318.70	487.60	512.70	591.80
	37.0	381.20	296.90	292.60	325.50	498.60	524.20	604.20
	38.0	389.70	303.20	298.40	332.30	509.60	535.70	616.60
	39.0	398.20	309.50	304.20	339.10	520.60	547.20	629.00
	40.0	406.70	315.80	310.00	345.90	531.60	558.70	641.40

The FedEx International Priority Express® service arrives in the United States, Canada and select countries in Europe and Asia.

Continued →

* The rates in this document are effective from January 3rd, 2022, and substitute the rates published on January 4th, 2021.
FedEx reserves the right to modify or change the services and rates at any time. Certain restrictions apply. Shipments are subject to oversize, a dimension, weight, additional handling or packaging to these packages. Additional fees may apply. Any fraction of a pound will be rounded up to the next higher rate. Not all services are offered in all countries. Rates do not include taxes and other surcharges. Please check our services and coverage by contacting our Customer Service Center.

International Services: *Export Rates*

FedEx International Priority Express® (cont.)

Rates in USD	Weight (lbs.)	Zone A	Zone B	Zone C	Zone D	Zone E	Zone F	Zone G
Other type of packaging shipments	41.0	415.20	322.10	315.80	352.70	542.60	570.20	653.80
	42.0	423.70	328.40	321.60	359.50	553.60	581.70	666.20
	43.0	432.20	331.50	327.40	362.10	564.60	593.20	678.60
	44.0	433.50	331.50	333.20	362.10	575.60	604.70	691.00
	45.0	433.50	331.50	339.00	362.10	586.60	616.20	703.40
	46.0	433.50	331.50	344.80	362.10	597.60	627.30	715.80
	47.0	433.50	331.50	350.60	362.10	601.80	627.30	728.20
	48.0	433.50	331.50	356.40	362.10	601.80	627.30	734.40
	49.0	433.50	331.50	362.20	362.10	601.80	627.30	734.40
	50.0	433.50	331.50	367.20	362.10	601.80	627.30	734.40
Rates per Lb.	51 – 99	8.50	6.50	7.20	7.10	11.80	12.30	14.40
	100 – 154	7.50	6.20	5.70	6.70	11.70	12.00	14.20
	155 – 299	6.60	6.00	5.20	6.50	10.90	11.30	13.30
	300 – 499	6.10	5.70	4.60	6.10	10.30	10.70	12.20
	500+	5.80	5.60	4.60	6.00	9.90	10.40	11.80

The FedEx International Priority Express® service arrives in the United States, Canada and select countries in Europe and Asia.

Europe: Austria, Belgium, Czech Republic, Denmark, Finland, France, Germany, Greece, Hungary, Ireland, Italy, Luxembourg, Netherlands, Poland, Portugal, Spain, Sweden, Switzerland and United Kingdom.

Asia: Australia, China, Hong Kong, Japan, Singapore and Thailand.

Americas: the United States and Canada.

* Service availability may vary according to place of collection and destination, according to postal codes, and throughout the year. For additional information, please contact Customer Service or your FedEx Representative.



* The rates in this document are effective from January 3rd, 2022, and substitute the rates published on January 4th, 2021.

FedEx reserves the right to modify or change the services and rates at any time. Certain restrictions apply. Shipments are subject to oversize, a dimension, weight, additional handling or packaging to these packages. Additional fees may apply. Any fraction of a pound will be rounded up to the next higher rate. Not all services are offered in all countries. Rates do not include taxes and other surcharges. Please check our services and coverage by contacting our Customer Service Center.

International Services: *Export Rates*

FedEx International Priority®

Rates in USD	Weight (lbs.)	Zone A	Zone B	Zone C	Zone D	Zone E	Zone F	Zone G
FedEx® Envelope	1.0	73.40	57.10	60.40	60.40	77.30	92.70	99.20
FedEx® Pak	1.0	77.90	61.60	66.30	66.20	84.00	99.50	105.10
	2.0	81.70	64.40	69.90	69.60	88.80	99.60	107.90
	3.0	86.40	68.70	73.70	73.00	93.80	103.50	113.40
	4.0	91.10	73.00	77.50	76.40	98.80	107.40	118.90
	5.0	95.80	77.30	81.30	79.80	103.80	111.30	124.40
Other type of packaging shipments	1.0	86.30	69.40	72.70	72.60	94.60	103.60	112.70
	2.0	92.00	73.30	77.30	78.20	101.40	111.00	121.10
	3.0	97.70	77.20	81.90	83.80	108.20	118.40	129.50
	4.0	103.40	81.10	86.50	89.40	115.00	125.80	137.90
	5.0	109.10	85.00	91.10	95.00	121.80	133.20	146.30
	6.0	119.60	93.20	98.90	104.00	137.40	148.90	167.10
	7.0	130.10	101.40	106.70	113.00	153.00	164.60	187.90
	8.0	140.60	109.60	114.50	122.00	168.60	180.30	208.70
	9.0	151.10	117.80	122.30	131.00	184.20	196.00	229.50
	10.0	161.60	126.00	130.10	140.00	199.80	211.70	250.30
	11.0	168.70	132.00	136.10	146.60	210.40	222.80	263.80
	12.0	175.80	138.00	142.10	153.20	221.00	233.90	277.30
	13.0	182.90	144.00	148.10	159.80	231.60	245.00	290.80
	14.0	190.00	150.00	154.10	166.40	242.20	256.10	304.30
	15.0	197.10	156.00	160.10	173.00	252.80	267.20	317.80
	16.0	204.20	162.00	166.10	179.60	263.40	278.30	331.30
	17.0	211.30	168.00	172.10	186.20	274.00	289.40	344.80
	18.0	218.40	174.00	178.10	192.80	284.60	300.50	358.30
	19.0	225.50	180.00	184.10	199.40	295.20	311.60	371.80
	20.0	232.60	186.00	190.10	206.00	305.80	322.70	385.30
	21.0	240.90	192.20	195.80	212.70	316.60	334.00	397.50
	22.0	249.20	198.40	201.50	219.40	327.40	345.30	409.70
	23.0	257.50	204.60	207.20	226.10	338.20	356.60	421.90
	24.0	265.80	210.80	212.90	232.80	349.00	367.90	434.10
	25.0	274.10	217.00	218.60	239.50	359.80	379.20	446.30
	26.0	282.40	223.20	224.30	246.20	370.60	390.50	458.50
	27.0	290.70	229.40	230.00	252.90	381.40	401.80	470.70
	28.0	299.00	235.60	235.70	259.60	392.20	413.10	482.90
	29.0	307.30	241.80	241.40	266.30	403.00	424.40	495.10
	30.0	315.60	248.00	247.10	273.00	413.80	435.70	507.30
	31.0	323.90	254.20	252.80	279.70	424.60	447.00	519.50
	32.0	332.20	260.40	258.50	286.40	435.40	458.30	531.70
	33.0	340.50	266.60	264.20	293.10	446.20	469.60	543.90
	34.0	348.80	272.80	269.90	299.80	457.00	480.90	556.10
	35.0	357.10	279.00	275.60	306.50	467.80	492.20	568.30
	36.0	365.40	285.20	281.30	313.20	478.60	503.50	580.50
	37.0	373.70	291.40	287.00	319.90	489.40	514.80	592.70
	38.0	382.00	297.60	292.70	326.60	500.20	526.10	604.90
	39.0	390.30	303.80	298.40	333.30	511.00	537.40	617.10
	40.0	398.60	310.00	304.10	340.00	521.80	548.70	629.30

Continued →

* The rates in this document are effective from January 3rd, 2022, and substitute the rates published on January 4th, 2021.
FedEx reserves the right to modify or change the services and rates at any time. Certain restrictions apply. Shipments are subject to oversize, a dimension, weight, additional handling or packaging to these packages. Additional fees may apply. Any fraction of a pound will be rounded up to the next higher rate. Not all services are offered in all countries. Rates do not include taxes and other surcharges. Please check our services and coverage by contacting our Customer Service Center.

International Services: *Export Rates*

FedEx International Priority® (cont.)

Rates in USD	Weight (lbs.)	Zone A	Zone B	Zone C	Zone D	Zone E	Zone F	Zone G
Other type of packaging shipments	41.0	406.90	316.20	309.80	346.70	532.60	560.00	641.50
	42.0	415.20	322.40	315.50	353.40	543.40	571.30	653.70
	43.0	423.30	326.40	321.20	357.00	554.20	582.60	665.90
	44.0	423.30	326.40	326.90	357.00	565.00	593.90	678.10
	45.0	423.30	326.40	332.60	357.00	575.80	605.20	690.30
	46.0	423.30	326.40	338.30	357.00	586.60	616.50	702.50
	47.0	423.30	326.40	344.00	357.00	591.60	617.10	714.70
	48.0	423.30	326.40	349.70	357.00	591.60	617.10	719.10
	49.0	423.30	326.40	355.40	357.00	591.60	617.10	719.10
	50.0	423.30	326.40	361.10	357.00	591.60	617.10	719.10
Rates per Lb.	51 – 99	8.30	6.40	7.10	7.00	11.60	12.10	14.10
	100 – 154	7.40	6.10	5.60	6.60	11.50	11.80	13.90
	155 – 299	6.50	5.90	5.10	6.40	10.70	11.10	13.00
	300 – 499	6.00	5.60	4.50	6.00	10.10	10.50	12.00
	500+	5.70	5.50	4.50	5.90	9.70	10.20	11.60

FedEx International Priority®: FedEx® 10kg and 25kg Box

Rates in USD	Weight (lbs.)	Zone A	Zone B	Zone C	Zone D	Zone E	Zone F	Zone G
FedEx® 10 kg Box	22 lbs.	197.10	156.00	160.10	173.00	252.80	267.20	317.80
	Add. lbs.	9.00	7.10	7.30	7.90	11.50	12.10	14.40
FedEx® 25 kg Box	55 lbs.	340.50	266.60	264.20	293.10	446.20	469.60	543.90
	Add. lbs.	6.20	4.80	4.80	5.30	8.10	8.50	9.90

The rate for FedEx® 10 kg Box and FedEx® 25 kg Box only apply when using the designated packaging for this service and can only be shipped via FedEx International Priority® service with special fixed rate. Shipments weighing more than specified will be charged according to the rate per additional kg mentioned in the Service Guide. Rates are subject to change without notice.

* The rates in this document are effective from January 3rd, 2022, and substitute the rates published on January 4th, 2021.

FedEx reserves the right to modify or change the services and rates at any time. Certain restrictions apply. Shipments are subject to oversize, a dimension, weight, additional handling or packaging to these packages. Additional fees may apply. Any fraction of a pound will be rounded up to the next higher rate. Not all services are offered in all countries. Rates do not include taxes and other surcharges. Please check our services and coverage by contacting our Customer Service Center.

International Services: *Export Rates*

FedEx International Economy®

Rates in USD	Weight (lbs.)	Zone A	Zone B	Zone C	Zone D	Zone E	Zone F	Zone G
Other type of packaging shipments	1.0	74.40	59.10	60.90	61.30	79.00	88.10	97.10
	2.0	78.80	62.10	65.00	66.00	85.80	94.40	104.30
	3.0	83.20	65.10	69.10	70.70	92.60	100.70	111.50
	4.0	87.60	68.10	73.20	75.40	99.40	107.00	118.70
	5.0	92.00	71.10	77.30	80.10	106.20	113.30	125.90
	6.0	100.60	77.40	83.60	87.40	118.10	127.00	142.40
	7.0	109.20	83.70	89.90	94.70	130.00	140.70	158.90
	8.0	117.80	90.00	96.20	102.00	141.90	154.40	175.40
	9.0	126.40	96.30	102.50	109.30	153.80	168.10	191.90
	10.0	135.00	102.60	108.80	116.60	165.70	181.80	208.40
	11.0	140.90	107.50	113.50	121.80	174.40	190.60	219.80
	12.0	146.80	112.40	118.20	127.00	183.10	199.40	231.20
	13.0	152.70	117.30	122.90	132.20	191.80	208.20	242.60
	14.0	158.60	122.20	127.60	137.40	200.50	217.00	254.00
	15.0	164.50	127.10	132.30	142.60	209.20	225.80	265.40
	16.0	170.40	132.00	137.00	147.80	217.90	234.60	276.80
	17.0	176.30	136.90	141.70	153.00	226.60	243.40	288.20
	18.0	182.20	141.80	146.40	158.20	235.30	252.20	299.60
	19.0	188.10	146.70	151.10	163.40	244.00	261.00	311.00
	20.0	194.00	151.60	155.80	168.60	252.70	269.80	322.40
	21.0	200.90	156.80	160.90	174.10	263.00	279.80	333.60
	22.0	207.80	162.00	166.00	179.60	273.30	289.80	344.80
	23.0	214.70	167.20	171.10	185.10	283.60	299.80	356.00
	24.0	221.60	172.40	176.20	190.60	293.90	309.80	367.20
	25.0	228.50	177.60	181.30	196.10	304.20	319.80	378.40
	26.0	235.40	182.80	186.40	201.60	314.50	329.80	389.60
	27.0	242.30	188.00	191.50	207.10	324.80	339.80	400.80
	28.0	249.20	193.20	196.60	212.60	335.10	349.80	412.00
	29.0	256.10	198.40	201.70	218.10	345.40	359.80	423.20
	30.0	263.00	203.60	206.80	223.60	355.70	369.80	434.40
	31.0	269.90	208.80	211.90	229.10	366.00	379.80	445.60
	32.0	276.80	214.00	217.00	234.60	376.30	389.80	456.80
	33.0	283.70	219.20	222.10	240.10	386.60	399.80	468.00
	34.0	290.60	224.40	227.20	245.60	396.90	409.80	479.20
	35.0	297.50	229.60	232.30	251.10	407.20	419.80	490.40
	36.0	304.40	234.80	237.40	256.60	417.50	429.80	501.60
	37.0	311.30	240.00	242.50	262.10	427.80	439.80	512.80
	38.0	318.20	245.20	247.60	267.60	438.10	449.80	524.00
	39.0	325.10	250.40	252.70	273.10	448.40	459.80	535.20
	40.0	332.00	255.60	257.80	278.60	458.70	469.80	546.40
	41.0	338.90	260.80	262.90	284.10	469.00	479.80	557.60
	42.0	345.80	266.00	268.00	289.60	479.30	489.80	568.80
	43.0	351.90	271.20	273.10	295.10	489.60	499.80	580.00
	44.0	351.90	276.40	278.20	300.60	499.90	509.80	591.20
	45.0	351.90	281.60	283.30	300.90	510.20	519.80	602.40

Continued →

* The rates in this document are effective from January 3rd, 2022, and substitute the rates published on January 4th, 2021.

FedEx reserves the right to modify or change the services and rates at any time. Certain restrictions apply. Shipments are subject to oversize, a dimension, weight, additional handling or packaging to these packages. Additional fees may apply. Any fraction of a pound will be rounded up to the next higher rate. Not all services are offered in all countries. Rates do not include taxes and other surcharges. Please check our services and coverage by contacting our Customer Service Center.

International Services: *Export Rates*

FedEx International Economy® (cont.)

Rates in USD	Weight (lbs.)	Zone A	Zone B	Zone C	Zone D	Zone E	Zone F	Zone G
Other type of packaging shipments	46.0	351.90	286.80	288.40	300.90	520.50	529.80	613.60
	47.0	351.90	290.70	293.50	300.90	525.30	539.80	624.80
	48.0	351.90	290.70	298.60	300.90	525.30	549.80	636.00
	49.0	351.90	290.70	303.70	300.90	525.30	555.90	637.50
	50.0	351.90	290.70	308.80	300.90	525.30	555.90	637.50
Rates per Lb.	51 – 99	6.90	5.70	6.10	5.90	10.30	10.90	12.50
	100 – 154	6.20	5.20	4.80	5.80	10.30	10.40	12.40
	155 – 299	5.80	5.10	4.30	5.70	9.40	9.70	11.20
	300 – 499	5.30	4.80	3.80	5.50	8.90	8.90	10.60
	500+	5.10	4.70	3.80	5.40	8.60	8.60	10.40



* The rates in this document are effective from January 3rd, 2022, and substitute the rates published on January 4th, 2021.
FedEx reserves the right to modify or change the services and rates at any time. Certain restrictions apply. Shipments are subject to oversize, a dimension, weight, additional handling or packaging to these packages. Additional fees may apply. Any fraction of a pound will be rounded up to the next higher rate. Not all services are offered in all countries. Rates do not include taxes and other surcharges. Please check our services and coverage by contacting our Customer Service Center.

International Services: Additional Services

Additional Services and Fees that may apply to your international shipments

FedEx has additional services to ensure that your packages arrive safely and on time. See below additional services that may apply to your shipment.

The following fees apply according to the airway bill. All rates are U.S. dollars (USD)

Additional Services	Rates in USD
<p>Declared Value</p> <p>The maximum Declared Value for Carriage varies by country and type of service but shall not exceed \$50,000 per shipment (or \$100,000 for FedEx International Priority Freight shipments). For item of extraordinary value, there is a limit of \$500 or less, depending upon destination country. The Declared Value for Carriage may not exceed the Declared Value of Customs.</p> <p><i>* For the contents of a FedEx Envelope or a FedEx Pak, regardless of destination, the maximum declared value for customs is \$500, and the maximum declared value for carriage is \$100 or \$9.07 per pound, whichever is greater. Goods with a customs value (actual or declared) exceeding \$500 should not be shipped in a FedEx Envelope or FedEx Pak.</i></p>	<p>\$1.11 per \$100.00 in declared value, with the first \$100 or \$9.07 per lb. free (whichever is greater)</p>
<p>Address Correction</p> <p>If the shipper provides an incomplete or incorrect recipient address, we may attempt to find the correct address and complete delivery. We may use the address included in the shipper’s electronic shipment information to determine whether an address correction is necessary. We will assess a shipping fee.</p> <ul style="list-style-type: none">• When a label needs a correction, and a correction is done by a member of FedEx.• Fee is based on correcting any address-related field of either the pickup or delivery address.	<p>\$16.00 per shipment</p>
<p>Saturday Service</p> <p>FedEx offers Saturday delivery and pickup services in select international locations. For Saturday delivery, simply indicate Saturday service on your FedEx International Air Waybill, and your package will be delivered to the recipient on Saturday (wherever Saturday Service is available). Available for FedEx International Priority®, FedEx International Economy®, FedEx International Priority® Freight and FedEx International Economy® Freight.</p>	<p>\$50.00 per shipment</p>
<p>International Out-of-Delivery-Area/International Out-of-Pickup-Area ¹</p> <p>International shipments delivered to or pick-up from remote and less-accessible locations are assessed an International Out-of-Delivery-Area Surcharge or an International Out-of-Pickup-Area Surcharge.</p> <p><i>* Effective January 17, 2022, the International Out-of-Delivery-Area Surcharge and International-Out-of-Pickup-Area Surcharge will be determined based on the corresponding tier of the ZIP code, postal code, or city of the shipment’s origin and/or destination location for International Express Freight and Parcel services.</i></p> <p>View the list of ZIP codes, postal codes, or cities by destination country where this surcharge applies.</p>	<p>Greater of \$32.00 per shipment or \$0.30 per lb. (whichever is greater)</p> <p>-----</p> <p><i>Effective Jan 17, 2022, applicable surcharges by tier:</i></p> <p>Tier A: \$3.55 per shipment</p> <p>Tier B: Greater of \$32.00 per shipment or \$0.30 per lb. (whichever is greater)</p> <p>Tier C: Greater of \$42.00 per shipment or \$0.39 per lb. (whichever is greater)</p>
<p>Dangerous Goods – Accessible</p> <p>Certain dangerous goods must be accessible during transit. You can ship these accessible dangerous goods using most of our FedEx Express services: <i>explosives; flammable gas; non-flammable gas with a “cargo aircraft only” label; flammable liquid; flammable solid, spontaneously combustible, dangerous when wet; oxidizer and organic peroxide; and corrosive material.</i></p>	<p>\$117.00 per shipment or \$0.60 per lb. (whichever is greater)</p>

Continued ▶

The rates in this document are effective from January 3rd, 2022, and substitute the rates published on January 4th, 2021. FedEx reserves the right to modify or change the services and rates at any time. Certain restrictions apply. Shipments are subject to a dimensional weight and fuel surcharge. Additional fees may apply. Not all services are offered in all cities. Please check our services and coverage by contacting our Customer Service Center.

¹ Additional fees for extended area for delivery and pick-up services depend on postal codes of destination and origin, respectively.

International Services: *Additional Services*

Additional Services and Fees that may apply to your international shipments

FedEx has additional services to ensure that your packages arrive safely and on time. See below additional services that may apply to your shipment.

The following fees apply according to the airway bill. All rates are U.S. dollars (USD)

Additional Services	Rates in USD
Dangerous Goods – Inaccessible You can ship the following dangerous good classifications via most of our FedEx Express services: <i>non-flammable gas without a “cargo aircraft only” label; toxic, infectious substances; radioactive materials; and other miscellaneous dangerous goods.</i>	\$96.00 per shipment or \$0.60 per lb. (whichever is greater)
FedEx International Broker Select® (Selection of Customs Agent) FedEx International Broker Select shipments may be routed to the FedEx in-bond location that serves your customs broker. When this occurs and you choose to have us deliver the shipment to a recipient who is served by a different FedEx location than your customs broker (such as in a different metropolitan area), a fee may apply.	\$10.00 per shipment or \$0.51 per lb. (whichever is greater)
Non-Account Billing A fee applies if the shipper does not provide a valid or accurate FedEx account number for billing option selected.	\$16.00 per shipment
Third-Party Billing A surcharge will apply to shipments that billed to a third party. The surcharge applies when an account unrelated to the shipper, as solely determined by FedEx, is billed as a third party for the shipment. It will be charged to the third-party payer.	2.5% of Total Shipment Charges
Direct Signature FedEx will obtain a signature from someone at the delivery address. If no one is at the delivery address, FedEx may reattempt delivery.	\$3.00 per package
Indirect Signature FedEx may release the package in one of the following three ways: <ul style="list-style-type: none">Obtain a signature from someone at the delivery address.Acquire a signature from a someone at a neighboring address.Gain authorization from the recipient to release the package without anyone present (where available)	\$2.00 per package
Adult Signature FedEx will obtain a signature from someone at the delivery address who is at least the age of majority. If an eligible recipient is not available at the address, FedEx may reattempt delivery. Government-issued photo identification is required.	\$3.50 per package
FedEx Priority Alert™ FedEx Priority Alert (FPA) is a specialized and fee-based specially for shipments requiring a high degree of shipment visibility and delivery compliance. By combining special boarding, enhanced shipment status tracking and operational recovery procedures, FPA provides a totally reliable solution for your shipment.	Parcel: \$25.50 per shipment or \$0.50 per lb. (whichever is greater) Freight: \$200.00 per shipment/pallet or \$0.20 per lb. (whichever is greater)

[Continued →](#)

The rates in this document are effective from January 3rd, 2022, and substitute the rates published on January 4th, 2021. FedEx reserves the right to modify or change the services and rates at any time. Certain restrictions apply. Shipments are subject to a dimensional weight and fuel surcharge. Additional fees may apply. Not all services are offered in all cities. Please check our services and coverage by contacting our Customer Service Center.

¹ Additional fees for extended area for delivery and pick-up services depend on postal codes of destination and origin, respectively.

International Services: *Additional Services*

Additional Services and Fees that may apply to your international shipments

FedEx has additional services to ensure that your packages arrive safely and on time. See below additional services that may apply to your shipment.

The following fees apply according to the airway bill. All rates are U.S. dollars (USD)

Additional Services	Rates in USD
FedEx Priority Alert Plus TM FedEx Priority Alert Plus (FPA+) service includes all features of FPA as well as pro-active intervention capabilities for temperature sensitive shipments. With FPA+ re-icing, gel pack replenishment and cold storage are included as standard in the service.	Parcel: \$30.60 per shipment or \$0.60 per lb. (whichever is greater) Freight: \$255.00 per shipment or \$0.25 per lb. (whichever is greater)
FedEx On-Demand Care A charge applies if, at your request, FedEx takes remedial action to protect the integrity of a shipment's contents in transit. Remedial actions available include dry ice replenishment and gel pack reconditioning. To eligible for FedEx On-Demand Care, you must be a FedEx account holder, and first sign and return a one-time FedEx On-Demand Temperature Control Intervention Authorization form.	Parcel: \$125.00 per shipment or \$2.50 per lb. (whichever is greater) Freight: \$500.00 per shipment or \$0.50 per lb. (whichever is greater)
Fuel Surcharge We reserve the right to assess fuel and other surcharges on shipments, without notice. For FedEx Express, the fuel surcharge percentage will be subject to adjustment using the U.S. Gulf Coast (USGC) spot price for a gallon of kerosene-type jet fuel, as published by the U.S. Department of Energy.	<i>Please check our Fuel Surcharge for weekly updated changes.</i>
Flowers A service charge will be applied for plants, plant materials or cut flowers. Packages containing these items may be inspected by government agencies, which may result in a delay in delivery or seizure by government inspectors.	\$20.00 per shipment
Dry Ice A service charge will be applied for handling and transporting dry ice. Shipments containing dry ice must be marked, and customers must notify FedEx at pickup. The fee will not apply to shipments containing both dry ice and dangerous goods (accessible or inaccessible) – in these instances, only dangerous goods charges will be assessed.	\$5.00 per shipment

The rates in this document are effective from January 3rd, 2022, and substitute the rates published on January 4th, 2021. FedEx reserves the right to modify or change the services and rates at any time. Certain restrictions apply. Shipments are subject to a dimensional weight and fuel surcharge. Additional fees may apply. Not all services are offered in all cities. Please check our services and coverage by contacting our Customer Service Center.

¹ Additional fees for extended area for delivery and pick-up services depend on postal codes of destination and origin, respectively.

International Services: *Additional Services*

Additional Services and Fees that may apply to your international shipments

If your shipments meet more than one additional handling surcharge criteria, dimension, weight¹ or packaging, only the surcharge with highest net rate will apply.

The following fees apply according to the air waybill and in U.S. dollars (USD).

Additional Handling Services	Rates in USD
International Services² - Shipments up to 150 lbs. A surcharge applies to any package (import and export) that:	
Dimension <ul style="list-style-type: none">measures greater than 121 cm (48 inches) along its longest sides;measures greater than 76 cm (30 inches) along its second-longest side;measures greater than 226 cm (105 inches) in length and girth. <i>Length & Girth = Length + 2 (Width) + 2 (Height)</i>	\$66.00 per shipment
Weight¹ <ul style="list-style-type: none">has an actual weight greater than 70 lbs.or the average weight of all packages is greater than 70 lbs.	\$13.00 per shipment
Packaging: is in non-standard packaging, including any package that: <ul style="list-style-type: none">is not fully encased in an outer shipping container;is encased in an outer shipping container not made of corrugated fiberboard (cardboard) materials, including but not limited to metal, wood, canvas, leather, hard plastic, soft plastic (e.g., plastic bags) or expanded polystyrene foam (e.g., Styrofoam);is encased in an outer shipping container covered in shrink wrap or stretch wrap;is encased in a soft-sided pack (e.g., courier packs, poly bags and bubble mailers) that exceeds 18 inches along its longest side or 13 inches along its second-longest side or 5 inches in height;is cylindrical, including (without limitation) mailing tubes, cans buckets, barrels, drums or pails;is bound with metal, plastic or cloth banding, or has wheels, casters, handles, or straps (including packages where the outer surface area is loosely wrapped, or where the contents protrude outside the surface area),could become entangled in or cause damage to other packages or the FedEx sortation system. Note: package shape and dimensions may change during transit, which can affect the package's dimensional weight and surcharge eligibility. If the dimensions change during transit, FedEx Express may make appropriate adjustments to the shipment charges at any time. This surcharge applies per shipment even if multiple pieces are bundled in a shipment. FedEx Express reserves the right to assess additional handling charges for packages that require special handling or that require additional packaging during transit.	\$13.00 per shipment
Oversize: An oversize charge applies to packages that exceed 96 inches in length or 130 inches in length and girth: <i>Length & Girth = Length + 2 (Width) + 2 (Height)</i> Note: package shape and dimensions may change during transit, which can affect the package's dimensional weight and surcharge eligibility. If the dimensions change during transit, FedEx Express may make appropriate adjustments to the shipment charges at any time.	\$87.00 per shipment

Continued →

The rates in this document are effective from January 3rd, 2022, and substitute the rates published on January 4th, 2021. FedEx reserves the right to modify or change the services and rates at any time. Certain restrictions apply. Shipments are subject to a dimensional weight and fuel surcharge. Additional fees may apply. Not all services are offered in all cities. Please check our services and coverage by contacting our Customer Service Center.

¹ Except: FedEx International Priority® Freight and FedEx International Economy® Freight. A shipment that meets oversize and additional handling criteria (weight or packaging only) will be subject to both charges.

² International Services: FedEx International First®, FedEx International Priority Express®, FedEx International Priority®, FedEx International Economy®

International Services: *Additional Services*

Additional Services and Fees that may apply to your international shipments

If your shipments meet more than one additional handling surcharge criteria, dimension, weight¹ or packaging, only the surcharge with highest net rate will apply.

The following fees apply according to the air waybill and in U.S. dollars (USD).

Additional Handling Services	Rates in USD
Freight Services - Shipments more than 68 kg (150 lbs.) Dimension: <ul style="list-style-type: none">• Surcharge applies to any freight handling unit that measures greater than 157 cm (62 inches) along its longest side.• This surcharge applies on per-freight-handling-unit basis even if multiple pieces of freight are bundled in a shipment. We reserve the right to assess additional handling charges freight and any freight handling unit that require special handling during transit.	\$87.00 per shipment or pallet

International Services: *Clearance Services*

Customs Charges	Rates in USD
Advancement Fee (or Disbursement Fee) In the event we disburse duties and taxes on any given shipment to a customs agency, the payer will be assessed an ancillary clearance service fee based on a flat rate or on a percentage of the total amount disbursed.	2% of Duty & Tax paid with minimum charge of \$5.00

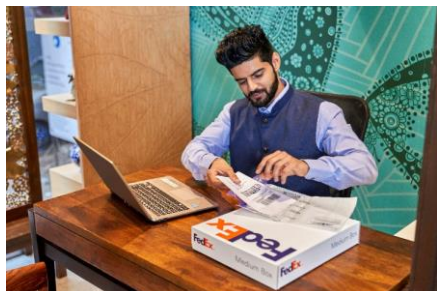
The rates in this document are effective from January 3rd, 2022, and substitute the rates published on January 4th, 2021. FedEx reserves the right to modify or change the services and rates at any time. Certain restrictions apply. Shipments are subject to a dimensional weight and fuel surcharge. Additional fees may apply. Not all services are offered in all cities. Please check our services and coverage by contacting our Customer Service Center.

¹ Except: FedEx International Priority® Freight and FedEx International Economy® Freight. A shipment that meets oversize and additional handling criteria (weight or packaging only) will be subject to both charges.

² International Services: FedEx International First®, FedEx International Priority Express®, FedEx International Priority®, FedEx International Economy®

International Services: *Customs Clearance Tools*

Every time you ship internationally, you will need to take a few additional steps to prepare for your shipment for the customs clearance process. FedEx® offers a variety of online resources and tools to help you along every step of the process.



FedEx® Global Trade Manager

Preparing customs clearance documentation made easy

FedEx Global Trade Manager and Document Preparation Center provide you with a one-stop resource for international shipping information and customs clearance documentation requirements.



FedEx® Electronic Trade Documents

Enjoy a smooth customs clearance process

FedEx Electronic Trade Documents (ETD) is a simple free of charge solution that allows you to transmit customs documentation electronically for your international shipments.



Ancillary Clearance Service Fees

FedEx provides import clearance processing for international express package and international express freight shipments. FedEx may charge an ancillary clearance service fee, where applicable, on international shipments for clearance processing; for services requested by the shipper, recipient or importer of record; or to recover the costs passed to FedEx by the regulatory agency for regulatory filing.

Shipping with FedEx Express®



FedEx ShipCenter® Network

Send or receive your shipment at FedEx Ship Centers.

With numerous FedEx Ship Centers and FedEx Authorized Ship Centers (FASCs) locations throughout Anguilla near to you, FedEx Express offers a variety of solutions with the quality services that meet your needs.



FedEx ShipCenter®

- Ship international shipments with the reliability you expect from the FedEx retail network.
- Enjoy the convenience of a near Ship Center to your location and accessible schedules from Monday to Saturday for ship and pick up your shipments.
- Hold your FedEx Express® package for pickup.
- Ship paying in Cash, Credit Card, Debit Card or drop off your shipments using your FedEx account.
- Drop off your shipments using FedEx Prepaid or Pre-labeled shipments through your FedEx account.
- Packaging solutions for all needs for ensure the security of your shipment.



FedEx Authorized ShipCenter®

- Ship international shipments with the confidence of authorized professionals are handling your shipments.
- Ship paying in Cash, drop off your shipments using your FedEx account or with pre-printed labels.
- Utilize each store's regular scheduled pickup times for FedEx Express®.

Packaging Solutions

FedEx Express® offers a variety of packaging options, from free of cost FedEx Express® white packaging to brown packaging that is available for purchase.

FedEx Express® Packaging is available at no extra cost for use with FedEx Express® international parcel shipments.



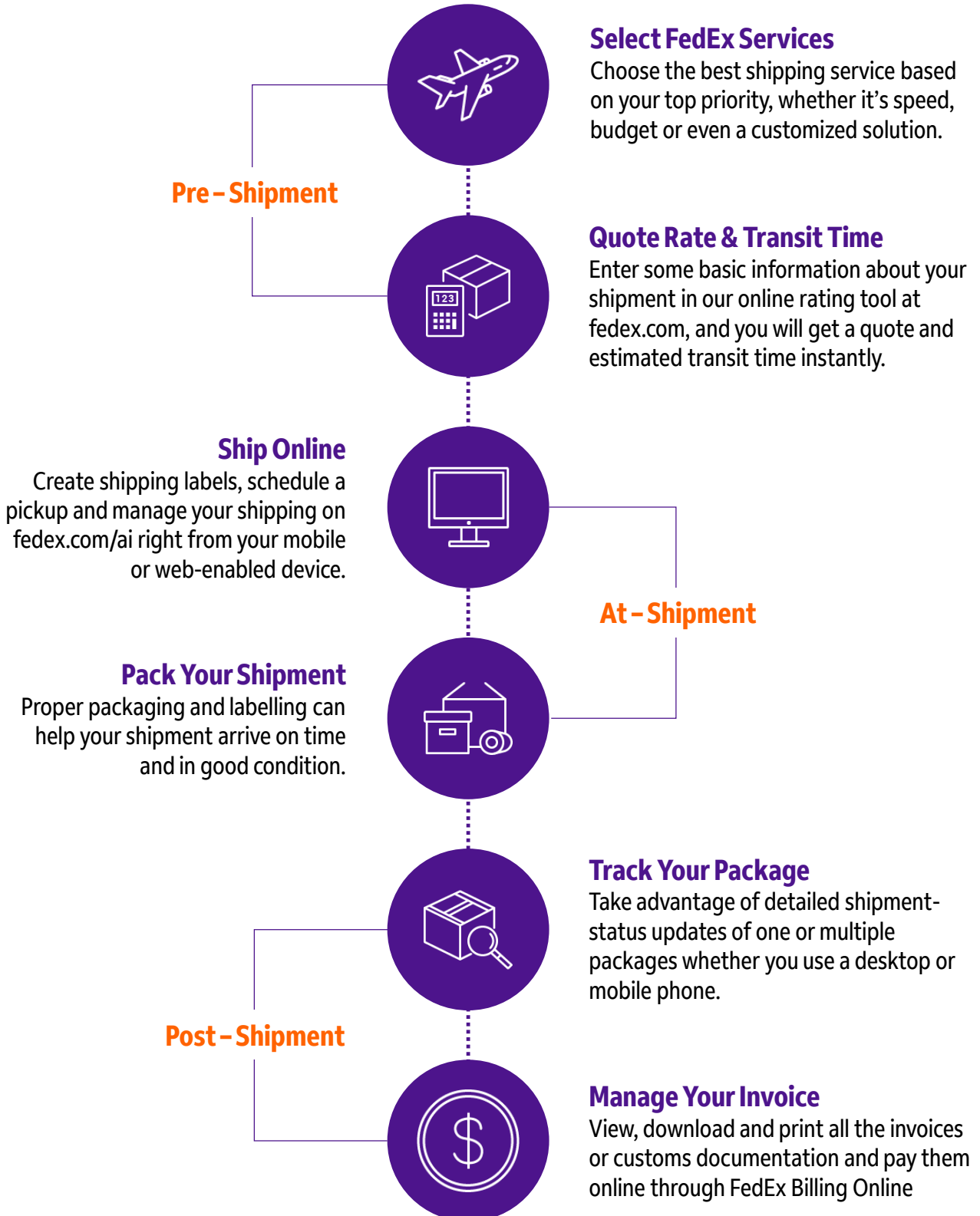
FedEx® Standard Packaging is available for purchase in various sizes and shapes, including specialty boxes. Customers are welcome to use this packaging for shipping with all FedEx services. Please visit our Ship Centers to get more information, including packaging types and rates.



Shipping with FedEx: Online Shipping Tools

Our suite of online solutions at fedex.com/ai make your shipping experience easy from start to finish.

No matter what your shipping needs, you can do more at fedex.com/ai. Use our time-saving online shipping tools and resources you need to work faster and be more productive.



Shipping with FedEx: Calculate the Rate

1

Find the zone for your destination

- Use the shipping zone number assigned in the table to identify your service rate
- Zone table for [International](#) services for Export

2

Determine the chargeable weight

- Determine the weight of the package (for FedEx Express International shipments, determine the weight of the total shipment). Round up to the next-higher number
- For Dimensional Weight, see [here](#) for instruction to calculate the rate
- Your chargeable weight is the greater of the actual weight or the dimensional weight

3

Find your rate

- Turn to the appropriate rate table for **FedEx Express International Export** shipments
- Choose a FedEx service. See [here](#) for International services
- Find your chargeable weight from step 2 to determine your rate

4

Determine fees

- Services, additional fees, discounts and other non-transportation charges that may apply to any of your shipments.
- See [here](#) for International Surcharges and Ancillaries

Shipping with FedEx: Calculate Dimension Weight (DIM)

Dimension Weight Rate Calculate for Your Shipments

The rate calculation according to the dimensional weight applies to each shipment packed by the customer. The FedEx packaging may also be subject to price calculation depending on dimensional weight. If the dimensional weight exceeds the actual weight, may be calculated based on dimensional weight.

Calculate Dimensional Weight

- Measure the length*, the width and the height of your package in centimeters.
- Find the volume and divide by 139 to get the dimensional weight in kilograms. Round fractions to the next full digit.
- If the dimensional weight exceeds the actual weight of the package, dimensional weight is used to calculate your rate.

**The length is defined as the longest side of the object or package. The circumference is calculated by taking twice the width plus twice the height of the object or package.*

$$\text{Dimensional weight factor} = \frac{\text{Length} \times \text{Width} \times \text{Height}}{139} = \text{Pounds}$$



Contact Us

Our professional Customer Support team is here for you



Ask FedEx

FedEx Virtual Assistant is here to help you with your questions regarding FedEx services.



Call FedEx: 264.497.2719 Professional Courier Services



Write to FedEx

Our representatives are available online Monday through Friday, 6:30 a.m. to 6:00 p.m., excluding holidays.



FedEx Express® Terms and Conditions:

You can view the most current version of shipping terms and conditions for FedEx shipping services, including International export services at [fedex.com/ai](https://www.fedex.com/ai)

International Shipments