



Whether your shipments are heavy or lightweight, urgent or less time sensitive, FedEx has the solution for you. Benefit from competitive prices for a highly reliable service and get your shipments to their destination on time.

How to calculate the charges that apply to your shipment

- Find the zone that your destination/origin falls within in the relevant Zone Tables.
- Choose which service you wish to use.
- Determine the total weight of your shipment to find the transportation rate in the appropriate column.
- Determine whether any fuel surcharge or other surcharges apply to your shipment.

Rate Information

The transportation rates are effective from 5 January 2026. The transportation rates and services offered by FedEx may be amended, modified or discontinued by FedEx at any time with or without notice. They may also vary depending upon the point of or time of collection or delivery, shipment size or weight or commodity type.

FedEx Terms and Conditions

All shipments are subject to the FedEx Terms and Conditions of Carriage (“Conditions of Carriage”) published and maintained at the applicable [fedex.com](https://www.fedex.com) site. For shipments originating in Hungary, you can find the relevant Conditions of Carriage here: [fedex.com/hu_english/services/terms](https://www.fedex.com/hu_english/services/terms). The information on your rates and shipments set out in this document is in part extracted from the Conditions of Carriage and provided for reference purposes only. In the event of any conflict, the online Conditions of Carriage prevail.

Duties, Taxes and Additional Charges

Duties and taxes may apply to certain shipments. Such duties and taxes will be billed to the recipient where allowed, unless otherwise requested by the sender. In the event FedEx disburses duties, taxes or other fees to a customs agency to complete clearance of certain items through customs, the payer will be assessed a clearance service fee, which may vary depending on the destination country. For more information, see [fedex.com/hu_english/ancillaryservices](https://www.fedex.com/hu_english/ancillaryservices).

Additional charges may apply to certain shipments including fuel and other surcharges, ancillary charges, Declared Value for Carriage charges, return charges, special handling fees, import and export charges, and other costs reasonably incurred by FedEx relating to the transport of a shipment. For more information see [fedex.com/hu_english/ratesinformation](https://www.fedex.com/hu_english/ratesinformation). All rates, surcharges and other applicable charges quoted exclude any value added tax (VAT) that may be applicable and which would be added to the charges at the rate in force at the time.

Exchange Fee

An additional exchange fee may apply for the conversion of rates in currencies other than the currency in which the payer’s account is billed.



Weight and Dimensions

Dimensional weight is the amount of space a package occupies in relation to its actual weight. For each shipment, FedEx charges based on the dimensional weight or the actual weight, whichever is greater. FedEx uses the following volumetric calculation to determine the dimensional weight in kg per package: length x height x width in cm/5 000.⁽¹⁾ Dimensional weight does not apply to shipments in FedEx packaging, however, in case FedEx® Pak in Europe exceeds 0.0154m³, dimensional weight may apply. FedEx® Box packaging is subject to a minimum weight charge.

When measuring shipments, any fraction of a centimetre or kilogram will be rounded up to the next whole unit.

The maximum dimensions of packages are defined by the features of service. Please refer to [fedex.com](https://www.fedex.com) for the maximum dimensions.

Any package exceeding these standard measurements is automatically considered as FedEx International Priority® Freight, FedEx International Economy® Freight, FedEx® Regional Economy Freight or FedEx® Priority Freight, and billed accordingly.

A minimum billable weight of 68kg applies to FedEx International Priority Freight, FedEx International Economy Freight, FedEx Regional Economy Freight and FedEx Priority Freight shipments.

A minimum billable weight applies to shipments packaged in FedEx boxes and tubes, except for FedEx® 10kg Box and FedEx® 25kg Box.⁽²⁾ The values are defined as follows:

FedEx Box (all sizes)	1 kg
FedEx® Tube	4 kg

A flat rate applies up to 10 kg and 25 kg for FedEx 10kg Box and FedEx 25kg Box respectively. Above this weight an increment for each additional kilogram is added.

FedEx Limited Liability

The liability of FedEx for loss, damage, delay or any other claim in connection with a shipment will be, in most cases, limited by the applicable international conventions or national transport laws. In some cases, liability may be excluded altogether, and subject to compliance with time limits and other requirements set out in the applicable Conditions of Carriage.

For full details of the liability of FedEx please read the applicable Conditions of Carriage carefully. If liability is accepted, the limit may vary depending upon the service used.

Maximum Liability: Declared Value for Carriage

The sender may elect to pay an additional charge to specify a Declared Value for Carriage on the Air Waybill or Waybill, above the standard limits of liability. FedEx does not provide a cargo all-risks insurance.

A fee will be assessed for each additional US\$100 (or part thereof) of liability that FedEx accepts above the standard limits of liability. A more detailed quote can be gained when booking a shipment. The Declared Value for Carriage is limited to a maximum amount and may vary by location.

For more information including latest amounts in local currency, please see details in the Value Added Services and Surcharges document.

For FedEx® International Connect Plus, some details in the Maximum Liability section do not apply to this service including Declared Value for Carriage for FedEx Envelope or FedEx Pak.

(1) For FedEx® Regional Economy and FedEx Regional Economy Freight, DIM divisor is 4 000. FedEx Regional Economy and FedEx Regional Economy Freight are our intra-Europe economy services and are available to selected customers only. For further information, please contact your local Sales Representative.

(2) FedEx boxes and tubes as well as FedEx 10kg Box and FedEx 25kg Box are not available for shipping with our domestic services. For further information, please contact your local Sales Representative.

Shipping in Europe? FedEx offers a range of solutions to suit your timing and budget. Choose one of our express services with different options of delivery time during the day. Or select an economy service and choose a suitable delivery date, while saving on your costs.

EUROPE

URGENT*

- IPE** ▶ FedEx International Priority® Express
- IP** ▶ FedEx International Priority®
- IPF** ▶ FedEx International Priority® Freight

LESS URGENT*

- IE** ▶ FedEx International Economy®
- IEF** ▶ FedEx International Economy® Freight
- RE** ▶ FedEx® Regional Economy
- REF** ▶ FedEx® Regional Economy Freight

DESTINATION	ZONE	IPE	IP	IPF	IE	IEF	RE	REF
Albania	X	-	✓	✓	✓	✓	-	-
Andorra		-	U	-	V	-	-	-
Austria (EU)	R	✓	✓	✓	-	-	✓	✓
Belgium (EU)	T	✓	✓	✓	-	-	✓	✓
Bosnia-Herzegovina	X	-	✓	✓	✓	✓	-	-
Bulgaria (EU)	V	-	✓	✓	-	-	✓	✓
Croatia (EU)	T	-	✓	✓	-	-	✓	✓
Cyprus (EU)	X	-	✓	✓	✓	✓	-	-
Czech Republic (EU)	R	✓	✓	✓	-	-	✓	✓
Denmark (EU)	U	✓	✓	✓	-	-	✓	✓
Estonia (EU)	V	-	✓	✓	-	-	✓	✓
Faroe Islands**	E	-	✓	-	✓	-	-	-
Finland (EU)	U	✓	✓	✓	-	-	✓	✓
France (EU)	T	✓	✓	✓	-	-	✓	✓
Germany (EU)	S	✓	✓	✓	-	-	✓	✓
Gibraltar	U	-	✓	-	✓	-	-	-
Greece (EU)	U	✓	✓	✓	-	-	✓	✓
Greenland**	E	-	✓	-	✓	-	-	-
Iceland	X	-	✓	✓	✓	✓	-	-
Ireland (EU)	T	✓	✓	✓	-	-	✓	✓
Italy (EU)	T	✓	✓	✓	-	-	✓	✓
Latvia (EU)	V	-	✓	✓	-	-	✓	✓
Liechtenstein	W	-	✓	-	✓	✓	-	-
Lithuania (EU)	V	-	✓	✓	-	-	✓	✓
Luxembourg (EU)	T	✓	✓	✓	-	-	✓	✓
Malta (EU)	X	-	✓	✓	✓	✓	-	-

DESTINATION	ZONE	IPE	IP	IPF	IE	IEF	RE	REF
Moldova	X	-	✓	✓	✓	✓	-	-
Monaco	T	-	✓	✓	✓	✓	-	-
Montenegro	X	-	✓	✓	✓	✓	-	-
Netherlands (EU)	T	✓	✓	✓	-	-	✓	✓
North Macedonia	X	-	✓	✓	✓	✓	-	-
Norway	W	✓	✓	✓	-	-	✓	✓
Poland (EU)	S	✓	✓	✓	-	-	✓	✓
Portugal (EU)	V	✓	✓	✓	-	-	✓	✓
Romania (EU)	S	✓	✓	✓	-	-	✓	✓
San Marino	T	-	✓	✓	✓	✓	-	-
Serbia		-	X	X	-	-	W	W
Slovak Republic (EU)	R	✓	✓	✓	-	-	✓	✓
Slovenia (EU)	T	-	✓	✓	-	-	✓	✓
Spain (EU)	U	✓	✓	✓	-	-	✓	✓
Sweden (EU)	V	✓	✓	✓	-	-	✓	✓
Switzerland	W	✓	✓	✓	-	-	✓	✓
Turkey		-	X	X	-	-	W	W
Ukraine	X	-	✓	-	-	-	-	-
United Kingdom	Y	✓	✓	✓	-	-	✓	✓
Vatican City		-	T	T	R	R	-	-

✓ Service available - Service not available (EU) Part of the European Union

The service availability described in this document might vary by postal code and throughout the year.

* For FedEx International First® and FedEx® International Connect Plus zoning information, please refer to the dedicated FIF and FICP documents.

** For Faroe Islands and Greenland, please refer to the World Rates.



FedEx International Priority® Express (IPE)

WEIGHT (KG)	ZONE R	ZONE S	ZONE T	ZONE U	ZONE V	ZONE W	ZONE X	ZONE Y
	HUF	HUF	HUF	HUF	HUF	HUF	HUF	HUF

Rates when using FedEx® Envelope/FedEx® Pak (0,5 - 2,5 kg)

FedEx Envelope								
0,5	20 618	20 637	22 464	23 761	24 541	25 552	29 824	25 176
FedEx Pak								
0,5	20 627	20 666	22 490	23 790	24 577	25 586	29 825	25 205
1	21 440	22 362	24 771	26 083	26 955	28 060	32 544	27 583
1,5	22 253	24 057	27 052	28 376	29 333	30 534	35 263	29 961
2	23 066	25 752	29 333	30 669	31 711	33 008	37 982	32 339
2,5	23 879	27 447	31 614	32 962	34 089	35 482	40 701	34 717

Rates when using FedEx® 10kg and 25kg Box

FedEx 10kg Box								
≤ 10	30 529	40 655	49 493	51 012	52 801	54 680	62 295	53 591
Additional kg	602	3 397	4 408	4 488	5 576	5 722	6 280	4 551
FedEx 25kg Box								
≤ 25	40 549	74 728	94 665	96 764	105 781	109 140	122 199	100 586
Additional kg	700	3 578	4 536	4 704	5 572	5 722	6 280	4 736

Rates when using other packaging material

0,5	21 717	21 768	23 720	25 129	25 928	27 004	31 737	26 498
1	22 519	23 485	26 063	27 482	28 371	29 520	34 515	28 961
1,5	23 320	25 202	28 406	29 835	30 814	32 036	37 293	31 424
2	24 121	26 919	30 749	32 188	33 257	34 552	40 071	33 887
2,5	24 922	28 636	33 092	34 541	35 700	37 068	42 849	36 350
3	25 723	30 353	35 435	36 894	38 143	39 584	45 627	38 813
3,5	26 524	32 070	37 778	39 247	40 586	42 100	48 405	41 276
4	27 325	33 787	40 121	41 600	43 029	44 616	51 183	43 739
4,5	28 126	35 504	42 464	43 953	45 472	47 132	53 961	46 202
5	28 927	37 221	44 807	46 306	47 915	49 648	56 739	48 665
5,5	29 728	38 938	47 150	48 659	50 358	52 164	59 517	51 128
6	30 529	40 655	49 493	51 012	52 801	54 680	62 295	53 591
6,5	31 330	42 372	51 836	53 365	55 244	57 196	65 073	56 054
7	32 131	44 089	54 179	55 718	57 687	59 712	67 851	58 517
7,5	32 932	45 806	56 522	58 071	60 130	62 228	70 629	60 980
8	33 733	47 523	58 865	60 424	62 573	64 744	73 407	63 443
8,5	34 534	49 240	61 208	62 777	65 016	67 260	76 185	65 906
9	35 335	50 957	63 551	65 130	67 459	69 776	78 963	68 369
9,5	36 136	52 674	65 894	67 483	69 902	72 292	81 741	70 832
10	36 937	54 391	68 237	69 836	72 345	74 808	84 519	73 295
Additional 0,5 kg	301	1 703	2 206	2 244	2 790	2 861	3 140	2 277
21	43 615	91 763	116 751	119 320	133 641	137 750	153 599	123 420
Additional 0,5 kg	350	1 789	2 268	2 352	2 786	2 861	3 140	2 368
30	49 915	123 965	157 575	161 656	183 789	189 248	210 119	166 044
Additional 0,5 kg	334	1 789	2 268	2 352	2 880	2 964	3 361	2 368
45	59 935	177 635	225 615	232 216	270 189	278 168	310 398	237 084
Additional 0,5 kg	334	1 789	2 268	2 352	2 880	2 964	3 342	2 368
70,5	76 969	268 874	341 283	352 168	417 069	429 332	480 840	355 865

Rate per kg (multiply by total shipment weight)								
71-99	1 097	3 898	4 857	5 009	5 920	6 148	6 981	5 013
100-299	1 097	3 898	4 857	5 009	5 920	6 148	6 981	5 013
300-499	1 097	3 898	4 857	5 009	5 920	6 148	6 981	5 013
500-999	1 097	3 898	4 857	5 009	5 920	6 148	6 981	5 013
1 000 +	1 097	3 898	4 857	5 009	5 920	6 148	6 981	5 013

Any shipment with a weight between any of the above weight bands will be charged at the higher weight band rate.

*Availability of services and transit times may vary depending on origin and destination. Terms and conditions apply – visit [fedex.com](https://www.fedex.com) for full details of our services.



FedEx International Priority® (IP)

WEIGHT (KG)	ZONE R	ZONE S	ZONE T	ZONE U	ZONE V	ZONE W	ZONE X	ZONE Y
	HUF	HUF	HUF	HUF	HUF	HUF	HUF	HUF

Rates when using FedEx® Envelope/FedEx® Pak (0,5 - 2,5 kg)

FedEx Envelope								
0,5	19 637	19 655	21 393	22 629	23 373	24 335	28 404	23 977
FedEx Pak								
0,5	19 644	19 682	21 418	22 656	23 406	24 367	28 405	24 005
1	20 419	21 296	23 591	24 840	25 671	26 723	30 994	26 269
1,5	21 194	22 910	25 764	27 023	27 935	29 079	33 583	28 533
2	21 969	24 524	27 937	29 206	30 199	31 435	36 172	30 797
2,5	22 744	26 138	30 110	31 389	32 463	33 791	38 761	33 061

Rates when using FedEx® 10kg and 25kg Box

FedEx 10kg Box								
≤ 10kg	29 077	38 727	47 131	48 584	50 291	52 085	59 333	51 042
Additional kg	574	3 236	4 194	4 278	5 304	5 448	5 982	4 330
FedEx 25kg Box								
≤ 25kg	38 625	71 181	90 143	92 160	100 731	103 949	116 383	95 790
Additional kg	666	3 408	4 318	4 480	5 304	5 448	5 980	4 512

Rates when using other packaging material

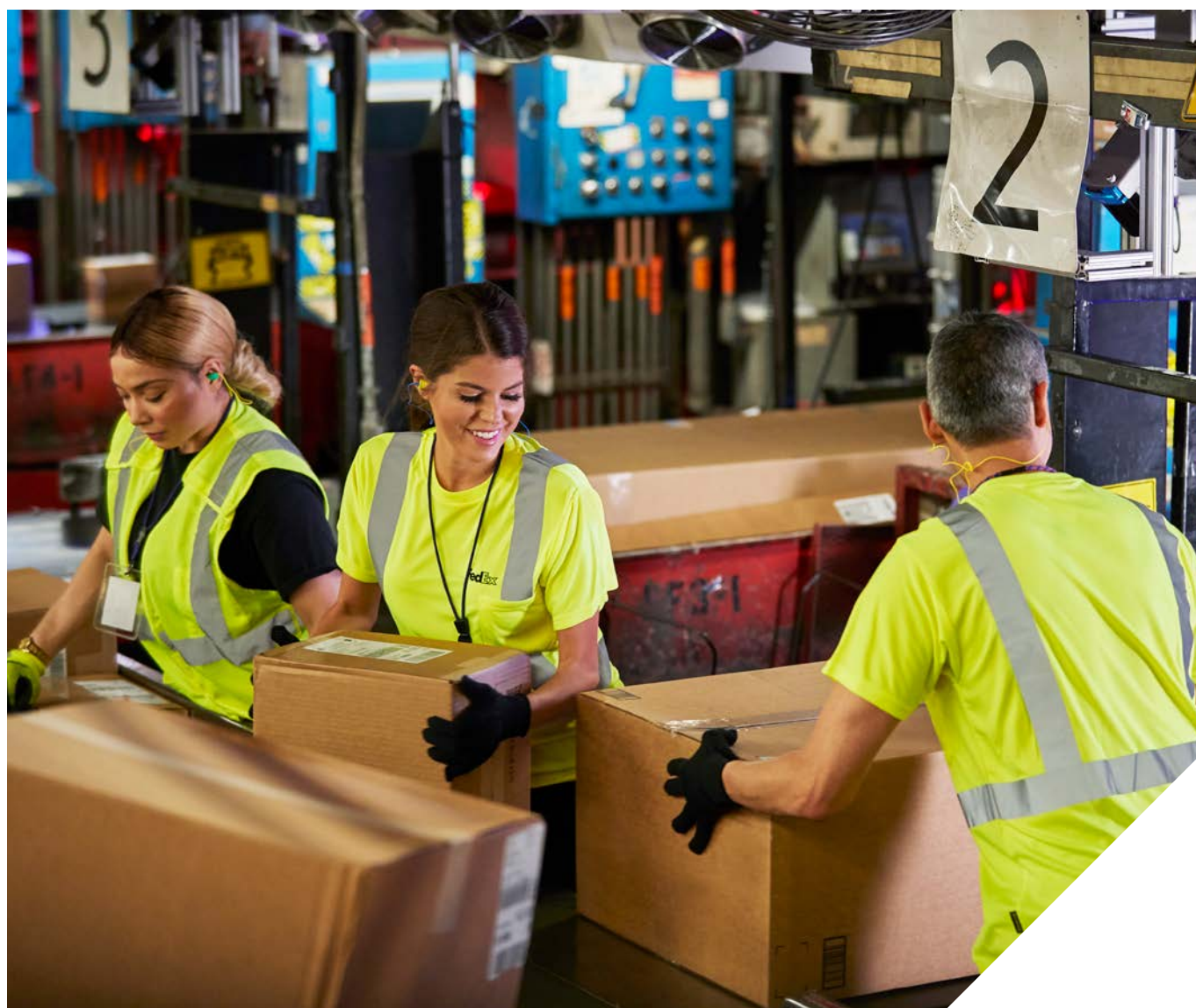
0,5	20 684	20 731	22 590	23 933	24 693	25 718	30 227	25 236
1	21 447	22 367	24 821	26 174	27 021	28 115	32 873	27 582
1,5	22 210	24 003	27 052	28 415	29 348	30 512	35 519	29 928
2	22 973	25 639	29 283	30 656	31 675	32 909	38 165	32 274
2,5	23 736	27 275	31 514	32 897	34 002	35 306	40 811	34 620
3	24 499	28 911	33 745	35 138	36 329	37 703	43 457	36 966
3,5	25 262	30 547	35 976	37 379	38 656	40 100	46 103	39 312
4	26 025	32 183	38 207	39 620	40 983	42 497	48 749	41 658
4,5	26 788	33 819	40 438	41 861	43 310	44 894	51 395	44 004
5	27 551	35 455	42 669	44 102	45 637	47 291	54 041	46 350
5,5	28 314	37 091	44 900	46 343	47 964	49 688	56 687	48 696
6	29 077	38 727	47 131	48 584	50 291	52 085	59 333	51 042
6,5	29 840	40 363	49 362	50 825	52 618	54 482	61 979	53 388
7	30 603	41 999	51 593	53 066	54 945	56 879	64 625	55 734
7,5	31 366	43 635	53 824	55 307	57 272	59 276	67 271	58 080
8	32 129	45 271	56 055	57 548	59 599	61 673	69 917	60 426
8,5	32 892	46 907	58 286	59 789	61 926	64 070	72 563	62 772
9	33 655	48 543	60 517	62 030	64 253	66 467	75 209	65 118
9,5	34 418	50 179	62 748	64 271	66 580	68 864	77 855	67 464
10	35 181	51 815	64 979	66 512	68 907	71 261	80 501	69 810
Additional 0,5 kg	287	1 623	2 097	2 141	2 652	2 724	2 992	2 165
21	41 541	87 402	111 178	113 633	127 251	131 189	146 283	117 541
Additional 0,5 kg	333	1 704	2 159	2 240	2 652	2 724	2 990	2 256
30	47 535	118 074	150 040	153 953	174 987	180 221	200 103	158 149
Additional 0,5 kg	321	1 704	2 159	2 240	2 760	2 823	3 184	2 256
45	57 078	169 194	214 810	221 153	257 265	264 911	295 623	225 829
Additional 0,5 kg	318	1 704	2 159	2 240	2 742	2 823	3 184	2 256
70,5	73 296	256 098	324 919	335 393	397 107	408 884	458 007	338 929
Rate per kg (multiply by total shipment weight)								
71-99	1 045	3 712	4 625	4 771	5 638	5 855	6 649	4 774
100-299	1 045	3 712	4 625	4 771	5 638	5 855	6 649	4 774
300-499	1 045	3 712	4 625	4 771	5 638	5 855	6 649	4 774
500-999	1 045	3 712	4 625	4 771	5 638	5 855	6 649	4 774
1 000 +	1 045	3 712	4 625	4 771	5 638	5 855	6 649	4 774

FedEx International Priority® Freight (IPF)

WEIGHT (KG)	ZONE R	ZONE S	ZONE T	ZONE U	ZONE V	ZONE W	ZONE X	ZONE Y
	HUF	HUF	HUF	HUF	HUF	HUF	HUF	HUF
68	73 780	264 452	331 908	342 244	404 532	420 036	477 020	342 448
68,5	74 865	268 341	336 789	347 277	410 481	426 213	484 035	347 484
69	74 865	268 341	336 789	347 277	410 481	426 213	484 035	347 484
69,5	75 950	272 230	341 670	352 310	416 430	432 390	491 050	352 520
70	75 950	272 230	341 670	352 310	416 430	432 390	491 050	352 520
70,5	77 035	276 119	346 551	357 343	422 379	438 567	498 065	357 556
Rate per kg (multiply by total shipment weight)								
71-99	1 085	3 889	4 881	5 033	5 949	6 177	7 015	5 036
100-299	1 085	3 889	4 881	5 033	5 949	6 177	7 015	5 036
300-499	1 085	3 889	4 881	5 033	5 949	6 177	7 015	5 036
500-999	1 085	3 889	4 881	5 033	5 949	6 177	7 015	5 036
1 000 +	1 085	3 889	4 881	5 033	5 949	6 177	7 015	5 036

Shipments must be properly palletized and shrink-wrapped. See the packaging guidelines on [fedex.com](https://www.fedex.com). Any shipment with a weight between any of the above weight bands will be charged at the higher weight band rate.

* Availability of services and transit times may vary depending on origin and destination. Terms and conditions apply – visit [fedex.com](https://www.fedex.com) for full details of our services.





When timing is everything, use our early morning delivery services* for your shipments in Europe

FedEx International First® (FIF)

DESTINATION	ZONE	DESTINATION	ZONE	DESTINATION	ZONE
Austria (EU)	R	Ireland (EU)	T	Spain (EU)	U
Belgium (EU)	T	Italy (EU)	T	Sweden (EU)	V
Czech Republic (EU)	R	Luxembourg (EU)	T	Switzerland	W
Denmark (EU)	U	Netherlands (EU)	T	United Kingdom	Y
France (EU)	T	Poland (EU)	S		
Germany (EU)	S	Portugal (EU)	V		

(EU) = Part of the European Union.

WEIGHT (KG)	ZONE R	ZONE S	ZONE T	ZONE U	ZONE V	ZONE W	ZONE Y
	HUF	HUF	HUF	HUF	HUF	HUF	HUF

Rates when using FedEx® Envelope/FedEx® Pak (0,5 - 2,5 kg)

FedEx Envelope							
0,5	37 316	37 528	39 357	40 656	41 438	42 450	42 072
FedEx Pak							
0,5	37 325	37 558	39 383	40 685	41 473	42 483	42 101
1	38 493	40 019	42 694	44 011	44 925	46 074	45 553
1,5	39 661	42 480	46 005	47 337	48 377	49 665	49 005
2	40 829	44 941	49 316	50 663	51 829	53 256	52 457
2,5	41 997	47 402	52 627	53 989	55 281	56 847	55 909

Rates when using other packaging material

0,5	38 407	38 660	40 612	42 024	42 824	43 900	43 391
1	39 544	41 152	44 011	45 440	46 371	47 552	46 966
1,5	40 681	43 644	47 409	48 856	49 917	51 204	50 541
2	41 818	46 136	50 807	52 272	53 463	54 856	54 116
2,5	42 955	48 628	54 205	55 688	57 009	58 508	57 691
3	44 092	51 120	57 603	59 104	60 555	62 160	61 266
3,5	45 229	53 612	61 001	62 520	64 101	65 812	64 841
4	46 366	56 104	64 399	65 936	67 647	69 464	68 416
4,5	47 503	58 596	67 797	69 352	71 193	73 116	71 991
5	48 640	61 088	71 195	72 768	74 739	76 768	75 566
5,5	49 777	63 581	74 594	76 184	78 287	80 421	79 141
6	50 914	66 074	77 992	79 600	81 833	84 074	82 716
6,5	52 051	68 567	81 390	83 016	85 379	87 727	86 291
7	53 188	71 060	84 788	86 432	88 925	91 380	89 866
7,5	54 325	73 553	88 186	89 848	92 471	95 033	93 441
8	55 462	76 046	91 584	93 264	96 017	98 686	97 016
8,5	56 599	78 539	94 982	96 680	99 563	102 339	100 591
9	57 736	81 032	98 380	100 096	103 109	105 992	104 166
9,5	58 873	83 525	101 778	103 512	106 655	109 645	107 741

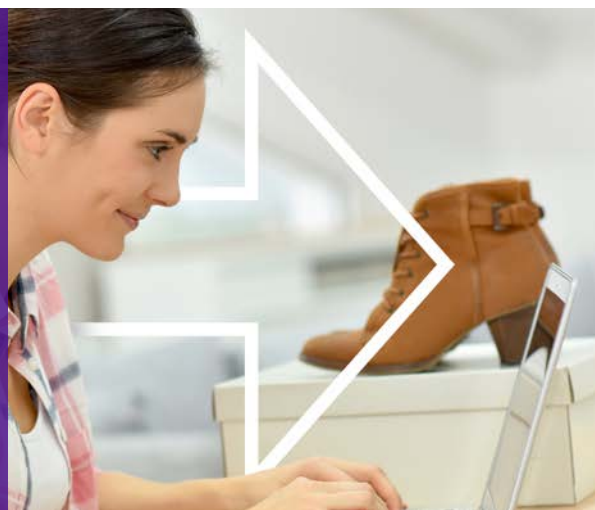
WEIGHT (KG)	ZONE R	ZONE S	ZONE T	ZONE U	ZONE V	ZONE W	ZONE Y
	HUF	HUF	HUF	HUF	HUF	HUF	HUF
10	60 010	86 018	105 176	106 928	110 201	113 298	111 316
Additional 0,5 kg	441	2 459	3 193	3 251	4 042	4 137	3 296
21	69 756	140 254	175 521	178 615	199 125	204 312	183 936
Additional 0,5 kg	485	2 597	3 291	3 416	4 042	4 137	3 402
30	78 486	187 000	234 759	240 103	271 881	278 778	245 172
Additional 0,5 kg	480	2 597	3 291	3 416	4 177	4 315	3 402
45	92 886	264 910	333 489	342 584	397 206	408 236	347 241
Additional 0,5 kg	480	2 597	3 291	3 416	4 177	4 315	3 402
70,5	117 366	397 357	501 330	516 800	610 233	628 301	520 743
Rate per kg (multiply by total shipment weight)							
71-99	1 666	5 637	7 114	7 333	8 658	8 914	7 387
100-299	1 666	5 637	7 114	7 333	8 658	8 914	7 387
300-499	1 666	5 637	7 114	7 333	8 658	8 914	7 387
500-999	1 666	5 637	7 114	7 333	8 658	8 914	7 387
1 000 +	1 666	5 637	7 114	7 333	8 658	8 914	7 387

Shipments must be properly packed. See the packaging guidelines on [fedex.com](https://www.fedex.com). Any shipment with a weight between any of the above weight bands will be charged at the higher weight band rate.

* Availability of services and transit times may vary depending on origin and destination. Terms and conditions apply – visit [fedex.com](https://www.fedex.com) for full details of our services.



Benefit from our dedicated e-commerce service
FedEx® International Connect Plus (FICP)



Find the zone for your shipment's destination.

Availability of service and transit times may vary depending on origin and destination. For more information, please contact your FedEx Sales Representative or visit fedex.com/ficp.

DESTINATION	Zone	DESTINATION	Zone	DESTINATION	Zone
Albania	X	Gibraltar	U	North Macedonia	X
Andorra	U	Greece (EU)	U	Norway	W
Austria (EU)	R	Greenland*	E	Poland (EU)	S
Belgium (EU)	T	Iceland	X	Portugal (EU)	V
Bosnia-Herzegovina	X	Ireland (EU)	T	Romania (EU)	S
Bulgaria (EU)	V	Italy (EU)	T	San Marino	T
Croatia (EU)	T	Latvia (EU)	V	Serbia	X
Cyprus (EU)	X	Liechtenstein	W	Slovak Republic (EU)	R
Czech Republic (EU)	R	Lithuania (EU)	V	Slovenia (EU)	T
Denmark (EU)	U	Luxembourg (EU)	T	Spain (EU)	U
Estonia (EU)	V	Malta (EU)	X	Sweden (EU)	V
Faroe Islands*	E	Moldova	X	Switzerland	W
Finland (EU)	U	Monaco	T	Turkey	X
France (EU)	T	Montenegro	X	United Kingdom	Y
Germany (EU)	S	Netherlands (EU)	T	Vatican City	T

(EU) = Part of the European Union. * For Faroe Islands and Greenland, please refer to the World Rates.

Find the flat rate corresponding to your zone and shipment weight.

WEIGHT (KG)	ZONE R	ZONE S	ZONE T	ZONE U	ZONE V	ZONE W	ZONE X	ZONE Y
	HUF	HUF	HUF	HUF	HUF	HUF	HUF	HUF
0,5-5	14 546	17 258	21 626	22 838	23 649	24 505	26 274	24 148
5,5-10	17 868	21 293	26 359	28 251	29 466	30 728	38 217	29 200
10,5-15	23 407	28 508	35 278	38 400	40 295	42 231	59 842	38 524
15,5-20	28 945	36 047	44 880	49 295	51 882	54 490	82 614	48 445
20,5-25	34 482	43 586	54 484	60 193	63 470	66 748	105 386	58 370
25,5-32,5	41 127	52 634	66 007	73 268	77 370	81 457	132 713	70 276
Rate per kg (multiply by total shipment weight)								
33-68	1 419	1 816	2 296	2 563	2 706	2 847	4 661	2 440

Any shipment with a weight between any of the above weight bands will be charged at the higher weight band rate.



FedEx® Regional Economy (RE)

WEIGHT (KG)	ZONE R	ZONE S	ZONE T	ZONE U	ZONE V	ZONE W	ZONE Y
	HUF	HUF	HUF	HUF	HUF	HUF	HUF
0,5	14 445	17 139	21 475	22 678	23 483	24 335	23 733
1	14 445	17 139	21 475	22 678	23 483	24 335	23 733
1,5	14 445	17 139	21 475	22 678	23 483	24 335	23 733
2	14 445	17 139	21 475	22 678	23 483	24 335	23 733
2,5	14 445	17 139	21 475	22 678	23 483	24 335	23 733
3	14 445	17 139	21 475	22 678	23 483	24 335	23 733
3,5	14 445	17 139	21 475	22 678	23 483	24 335	23 733
4	14 445	17 139	21 475	22 678	23 483	24 335	23 733
4,5	14 445	17 139	21 475	22 678	23 483	24 335	23 733
5	14 445	17 139	21 475	22 678	23 483	24 335	23 733
5,5	15 544	18 476	23 043	24 470	25 409	26 396	25 301
6	15 544	18 476	23 043	24 470	25 409	26 396	25 301
6,5	16 643	19 813	24 611	26 262	27 335	28 457	26 869
7	16 643	19 813	24 611	26 262	27 335	28 457	26 869
7,5	17 742	21 150	26 179	28 054	29 261	30 518	28 437
8	17 742	21 150	26 179	28 054	29 261	30 518	28 437
8,5	18 841	22 487	27 747	29 846	31 187	32 579	30 005
9	18 841	22 487	27 747	29 846	31 187	32 579	30 005
9,5	19 940	23 824	29 315	31 638	33 113	34 640	31 573
10	19 940	23 824	29 315	31 638	33 113	34 640	31 573
Additional 1 kg	1 099	1 498	1 908	2 163	2 301	2 435	1 908
30	43 022	55 016	69 637	77 604	81 970	86 180	71 895
Additional 5 kg	2 201	2 730	4 070	4 869	5 138	5 275	4 070
50	51 826	65 936	85 917	97 080	102 522	107 280	88 175
Additional 5 kg	2 201	2 731	4 190	4 869	5 140	5 274	4 190
70	59 135	81 105	114 436	133 531	152 586	171 702	114 435
Rate per kg (multiply by total shipment weight)							
71 +	846	1 159	1 635	1 908	2 179	2 453	1 635

FedEx® Regional Economy Freight (REF)

WEIGHT (KG)	ZONE R	ZONE S	ZONE T/Y	ZONE U	ZONE V	ZONE W
	HUF	HUF	HUF	HUF	HUF	HUF
Rate per kg (multiply by total shipment weight)						
68-99	846	1 159	1 635	1 908	2 179	2 453
100-299	846	1 159	1 635	1 908	2 179	2 453
300-499	846	1 159	1 635	1 908	2 179	2 453
500-999	846	1 159	1 635	1 908	2 179	2 453
1 000 +	846	1 159	1 635	1 908	2 179	2 453

FedEx Regional Economy Freight shipments must be properly palletized and shrink-wrapped. See the packaging guidelines on [fedex.com](https://www.fedex.com). Any shipment with a weight between any of the above weight bands will be charged at the higher weight band rate. FedEx Regional Economy and FedEx Regional Economy Freight are our intra-Europe economy services and are available to selected customers only. For further information, please contact your local Sales Representative.



Save on your less urgent shipments with our economy services

FedEx International Economy® (IE)

WEIGHT (KG)	ZONE R	ZONE T	ZONE U	ZONE V	ZONE W	ZONE X
	HUF	HUF	HUF	HUF	HUF	HUF
0,5	22 590	22 590	23 932	23 932	25 679	27 536
1	22 590	22 590	23 932	23 932	25 679	27 536
1,5	22 590	22 590	23 932	23 932	25 679	27 536
2	22 590	22 590	23 932	23 932	25 679	27 536
2,5	22 590	22 590	23 932	23 932	25 679	27 536
3	22 590	22 590	23 932	23 932	25 679	27 536
3,5	22 590	22 590	23 932	23 932	25 679	27 536
4	22 590	22 590	23 932	23 932	25 679	27 536
4,5	22 590	22 590	23 932	23 932	25 679	27 536
5	22 590	22 590	23 932	23 932	25 679	27 536
5,5	24 312	24 312	25 822	25 822	27 852	31 705
6	24 312	24 312	25 822	25 822	27 852	31 705
6,5	25 965	25 965	27 712	27 712	30 025	35 874
7	25 965	25 965	27 712	27 712	30 025	35 874
7,5	27 617	27 617	29 602	29 602	32 198	40 043
8	27 617	27 617	29 602	29 602	32 198	40 043
8,5	29 271	29 271	31 492	31 492	34 369	44 212
9	29 271	29 271	31 492	31 492	34 369	44 212
9,5	30 923	30 923	33 382	33 382	36 542	48 381
10	30 923	30 923	33 382	33 382	36 542	48 381
Additional 1 kg	2 013	2 013	2 284	2 284	2 571	4 773
30	71 182	71 182	79 075	79 075	87 940	143 839
Additional 5 kg	4 255	4 255	5 211	5 211	5 562	9 253
50	88 203	88 203	99 920	99 920	110 185	180 851
Additional 5 kg	4 412	4 412	5 001	5 001	5 503	9 919
70,5	110 854	110 854	130 371	130 371	153 678	232 049
Rate per kg (multiply by total shipment weight)						
71-99	1 747	1 747	2 038	2 038	2 622	3 641
100-299	1 747	1 747	2 038	2 038	2 622	3 641
300-499	1 747	1 747	2 038	2 038	2 622	3 641
500-999	1 747	1 747	2 038	2 038	2 622	3 641
1 000 +	1 747	1 747	2 038	2 038	2 622	3 641

FedEx International Economy® Freight (IEF)

WEIGHT (KG)	ZONE R	ZONE T	ZONE U	ZONE V	ZONE W	ZONE X
	HUF	HUF	HUF	HUF	HUF	HUF
Rate per kg (multiply by total shipment weight)						
68-99	1 830	1 830	2 133	2 133	2 745	3 812
100-299	1 830	1 830	2 133	2 133	2 745	3 812
300-499	1 830	1 830	2 133	2 133	2 745	3 812
500-999	1 830	1 830	2 133	2 133	2 745	3 812
1 000 +	1 830	1 830	2 133	2 133	2 745	3 812

Shipments must be properly palletized and shrink-wrapped. See the packaging guidelines on [fedex.com](https://www.fedex.com). Any shipment with a weight between any of the above weight bands will be charged at the higher weight band rate. FedEx International Economy and FedEx International Economy Freight rates may be different if FedEx® Regional Economy and FedEx® Regional Economy Freight are available to you.

Shipping around the World? FedEx offers a range of solutions to suit your timing and budget. Choose one of our express services with different options of delivery time during the day. Or select an economy service and choose a suitable delivery date, while saving on your costs.

WORLD

URGENT*

- IPE** ▶ FedEx International Priority® Express
- IP** ▶ FedEx International Priority®
- IPF** ▶ FedEx International Priority® Freight

LESS URGENT*

- IE** ▶ FedEx International Economy®
- IEF** ▶ FedEx International Economy® Freight

DESTINATION	ZONE	IPE	IP	IPF	IE	IEF
Algeria	C	-	✓	✓	✓	✓
Angola	E	-	✓	✓	✓	-
Anguilla	D	-	✓	-	✓	-
Antigua & Barbuda	D	-	✓	✓	✓	-
Argentina	D	-	✓	✓	✓	✓
Armenia	C	-	✓	-	✓	-
Aruba	D	-	✓	✓	✓	-
Australia	G	✓	✓	✓	✓	✓
Azerbaijan	C	-	✓	-	✓	-
Bahamas	D	-	✓	✓	✓	✓
Bahrain	C	-	✓	✓	✓	✓
Bangladesh	C	-	✓	✓	✓	✓
Barbados	D	-	✓	✓	✓	✓
Belize	D	-	✓	✓	✓	-
Benin	E	-	✓	-	✓	-
Bermuda	D	-	✓	✓	✓	-
Bhutan	C	-	✓	-	✓	-
Bolivia	D	-	✓	-	✓	-
Bonaire, Saba, St. Eustatius	D	-	✓	-	✓	-
Botswana	E	-	✓	✓	✓	✓
Brazil	D	-	✓	✓	✓	✓
Brunei	C	-	✓	-	✓	-
Burkina Faso	E	-	✓	-	✓	-
Burundi	E	-	✓	✓	✓	-
Cambodia	B	-	✓	-	✓	-
Cameroon	E	-	✓	-	✓	-
Canada	A	✓	✓	✓	✓	✓
Cape Verde	E	-	✓	-	✓	-
Cayman Islands	D	-	✓	✓	✓	✓
Chad	E	-	✓	-	✓	-
Chile	D	-	✓	✓	✓	✓
China	F	-	✓	✓	✓	✓
Colombia	D	-	✓	✓	✓	✓
Congo	E	-	✓	-	✓	-
Congo, Dem. Rep. of	E	-	✓	-	✓	-
Cook Islands	E	-	✓	-	✓	-
Costa Rica	D	-	✓	✓	✓	✓
Curacao	D	-	✓	✓	✓	-
Djibouti	E	-	✓	✓	✓	✓
Dominica	D	-	✓	-	✓	-
Dominican Republic	D	-	✓	✓	✓	✓
East Timor	B	-	✓	-	✓	-
Ecuador	D	-	✓	✓	✓	✓
Egypt	C	-	✓	✓	✓	✓
El Salvador	D	-	✓	✓	✓	✓
Eritrea	E	-	✓	-	✓	-
Eswatini (Swaziland)	E	-	✓	✓	✓	✓
Ethiopia	E	-	✓	✓	✓	✓
Fiji	E	-	✓	-	✓	-
French Guiana	D	-	✓	-	✓	-
French Polynesia	E	-	✓	✓	✓	-
Gabon	E	-	✓	-	✓	-
Gambia	E	-	✓	-	✓	-

DESTINATION	ZONE	IPE	IP	IPF	IE	IEF
Georgia	C	-	✓	-	✓	✓
Ghana	E	-	✓	✓	✓	✓
Grenada	D	-	✓	✓	✓	-
Guadeloupe	D	-	✓	✓	✓	✓
Guam	E	-	✓	✓	✓	✓
Guatemala	D	-	✓	✓	✓	✓
Guinea	E	-	✓	-	✓	-
Guyana	D	-	✓	✓	✓	-
Haiti	D	-	✓	✓	✓	-
Honduras	D	-	✓	✓	✓	✓
Hong Kong SAR, China	F	✓	✓	✓	✓	✓
India	C	-	✓	✓	✓	✓
Indonesia	B	-	✓	✓	✓	✓
Iraq	E	-	✓	✓	✓	✓
Israel	C	-	✓	✓	✓	✓
Ivory Coast	E	-	✓	✓	✓	-
Jamaica	D	-	✓	✓	✓	✓
Japan	I	✓	✓	✓	✓	✓
Jordan	C	-	✓	✓	✓	-
Kazakhstan	E	-	✓	✓	✓	-
Kenya	E	-	✓	✓	✓	✓
Korea, South	B	-	✓	✓	✓	✓
Kuwait	C	-	✓	✓	✓	✓
Kyrgyzstan	E	-	✓	✓	✓	-
Laos	B	-	✓	-	✓	-
Lebanon	C	-	✓	✓	✓	-
Lesotho	E	-	✓	-	✓	-
Liberia	E	-	✓	-	✓	-
Libya	C	-	✓	✓	✓	✓
Macao SAR, China	B	-	✓	-	✓	-
Madagascar	E	-	✓	✓	✓	-
Malawi	E	-	✓	✓	✓	✓
Malaysia	B	-	✓	✓	✓	✓
Maldives	E	-	✓	✓	✓	✓
Mali	E	-	✓	✓	✓	-
Marshall Islands	E	-	✓	-	✓	-
Martinique	D	-	✓	-	✓	-
Mauritania	E	-	✓	-	✓	-
Mauritius	E	-	✓	✓	✓	✓
Mexico	D	-	✓	✓	✓	✓
Micronesia	E	-	✓	-	✓	-
Montserrat	D	-	✓	-	✓	-
Morocco	C	-	✓	✓	✓	✓
Mozambique	E	-	✓	✓	✓	✓
Namibia	E	-	✓	-	✓	-
Nepal	C	-	✓	✓	✓	✓
New Caledonia	E	-	✓	✓	✓	✓
New Zealand	G	-	✓	✓	✓	✓
Nicaragua	D	-	✓	-	✓	-
Niger	E	-	✓	-	✓	-
Nigeria	E	-	✓	✓	✓	✓
Oman	C	-	✓	✓	✓	✓
Pakistan	C	-	✓	✓	✓	✓

DESTINATION	ZONE	IPE	IP	IPF	IE	IEF
Palau	E	-	✓	✓	✓	✓
Palestine Authority	C	-	✓	✓	✓	✓
Panama	D	-	✓	✓	✓	✓
Papua New Guinea	E	-	✓	-	✓	-
Paraguay	D	-	✓	-	✓	-
Peru	D	-	✓	✓	✓	✓
Philippines	B	-	✓	✓	✓	✓
Puerto Rico	D	-	✓	✓	✓	✓
Qatar	C	-	✓	-	✓	-
Reunion Island	E	-	✓	✓	✓	✓
Rwanda	E	-	✓	✓	✓	✓
Saipan	E	-	✓	✓	✓	✓
Samoa, West	E	-	✓	-	✓	-
Saudi Arabia	C	-	✓	✓	✓	✓
Senegal	E	-	✓	✓	✓	-
Seychelles	E	-	✓	✓	✓	-
Singapore	I	✓	✓	✓	✓	✓
South Africa	D	-	✓	✓	✓	✓
Sri Lanka	C	-	✓	✓	✓	✓
St. Kitts & Nevis	D	-	✓	✓	✓	✓
St. Lucia	D	-	✓	✓	✓	✓
St. Maarten (NL)	D	-	✓	✓	✓	-
St. Martin (FR)	D	-	✓	✓	✓	-
St. Vincent	D	-	✓	-	✓	-
Suriname	D	-	✓	-	✓	-
Taiwan, China	B	-	✓	✓	✓	✓
Tanzania	E	-	✓	✓	✓	-
Thailand	B	✓	✓	✓	✓	✓
Togo	E	-	✓	-	✓	-
Tonga	E	-	✓	-	✓	-
Trinidad & Tobago	D	-	✓	✓	✓	✓
Tunisia	C	-	✓	✓	✓	✓
Turks & Caicos Islands	D	-	✓	✓	✓	-
Uganda	E	-	✓	✓	✓	-
United Arab Emirates	C	-	✓	✓	✓	✓
Uruguay	D	-	✓	✓	✓	-
USA	H	✓	✓	✓	✓	✓
Uzbekistan	E	-	✓	✓	✓	✓
Vanuatu	E	-	✓	-	✓	-
Vietnam	B	-	✓	✓	✓	✓
Virgin Islands (GB)	D	-	✓	-	✓	-
Virgin Islands (USA)	D	-	✓	✓	✓	-
Wallis & Futuna	E	-	✓	-	✓	-
Zambia	E	-	✓	✓	✓	✓
Zimbabwe	E	-	✓	✓	✓	✓

✓ Service available - Service not available

The service availability described in this document might vary by postal code and throughout the year.

* For FedEx International First® and FedEx® International Connect Plus zoning information, please refer to the dedicated FIF and FICP documents.



Benefit from our express delivery by mid-day*

FedEx International Priority® Express (IPE)

WEIGHT (KG)	ZONE A	ZONE B/I	ZONE C	ZONE D	ZONE E	ZONE F	ZONE G	ZONE H
	HUF	HUF	HUF	HUF	HUF	HUF	HUF	HUF

Rates when using FedEx® Envelope/FedEx® Pak (0,5 - 2,5 kg)

FedEx Envelope								
0,5	29 076	39 149	44 560	46 372	47 303	37 053	42 263	27 691
FedEx Pak								
0,5	30 839	41 524	47 265	49 182	49 859	39 300	44 826	29 369
1	34 089	46 058	51 908	54 493	56 893	43 700	49 294	32 465
1,5	37 339	50 592	56 551	59 804	63 927	48 100	53 762	35 560
2	40 589	55 126	61 194	65 115	70 961	52 500	58 230	38 655
2,5	43 839	59 660	65 837	70 426	77 995	56 900	62 698	41 750

Rates when using FedEx® 10kg and 25kg Box

FedEx 10kg Box								
≤ 10	69 598	96 242	103 582	113 319	131 946	91 969	99 576	66 287
Additional kg	7 300	9 914	9 682	11 130	13 759	8 728	9 918	6 954
FedEx 25kg Box								
≤ 25	142 118	194 148	200 402	223 643	271 591	180 889	197 436	135 363
Additional kg	7 564	10 282	10 338	13 064	13 556	8 364	10 386	7 204

Rates when using other packaging material

0,5	32 251	43 317	49 394	51 467	52 701	41 287	46 842	30 716
1	35 729	48 130	54 340	57 142	59 920	45 903	51 636	34 029
1,5	39 207	52 943	59 285	62 817	67 139	50 519	56 430	37 342
2	42 685	57 756	64 230	68 492	74 358	55 135	61 224	40 655
2,5	46 163	62 569	69 175	74 167	81 577	59 751	66 018	43 968
3	49 414	67 382	74 120	79 821	88 796	64 367	70 812	47 064
3,5	52 665	72 195	79 065	85 474	96 015	68 983	75 606	50 160
4	55 916	77 008	84 010	91 127	103 234	73 599	80 400	53 256
4,5	59 167	81 821	88 955	96 780	110 453	78 215	85 194	56 352
5	62 418	86 634	93 900	102 433	117 672	82 831	89 988	59 448
5,5	66 008	91 438	98 741	107 876	124 809	87 400	94 782	62 868
6	69 598	96 242	103 582	113 319	131 946	91 969	99 576	66 287
6,5	73 188	101 046	108 423	118 762	139 083	96 538	104 370	69 706
7	76 778	105 850	113 264	124 205	146 220	101 107	109 164	73 125
7,5	80 368	110 654	118 105	129 648	153 357	105 676	113 958	76 544
8	83 958	115 458	122 946	135 091	160 494	110 245	118 752	79 963
8,5	87 548	120 262	127 787	140 534	167 631	114 814	123 546	83 382
9	91 138	125 066	132 628	145 977	174 768	119 383	128 340	86 801
9,5	94 728	129 870	137 469	151 420	181 905	123 952	133 134	90 220
10	98 318	134 674	142 310	156 863	189 042	128 521	137 928	93 639
Additional 0,5 kg	3 650	4 958	4 841	5 565	6 880	4 364	4 959	3 477
21	178 750	243 893	249 143	280 260	340 280	224 347	247 260	170 258
Additional 0,5 kg	3 782	5 141	5 169	6 532	6 778	4 182	5 193	3 602
30	246 826	336 431	342 185	397 836	462 284	299 623	340 734	235 094
Additional 0,5 kg	3 865	5 196	5 176	6 782	7 198	4 405	5 451	3 684
45	362 776	492 311	497 465	601 151	678 050	431 773	504 003	345 498
Additional 0,5 kg	3 865	5 196	5 176	6 777	7 192	4 405	5 442	3 680
70,5	559 891	757 307	761 441	946 778	1 044 842	656 428	781 545	533 178

Rate per kg (multiply by total shipment weight)								
71-99	8 166	11 384	11 535	14 115	15 786	10 928	12 164	7 776
100-299	8 166	11 384	11 535	14 115	15 786	10 928	12 164	7 776
300-499	8 166	11 384	11 535	14 115	15 786	10 928	12 164	7 776
500-999	8 166	11 384	11 535	14 115	15 786	10 928	12 164	7 776
1 000+	8 166	11 384	11 535	14 115	15 786	10 928	12 164	7 776

Any shipment with a weight between any of the above weight bands will be charged at the higher weight band rate.

*Availability of services and transit times may vary depending on origin and destination. Terms and conditions apply – visit [fedex.com](https://www.fedex.com) for full details of our services.



Benefit from our express delivery by end of business day*

FedEx International Priority® (IP)

WEIGHT (KG)	ZONE A/H	ZONE B/I	ZONE C	ZONE D	ZONE E	ZONE F	ZONE G
	HUF	HUF	HUF	HUF	HUF	HUF	HUF

Rates when using FedEx® Envelope/FedEx® Pak (0,5 - 2,5 kg)

FedEx Envelope							
0,5	27 691	37 286	42 438	44 163	45 051	35 290	40 250
FedEx Pak							
0,5	29 369	39 548	45 014	46 840	47 485	37 429	42 692
1	32 465	43 865	49 435	51 898	54 184	41 620	46 947
1,5	35 560	48 182	53 856	56 956	60 882	45 811	51 202
2	38 655	52 499	58 277	62 014	67 580	50 002	55 457
2,5	41 750	56 816	62 698	67 072	74 278	54 193	59 712

Rates when using FedEx® 10kg and 25kg Box

FedEx 10kg Box							
≤ 10kg	66 287	91 655	98 655	107 923	125 662	87 587	94 837
Additional kg	6 954	9 438	9 222	10 600	13 104	8 310	9 444
FedEx 25kg Box							
≤ 25kg	135 363	184 883	190 875	212 987	258 662	172 247	188 029
Additional kg	7 204	9 792	9 846	12 442	12 908	7 964	9 892

Rates when using other packaging material

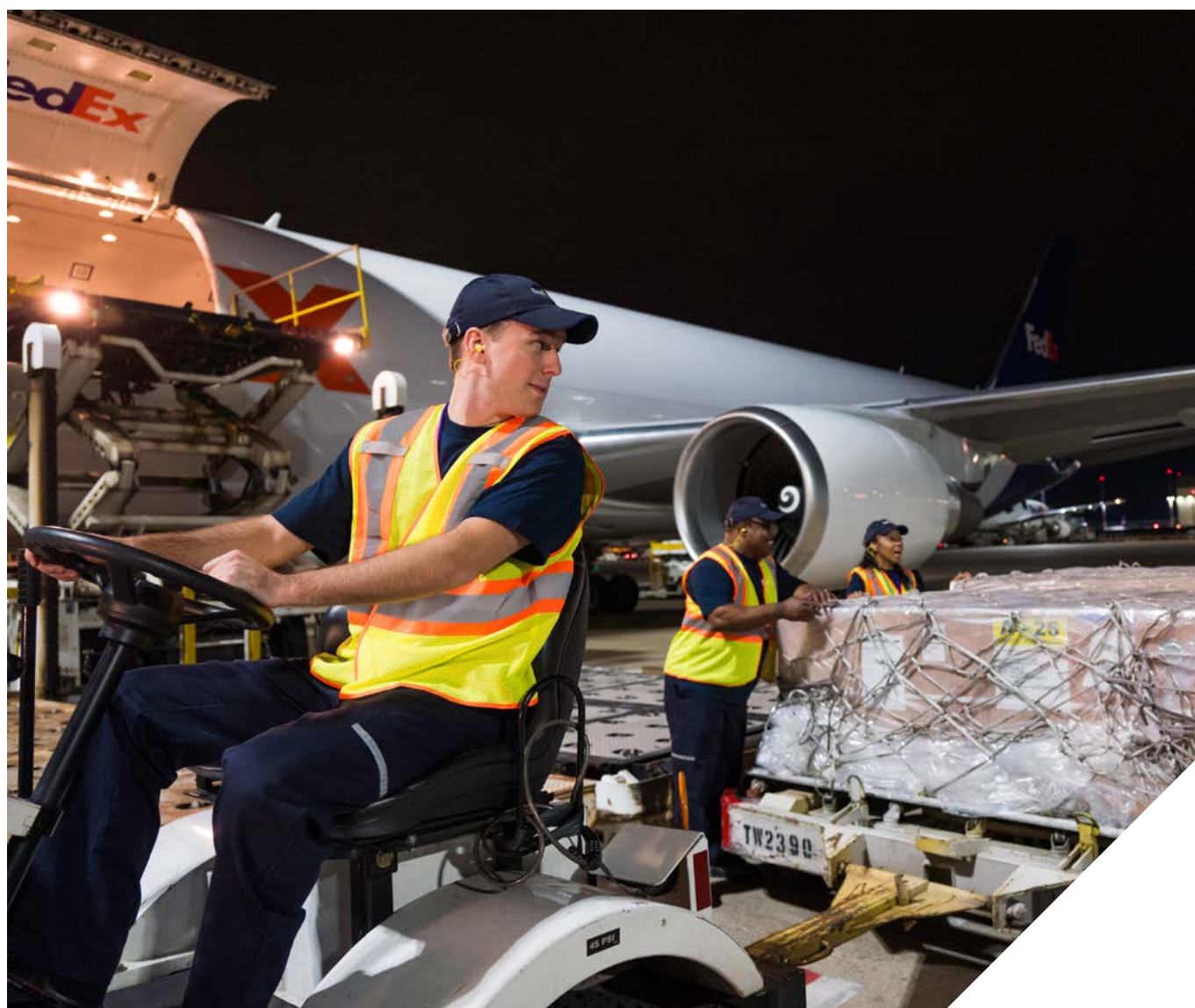
0,5	30 716	41 254	47 043	49 017	50 192	39 321	44 611
1	34 029	45 837	51 753	54 422	57 067	43 717	49 177
1,5	37 342	50 420	56 463	59 827	63 942	48 113	53 743
2	40 655	55 003	61 173	65 232	70 817	52 509	58 309
2,5	43 968	59 586	65 883	70 637	77 692	56 905	62 875
3	47 064	64 169	70 593	76 021	84 567	61 301	67 441
3,5	50 160	68 752	75 303	81 405	91 442	65 697	72 007
4	53 256	73 335	80 013	86 789	98 317	70 093	76 573
4,5	56 352	77 918	84 723	92 173	105 192	74 489	81 139
5	59 448	82 501	89 433	97 557	112 067	78 885	85 705
5,5	62 868	87 080	94 044	102 740	118 865	83 237	90 271
6	66 287	91 655	98 655	107 923	125 662	87 587	94 837
6,5	69 706	96 230	103 266	113 106	132 459	91 937	99 403
7	73 125	100 805	107 877	118 289	139 256	96 287	103 969
7,5	76 544	105 380	112 488	123 472	146 053	100 637	108 535
8	79 963	109 955	117 099	128 655	152 850	104 987	113 101
8,5	83 382	114 530	121 710	133 838	159 647	109 337	117 667
9	86 801	119 105	126 321	139 021	166 444	113 687	122 233
9,5	90 220	123 680	130 932	144 204	173 241	118 037	126 799
10	93 639	128 255	135 543	149 387	180 038	122 387	131 365
Additional 0,5 kg	3 477	4 719	4 611	5 300	6 552	4 155	4 722
21	170 258	232 252	237 297	266 908	324 090	213 632	235 479
Additional 0,5 kg	3 602	4 896	4 923	6 221	6 454	3 982	4 946
30	235 094	320 380	325 911	378 886	440 262	285 308	324 507
Additional 0,5 kg	3 684	4 948	4 931	6 453	6 850	4 194	5 182
45	345 498	468 820	473 783	572 476	645 762	411 128	479 967
Additional 0,5 kg	3 680	4 948	4 929	6 453	6 850	4 194	5 182
70,5	533 178	721 168	725 162	901 579	995 112	625 022	744 249
Rate per kg (multiply by total shipment weight)							
71-99	7 776	10 842	10 986	13 443	15 034	10 408	11 585
100-299	7 776	10 842	10 986	13 443	15 034	10 408	11 585
300-499	7 776	10 842	10 986	13 443	15 034	10 408	11 585
500-999	7 776	10 842	10 986	13 443	15 034	10 408	11 585
1 000 +	7 776	10 842	10 986	13 443	15 034	10 408	11 585

FedEx International Priority® Freight (IPF)

WEIGHT (KG)	ZONE A/H	ZONE B/I	ZONE C	ZONE D	ZONE E	ZONE F	ZONE G
	HUF	HUF	HUF	HUF	HUF	HUF	HUF
68	562 156	777 920	788 120	924 800	1 070 592	741 200	823 548
68,5	570 423	789 360	799 710	938 400	1 086 336	752 100	835 659
69	570 423	789 360	799 710	938 400	1 086 336	752 100	835 659
69,5	578 690	800 800	811 300	952 000	1 102 080	763 000	847 770
70	578 690	800 800	811 300	952 000	1 102 080	763 000	847 770
70,5	586 957	812 240	822 890	965 600	1 117 824	773 900	859 881
Rate per kg (multiply by total shipment weight)							
71-99	8 267	11 440	11 590	13 600	15 744	10 900	12 111
100-299	8 267	11 440	11 590	13 600	15 744	10 900	12 111
300-499	8 267	11 440	11 590	13 600	15 744	10 900	12 111
500-999	8 267	11 440	11 590	13 600	15 744	10 900	12 111
1 000 +	8 267	11 440	11 590	13 600	15 744	10 900	12 111

Shipments must be properly palletized and shrink-wrapped. See the packaging guidelines on [fedex.com](https://www.fedex.com). Any shipment with a weight between any of the above weight bands will be charged at the higher weight band rate.

* Availability of services and transit times may vary depending on origin and destination. Terms and conditions apply – visit [fedex.com](https://www.fedex.com) for full details of our services.





FedEx International First® (FIF)

WEIGHT (KG)	USA HUF	Canada HUF	India HUF	Brazil, Mexico and Puerto Rico HUF
Rates when using FedEx® Envelope/FedEx® Pak (0,5 - 2,5 kg)				
FedEx Envelope				
0,5	51 447	52 834	68 332	70 144
FedEx Pak				
0,5	53 128	54 597	71 039	72 958
1	57 000	58 663	76 849	79 602
1,5	60 872	62 729	82 659	86 246
2	64 744	66 795	88 469	92 890
2,5	68 616	70 861	94 279	99 534
Rates when using other packaging material				
0,5	54 474	56 011	73 164	75 244
1	58 618	60 362	79 353	82 345
1,5	62 762	64 713	85 541	89 446
2	66 906	69 064	91 729	96 547
2,5	71 050	73 415	97 917	103 648
3	74 925	77 484	104 105	110 719
3,5	78 800	81 553	110 293	117 790
4	82 675	85 622	116 481	124 861
4,5	86 550	89 691	122 669	131 932
5	90 425	93 760	128 857	139 003
5,5	94 702	98 251	134 909	145 812
6	98 979	102 742	140 959	152 621
6,5	103 256	107 233	147 009	159 430
7	107 533	111 724	153 059	166 239
7,5	111 810	116 215	159 109	173 048
8	116 087	120 706	165 159	179 857
8,5	120 364	125 197	171 209	186 666
9	124 641	129 688	177 259	193 475
9,5	128 918	134 179	183 309	200 284
10	133 195	138 670	189 359	207 093
Additional 0,5 kg	4 354	4 568	6 050	6 962
21	229 072	239 326	322 876	361 476
Additional 0,5 kg	4 503	4 728	6 467	8 173
30	310 126	324 430	439 282	508 590
Additional 0,5 kg	4 615	4 836	6 481	8 479
45	448 286	469 510	633 683	762 961
Additional 0,5 kg	4 605	4 836	6 480	8 479
70,5	683 141	716 146	964 163	1 195 390
Rate per kg (multiply by total shipment weight)				
71-99	9 693	10 159	14 329	17 535
100-299	9 693	10 159	14 329	17 535
300-499	9 693	10 159	14 329	17 535
500-999	9 693	10 159	14 329	17 535
1 000 +	9 693	10 159	14 329	17 535

Shipments must be properly packed. See the packaging guidelines on [fedex.com](https://www.fedex.com). Any shipment with a weight between any of the above weight bands will be charged at the higher weight band rate.

* Availability of services and transit times may vary depending on origin and destination. Terms and conditions apply – visit [fedex.com](https://www.fedex.com) for full details of our services.



Find the zone for your shipment's destination.

Availability of service and transit times may vary depending on origin and destination. For more information, please contact your FedEx Sales Representative or visit fedex.com/ficp.

DESTINATION	Zone	DESTINATION	Zone	DESTINATION	Zone
Algeria	C	Gambia	E	Nigeria	E
Angola	E	Georgia	C	Oman	C
Anguilla	D	Ghana	E	Pakistan	C
Antigua & Barbuda	D	Grenada	D	Palau	E
Argentina	D	Guadeloupe	D	Palestine Authority	C
Armenia	C	Guam	E	Panama	D
Aruba	D	Guatemala	D	Papua New Guinea	E
Australia	G	Guinea	E	Paraguay	D
Azerbaijan	C	Guyana	D	Peru	D
Bahamas	D	Haiti	D	Philippines	B
Bahrain	C	Honduras	D	Puerto Rico	D
Bangladesh	C	Hong Kong SAR, China	F	Qatar	C
Barbados	D	India	C	Reunion Island	E
Belize	D	Indonesia	B	Rwanda	E
Benin	E	Iraq	E	Saipan	E
Bermuda	D	Israel	C	Samoa, West	E
Bhutan	C	Ivory Coast	E	Saudi Arabia	C
Bolivia	D	Jamaica	D	Senegal	E
Bonaire, Saba, St. Eustatius	D	Japan	I	Seychelles	E
Botswana	E	Jordan	C	Singapore	I
Brazil	D	Kazakhstan	E	South Africa	D
Brunei	C	Kenya	E	Sri Lanka	C
Burkina Faso	E	Korea, South	B	St. Kitts & Nevis	D
Burundi	E	Kuwait	C	St. Lucia	D
Cambodia	B	Kyrgyzstan	E	St. Maarten (NL)	D
Cameroon	E	Laos	B	St. Martin (FR)	D
Canada	A	Lebanon	C	St. Vincent	D
Cape Verde	E	Lesotho	E	Suriname	D
Cayman Islands	D	Liberia	E	Taiwan, China	B
Chad	E	Libya	C	Tanzania	E
Chile	D	Macao SAR, China	B	Thailand	B
China	F	Madagascar	E	Togo	E
Colombia	D	Malawi	E	Tonga	E
Congo	E	Malaysia	B	Trinidad & Tobago	D
Congo, Dem. Rep. of	E	Maldives	E	Tunisia	C
Cook Islands	E	Mali	E	Turks & Caicos Islands	D
Costa Rica	D	Marshall Islands	E	Uganda	E
Curacao	D	Martinique	D	United Arab Emirates	C
Djibouti	E	Mauritania	E	Uruguay	D
Dominica	D	Mauritius	E	USA	H
Dominican Republic	D	Mexico	D	Uzbekistan	E
East Timor	B	Micronesia	E	Vanuatu	E
Ecuador	D	Mongolia	E	Vietnam	B
Egypt	C	Montserrat	D	Virgin Islands (GB)	D
El Salvador	D	Morocco	C	Virgin Islands (USA)	D
Eritrea	E	Mozambique	E	Wallis & Futuna	E
Eswatini (Swaziland)	E	Namibia	E	Zambia	E
Ethiopia	E	Nepal	C	Zimbabwe	E
Fiji	E	New Caledonia	E		
French Guiana	D	New Zealand	G		
French Polynesia	E	Nicaragua	D		
Gabon	E	Niger	E		

Find the rate corresponding to your zone and shipment weight.

WEIGHT (KG)	ZONE A/H	ZONE B/I	ZONE C	ZONE D	ZONE E	ZONE F	ZONE G
	HUF	HUF	HUF	HUF	HUF	HUF	HUF
0,5	26 355	35 490	40 394	42 033	42 812	33 586	38 237
1	29 178	39 412	44 439	46 692	48 746	37 402	42 165
1,5	32 001	43 334	48 484	51 351	54 680	41 218	46 093
2	34 824	47 256	52 529	56 010	60 614	45 034	50 021
2,5	37 647	51 178	56 574	60 669	66 548	48 850	53 949
3	40 435	55 100	60 619	65 321	72 482	52 666	57 877
3,5	43 223	59 022	64 664	69 972	78 416	56 482	61 805
4	46 011	62 944	68 709	74 623	84 350	60 298	65 733
4,5	48 799	66 866	72 754	79 274	90 284	64 114	69 661
5	51 587	70 788	76 799	83 925	96 218	67 930	73 589
5,5	54 415	74 741	80 763	88 336	102 098	71 663	77 517
6	57 243	78 694	84 727	92 747	107 978	75 396	81 445
6,5	60 071	82 647	88 691	97 158	113 858	79 129	85 373
7	62 899	86 600	92 655	101 569	119 738	82 862	89 301
7,5	65 727	90 553	96 619	105 980	125 618	86 595	93 229
8	68 555	94 506	100 583	110 391	131 498	90 328	97 157
8,5	71 383	98 459	104 547	114 802	137 378	94 061	101 085
9	74 211	102 412	108 511	119 213	143 258	97 794	105 013
9,5	77 039	106 365	112 475	123 624	149 138	101 527	108 941
10	79 867	110 318	116 439	128 035	155 018	105 260	112 869
Additional 0,5 kg	3 063	3 996	3 964	4 607	5 505	3 521	3 971
21	147 173	198 419	203 782	229 960	276 183	182 707	200 423
Additional 0,5 kg	3 003	4 265	4 099	5 178	5 620	3 502	4 243
30	201 227	275 189	277 564	323 164	377 343	245 743	276 797
Additional 0,5 kg	3 179	4 308	4 357	5 604	5 950	3 592	4 396
32,5	217 122	296 729	299 349	351 184	407 057	263 703	298 777
Rate per kg (multiply by total shipment weight)							
33-68	7 027	9 751	9 863	12 091	13 497	9 345	10 382

Any shipment with a weight between any of the above weight bands will be charged at the higher weight band rate.





FedEx International Economy® (IE)

WEIGHT (KG)	ZONE A/H	ZONE B/I	ZONE C	ZONE D	ZONE E	ZONE F	ZONE G
	HUF	HUF	HUF	HUF	HUF	HUF	HUF
0,5	27 612	37 191	42 328	44 044	44 867	35 191	40 072
1	30 569	41 300	46 581	48 924	51 083	39 187	44 192
1,5	33 526	45 409	50 834	53 804	57 299	43 183	48 312
2	36 483	49 518	55 087	58 684	63 515	47 179	52 432
2,5	39 440	53 627	59 340	63 564	69 731	51 175	56 552
3	42 373	57 736	63 593	68 438	75 947	55 171	60 672
3,5	45 304	61 845	67 846	73 312	82 163	59 167	64 792
4	48 235	65 954	72 099	78 186	88 379	63 163	68 912
4,5	51 166	70 063	76 352	83 060	94 595	67 159	73 032
5	54 097	74 172	80 605	87 934	100 811	71 155	77 152
5,5	57 060	78 314	84 754	92 555	106 971	75 065	81 272
6	60 023	82 456	88 902	97 176	113 131	78 975	85 392
6,5	62 986	86 598	93 050	101 797	119 291	82 885	89 512
7	65 949	90 740	97 198	106 418	125 451	86 795	93 632
7,5	68 912	94 882	101 346	111 039	131 611	90 705	97 752
8	71 875	99 024	105 494	115 660	137 771	94 615	101 872
8,5	74 838	103 166	109 642	120 281	143 931	98 525	105 992
9	77 801	107 308	113 790	124 902	150 091	102 435	110 112
9,5	80 764	111 450	117 938	129 523	156 251	106 345	114 232
10	83 727	115 592	122 086	134 144	162 411	110 255	118 352
Additional 0,5 kg	3 205	4 181	4 148	4 828	5 764	3 692	4 150
21	154 181	207 881	213 490	240 907	289 346	191 405	209 952
Additional 0,5 kg	3 149	4 488	4 296	5 435	5 891	3 678	4 448
30	210 863	288 665	290 818	338 737	395 384	257 609	290 016
Additional 0,5 kg	3 328	4 503	4 570	5 870	6 223	3 760	4 604
45	310 703	423 755	427 715	514 663	582 074	370 409	428 136
Additional 0,5 kg	3 328	4 503	4 563	5 864	6 223	3 760	4 604
70,5	480 431	653 408	660 428	813 727	899 447	562 169	662 940
Rate per kg (multiply by total shipment weight)							
71-99	7 052	9 848	9 963	12 213	13 634	9 437	10 488
100-299	7 052	9 848	9 963	12 213	13 634	9 437	10 488
300-499	7 052	9 848	9 963	12 213	13 634	9 437	10 488
500-999	7 052	9 848	9 963	12 213	13 634	9 437	10 488
1 000 +	7 052	9 848	9 963	12 213	13 634	9 437	10 488

FedEx International Economy® Freight (IEF)

WEIGHT (KG)	ZONE A/H	ZONE B/I	ZONE C	ZONE D	ZONE E	ZONE F	ZONE G
	HUF	HUF	HUF	HUF	HUF	HUF	HUF
Rate per kg (multiply by total shipment weight)							
68-99	7 301	10 295	10 433	12 723	14 170	9 811	10 900
100-299	7 301	10 295	10 433	12 723	14 170	9 811	10 900
300-499	7 301	10 295	10 433	12 723	14 170	9 811	10 900
500-999	7 301	10 295	10 433	12 723	14 170	9 811	10 900
1 000 +	7 301	10 295	10 433	12 723	14 170	9 811	10 900

Shipments must be properly palletized and shrink-wrapped. See the packaging guidelines on [fedex.com](https://www.fedex.com). Any shipment with a weight between any of the above weight bands will be charged at the higher weight band rate. FedEx International Economy and FedEx International Economy Freight rates may be different if FedEx® Regional Economy and FedEx® Regional Economy Freight are available to you.