



Whether your shipments are heavy or lightweight, urgent or less time sensitive, FedEx has the solution for you. Benefit from competitive prices for a highly reliable service and get your shipments to their destination on time.

How to calculate the charges that apply to your shipment

- Find the zone that your destination/origin falls within in the relevant Zone Tables.
- Choose which service you wish to use.
- Determine the total weight of your shipment to find the transportation rate in the appropriate column.
- Determine whether any fuel surcharge or other surcharges apply to your shipment.

Rate Information

The transportation rates are effective from 5 January 2026. The transportation rates and services offered by FedEx may be amended, modified or discontinued by FedEx at any time with or without notice. They may also vary depending upon the point of or time of collection or delivery, shipment size or weight or commodity type.

Terms and Conditions of Carriage

All shipments are subject to the Terms and Conditions of Carriage (“Conditions of Carriage”) published and maintained at the applicable [fedex.com](https://www.fedex.com) site. For shipments originating in Germany, you can find the relevant Conditions of Carriage here: [fedex.com/de_english/services/terms](https://www.fedex.com/de_english/services/terms). The information on your rates and shipments set out in this document is in part extracted from the Conditions of Carriage and provided for reference purposes only. In the event of any conflict, the online Conditions of Carriage prevail.

Duties, Taxes and Additional Charges

Duties and taxes may apply to certain shipments. Such duties and taxes will be billed to the recipient where allowed, unless otherwise requested by the sender. In the event FedEx disburses duties, taxes or other fees to a customs agency to complete clearance of certain items through customs, the payer will be assessed a clearance service fee, which may vary depending on the destination country. For more information, see [fedex.com/de_english/ancillaryservices](https://www.fedex.com/de_english/ancillaryservices).

Additional charges may apply to certain shipments including fuel and other surcharges, ancillary charges, Declared Value for Carriage charges, return charges, special handling fees, import and export charges, and other costs reasonably incurred by FedEx relating to the transport of a shipment. For more information see [fedex.com/de_english/ratesinformation](https://www.fedex.com/de_english/ratesinformation). All rates, surcharges and other applicable charges quoted exclude any value added tax (VAT) that may be applicable and which would be added to the charges at the rate in force at the time.

Exchange Fee

An additional exchange fee may apply for the conversion of rates in currencies other than the currency in which the payer’s account is billed.



Weight and Dimensions

Dimensional weight is the amount of space a package occupies in relation to its actual weight. For each shipment, FedEx charges based on the dimensional weight or the actual weight, whichever is greater. FedEx uses the following volumetric calculation to determine the dimensional weight in kg per package: length x height x width in cm/5 000.⁽¹⁾ Dimensional weight does not apply to shipments in FedEx packaging, however, in case FedEx® Pak in Europe exceeds 0.0154 m³, dimensional weight may apply. FedEx® Box packaging is subject to a minimum weight charge.

When measuring shipments, any fraction of a centimetre or kilogram will be rounded up to the next whole unit.

The maximum dimensions of packages are defined by the features of service. Please refer to [fedex.com](https://www.fedex.com) for the maximum dimensions.

Any package exceeding these standard measurements is automatically considered as FedEx International Priority® Freight, FedEx International Economy® Freight, FedEx® Regional Economy Freight, FedEx® Priority Express Freight or FedEx® Priority Freight, and billed accordingly.

A minimum billable weight of 68 kg applies to FedEx International Priority Freight, FedEx International Economy Freight, FedEx Regional Economy Freight, FedEx Priority Express Freight and FedEx Priority Freight shipments.

A minimum billable weight applies to shipments packaged in FedEx boxes and tubes, except for FedEx® 10kg Box and FedEx® 25kg Box.⁽²⁾ The values are defined as follows:

FedEx Box (all sizes)	1 kg
FedEx® Tube	4 kg

A flat rate applies up to 10 kg and 25 kg for FedEx 10kg Box and FedEx 25kg Box respectively. Above this weight an increment for each additional kilogram is added.

Limited Liability

The liability of FedEx for loss, damage, delay or any other claim in connection with a shipment will be, in most cases, limited by the applicable international conventions or national transport laws. In some cases, liability may be excluded altogether, and subject to compliance with time limits and other requirements set out in the applicable Conditions of Carriage.

For full details of the liability of FedEx please read the applicable Conditions of Carriage carefully. If liability is accepted, the limit may vary depending upon the service used.

Maximum Liability: Declared Value for Carriage

The sender may elect to pay an additional charge to specify a Declared Value for Carriage on the Waybill, above the standard limits of liability. FedEx does not provide a cargo all-risks insurance.

A fee will be assessed for each additional 100 US\$ (or part thereof) of liability that FedEx accepts above the standard limits of liability. A more detailed quote can be gained when booking a shipment. The Declared Value for Carriage is limited to a maximum amount and may vary by location.

For more information including latest amounts in local currency, please see details in the Value Added Services and Surcharges document.

For FedEx® International Connect Plus, some details in the Maximum Liability section do not apply to this service including Declared Value for Carriage for FedEx Envelope or FedEx Pak.

(1) For FedEx® Regional Economy and FedEx Regional Economy Freight, DIM divisor is 4,000. FedEx Regional Economy and FedEx Regional Economy Freight are our intra-Europe economy services and are available to selected customers only. For further information, please contact your local Sales Representative.

(2) FedEx boxes and tubes as well as FedEx 10kg Box and FedEx 25kg Box are not available for shipping with our domestic services. For further information, please contact your local Sales Representative.

FedEx offers a range of solutions to suit your timing and budget. Choose one of our express services with different options of delivery time during the day for your import shipments. Or select an economy service and choose a suitable delivery date, while saving on your costs.

EUROPE

URGENT*

- IPE** ▶ FedEx International Priority® Express
- IP** ▶ FedEx International Priority®
- IPF** ▶ FedEx International Priority® Freight

LESS URGENT*

- IE** ▶ FedEx International Economy®
- IEF** ▶ FedEx International Economy® Freight
- RE** ▶ FedEx® Regional Economy
- REF** ▶ FedEx® Regional Economy Freight

ORIGIN	ZONE	IPE	IP	IPF	IE	IEF	RE	REF
Albania	V	✓	✓	✓	✓	✓	-	-
Austria (EU)	S	✓	✓	✓	-	-	✓	✓
Belgium (EU)	R	✓	✓	✓	-	-	✓	✓
Bosnia-Herzegovina	V	✓	✓	✓	✓	✓	-	-
Bulgaria (EU)	U	✓	✓	✓	-	-	✓	✓
Croatia (EU)	U	✓	✓	✓	-	-	✓	✓
Cyprus (EU)	V	✓	✓	✓	✓	✓	-	-
Czech Republic (EU)	T	✓	✓	✓	-	-	✓	✓
Denmark (EU)	S	✓	✓	✓	-	-	✓	✓
Estonia (EU)	U	✓	✓	✓	-	-	✓	✓
Finland (EU)	U	✓	✓	✓	-	-	✓	✓
France (EU)	S	✓	✓	✓	-	-	✓	✓
Gibraltar	T	✓	✓	-	-	-	-	-
Greece (EU)	U	✓	✓	✓	-	-	✓	✓
Hungary (EU)	U	✓	✓	✓	-	-	✓	✓
Iceland	V	✓	✓	✓	✓	✓	-	-
Ireland (EU)	U	✓	✓	✓	-	-	✓	✓
Italy (EU)	W	✓	✓	✓	-	-	✓	✓
Latvia (EU)	U	✓	✓	✓	-	-	✓	✓
Liechtenstein	U	✓	✓	-	✓	-	-	-
Lithuania (EU)	U	✓	✓	✓	-	-	✓	✓
Luxembourg (EU)	R	✓	✓	✓	-	-	✓	✓
Malta (EU)	V	✓	✓	✓	✓	✓	-	-
Moldova	V	✓	✓	✓	✓	✓	-	-
Monaco	S	✓	✓	✓	-	-	-	-
Montenegro	V	✓	✓	✓	✓	✓	-	-

ORIGIN	ZONE	IPE	IP	IPF	IE	IEF	RE	REF
Netherlands (EU)	R	✓	✓	✓	-	-	✓	✓
North Macedonia	V	✓	✓	✓	✓	✓	-	-
Norway	U	✓	✓	✓	-	-	✓	✓
Poland (EU)	X	✓	✓	✓	-	-	✓	✓
Portugal (EU)	U	✓	✓	✓	-	-	✓	✓
Romania (EU)	U	✓	✓	✓	-	-	✓	✓
San Marino	T	✓	✓	✓	✓	✓	-	-
Serbia	V	V	V	V	-	-	U	U
Slovak Republic (EU)	U	✓	✓	✓	-	-	✓	✓
Slovenia (EU)	U	✓	✓	✓	-	-	✓	✓
Spain (EU)	T	✓	✓	✓	-	-	✓	✓
Sweden (EU)	U	✓	✓	✓	-	-	✓	✓
Switzerland	U	✓	✓	✓	-	-	✓	✓
Turkey	V	V	V	V	-	-	U	U
Ukraine	V	-	✓	-	-	-	-	-
United Kingdom	Y	✓	✓	✓	-	-	✓	✓
Vatican City	T	✓	✓	✓	✓	✓	-	-

✓ Service available - Service not available (EU) Part of the European Union

The service availability described in this document might vary by postal code and throughout the year.

* For FedEx International First® and FedEx® International Connect Plus zoning information, please refer to the dedicated FIF and FICP documents.



Benefit from our express delivery by mid-day*

FedEx International Priority® Express (IPE)

WEIGHT (kg)	ZONE R	ZONE S	ZONE T/W/X	ZONE U	ZONE V	ZONE Y
	€	€	€	€	€	€

Rates when using FedEx® Envelope/FedEx® Pak (0.5 – 2.5 kg)

FedEx Envelope						
0.5	69.00	72.68	75.22	80.96	98.10	86.26
FedEx Pak						
0.5	92.37	100.09	107.36	109.48	139.05	121.00
1	99.20	108.59	117.54	122.45	155.27	132.30
1.5	106.03	117.09	127.72	135.42	171.49	143.60
2	112.86	125.59	137.90	148.39	187.71	154.90
2.5	119.69	134.09	148.08	161.36	203.93	166.20

Rates when using FedEx® 10kg and 25kg Box

FedEx 10kg Box						
≤ 10	153.71	175.94	210.55	242.24	331.57	233.10
Additional kg	9.62	12.08	12.52	14.76	17.90	13.66
FedEx 25kg Box						
≤ 25	238.31	293.22	351.91	422.08	547.29	387.54
Additional kg	9.62	12.08	11.40	13.86	17.90	12.52

Rates when using other packaging material

0.5	92.49	100.65	107.36	110.72	171.33	122.23
1	99.54	109.26	117.98	123.92	186.87	133.53
1.5	106.59	117.87	128.60	137.12	202.41	144.83
2	113.64	126.48	139.22	150.32	217.95	156.13
2.5	120.69	135.09	149.84	163.52	233.49	167.43
3	125.95	141.02	158.67	174.70	247.69	176.94
3.5	131.21	146.95	167.50	185.88	261.89	186.45
4	136.47	152.88	176.33	197.06	276.09	195.96
4.5	141.73	158.81	185.16	208.24	290.29	205.47
5	146.99	164.74	193.99	219.42	304.49	214.98
5.5	150.35	170.34	202.27	230.83	318.03	224.04
6	153.71	175.94	210.55	242.24	331.57	233.10
6.5	157.07	181.54	218.83	253.65	345.11	242.16
7	160.43	187.14	227.11	265.06	358.65	251.22
7.5	163.79	192.74	235.39	276.47	372.19	260.28
8	167.15	198.34	243.67	287.88	385.73	269.34
8.5	170.51	203.94	251.95	299.29	399.27	278.40
9	173.87	209.54	260.23	310.70	412.81	287.46
9.5	177.23	215.14	268.51	322.11	426.35	296.52
10	180.59	220.74	276.79	333.52	439.89	305.58
Additional 0.5 kg	4.81	6.04	6.26	7.38	8.95	6.83
21	286.41	353.62	413.95	495.43	636.79	455.27
Additional 0.5 kg	4.81	6.04	5.70	6.93	8.95	6.26
30	372.99	462.34	516.55	620.17	797.89	567.95
Additional 0.5 kg	5.04	6.49	7.38	8.95	8.95	8.38
45	524.19	657.04	737.95	888.67	1,066.39	819.35
Additional 0.5 kg	5.04	6.49	7.38	8.95	8.95	8.38
70.5	781.23	968.44	1,114.33	1,345.12	1,522.84	1,214.81
Rate per kg (multiply by total shipment weight)						
71 – 99	11.30	13.64	16.00	19.24	22.03	17.11
100 – 299	10.62	12.64	14.87	18.68	20.25	16.55
300 – 499	10.62	12.64	14.65	18.68	19.79	16.22
500 – 999	10.62	12.53	14.65	18.68	19.35	16.22
1,000 +	10.62	12.53	14.65	18.68	19.35	16.22

Any shipment with a weight between any of the above weight bands will be charged at the higher weight band rate.

*Availability of services and transit times may vary depending on origin and destination. Terms and conditions apply – visit [fedex.com](https://www.fedex.com) for full details of our services.



FedEx International Priority® (IP)

WEIGHT (kg)	ZONE R	ZONE S	ZONE T/W/X	ZONE U	ZONE V	ZONE Y
	€	€	€	€	€	€

Rates when using FedEx® Envelope/FedEx® Pak (0.5 – 2.5 kg)

FedEx Envelope						
0.5	65.75	69.24	71.66	77.06	93.39	82.12
FedEx Pak						
0.5	88.01	95.28	102.22	104.23	132.37	115.19
1	94.50	103.34	111.95	116.54	147.78	125.93
1.5	100.99	111.40	121.68	128.85	163.19	136.67
2	107.48	119.46	131.41	141.16	178.60	147.41
2.5	113.97	127.52	141.14	153.47	194.01	158.15

Rates when using FedEx® 10kg and 25kg Box

FedEx 10kg Box						
≤ 10	146.64	167.19	200.06	230.36	315.66	221.90
Additional kg	9.18	11.40	11.86	14.10	17.00	12.98
FedEx 25kg Box						
≤ 25	227.64	278.47	333.86	401.68	520.54	368.66
Additional kg	9.18	11.40	10.96	13.18	17.00	11.86

Rates when using other packaging material

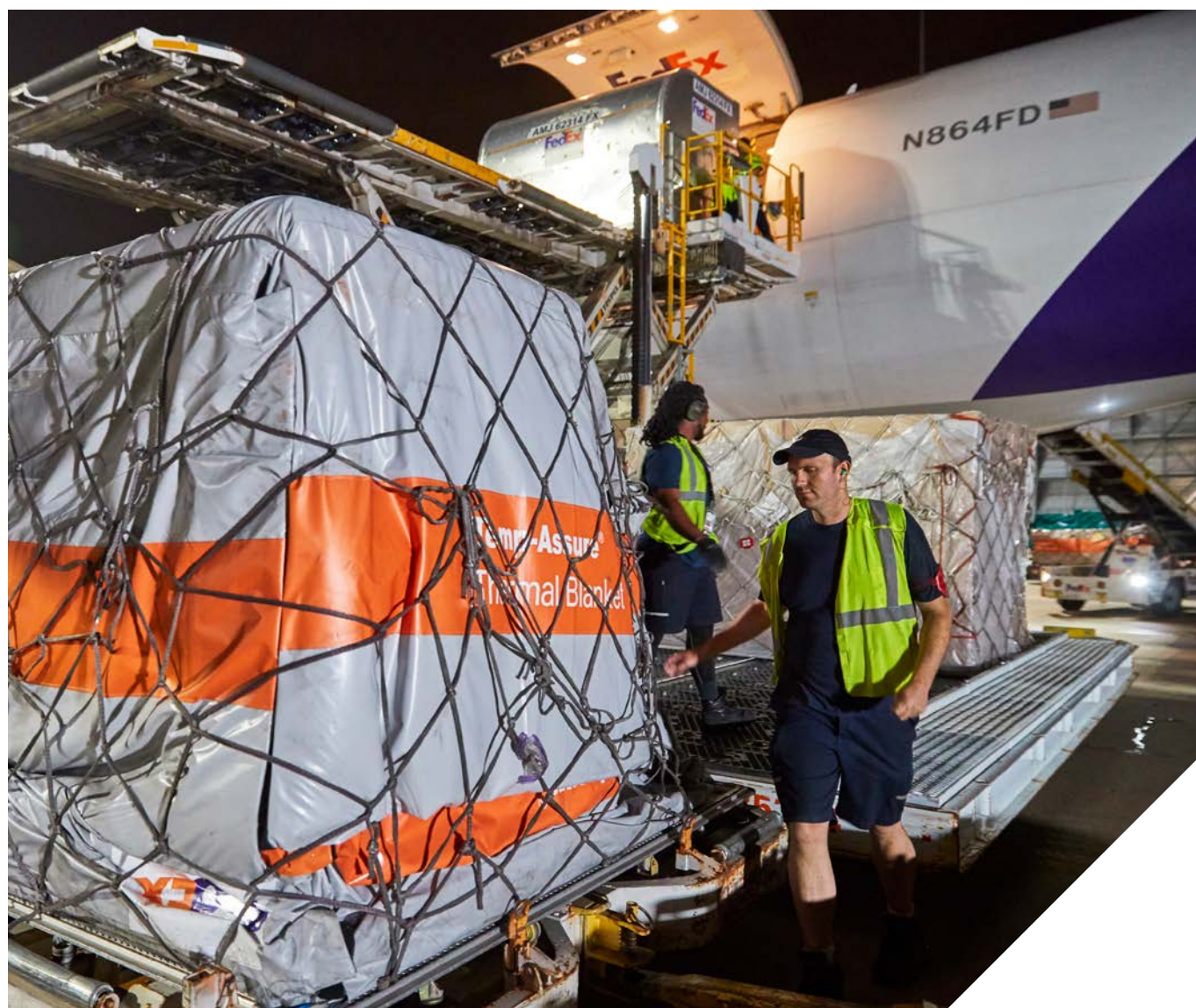
0.5	88.12	95.83	102.22	105.46	163.16	116.42
1	94.83	103.99	112.29	117.99	177.93	127.16
1.5	101.54	112.15	122.36	130.52	192.70	137.90
2	108.25	120.31	132.43	143.05	207.47	148.64
2.5	114.96	128.47	142.50	155.58	222.24	159.38
3	120.00	134.07	150.88	166.20	235.78	168.44
3.5	125.04	139.67	159.26	176.82	249.32	177.50
4	130.08	145.27	167.64	187.44	262.86	186.56
4.5	135.12	150.87	176.02	198.06	276.40	195.62
5	140.16	156.47	184.40	208.68	289.94	204.68
5.5	143.40	161.83	192.23	219.52	302.80	213.29
6	146.64	167.19	200.06	230.36	315.66	221.90
6.5	149.88	172.55	207.89	241.20	328.52	230.51
7	153.12	177.91	215.72	252.04	341.38	239.12
7.5	156.36	183.27	223.55	262.88	354.24	247.73
8	159.60	188.63	231.38	273.72	367.10	256.34
8.5	162.84	193.99	239.21	284.56	379.96	264.95
9	166.08	199.35	247.04	295.40	392.82	273.56
9.5	169.32	204.71	254.87	306.24	405.68	282.17
10	172.56	210.07	262.70	317.08	418.54	290.78
Additional 0.5 kg	4.59	5.70	5.93	7.05	8.50	6.49
21	273.54	335.47	392.71	471.72	605.54	433.00
Additional 0.5 kg	4.59	5.70	5.48	6.59	8.50	5.93
30	356.16	438.07	491.35	590.34	758.54	539.74
Additional 0.5 kg	4.81	6.15	7.05	8.50	8.50	7.94
45	500.46	622.57	702.85	845.34	1,013.54	777.94
Additional 0.5 kg	4.81	6.15	7.05	8.50	8.50	7.94
70.5	745.77	920.87	1,062.40	1,278.84	1,447.04	1,158.72
Rate per kg (multiply by total shipment weight)						
71 – 99	10.74	12.97	15.21	18.34	21.02	16.32
100 – 299	10.07	12.07	14.20	17.78	19.24	15.77
300 – 499	10.07	12.07	13.98	17.78	18.90	15.43
500 – 999	10.07	11.97	13.98	17.78	18.45	15.43
1,000 +	10.07	11.97	13.98	17.78	18.45	15.43

FedEx International Priority® Freight (IPF)

WEIGHT (kg)	ZONE R	ZONE S	ZONE T/W/X	ZONE U	ZONE V	ZONE Y
	€	€	€	€	€	€
68	783.36	912.56	1,088.00	1,338.24	1,544.28	1,209.04
68.5	794.88	925.98	1,104.00	1,357.92	1,566.99	1,226.82
69	794.88	925.98	1,104.00	1,357.92	1,566.99	1,226.82
69.5	806.40	939.40	1,120.00	1,377.60	1,589.70	1,244.60
70	806.40	939.40	1,120.00	1,377.60	1,589.70	1,244.60
70.5	817.92	944.30	1,136.00	1,397.28	1,596.08	1,262.38
Rate per kg (multiply by total shipment weight)						
71 – 99	11.52	13.30	16.00	19.68	22.48	17.78
100 – 299	10.84	12.53	15.32	18.23	20.47	16.78
300 – 499	10.84	12.53	14.77	18.23	20.35	16.22
500 – 999	10.84	12.53	14.77	18.23	19.91	16.22
1,000 +	10.84	12.53	14.77	18.23	19.91	16.22

Shipments must be properly palletized and shrink-wrapped. See the packaging guidelines on [fedex.com](https://www.fedex.com). Any shipment with a weight between any of the above weight bands will be charged at the higher weight band rate.

* Availability of services and transit times may vary depending on origin and destination. Terms and conditions apply – visit [fedex.com](https://www.fedex.com) for full details of our services.





FedEx International First® (FIF)

ORIGIN	ZONE	ORIGIN	ZONE	ORIGIN	ZONE
Austria (EU)	S	Hungary (EU)	U	Romania (EU)	U
Belgium (EU)	R	Ireland (EU)	U	Slovak Republic (EU)	U
Bulgaria (EU)	U	Italy (EU)	W	Slovenia (EU)	U
Cyprus (EU)	V	Latvia (EU)	U	Spain (EU)	T
Czech Republic (EU)	T	Lithuania (EU)	U	Sweden (EU)	U
Denmark (EU)	S	Luxembourg (EU)	R	Switzerland	U
Estonia (EU)	U	Netherlands (EU)	R	Turkey	V
Finland (EU)	U	Norway	U	United Kingdom	Y
France (EU)	S	Poland (EU)	X		
Greece (EU)	U	Portugal (EU)	U		

(EU) = Part of the European Union.

WEIGHT (kg)	ZONE R	ZONE S	ZONE T/W/X	ZONE U	ZONE V	ZONE Y
	€	€	€	€	€	€

Rates when using FedEx® Envelope/FedEx® Pak (0.5 – 2.5 kg)

FedEx Envelope						
0.5	107.47	109.15	111.71	117.09	138.45	122.23
FedEx Pak						
0.5	134.08	145.16	155.89	158.58	196.15	175.58
1	144.03	157.35	170.76	177.36	218.96	191.80
1.5	153.98	169.54	185.63	196.14	241.77	208.02
2	163.93	181.73	200.50	214.92	264.58	224.24
2.5	173.88	193.92	215.37	233.70	287.39	240.46

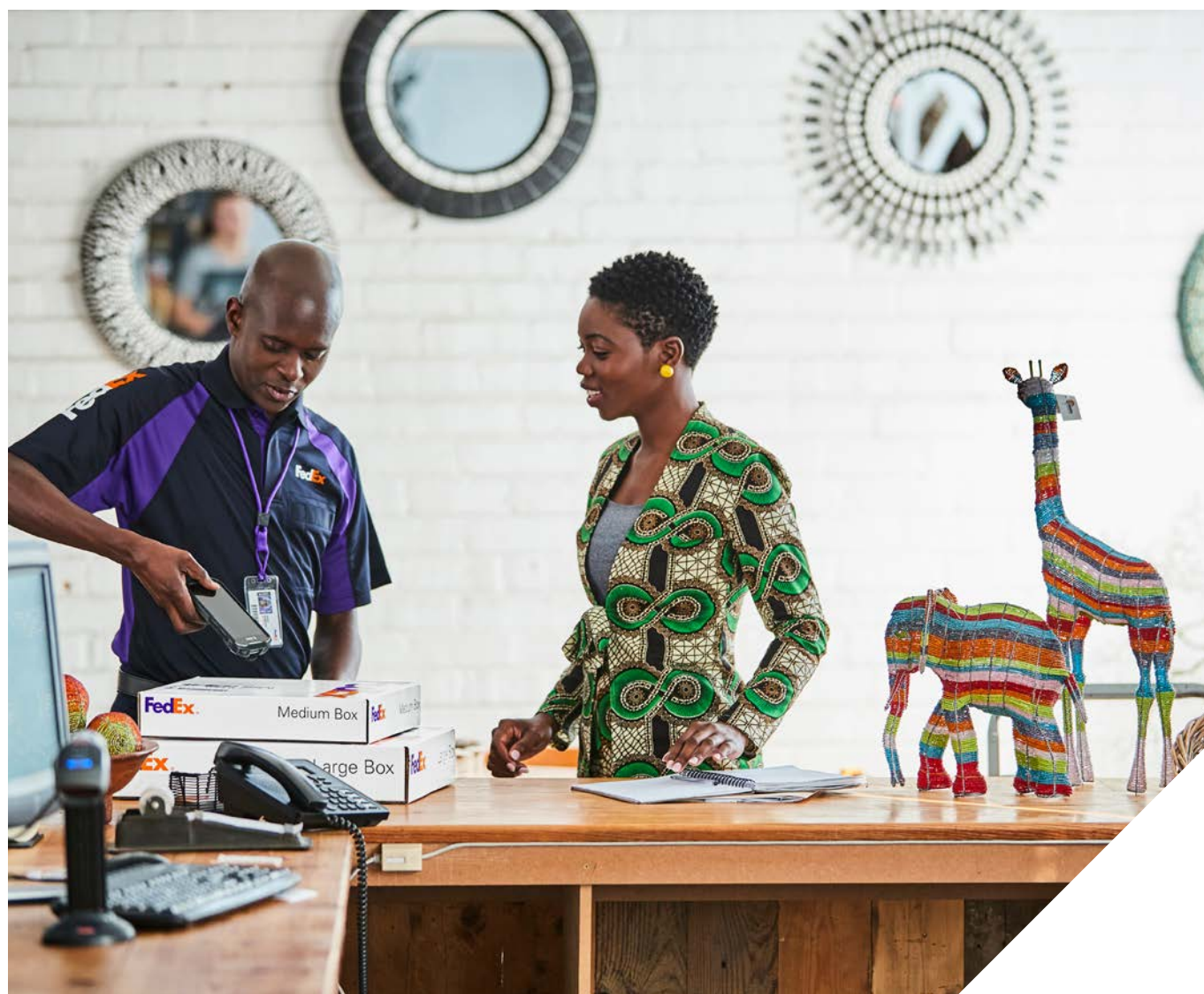
Rates when using other packaging material

0.5	134.20	145.94	155.89	160.59	248.38	176.81
1	144.49	158.35	171.21	179.71	270.86	193.36
1.5	154.78	170.76	186.53	198.83	293.34	209.91
2	165.07	183.17	201.85	217.95	315.82	226.46
2.5	175.36	195.58	217.17	237.07	338.30	243.01
3	183.08	204.08	230.03	252.95	358.99	256.65
3.5	190.80	212.58	242.89	268.83	379.68	270.29
4	198.52	221.08	255.75	284.71	400.37	283.93
4.5	206.24	229.58	268.61	300.59	421.06	297.57
5	213.96	238.08	281.47	316.47	441.75	311.21
5.5	218.88	246.24	293.32	333.25	461.10	324.63
6	223.80	254.40	305.17	350.03	480.45	338.05
6.5	228.72	262.56	317.02	366.81	499.80	351.47
7	233.64	270.72	328.87	383.59	519.15	364.89
7.5	238.56	278.88	340.72	400.37	538.50	378.31
8	243.48	287.04	352.57	417.15	557.85	391.73
8.5	248.40	295.20	364.42	433.93	577.20	405.15
9	253.32	303.36	376.27	450.71	596.55	418.57
9.5	258.24	311.52	388.12	467.49	615.90	431.99

WEIGHT (kg)	ZONE R	ZONE S	ZONE T/W/X	ZONE U	ZONE V	ZONE Y
	€	€	€	€	€	€
10	263.16	319.68	399.97	484.27	635.25	445.41
Additional 0.5 kg	6.93	8.72	8.83	10.84	13.20	9.73
21	415.62	511.52	594.00	721.86	925.65	659.03
Additional 0.5 kg	6.93	8.72	8.50	9.95	13.20	9.29
30	540.36	668.48	747.00	900.96	1,163.25	826.25
Additional 0.5 kg	7.49	9.29	10.84	13.20	13.20	12.07
45	765.06	947.18	1,072.32	1,296.96	1,559.25	1,188.48
Additional 0.5 kg	7.49	9.29	10.84	13.20	13.20	12.07
70.5	1,147.05	1,420.97	1,625.16	1,970.16	2,232.45	1,804.05
Rate per kg (multiply by total shipment weight)						
71 – 99	16.89	20.69	23.60	28.63	32.32	26.17
100 – 299	16.89	20.69	23.60	28.63	32.32	26.17
300 – 499	16.89	20.69	23.60	28.63	32.32	26.17
500 – 999	16.89	20.69	23.60	28.63	32.32	26.17
1,000 +	16.89	20.69	23.60	28.63	32.32	26.17

Shipments must be properly packed. See the packaging guidelines on [fedex.com](https://www.fedex.com). Any shipment with a weight between any of the above weight bands will be charged at the higher weight band rate.

* Availability of services and transit times may vary depending on origin and destination. Terms and conditions apply – visit [fedex.com](https://www.fedex.com) for full details of our services.





Find the zone for your shipment's origin.

Availability of service and transit times may vary depending on origin and destination. For more information, please contact your FedEx Sales Representative or visit fedex.com/ficp.

ORIGIN	Zone	ORIGIN	Zone	ORIGIN	Zone
Albania	V	Greenland*	E	Poland (EU)	X
Andorra	T	Hungary (EU)	U	Portugal (EU)	U
Austria (EU)	S	Iceland	V	Romania (EU)	U
Belgium (EU)	R	Ireland (EU)	U	San Marino	T
Bosnia-Herzegovina	V	Italy (EU)	W	Serbia	V
Bulgaria (EU)	U	Latvia (EU)	U	Slovak Republic (EU)	U
Croatia (EU)	U	Liechtenstein	U	Slovenia (EU)	U
Cyprus (EU)	V	Lithuania (EU)	U	Spain (EU)	T
Czech Republic (EU)	T	Luxembourg (EU)	R	Sweden (EU)	U
Denmark (EU)	S	Malta (EU)	V	Switzerland	U
Estonia (EU)	U	Moldova	V	Turkey	V
Faroe Islands*	E	Monaco	S	United Kingdom	Y
Finland (EU)	U	Montenegro	V	Vatican City	T
France (EU)	S	Netherlands (EU)	R		
Gibraltar	T	North Macedonia	V		
Greece (EU)	U	Norway	U		

(EU) = Part of the European Union. * For Faroe Islands and Greenland, please refer to the World Rates.

Find the flat rate corresponding to your zone and shipment weight.

WEIGHT (kg)	ZONE R	ZONE S	ZONE T/W/X	ZONE U	ZONE V	ZONE Y
	€	€	€	€	€	€
0.5 – 5	71.69	83.20	98.86	105.46	163.16	116.42
5.5 – 10	99.30	118.76	145.82	169.87	274.43	170.99
10.5 – 15	124.02	145.60	178.14	207.34	324.65	208.12
15.5 – 20	149.51	175.91	210.46	244.57	368.25	245.46
20.5 – 25	174.68	206.11	242.68	281.70	411.98	282.70
25.5 – 32.5	205.10	242.22	281.59	326.43	464.10	327.43
Rate per kg (multiply by total shipment weight)						
33 – 68	7.49	8.72	10.07	11.74	16.22	11.85

Any shipment with a weight between any of the above weight bands will be charged at the higher weight band rate.



FedEx® Regional Economy (RE)

WEIGHT (kg)	ZONE R	ZONE S	ZONE T/W/X	ZONE U	ZONE Y
	€	€	€	€	€
0.5	63.52	69.67	76.38	89.80	82.42
1	63.52	69.67	76.38	89.80	82.42
1.5	69.89	79.51	92.38	107.13	98.42
2	69.89	79.51	92.38	107.13	98.42
2.5	75.03	88.68	103.90	120.99	109.94
3	75.03	88.68	103.90	120.99	109.94
3.5	80.17	97.85	115.42	134.85	121.46
4	80.17	97.85	115.42	134.85	121.46
4.5	85.31	107.02	126.94	148.71	132.98
5	85.31	107.02	126.94	148.71	132.98
5.5	90.01	111.27	133.43	156.20	139.47
6	90.01	111.27	133.43	156.20	139.47
6.5	94.71	115.52	139.92	163.69	145.96
7	94.71	115.52	139.92	163.69	145.96
7.5	99.41	119.77	146.41	171.18	152.45
8	99.41	119.77	146.41	171.18	152.45
8.5	104.11	124.02	152.90	178.67	158.94
9	104.11	124.02	152.90	178.67	158.94
9.5	108.81	128.27	159.39	186.16	165.43
10	108.81	128.27	159.39	186.16	165.43
Additional 1kg	5.26	6.37	6.59	7.49	6.59
30	230.23	273.01	309.43	356.98	315.47
Additional 5kg	21.48	23.71	24.83	28.51	24.83
50	319.83	371.20	414.23	479.75	420.27
Additional 5kg	25.16	27.06	30.31	37.24	30.31
70	399.90	457.86	516.23	604.22	522.72
Rate per kg (multiply by total shipment weight)					
71 +	5.70	6.49	7.38	8.61	7.49

FedEx® Regional Economy Freight (REF)

WEIGHT (kg)	ZONE R	ZONE S	ZONE T/W/X	ZONE U	ZONE Y
	€	€	€	€	€
Rate per kg (multiply by total shipment weight)					
68 – 99	5.70	6.49	7.38	8.61	7.49
100 – 299	5.70	6.49	7.38	8.61	7.49
300 – 499	5.70	6.49	7.38	8.61	7.49
500 – 999	5.70	6.49	7.38	8.61	7.49
1,000 +	5.70	6.49	7.38	8.61	7.49

FedEx Regional Economy Freight shipments must be properly palletized and shrink-wrapped. See the packaging guidelines on [fedex.com](https://www.fedex.com). Any shipment with a weight between any of the above weight bands will be charged at the higher weight band rate. FedEx Regional Economy and FedEx Regional Economy Freight are our intra-Europe economy services and are available to selected customers only. For further information, please contact your local Sales Representative.



Save on your less urgent shipments with our economy services

FedEx International Economy® (IE)

WEIGHT (kg)	ZONE S €	ZONE T €	ZONE U €	ZONE V €
0.5	70.00	76.61	89.98	147.62
1	75.26	85.62	99.83	161.48
1.5	80.52	94.63	109.68	175.34
2	85.78	103.64	119.53	189.20
2.5	91.04	112.65	129.38	203.06
3	96.30	118.66	136.94	214.80
3.5	101.56	124.67	144.50	226.54
4	106.82	130.68	152.06	238.28
4.5	112.08	136.69	159.62	250.02
5	117.34	142.70	167.18	261.76
5.5	121.56	149.97	175.40	274.42
6	121.56	149.97	175.40	274.42
6.5	125.81	157.25	183.63	287.06
7	125.81	157.25	183.63	287.06
7.5	130.06	164.53	191.88	299.69
8	130.06	164.53	191.88	299.69
8.5	134.31	171.80	200.12	312.33
9	134.31	171.80	200.12	312.33
9.5	138.55	179.09	208.36	324.96
10	138.55	179.09	208.36	324.96
Additional 1 kg	6.83	7.28	8.36	9.63
30	274.99	324.67	375.51	517.31
Additional 5 kg	25.05	27.73	31.48	34.90
50	375.19	435.59	501.43	656.88
Additional 5 kg	27.28	33.85	40.98	35.45
70.5	536.79	634.55	730.39	859.96
Rate per kg (multiply by total shipment weight)				
71 – 99	7.60	9.01	10.42	12.19
100 – 299	6.49	7.62	8.82	10.74
300 – 499	6.49	7.62	8.82	10.74
500 – 999	6.49	7.62	8.82	10.07
1,000 +	6.49	7.62	8.82	10.07

FedEx International Economy® Freight (IEF)

WEIGHT (kg)	ZONE S €	ZONE T €	ZONE U €	ZONE V €
Rate per kg (multiply by total shipment weight)				
68 – 99	8.28	9.48	11.09	13.20
100 – 299	6.49	7.62	8.89	11.30
300 – 499	6.49	7.62	8.89	11.30
500 – 999	6.49	7.62	8.89	10.84
1,000 +	6.49	7.62	8.89	10.84

Shipments must be properly palletized and shrink-wrapped. See the packaging guidelines on [fedex.com](https://www.fedex.com). Any shipment with a weight between any of the above weight bands will be charged at the higher weight band rate. FedEx International Economy and FedEx International Economy Freight rates may be different if FedEx® Regional Economy and FedEx® Regional Economy Freight are available to you.

FedEx offers a range of solutions to suit your timing and budget. Choose one of our express services with different options of delivery time during the day for your import shipments. Or select an economy service and choose a suitable delivery date, while saving on your costs.

WORLD

URGENT*

- IPE** ▶ FedEx International Priority® Express
- IP** ▶ FedEx International Priority®
- IPF** ▶ FedEx International Priority® Freight

LESS URGENT*

- IE** ▶ FedEx International Economy®
- IEF** ▶ FedEx International Economy® Freight

ORIGIN	ZONE	IPE	IP	IPF	IE	IEF
Algeria	C	✓	✓	✓	-	-
Angola	E	✓	✓	✓	-	-
Anguilla	D	✓	✓	-	✓	-
Antigua & Barbuda	D	✓	✓	✓	✓	✓
Argentina	D	✓	✓	✓	✓	✓
Armenia	C	✓	✓	-	✓	-
Aruba	D	✓	✓	-	✓	-
Australia	G	✓	✓	✓	✓	✓
Azerbaijan	D	✓	✓	-	✓	-
Bahamas	C	✓	✓	✓	✓	✓
Bahrain	C	✓	✓	✓	✓	✓
Bangladesh	C	✓	✓	✓	✓	✓
Barbados	D	✓	✓	✓	✓	✓
Belize	D	✓	✓	-	✓	-
Benin	E	✓	✓	-	-	-
Bermuda	D	✓	✓	✓	✓	✓
Bhutan	C	✓	✓	-	-	-
Bolivia	D	✓	✓	-	✓	-
Bonaire, Saba, St. Eustatius	E	✓	✓	-	✓	-
Botswana	E	✓	✓	✓	✓	✓
Brazil	D	✓	✓	✓	✓	✓
Brunei	C	✓	✓	✓	-	✓
Burkina Faso	E	✓	✓	-	-	-
Burundi	E	✓	✓	✓	-	-
Cambodia	B	✓	✓	✓	✓	✓
Cameroon	E	✓	✓	-	-	-
Canada	A	✓	✓	✓	✓	✓
Cape Verde	E	✓	✓	-	-	-
Cayman Islands	D	✓	✓	✓	✓	✓
Chad	E	✓	✓	-	-	-
Chile	D	✓	✓	✓	✓	✓
China	F	✓	✓	✓	✓	✓
Colombia	D	✓	✓	✓	✓	✓
Congo	E	✓	✓	-	-	-
Congo, Dem. Rep. of	E	✓	✓	-	-	-
Cook Islands	E	✓	✓	-	-	-
Costa Rica	D	✓	✓	✓	✓	✓
Curacao	E	✓	✓	-	✓	-
Djibouti	E	✓	✓	✓	-	-
Dominica	D	✓	✓	-	✓	-
Dominican Republic	D	✓	✓	✓	✓	✓
East Timor	B	✓	✓	-	-	-
Ecuador	D	✓	✓	✓	✓	✓
Egypt	C	✓	✓	✓	✓	-
El Salvador	D	✓	✓	✓	✓	✓
Eritrea	E	✓	✓	-	-	-
Eswatini (Swaziland)	E	✓	✓	✓	✓	✓
Ethiopia	E	✓	✓	✓	-	-
Fiji	E	✓	✓	-	-	-
French Guiana	D	✓	✓	-	✓	-
French Polynesia	E	✓	✓	-	-	-
Gabon	E	✓	✓	-	-	-
Gambia	E	✓	✓	-	-	-

ORIGIN	ZONE	IPE	IP	IPF	IE	IEF
Georgia	C	✓	✓	-	✓	✓
Ghana	E	✓	✓	✓	-	-
Grenada	D	✓	✓	-	✓	-
Guadeloupe	D	✓	✓	✓	✓	✓
Guam	E	✓	✓	✓	-	-
Guatemala	D	✓	✓	✓	✓	✓
Guinea	E	✓	✓	-	-	-
Guyana	D	✓	✓	✓	✓	✓
Haiti	D	✓	✓	-	✓	-
Honduras	D	✓	✓	✓	✓	✓
Hong Kong SAR, China	F	✓	✓	✓	✓	✓
India	C	✓	✓	✓	✓	✓
Indonesia	B	✓	✓	✓	✓	✓
Iraq	E	✓	✓	✓	-	-
Israel	C	✓	✓	✓	✓	✓
Ivory Coast	E	✓	✓	✓	-	-
Jamaica	D	✓	✓	✓	✓	✓
Japan	I	✓	✓	✓	✓	✓
Jordan	C	✓	✓	✓	✓	-
Kazakhstan	E	✓	✓	✓	-	-
Kenya	E	✓	✓	✓	✓	✓
Korea, South	B	✓	✓	✓	✓	✓
Kuwait	C	✓	✓	✓	✓	✓
Kyrgyzstan	E	✓	✓	✓	-	-
Laos	B	✓	✓	-	-	-
Lebanon	C	✓	✓	✓	✓	✓
Lesotho	E	✓	✓	-	-	-
Liberia	E	✓	✓	-	-	-
Libya	C	✓	✓	✓	-	-
Macao SAR, China	B	✓	✓	✓	✓	✓
Madagascar	E	✓	✓	✓	-	-
Malawi	E	✓	✓	✓	✓	✓
Malaysia	B	✓	✓	✓	✓	✓
Maldives	E	✓	✓	✓	-	-
Mali	E	✓	✓	✓	-	-
Marshall Islands	E	-	-	✓	-	-
Martinique	D	✓	✓	-	✓	-
Mauritania	E	✓	✓	-	-	-
Mauritius	E	✓	✓	✓	-	-
Mexico	D	✓	✓	✓	✓	✓
Micronesia	E	-	-	✓	-	-
Mongolia	E	✓	✓	-	-	-
Montserrat	D	✓	✓	-	✓	-
Morocco	C	✓	✓	✓	-	-
Mozambique	E	✓	✓	-	-	-
Namibia	E	✓	✓	✓	✓	✓
Nepal	C	✓	✓	✓	-	-
New Caledonia	E	✓	✓	-	-	-
New Zealand	G	✓	✓	✓	✓	✓
Nicaragua	D	✓	✓	✓	✓	✓
Niger	E	✓	✓	✓	-	-
Nigeria	E	✓	✓	✓	✓	✓
Oman	C	✓	✓	✓	✓	✓

ORIGIN	ZONE	IPE	IP	IPF	IE	IEF
Pakistan	C	✓	✓	✓	-	-
Palau	E	-	-	✓	-	-
Palestine Authority	C	✓	✓	-	-	-
Panama	D	✓	✓	✓	✓	✓
Papua New Guinea	E	✓	✓	✓	✓	✓
Paraguay	D	✓	✓	-	✓	-
Peru	D	✓	✓	✓	✓	✓
Philippines	B	✓	✓	✓	✓	✓
Puerto Rico	D	-	✓	✓	✓	✓
Qatar	C	✓	✓	✓	✓	-
Reunion Island	E	✓	✓	-	-	-
Rwanda	E	✓	✓	✓	-	-
Saipan	E	✓	✓	✓	-	-
Samoa, West	E	✓	✓	-	-	-
Saudi Arabia	C	✓	✓	✓	✓	✓
Senegal	E	✓	✓	✓	-	-
Seychelles	E	✓	✓	✓	-	-
Singapore	I	✓	✓	✓	✓	✓
South Africa	D	✓	✓	✓	✓	-
Sri Lanka	C	✓	✓	✓	-	-
St. Kitts & Nevis	D	✓	✓	✓	✓	✓
St. Lucia	D	✓	✓	✓	✓	✓
St. Maarten (NL)	E	✓	✓	-	✓	-
St. Martin (FR)	E	✓	✓	-	✓	-
St. Vincent	D	✓	✓	-	✓	-
Suriname	D	✓	✓	-	✓	-
Taiwan, China	B	✓	✓	✓	✓	✓
Tanzania	E	✓	✓	✓	-	-
Thailand	B	✓	✓	✓	✓	✓
Togo	E	✓	✓	-	-	-
Trinidad & Tobago	D	✓	✓	✓	✓	✓
Tunisia	C	✓	✓	✓	✓	✓
Turks & Caicos Islands	D	✓	✓	-	✓	-
Uganda	E	✓	✓	✓	-	-
United Arab Emirates	C	✓	✓	✓	✓	✓
United States of America	H	✓	✓	✓	✓	✓
Uruguay	D	✓	✓	✓	✓	✓
Uzbekistan	E	✓	✓	✓	✓	✓
Vietnam	B	✓	✓	✓	✓	✓
Virgin Islands (GB)	D	✓	✓	-	✓	-
Virgin Islands (USA)	D	✓	✓	✓	✓	✓
Zambia	E	✓	✓	✓	✓	✓
Zimbabwe	E	✓	✓	✓	-	-

✓ Service available - Service not available

The service availability described in this document might vary by postal code and throughout the year.

* For FedEx International First®, FedEx® International Connect Plus and FedEx® International Deferred Freight zoning information, please refer to the dedicated FIF, FICP and FDF documents.



Benefit from our express delivery by mid-day*

FedEx International Priority® Express (IPE)

WEIGHT (kg)	ZONE A/H	ZONE B/I	ZONE C	ZONE D	ZONE E	ZONE F	ZONE G
	€	€	€	€	€	€	€

Rates when using FedEx® Envelope/FedEx® Pak (0.5 – 2.5 kg)

FedEx Envelope							
0.5	103.05	136.63	143.18	148.02	177.23	129.73	140.77
FedEx Pak							
0.5	138.93	178.27	192.64	219.56	237.49	169.41	183.56
1	160.20	217.49	234.04	265.45	284.18	205.86	230.02
1.5	177.46	252.34	280.28	316.40	346.05	240.01	276.48
2	194.72	287.19	326.52	367.35	407.92	274.16	322.94
2.5	211.98	322.04	372.76	418.30	469.79	308.31	369.40

Rates when using FedEx® 10kg and 25kg Box

FedEx 10kg Box							
≤ 10	341.63	597.24	632.06	718.06	789.92	524.40	667.73
Additional kg	28.62	28.40	30.86	32.44	41.38	27.72	34.22
FedEx 25kg Box							
≤ 25	627.83	949.32	1,046.26	1,210.62	1,307.56	870.56	1,112.81
Additional kg	28.62	20.80	29.54	32.88	42.04	20.80	33.32

Rates when using other packaging material

0.5	164.50	213.60	232.38	247.92	263.58	183.52	234.96
1	183.74	251.18	275.21	295.11	314.58	216.40	281.48
1.5	202.98	288.76	318.04	342.30	365.58	249.28	328.00
2	222.22	326.34	360.87	389.49	416.58	282.16	374.52
2.5	241.46	363.92	403.70	436.68	467.58	315.04	421.04
3	255.77	401.50	437.92	478.06	518.58	347.92	458.39
3.5	270.08	439.08	472.14	519.44	569.58	380.80	495.74
4	284.39	476.66	506.36	560.82	620.58	413.68	533.09
4.5	298.70	514.24	540.58	602.20	671.58	446.56	570.44
5	313.01	551.82	574.80	643.58	722.58	479.44	607.79
5.5	327.32	574.53	603.43	680.82	756.25	501.92	637.76
6	341.63	597.24	632.06	718.06	789.92	524.40	667.73
6.5	355.94	619.95	660.69	755.30	823.59	546.88	697.70
7	370.25	642.66	689.32	792.54	857.26	569.36	727.67
7.5	384.56	665.37	717.95	829.78	890.93	591.84	757.64
8	398.87	688.08	746.58	867.02	924.60	614.32	787.61
8.5	413.18	710.79	775.21	904.26	958.27	636.80	817.58
9	427.49	733.50	803.84	941.50	991.94	659.28	847.55
9.5	441.80	756.21	832.47	978.74	1,025.61	681.76	877.52
10	456.11	778.92	861.10	1,015.98	1,059.28	704.24	907.49
Additional 0.5 kg	14.31	14.20	15.43	16.22	20.69	13.86	17.11
21	770.93	1,087.52	1,199.90	1,373.04	1,514.79	1,005.70	1,283.46
Additional 0.5 kg	14.31	10.40	14.77	16.44	21.02	10.40	16.66
30	1,028.51	1,274.72	1,465.76	1,668.96	1,893.15	1,192.90	1,583.34
Additional 0.5 kg	14.20	15.43	14.77	16.44	21.02	15.88	16.66
45	1,448.13	1,737.62	1,912.32	2,164.84	2,527.87	1,669.30	2,084.82
Additional 0.5 kg	13.98	15.43	18.23	19.12	24.94	15.88	18.34
70.5	2,161.11	2,524.55	2,842.05	3,139.96	3,799.81	2,479.18	3,020.16

Rate per kg (multiply by total shipment weight)							
71 – 99	30.87	42.50	40.60	44.95	54.80	41.71	42.94
100 – 299	25.61	38.47	33.67	44.95	54.80	38.14	42.94
300 – 499	25.61	38.47	33.67	44.95	54.80	38.14	42.94
500 – 999	25.61	38.47	33.67	44.95	54.80	38.14	42.94
1,000 +	25.61	38.47	33.67	44.95	54.80	38.14	42.94

Any shipment with a weight between any of the above weight bands will be charged at the higher weight band rate.

*Availability of services and transit times may vary depending on origin and destination. Terms and conditions apply – visit [fedex.com](https://www.fedex.com) for full details of our services.



FedEx International Priority® (IP)

WEIGHT (kg)	ZONE A/H	ZONE B/I	ZONE C	ZONE D	ZONE E	ZONE F	ZONE G
	€	€	€	€	€	€	€

Rates when using FedEx® Envelope/FedEx® Pak (0.5 – 2.5 kg)

FedEx Envelope							
0.5	98.10	130.07	136.40	141.00	168.84	123.52	134.10
FedEx Pak							
0.5	132.27	169.76	183.44	209.09	226.23	161.36	174.82
1	152.52	207.14	222.89	252.79	270.74	196.10	219.10
1.5	168.97	240.38	266.94	301.33	328.83	228.65	263.38
2	185.42	273.62	310.99	349.87	386.92	261.20	307.66
2.5	201.87	306.86	355.04	398.41	445.01	293.75	351.94

Rates when using FedEx® 10kg and 25kg Box

FedEx 10kg Box							
≤ 10	325.52	568.68	601.85	683.62	752.12	499.30	635.76
Additional kg	27.28	27.06	29.30	30.86	39.36	26.40	32.64
FedEx 25kg Box							
≤ 25	598.32	903.68	995.89	1,152.38	1,245.08	828.58	1,059.68
Additional kg	27.28	19.90	28.18	31.32	40.02	19.90	31.76

Rates when using other packaging material

0.5	156.68	203.41	221.31	236.07	251.06	174.79	223.78
1	175.02	239.20	262.13	281.02	299.60	206.10	268.07
1.5	193.36	274.99	302.95	325.97	348.14	237.41	312.36
2	211.70	310.78	343.77	370.92	396.68	268.72	356.65
2.5	230.04	346.57	384.59	415.87	445.22	300.03	400.94
3	243.68	382.36	417.13	455.24	493.76	331.34	436.50
3.5	257.32	418.15	449.67	494.61	542.30	362.65	472.06
4	270.96	453.94	482.21	533.98	590.84	393.96	507.62
4.5	284.60	489.73	514.75	573.35	639.38	425.27	543.18
5	298.24	525.52	547.29	612.72	687.92	456.58	578.74
5.5	311.88	547.10	574.57	648.17	720.02	477.94	607.25
6	325.52	568.68	601.85	683.62	752.12	499.30	635.76
6.5	339.16	590.26	629.13	719.07	784.22	520.66	664.27
7	352.80	611.84	656.41	754.52	816.32	542.02	692.78
7.5	366.44	633.42	683.69	789.97	848.42	563.38	721.29
8	380.08	655.00	710.97	825.42	880.52	584.74	749.80
8.5	393.72	676.58	738.25	860.87	912.62	606.10	778.31
9	407.36	698.16	765.53	896.32	944.72	627.46	806.82
9.5	421.00	719.74	792.81	931.77	976.82	648.82	835.33
10	434.64	741.32	820.09	967.22	1,008.92	670.18	863.84
Additional 0.5 kg	13.64	13.53	14.65	15.43	19.68	13.20	16.32
21	734.72	1,035.40	1,141.83	1,306.91	1,442.21	957.33	1,222.44
Additional 0.5 kg	13.64	9.95	14.09	15.66	20.01	9.95	15.88
30	980.24	1,214.50	1,395.45	1,588.79	1,802.39	1,136.43	1,508.28
Additional 0.5 kg	13.30	14.65	14.09	15.66	20.01	15.09	15.88
45	1,379.24	1,654.00	1,821.54	2,061.16	2,406.61	1,589.13	1,986.30
Additional 0.5 kg	13.30	14.65	17.33	18.23	23.71	15.09	17.45
70.5	2,057.54	2,401.15	2,705.37	2,990.89	3,615.82	2,358.72	2,876.25

Rate per kg (multiply by total shipment weight)							
71 – 99	29.42	40.48	38.69	42.83	52.23	39.70	40.93
100 – 299	24.38	36.68	32.10	42.83	52.23	36.35	40.93
300 – 499	24.38	36.68	32.10	42.83	52.23	36.35	40.93
500 – 999	24.38	36.68	32.10	42.83	52.23	36.35	40.93
1,000 +	24.38	36.68	32.10	42.83	52.23	36.35	40.93

FedEx International Priority® Freight (IPF)

WEIGHT (kg)	ZONE A/H	ZONE B/I	ZONE C	ZONE D	ZONE E	ZONE F	ZONE G
	€	€	€	€	€	€	€
68	2,121.60	2,478.60	2,775.76	3,087.20	3,810.04	2,456.16	2,988.60
68.5	2,152.80	2,515.05	2,816.58	3,132.60	3,866.07	2,492.28	3,032.55
69	2,152.80	2,515.05	2,816.58	3,132.60	3,866.07	2,492.28	3,032.55
69.5	2,184.00	2,551.50	2,857.40	3,178.00	3,922.10	2,528.40	3,076.50
70	2,184.00	2,551.50	2,857.40	3,178.00	3,922.10	2,528.40	3,076.50
70.5	2,198.87	2,977.03	2,906.03	3,199.97	3,953.99	2,937.98	3,112.64
Rate per kg (multiply by total shipment weight)							
71 – 99	30.97	41.93	40.93	45.07	55.69	41.38	43.84
100 – 299	25.49	37.91	33.89	45.07	55.69	37.80	43.84
300 – 499	25.49	37.91	33.89	45.07	55.69	37.80	43.84
500 – 999	25.49	37.91	33.89	45.07	55.69	37.80	43.84
1,000 +	25.49	37.91	33.89	45.07	55.69	37.80	43.84

Shipments must be properly palletized and shrink-wrapped. See the packaging guidelines on [fedex.com](https://www.fedex.com). Any shipment with a weight between any of the above weight bands will be charged at the higher weight band rate.

* Availability of services and transit times may vary depending on origin and destination. Terms and conditions apply – visit [fedex.com](https://www.fedex.com) for full details of our services.



When timing is everything, use our early morning delivery services* for your worldwide shipments



FedEx International First® (FIF)

ORIGIN	ZONE	WEIGHT (kg)	ZONE A/H	ZONE B/I	ZONE C	ZONE D	ZONE E
Anguilla	E		€	€	€	€	€
Antigua & Barbuda	E						
Argentina	D						
Aruba	E						
Bahamas	D						
Barbados	D						
Belize	D						
Bermuda	D						
Bolivia	D						
Bonaire, Saba, St. Eustatius	D						
Brazil	D						
Canada	A						
Cayman Islands	D						
Chile	D						
Colombia	D						
Costa Rica	D						
Curacao	D						
Dominica	D						
Dominican Republic	D						
Ecuador	D						
El Salvador	D						
French Guiana	D						
Grenada	D						
Guadeloupe	D						
Guatemala	D						
Guyana	D						
Haiti	D						
Honduras	D						
Israel	C						
Jamaica	D						
Korea, South	B						
Malaysia	B						
Martinique	D						
Mexico	D						
Montserrat	D						
Nicaragua	D						
Panama	D						
Paraguay	D						
Peru	D						
Puerto Rico	D						
Singapore	I						
St. Kitts & Nevis	D						
St. Lucia	D						
St. Maarten (NL)	D						
St. Martin (FR)	D						
St. Vincent	D						
Suriname	D						
Taiwan, China	B						
Thailand	B						
Trinidad & Tobago	D						
Turks & Caicos Islands	D						
United States of America	H						
Uruguay	D						
Virgin Islands (GB)	D						
Virgin Islands (USA)	D						

Rates when using FedEx® Envelope/FedEx® Pak (0.5 – 2.5 kg)							
FedEx Envelope							
	0.5	154.33	187.09	193.47	198.17	226.46	
FedEx Pak							
	0.5	189.22	227.57	241.33	267.72	288.86	
	1	215.05	275.21	291.88	323.52	345.67	
	1.5	236.07	317.48	348.24	385.58	420.93	
	2	257.09	359.75	404.60	447.64	496.19	
	2.5	278.11	402.02	460.96	509.70	571.45	
Rates when using other packaging material							
	0.5	218.52	267.83	290.64	309.88	329.90	
	1	242.68	314.92	343.87	368.92	393.65	
	1.5	266.84	362.01	397.10	427.96	457.40	
	2	291.00	409.10	450.33	487.00	521.15	
	2.5	315.16	456.19	503.56	546.04	584.90	
	3	333.17	503.28	546.39	597.70	648.65	
	3.5	351.18	550.37	589.22	649.36	712.40	
	4	369.19	597.46	632.05	701.02	776.15	
	4.5	387.20	644.55	674.88	752.68	839.90	
	5	405.21	691.64	717.71	804.34	903.65	
	5.5	423.22	719.93	753.50	850.97	945.70	
	6	441.23	748.22	789.29	897.60	987.75	
	6.5	459.24	776.51	825.08	944.23	1,029.80	
	7	477.25	804.80	860.87	990.86	1,071.85	
	7.5	495.26	833.09	896.66	1,037.49	1,113.90	
	8	513.27	861.38	932.45	1,084.12	1,155.95	
	8.5	531.28	889.67	968.24	1,130.75	1,198.00	
	9	549.29	917.96	1,004.03	1,177.38	1,240.05	
	9.5	567.30	946.25	1,039.82	1,224.01	1,282.10	
	10	585.31	974.54	1,075.61	1,270.64	1,324.15	
	Additional 0.5 kg	18.00	17.89	19.24	20.13	25.72	
	21	981.32	1,363.20	1,498.10	1,713.62	1,890.44	
	Additional 0.5 kg	18.01	12.97	18.45	20.25	26.17	
	30	1,305.50	1,596.66	1,830.20	2,078.12	2,361.50	
	Additional 0.5 kg	17.55	19.35	18.45	20.25	26.17	
	45	1,832.11	2,177.16	2,388.28	2,689.86	3,151.86	
	Additional 0.5 kg	17.55	19.35	23.03	24.49	31.43	
	70.5	2,727.16	3,164.01	3,562.81	3,938.85	4,754.79	
Rate per kg (multiply by total shipment weight)							
	71 – 99	39.92	53.01	51.78	57.14	68.33	
	100 – 299	39.92	53.01	51.78	57.14	68.33	
	300 – 499	39.92	53.01	51.78	57.14	68.33	
	500 – 999	39.92	53.01	51.78	57.14	68.33	
	1,000 +	39.92	53.01	51.78	57.14	68.33	

Shipments must be properly packed. See the packaging guidelines on [fedex.com](https://www.fedex.com). Any shipment with a weight between any of the above weight bands will be charged at the higher weight band rate.

* Availability of services and transit times may vary depending on origin and destination. Terms and conditions apply – visit [fedex.com](https://www.fedex.com) for full details of our services.



Benefit from our dedicated e-commerce service
FedEx® International Connect Plus (FICP)

Find the zone for your shipment's origin.

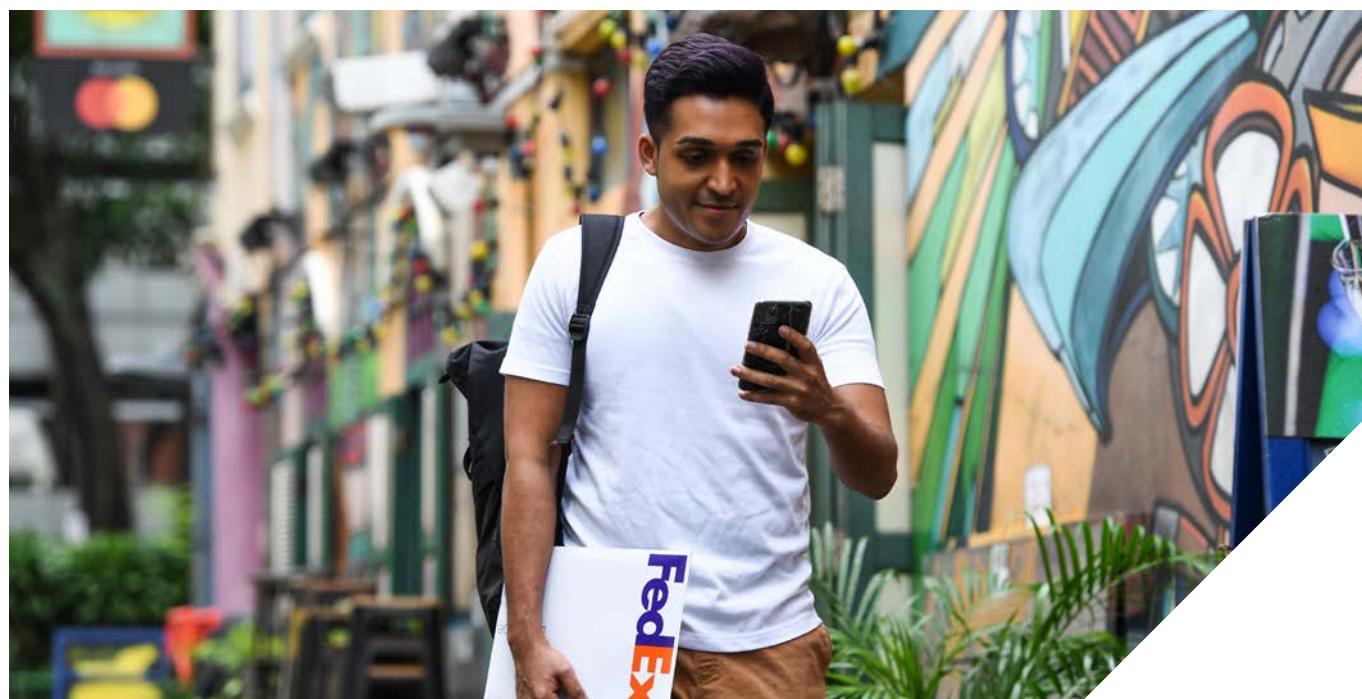
Availability of service and transit times may vary depending on origin and destination. For more information, please contact your FedEx Sales Representative or visit fedex.com/ficp.

ORIGIN	Zone	ORIGIN	Zone	ORIGIN	Zone
Algeria	C	Gambia	E	Nigeria	E
Angola	E	Georgia	C	Oman	C
Anguilla	D	Ghana	E	Pakistan	C
Antigua & Barbuda	D	Grenada	D	Palau	E
Argentina	D	Guadeloupe	D	Palestine Authority	C
Armenia	C	Guam	E	Panama	D
Aruba	D	Guatemala	D	Papua New Guinea	E
Australia	G	Guinea	E	Paraguay	D
Azerbaijan	C	Guyana	D	Peru	D
Bahamas	D	Haiti	D	Philippines	B
Bahrain	C	Honduras	D	Puerto Rico	D
Bangladesh	C	Hong Kong SAR, China	F	Qatar	C
Barbados	D	India	C	Reunion Island	E
Belize	D	Indonesia	B	Rwanda	E
Benin	E	Iraq	E	Saipan	E
Bermuda	D	Israel	C	Samoa, West	E
Bhutan	C	Ivory Coast	E	Saudi Arabia	C
Bolivia	D	Jamaica	D	Senegal	E
Bonaire, Saba, St. Eustatius	E	Japan	I	Seychelles	E
Botswana	E	Jordan	C	Singapore	I
Brazil	D	Kazakhstan	E	South Africa	D
Brunei	C	Kenya	E	Sri Lanka	C
Burkina Faso	E	Korea, South	B	St. Kitts & Nevis	D
Burundi	E	Kuwait	C	St. Lucia	D
Cambodia	B	Kyrgyzstan	E	St. Maarten (NL)	E
Cameroon	E	Laos	B	St. Martin (FR)	E
Canada	A	Lebanon	C	St. Vincent	D
Cape Verde	E	Lesotho	E	Suriname	D
Cayman Islands	D	Liberia	E	Taiwan, China	B
Chad	E	Libya	C	Tanzania	E
Chile	D	Macao SAR, China	B	Thailand	B
China	F	Madagascar	E	Togo	E
Colombia	D	Malawi	E	Tonga	E
Congo	E	Malaysia	B	Trinidad & Tobago	D
Congo, Dem. Rep. of	E	Maldives	E	Tunisia	C
Cook Islands	E	Mali	E	Turks & Caicos Islands	D
Costa Rica	D	Marshall Islands	E	Uganda	E
Curacao	E	Martinique	D	United Arab Emirates	C
Djibouti	E	Mauritania	E	United States of America	H
Dominica	D	Mauritius	E	Uruguay	D
Dominican Republic	D	Mexico	D	Uzbekistan	E
East Timor	B	Micronesia	E	Vanuatu	E
Ecuador	D	Mongolia	E	Vietnam	B
Egypt	C	Montserrat	D	Virgin Islands (GB)	D
El Salvador	D	Morocco	C	Virgin Islands (USA)	D
Eritrea	E	Mozambique	E	Wallis & Futuna	E
Eswatini (Swaziland)	E	Namibia	E	Zambia	E
Ethiopia	E	Nepal	C	Zimbabwe	E
Fiji	E	New Caledonia	E		
French Guiana	D	New Zealand	G		
French Polynesia	E	Nicaragua	D		
Gabon	E	Niger	E		

Find the rate corresponding to your zone and shipment weight.

WEIGHT (kg)	ZONE A/H	ZONE B/I	ZONE C	ZONE D	ZONE E	ZONE F	ZONE G
	€	€	€	€	€	€	€
0.5	131.84	147.05	182.84	197.83	209.01	144.71	187.09
1	146.93	169.98	217.40	235.41	249.83	170.76	225.67
1.5	162.02	192.91	251.96	272.99	290.65	196.81	264.25
2	177.11	215.84	286.52	310.57	331.47	222.86	302.83
2.5	192.20	238.77	321.08	348.15	372.29	248.91	341.41
3	201.49	257.55	344.01	375.11	407.07	267.59	366.13
3.5	210.78	276.33	366.94	402.07	441.85	286.27	390.85
4	220.07	295.11	389.87	429.03	476.63	304.95	415.57
4.5	229.36	313.89	412.80	455.99	511.41	323.63	440.29
5	238.65	332.67	435.73	482.95	546.19	342.31	465.01
5.5	246.37	347.32	457.53	511.14	572.24	359.31	488.16
6	254.09	361.97	479.33	539.33	598.29	376.31	511.31
6.5	261.81	376.62	501.13	567.52	624.34	393.31	534.46
7	269.53	391.27	522.93	595.71	650.39	410.31	557.61
7.5	277.25	405.92	544.73	623.90	676.44	427.31	580.76
8	284.97	420.57	566.53	652.09	702.49	444.31	603.91
8.5	292.69	435.22	588.33	680.28	728.54	461.31	627.06
9	300.41	449.87	610.13	708.47	754.59	478.31	650.21
9.5	308.13	464.52	631.93	736.66	780.64	495.31	673.36
10	315.85	479.17	653.73	764.85	806.69	512.31	696.51
Additional 0.5 kg	5.60	6.93	10.52	9.51	13.76	5.59	10.29
21	439.05	631.63	883.15	975.08	1,109.41	635.29	922.89
Additional 0.5 kg	5.60	6.93	8.50	10.52	13.76	5.59	10.29
30	539.85	756.37	1,036.15	1,164.44	1,357.09	735.91	1,108.11
Additional 0.5 kg	7.38	9.61	8.50	10.52	13.76	6.83	10.29
32.5	576.75	804.42	1,078.65	1,217.04	1,425.89	770.06	1,159.56
Rate per kg (multiply by total shipment weight)							
33 – 68	18.56	25.83	34.67	39.03	45.74	24.60	37.24

Any shipment with a weight between any of the above weight bands will be charged at the higher weight band rate.





Save on your less urgent shipments with our economy services

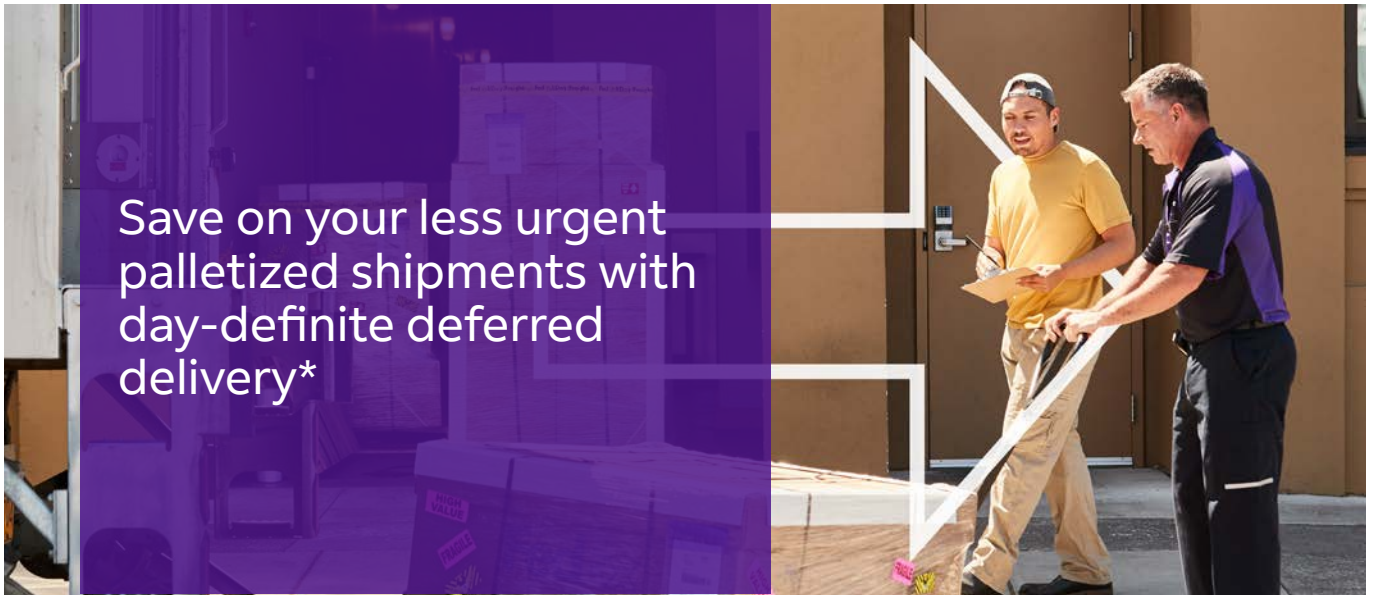
FedEx International Economy® (IE)

WEIGHT (kg)	ZONE A/H	ZONE B/I	ZONE C	ZONE D	ZONE E	ZONE F	ZONE G
	€	€	€	€	€	€	€
0.5	144.93	199.28	202.08	218.18	227.91	172.44	219.41
1	161.37	234.40	238.31	258.44	272.30	202.97	262.91
1.5	177.81	269.52	274.54	298.70	316.69	233.50	306.41
2	194.25	304.64	310.77	338.96	361.08	264.03	349.91
2.5	210.69	339.76	347.00	379.22	405.47	294.56	393.41
3	221.09	374.88	373.50	410.19	445.17	325.09	428.75
3.5	231.49	410.00	400.00	441.16	484.87	355.62	464.09
4	241.89	445.12	426.50	472.13	524.57	386.15	499.43
4.5	252.29	480.24	453.00	503.10	564.27	416.68	534.77
5	262.69	515.36	479.50	534.07	603.97	447.21	570.11
5.5	271.19	535.93	502.99	564.49	632.38	468.12	598.18
6	279.69	556.50	526.48	594.91	660.79	489.03	626.25
6.5	288.19	577.07	549.97	625.33	689.20	509.94	654.32
7	296.69	597.64	573.46	655.75	717.61	530.85	682.39
7.5	305.19	618.21	596.95	686.17	746.02	551.76	710.46
8	313.69	638.78	620.44	716.59	774.43	572.67	738.53
8.5	322.19	659.35	643.93	747.01	802.84	593.58	766.60
9	330.69	679.92	667.42	777.43	831.25	614.49	794.67
9.5	339.19	700.49	690.91	807.85	859.66	635.40	822.74
10	347.69	721.06	714.40	838.27	888.07	656.31	850.81
Additional 0.5 kg	7.27	7.94	13.76	10.40	15.21	8.28	9.73
21	507.63	896.52	1,017.12	1,068.08	1,222.69	838.47	1,068.90
Additional 0.5 kg	7.27	8.72	13.76	11.41	15.21	8.28	13.76
30	638.49	1,053.48	1,264.80	1,273.46	1,496.47	987.51	1,316.58
Additional 0.5 kg	8.38	12.75	13.08	11.41	15.21	12.97	13.76
45	891.80	1,435.98	1,657.20	1,618.66	1,957.91	1,376.61	1,731.62
Additional 0.5 kg	10.29	12.75	13.08	14.31	20.35	12.97	16.00
70.5	1,416.59	2,086.23	2,318.65	2,348.47	2,995.76	2,038.08	2,532.57
Rate per kg (multiply by total shipment weight)							
71 – 99	20.25	35.22	32.66	33.43	43.06	34.33	35.67
100 – 299	19.46	32.10	27.62	33.43	40.70	31.54	35.67
300 – 499	19.46	32.10	27.62	33.43	40.70	31.54	35.67
500 – 999	19.46	32.10	27.62	33.43	40.70	31.54	35.67
1,000 +	19.46	32.10	27.62	33.43	40.70	31.54	35.67

FedEx International Economy® Freight (IEF)

WEIGHT (kg)	ZONE A/H	ZONE B/I	ZONE C	ZONE D	ZONE E	ZONE F	ZONE G
	€	€	€	€	€	€	€
Rate per kg (multiply by total shipment weight)							
68 – 99	21.25	36.35	34.90	35.79	45.96	36.01	38.02
100 – 299	20.69	32.99	29.42	35.79	43.62	32.88	38.02
300 – 499	20.69	32.99	29.42	35.79	43.62	32.88	38.02
500 – 999	20.69	32.99	29.42	35.79	43.62	32.88	38.02
1,000 +	20.69	32.99	29.42	35.79	43.62	32.88	38.02

Shipments must be properly palletized and shrink-wrapped. See the packaging guidelines on [fedex.com](https://www.fedex.com). Any shipment with a weight between any of the above weight bands will be charged at the higher weight band rate. FedEx International Economy and FedEx International Economy Freight rates may be different if FedEx® Regional Economy and FedEx® Regional Economy Freight are available to you.



FedEx® International Deferred Freight (FDF)

You can choose one of the following four shipping options:

Door-to-Door (DTD), **Door-to-Airport (DTA)**, **Airport-to-Door (ATD)** or **Airport-to-Airport (ATA)**.

Find the zone for your shipment's origin.

ORIGIN	Zone	ORIGIN	Zone	ORIGIN	Zone
Brazil	D	Hong Kong SAR, China	F	United States of America	H
Canada	A	Japan	I		
China	F	Mexico	D		

Find the rate corresponding to your zone and shipment weight.

WEIGHT (kg)	ZONE A/H	ZONE D	ZONE F	ZONE I
	€	€	€	€
Rate per kg (multiply by total shipment weight)				
68 - 99	20.18	33.99	34.21	34.53
100 - 299	19.66	33.99	31.24	31.34
300 - 499	19.66	33.99	31.24	31.34
500 - 999	19.66	33.99	31.24	31.34
1,000 +	19.66	33.99	31.24	31.34

Shipments must be properly palletized and shrink-wrapped. See the packaging guidelines on [fedex.com](https://www.fedex.com). Any shipment with a weight between any of the above weight bands will be charged at the higher weight band rate.

* Availability of services and transit times may vary depending on origin and destination. Terms and conditions apply – visit [fedex.com](https://www.fedex.com) for full details of our services.