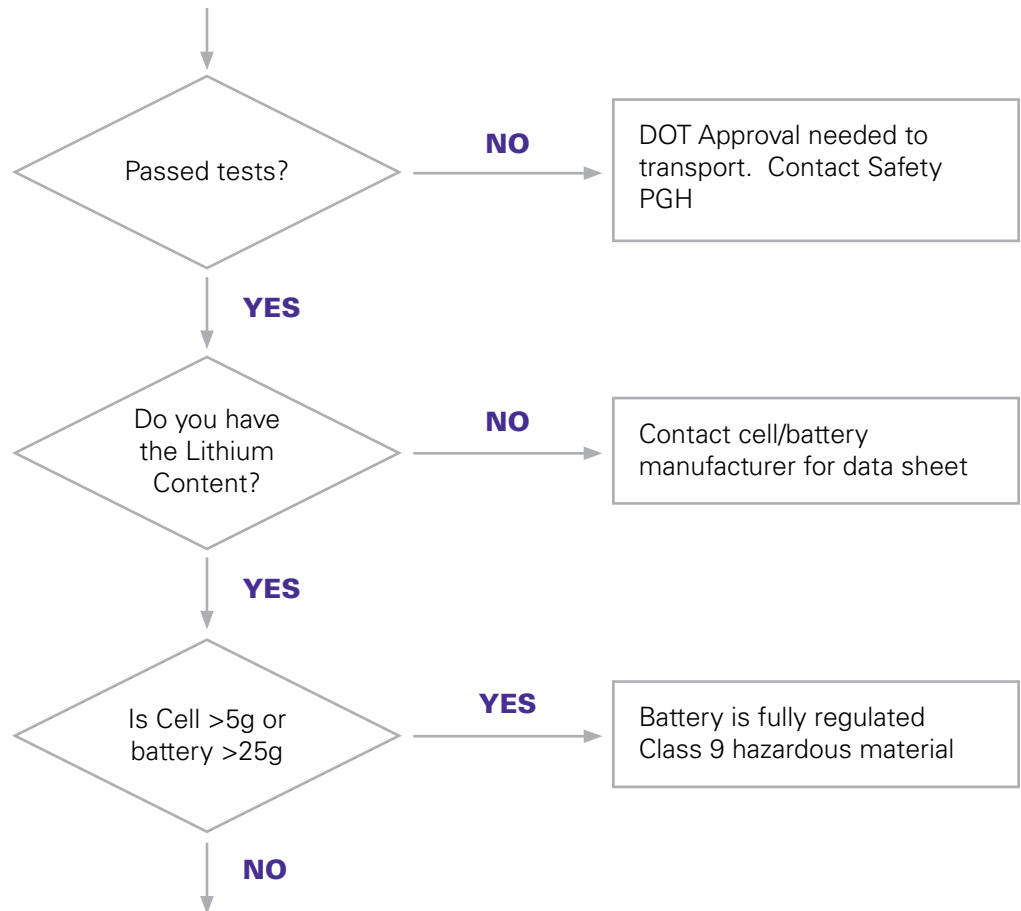


Small-Medium Lithium Metal Battery Domestic Ground US Only Shipping Flow Chart



Lithium Battery
Handling Label

All Cells and Batteries must pass UN Safety Tests



Battery can be shipped with reduced regulatory requirements:

- Batteries must be placed in inner packaging designed to prevent short circuits **and minimize damage**.
- Package must not exceed 66lbs. (30Kg) unless packaged with or in equipment.
- Markings that indicate the package contains lithium metal cells/batteries, an indication that the package must be handled with care and a flammability hazard exists if the package becomes damaged, an indication that special handling procedures are needed if the package becomes damaged, to include inspection/repackaging and a phone number for additional information. Although only mandated for air domestically **FXG strongly recommends use of the lithium battery handling label shown above** to meet these requirements. Each package must also include a document that contains this same information.
- Primary (non-rechargeable) lithium metal batteries are forbidden aboard passenger aircraft and must be marked with the text: "Primary Lithium Batteries – Forbidden for Transport Aboard Passenger Aircraft" or "Lithium Metal Batteries – Forbidden for Transport Aboard Passenger Aircraft." NOTE: FedEx Ground does not accept the orange Cargo Aircraft Only (CAO) Label for transport to/from/within Alaska and Hawaii.
- Packages of medium-sized batteries (>5g but <25g) must be additionally marked with the following statement: "LITHIUM BATTERIES FORBIDDEN FOR TRANSPORT ABOARD AIRCRAFT AND VESSEL."