



Jewelry Shipping Program

WELCOME

Some shipments are worthy of higher coverage

With the FedEx® Declared Value Advantage service, eligible shippers can declare additional coverage for specialty jewelry and gemstones. They can declare up to US\$100,000* per domestic shipment and up to US\$25,000 to select international destinations. The standard maximum declared value is only US\$1,000.

First, review this FedEx Declared Value Advantage service guide. To determine if you qualify, please apply by giving FedEx some information about your company. Once you submit your application, a FedEx Declared Value Advantage representative will contact you.

Note: This service is not available for one-time or occasional jewelry shipments.





Jewelry Shipping Program

SERVICE COVERAGE



The smart choice for shipping jewelry and gemstones

When items are too valuable for standard shipping methods, we offer FedEx® Declared Value Advantage.

SERVICE DESCRIPTION

Eligible customers can declare a value of up to US\$100,000* on jewelry and gemstones (normally limited to US\$1,000). FedEx Declared Value Advantage is a contract-only service. To determine if you qualify, we'll consider:

- The length of your relationship with FedEx
- Shipping history
- Package volume
- Commodities requested
- Claims
- Loss and revenue history

Please apply by submitting some information about your company. A FedEx Declared Value Advantage representative will contact you after you apply.

SERVICE DAYS

Monday through Friday; Saturday if available. Call 1.800.GoFedEx (1.800.463.3339) to check availability.

SERVICE AREA

Within the U.S., including Hawaii and Alaska, and to select international destinations.

PRICING

Reduction in the standard rate for declared value charges. In addition, volume discounts and association discounts may apply.

EXTRAS

Use FedEx expedited features, such as online tracking, zone-based pricing, and electronic shipping tools

AVAILABILITY

FedEx Declared Value Advantage is available for use with the following shipping services:

- FedEx First Overnight®
- FedEx Priority Overnight®
- FedEx Standard Overnight®
- FedEx 2Day® A.M.
- FedEx 2Day®
- FedEx International Priority®
- FedEx International Economy®

DECLARED VALUE: Our maximum liability for packages

The declared value of any package represents our maximum liability in connection with shipment of that package. For more information, see the Declared Value and Limits of Liability section in the [FedEx Service Guide](#).¹

*Check your FedEx Declared Value Advantage contract for your current maximum declared value allowed. If you want to request a higher declared value limit, contact your FedEx account executive.

¹ <https://www.fedex.com/en-us/service-guide.html>



Jewelry Shipping Program

PACKING TIPS



Protect your jewelry and gemstones

These packing pointers will come in handy when shipping with the FedEx® Declared Value Advantage program.*

ALWAYS USE FEDEX EXPEDITED BOXES

Options include FedEx® Small Box, FedEx® Medium Box, and FedEx® Large Box. Never ship valuables using any type of envelope or folder as the outer package. All packaging other than the FedEx Small Box, FedEx Medium Box, and FedEx Large Box must be reviewed by FedEx security and packaging engineers.



PACK SHIPMENTS WITH CARE

Use cushioning materials to help prevent contents from shifting or rattling. If shipping multiple packages, don't tape the boxes together.

INCLUDE YOUR COMPANY'S PACKING SLIP

Place a copy of your company's packing slip inside the inner shipping box. Include the FedEx tracking number and contact information for both the sender and the recipient.

LABEL PACKAGES CAREFULLY

To avoid revealing the contents, label the outside box cautiously. Don't use business names or jewelry terms in the shipping or return addresses.

* Limitations may apply. FedEx One Rate® pricing cannot be combined with FedEx Declared Value Advantage benefits.

² <http://mpimagnet.com>

³ <http://mpimagnet.com>

ADD EXTRA PROTECTION IF NEEDED

You can place valuables inside a FedEx Security Box. The kit is complimentary for customers using FedEx® expedited services. Or you can purchase a FedEx Box with Safe Insert directly from the manufacturer, [Magnetic Products](#).²

FedEx Security Box Kit: This corrugated retention insert will suspend the product inside a FedEx Medium Box or FedEx Large Box. The insert provides extra protection from abrasions, indentations, punctures, and tears.

	Inside dimensions	Weight when empty (including box and insert)
FedEx Medium Box	9" x 5" x 12"	13.8 oz.
FedEx Large Box	9" x 8" x 12"	18.9 oz.

FedEx Box with Safe Insert: This reinforced aluminum container is designed to enhance safety, security, and strength. It fits inside a FedEx Medium Box or FedEx Large Box, and has a combination lock and key only you and your recipient can access.

	Inside dimensions	Weight when empty (including box and container)
FedEx Medium Box	11-1/2" x 2-3/8" x 13-1/4"	4.2 lbs.
FedEx Large Box	12-3/8" x 3" x 17-1/2"	5.3 lbs.

Additional fees apply. You can order this packaging directly from the manufacturer, either [online](#)³ or by calling 1.800.544.5930.



Jewelry Shipping Program

SHIPPING TIPS

Take advantage of support for high-value shipments

Use these tips and tools to help your items travel safely and efficiently.



CHOOSE AN OVERNIGHT OPTION

We suggest using FedEx Priority Overnight® or FedEx Standard Overnight® service. Select Saturday delivery when tendering your shipments on a Friday.



HAVE SOMEONE SIGN FOR THE PACKAGE

When creating your shipment, select Direct Signature Required as your FedEx® Delivery Signature Option.



SCHEDULE A PICKUP OR DROP OFF YOUR PACKAGE

You can [schedule regular pickups](https://www.fedex.com/en-us/shipping/schedule-manage-pickups.html)⁴ and let us come to you. Or you can drop off your packages at select FedEx and FedEx Office locations that are equipped to handle high-value goods. Always hand packages directly to a FedEx agent or FedEx Office team member and ask for a receipt. Find participating drop off locations by calling 1.800.GoFedEx (1.800.463.3339) or see your FedEx® Declared Value Advantage agreement.



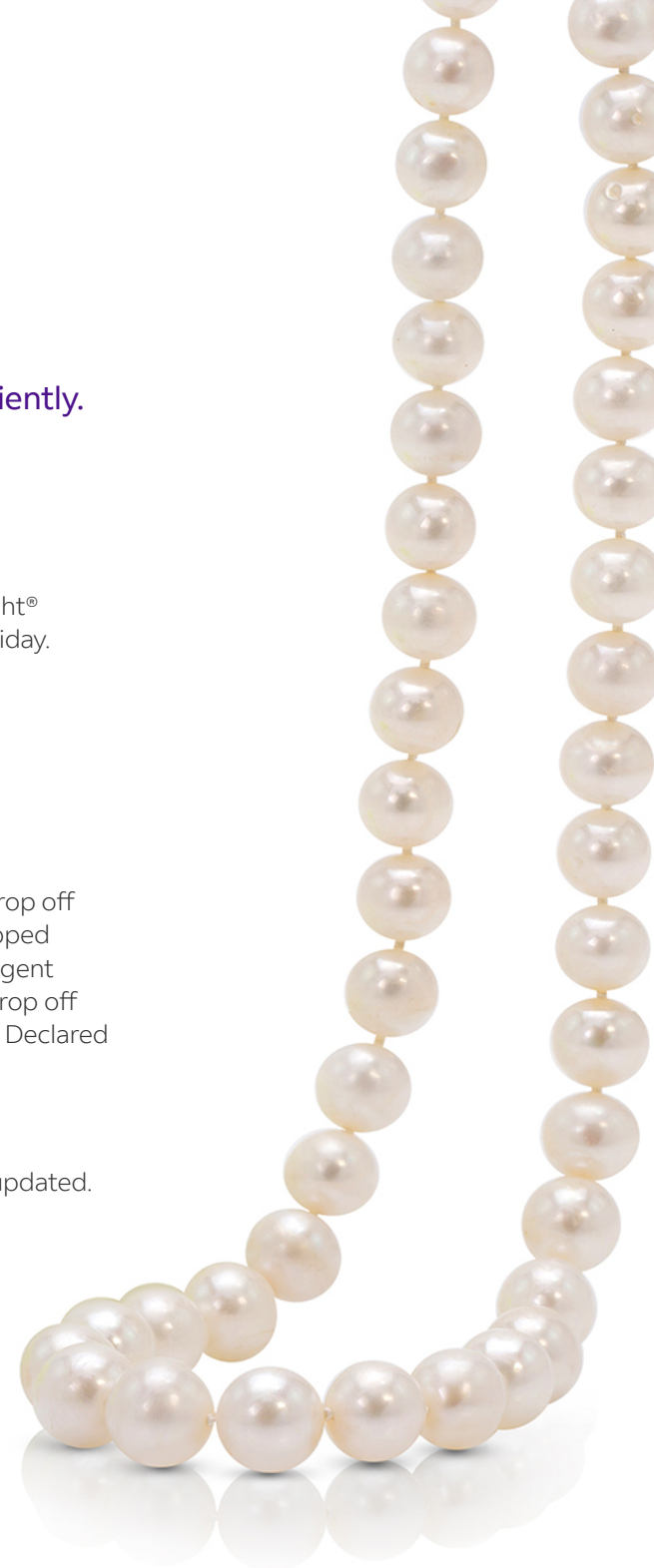
TRACK YOUR PACKAGE STATUS

FedEx InSight® is a web-based tracking application that helps you stay updated. You'll also be notified when your packages are delivered.



KEEP YOUR RECIPIENTS INFORMED

Notify them about the contents of your shipment and its expected delivery date and time. Recipients should also be encouraged to check each package before signing for delivery.





Jewelry Shipping Program

DROP OFF LOCATIONS

Choose the service and location that fits your needs

The options you pick affect the maximum value you can declare.

MAXIMUM DECLARED VALUE*

Eligible FedEx® Declared Value Advantage shippers can declare a value of up to US\$100,000 per domestic shipment and up to US\$25,000 to select international destinations. Check your FedEx Declared Value Advantage contract for your current maximum. If you want to request a higher declared value limit, contact your FedEx account executive.

Staffed FedEx ShipCenter® locations

FedEx Office
6 West 48th St.
New York, NY 10036

FedEx Office
55 E Monroe St.
Chicago, IL 60603

FedEx Office
554 S Grand Ave.
Los Angeles, CA 90071

You can also search for staffed locations near you on fedex.com.⁵
Excludes Walgreens, Walmart, and FedEx® Drop Box locations.

Available Services

FedEx First Overnight®

FedEx Priority Overnight®

FedEx Standard Overnight®

FedEx 2Day® A.M.

FedEx 2Day®

FedEx International Priority®

FedEx International Economy®

*This replaces the standard maximum declared value of US\$1,000.

⁵ <https://local.fedex.com/en/fxo-ship-center>



Jewelry Shipping Program

INTERNATIONAL SUPPORT

Export valuables to key countries and territories

Get reliable shipping from the U.S. to select international destinations. With the FedEx® Declared Value Advantage service, you can declare a value for carriage up to US\$25,000 (unless otherwise noted). For more information, go to [fedex.com/declaredvalue](https://www.fedex.com/declaredvalue).⁶

U.S. EXPORT TIPS

As the shipper, it's your responsibility to know and comply with all applicable international laws and regulations of the destination country or territory. You'll find regulations in [FedEx® Global Trade Manager](#).⁷

As a FedEx Declared Value Advantage shipper, you're required to:

- ✓ Have a valid FedEx account number.
- ✓ Have an executed Declared Value Advantage agreement on file.
 - Ensure that the countries and territories you're exporting to are covered under your agreement.
 - Know the limits of liability covered under your agreement.
- ✓ File U.S. Department of the Treasury/U.S. Customs and Border Protection Form 4455 when shipping tradeshow materials, displays, or jewelry returns or repairs.
- ✓ Use correct Harmonized System codes.
- ✓ Complete a Commercial Invoice (CI) with a full description of the commodities. Make sure to include it in your package, with answers to the following questions:
 - What is the commodity?
 - What is the commodity made of?
 - What is the full value of each item?
 - Is it precious jewelry or semiprecious jewelry?
 - What type of jewelry is it? (e.g., necklace, earrings)

If the total value of the jewelry under the same Schedule B commodity number is greater than US\$2,500, you must also file Electronic Export Information (otherwise known as Shipper's Export Declaration). The FedEx International Broker Select® option isn't available under the FedEx Declared Value Advantage agreement; all shipments must be cleared through FedEx. For questions, please contact FedEx International Customer Service at 1.800.GoFedEx (1.800.463.3339) and say "international services."

Ship to select destinations from the U.S. with FedEx Declared Value Advantage and declare up to US\$25,000 (unless otherwise noted). [See the full list of eligible countries and territories](#).⁸

⁶ <https://www.fedex.com/en-us/shipping/high-value-jewelry-declared-value-form.html>

⁷ https://www.fedex.com/GTM?cntry_code=us

⁸ <https://www.fedex.com/en-us/shipping/high-value-jewelry-declared-value-form.html#countries>



Jewelry Shipping Program

FAQs

Get answers to frequently asked questions

If you don't find the help you need here, see the [Contacts page](#). Find out how to reach us—and see the jewelry associations participating in FedEx® Declared Value Advantage.

Q Is any shipper qualified for FedEx Declared Value Advantage?

A No. You must have a FedEx account and meet qualifications, based on the length of your relationship with FedEx. We also consider your claims, as well as loss and revenue history. Go to [Service coverage](#) for more information.

Q Do I have to use specific FedEx® expedited services to declare a higher value?

A Yes. But you have many options based on your timing needs and budget—from FedEx First Overnight®, to FedEx 2Day®, to FedEx International Economy®. View the list in the [Service coverage](#) section.

Q Which countries and territories can I export high-value jewelry to with FedEx?

A We offer FedEx Declared Value Advantage service from the U.S. to several countries and territories. Find locations in [International support](#).

Q Are there specific packaging requirements for FedEx Declared Value Advantage?

A Yes. Always ship in FedEx expedited boxes. FedEx also offers protective packaging specifically for high-value shipments, including the FedEx Security Box Kit and the FedEx Box with Safe Insert. Check out [Packing tips](#) and [Shipping best practices](#).

Q Do I have to use an approved drop off location?

A If you want to declare a value more than US\$1,000, you do have to use an approved location. The maximum declared value is US\$100,000 at any staffed FedEx Ship Center® and US\$2,500 at any staffed FedEx Office location other than those listed as approved high-value drop off locations. For a specific list, see [Drop off locations](#).

Q Does FedEx offer support to help me begin exporting jewelry?

A Yes. You can count on FedEx for information on Harmonized System codes, Commercial Invoices, and Electronic Export Information (otherwise known as Shipper's Export Declaration). For general guidance, visit [International support](#).

Q Can I combine FedEx One Rate® pricing with FedEx Declared Value Advantage benefits?

A No. FedEx One Rate isn't available for FedEx Declared Value Advantage program shipments.



Jewelry Shipping Program

Call for more information or to enroll

Are you a member of one of these participating jewelry associations? Ask them about shipping discounts and if you're eligible for the FedEx® Declared Value Advantage service.

American Gem Trade Association

1.800.972.1162

Diamond Dealers Club New York

1.212.790.3600

Jewelers of America

1.800.223.0673

MJSA Manufacturing Jewelers & Suppliers of America

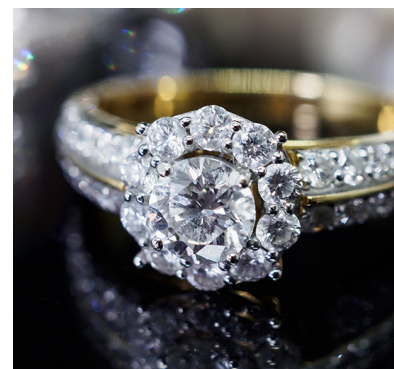
1.800.223.0673

NOT A MEMBER OF ONE OF THESE ORGANIZATIONS?

Call 1.866.504.9749 to ask about FedEx Declared Value Advantage shipping.

Learn more about [FedEx declared value](https://www.fedex.com/en-us/shipping/declared-value.html).⁹ To determine if you qualify for the FedEx Declared Value Advantage program, [please apply](https://www.fedex.com/en-us/shipping/high-value-jewelry-declared-value-form.html)¹⁰ by giving us some information about your company. Once you submit an application, a FedEx Declared Value Advantage representative will contact you to discuss program details and eligibility. For international assistance, call 1.800.GoFedEx (1.800.463.3339) and say "international services."

CONTACTS



⁹ <https://www.fedex.com/en-us/shipping/declared-value.html>

¹⁰ <https://www.fedex.com/en-us/shipping/high-value-jewelry-declared-value-form.html>