



# Technical What's New Guide



## Legal and Copyright Notices

### Payment

You must remit payment in accordance with the *FedEx Service Guide*, tariff, service agreement or other terms or instructions provided to you by FedEx from time to time. You may not withhold payment on any shipments because of equipment failure or for the failure of FedEx to repair or replace any equipment.

### Inaccurate Invoices

If you generate an inaccurate invoice, FedEx® may bill or refund to you the difference according to the *FedEx Service Guide*, tariff service agreement or other terms or instructions provided to you by FedEx from time to time. A request for refund on a FedEx shipment must be made in accordance with the applicable Service Guide or terms or instructions provided by FedEx from time to time. A shipment given to FedEx with incorrect information is not eligible for refund under any FedEx money-back guarantee. FedEx may suspend any applicable money-back guarantee in the event of equipment failure or if it becomes inoperative.

### Confidential and Proprietary

The information contained in this guide is confidential and proprietary to FedEx Corporate Services, Inc. and its affiliates (collectively "FedEx"). No part of this guide may be distributed or disclosed in any form to any third party without written permission of FedEx. This guide is provided to you and its use is subject to the terms and conditions of the FedEx Automation Agreement. The information in this document may be changed at any time without notice. Any conflict between this guide, the FedEx Automation Agreement and the *FedEx Service Guide* will be governed by the FedEx Automation Agreement and the *FedEx Service Guide*, in that order.

© 2014 - 2015 FedEx. FedEx and the FedEx logo are registered service marks. All rights reserved.

### Disclaimer

All Improper Transaction scenarios are for example only. They do not reflect all error condition scenarios.

## About This Document

The *FedEx Ship Manager<sup>®</sup> Server Technical What's New Guide* provides technical information about features in this release. It contains descriptions of new features, transactions and transaction fields that make up the new functionality and enhancements included in the software since the v 14.0.1 release.

This document is *not* intended for use as a coding reference or as a detailed technical specification of the new features. Details for all features described in this document are included in the *FedEx Ship Manager Server<sup>®</sup> Transaction Coding Reference Guide* and the *FedEx Ship Manager Server<sup>®</sup> Developer Guide*.

*Note: This document lists the data elements for this release of the FedEx Ship Manager Server. The information in this document is subject to change before the production release.*

## Audience

This document is intended for the following audiences.

- Shipper managers, users, or developers interested in obtaining FedEx Ship Manager Server
- Customer managers, users, or developers using FedEx Ship Manager Server for the first time
- Customer managers, users, or developers already using FedEx Ship Manager Server and wanting to learn about the new and enhanced features in this release
- Managers, users, or developers in third-party development organizations

## Conventions

This guide uses the following conventions in the text.

- Sample transaction code is formatted in `Courier New`.
- Important notices begin with the word "Note."
- In task instructions, software user interface elements are shown in bold.
- Names of documents are shown in *italics*.
- Names of FedEx Ship Manager Server transactions are shown in italics, as for example, the *020/120 Global Ship Request/Reply*.
- First occurrence of a term is *italicized* followed by a definition.
- Cross-references are in [purple](#).

## Resources

- *FedEx Ship Manager<sup>®</sup> Server Installation and Configuration Guide*
- *FedEx Ship Manager<sup>®</sup> Server Developer Guide*
- *FedEx Ship Manager<sup>®</sup> Server Technical What's New Guide*
- *FedEx Ship Manager<sup>®</sup> Server Transaction Coding Reference Guide*
- FedEx Service Guide available at [fedex.com/us/service-guide](https://fedex.com/us/service-guide)
- FedEx Services At-a-Glance: [fedex.com/us/services/atalgance.html](https://fedex.com/us/services/atalgance.html)
- FedEx Developer Resource Center: [fedex.com/developer](https://fedex.com/developer)

## Support

Support Type	Access	Prompt	Support Topics	Hours
Web	FedEx.com	NA	NA	NA
FedEx Technical Support	1.877.339.2774	FedEx Ship Manager Server	<ul style="list-style-type: none"> <li>• fedex.com</li> <li>• FedEx Ship Manager</li> <li>• FedEx Web Services</li> <li>• More options</li> </ul>	Monday to Friday CST 7 a.m. – 9 p.m.  Saturday CST 9 a.m. – 3 p.m.
FedEx Customer Service	1.800.463.3339	In a few words, please say what you are calling about.	<ul style="list-style-type: none"> <li>• Schedule a pick-up</li> <li>• I need shipping rates</li> <li>• Track a package</li> <li>• Find a FedEx location</li> <li>• More options</li> </ul>	24 hours a day, 7 days a week
FedEx Dangerous Goods	1.800.463.3339	Dangerous Goods/81	<ul style="list-style-type: none"> <li>• Schedule a dangerous goods or HazMat pick-up, ship alcohol or firearms, get rates or order supplies</li> <li>• Technical Support</li> <li>• International Dangerous Goods questions</li> <li>• Speak with a Dangerous Goods Representative</li> </ul>	Monday to Friday CST 7 a.m. – 7 p.m.  Saturday CST 10 a.m. – 2 p.m.

FedEx Ship Manager® Server installation is free. Contact a FedEx support representative if you wish to expand your current FSMS installation or want additional information.

## FedEx Service Guide

Within this guide, you may be asked to refer to the *FedEx Service Guide* for details about FedEx services, packaging, and other information. To view or download the U.S. guide, go to [fedex.com/us/service-guide](http://fedex.com/us/service-guide) and click the 'Download Now' option in the gray box on the left.

## FedEx Electronic Export Information Filing Options (United States only)

If you are a U.S. shipper and your U.S. export shipments require EEI filing (Electronic Export Information, formerly known as Shipper's Export Declaration, SED) go to <http://www.fedex.com/us/electronic-export-information/filing.html> for more information.

# 1. New or Enhanced Services

## 1.1 Recipient State/Province

When creating a return shipment, if the recipient state/province is absent, then FSMS does not default it to the state code (associated with the meter) unless the recipient country code matches the country code configured for the meter. And if the recipient state/province is present in the transaction, then FSMS does not override it with state code (associated with the meter), even if the country codes match.

### 1.1.1 Field Update

#### 1.1.1.1 Modified Field

Table 1. Recipient State/Province - Modified field

Field ID	Field Name	Update	Affected Transactions	Description
16	Recipient State	Added notes	<ul style="list-style-type: none"> <li>- 020 Global Ship Request</li> <li>- 060 Freight Create BOL Request</li> <li>- 037 Email Label Request</li> <li>- 025 Rate Available Service Request</li> </ul>	Added the following notes: - If Field ID 16 (Recipient State) is not present in the transaction when creating a Return Shipment, FSMS does not default it to the state code associated with the meter in the configuration screen unless, the recipient country code present in the transaction matches the country code configured for the meter. - If Field ID 16 (Recipient State) is present in the transaction when creating a Return Shipment, FSMS does not default or override it with the state code associated with the meter in the configuration screen even if the country codes match.

For more details, refer to Appendix A of the *FedEx Ship Manager® Server (FSMS) Transaction Coding Reference Guide*.

### 1.1.2 Error Codes

#### 1.1.2.1 Modified Error Code

Table 2. Recipient State/Province - Modified error code

Error Code	Error Message	Update
2764	This Pay Type is invalid for this type of shipment.	Added new error conditions and a note.

For more details, refer to Appendix D of the *FedEx Ship Manager® Server (FSMS) Transaction Coding Reference Guide*.

## 1.2 HazMat Form Update

The non-compliant OP900 and OP900B forms are no longer accessible and have been replaced with OP900LL HazMat form.

### 1.2.1 Field Update

#### 1.2.1.1 Modified Fields

Table 3. HazMat Form Update - Modified fields

Field ID	Field Name	Update	Affected Transactions	Description
1373	Report Code	Added note	<ul style="list-style-type: none"> <li>- 020 Global Ship Request</li> <li>- 070 Meter Query/Configuration Request</li> <li>- 095 Label Reprint Request</li> </ul>	Added the following note: FSMS ignores the value 060 - Ground OP900B if passed in the: - Global Ship transaction. - Meter Query/Configuration transaction. - Label Reprint transaction.
				Added the following note:

1981	Published Delivery Time	Removed field	- 020 Global Ship Reply - 025 Rate Available Service Reply	FSMS no longer returns Field ID1981 (Published Delivery Time) and its value in: - 120 reply of the Global Ship Transaction. - 125 reply of the Rate Available Services Transaction.
------	-------------------------	---------------	---	---

For more details, refer to Appendix A of the *FedEx Ship Manager® Server (FSMS) Transaction Coding Reference Guide*.

## 1.2.2 Error Codes

### 1.2.2.1 New Error Code

Table 4. HazMat Form Update - New error code

Error Code	Error Message	Update
5131	The OP900 DG Hazmat form is no longer compliant. Please use OP900LL form instead	New error code.

For more details, refer to Appendix D of the *FedEx Ship Manager® Server (FSMS) Transaction Coding Reference Guide*.

## 1.3 Sender Account on 'Cash Only' Status

When a customer tries to process a shipment, and if the sender account is set to 'cash only' status, then the customer cannot successfully complete the transaction.

### 1.3.1 Error Codes

#### 1.3.1.1 New Error Code

Table 5. Sender Account on 'Cash Only' Status - New error code

Error Code	Error Message	Update
2758	Shipping cannot continue. Please contact your FSMS representative for further information.	New error code.

For more details, refer to Appendix D of the *FedEx Ship Manager® Server (FSMS) Transaction Coding Reference Guide*.

## 2. Dangerous Goods

### 2.1 Net Explosive Mass (NEM)

For Class 1 explosive articles, the net quantity indicated for each package is supplemented with the Net Explosive Mass (NEM) contained in the package followed by the unit of measurement. The abbreviations NEQ, NEC, NEM or NEW may be indicated in association with the value provided.

#### 2.1.1 Field Update

FSMS provides new data elements that can be designated at shiptime with Class 1 Explosive commodities. The additional information is related to the NEM, which prints on the Shipper's Declaration as well. For all Class 1 DG commodities, the NEM fields are printed in the 'Nature and Quantity of Dangerous Goods' section of 1421C and the LZR DG DEC form.

##### 2.1.1.1 New Fields

Table 6. Net Explosive Mass (NEM) - New fields

Field ID	Field Name	Update	Affected Transactions	Description
1870	Net Explosive Mass Type/Abbreviation	New field	- 020/120 Global Shipping transaction	This field allows users to express the net amount of explosive material inside a Class 1 DG commodity, without any casings, etc.
1871	Net Explosive Mass Unit of Measure (UOM)	New field	- 020/120 Global Shipping transaction	This field specifies the units of measure associated with the Net Explosive Mass.
1872	Net Explosive Mass Amount	New field	- 020/120 Global Shipping transaction	This field specifies the amount of net explosive mass inside a Class 1 DG commodity, without any casings, etc.
4037	Dangerous Goods Commodity Quantity (High Precision)	New field	- 020/120 Global Shipping transaction	This field specifies the net quantity of the DG commodity being shipped with higher precision than the existing DG Commodity Quantity.

##### 2.1.1.2 Modified Fields

Table 7. Net Explosive Mass (NEM) - Modified

Field ID	Field Name	Update	Affected Transactions	Description
466	Dangerous Goods/HazMat Quantity	Added a new condition and notes	- 020/120 Global Shipping transaction	<p>Added the following condition:</p> <p>When a user attempts to ship a FedEx Express IATA Dangerous Goods commodity with something other than a Class 1 commodity and if the 3 NEM fields - Net Explosive Mass Type/Net Explosive Mass Abbreviation (1870), NEM UOM (Field 1871), and NEM Amount (Field 1872) are not passed in, and Field ID 4037 - DG Commodity Quantity (High Precision) and Field ID 466 DG Commodity Quantity are passed in with a valid amount, then Field ID 466 takes precedence and Field ID 4037 is ignored. No hard error is returned, and the transaction is successful.</p> <p>Added the following notes:</p> <ul style="list-style-type: none"> <li>- FSMS does not allow non-numeric entries, which include an actual decimal point for this field.</li> <li>- FSMS does not allow an amount or value to be entered/passed in or evaluated to zero for this field.</li> </ul>
	Dangerous			<p>Added the following condition:</p> <p>When this field and the NEM UOM (Field ID 1871) contain different values, then the original values passed in by the user for the following fields are printed on the LZR DG Shipper's Declaration or</p>

471	Goods/HazMat Unit of Measure (UOM)	Added a new condition	- 020 Global Ship Request	the 1421C DG Shipper's Dec: - DG Commodity Quantity (High Precision) - Field 4037 - DG UOM - Field 471 - NEM Amount - Field 1872 - NEM UOM - Field 1871.
-----	------------------------------------	-----------------------	---------------------------	--

For more details, refer to Appendix A of the *FedEx Ship Manager® Server (FSMS) Transaction Coding Reference Guide*.

## 2.1.2 Error Codes

### 2.1.2.1 New Error Codes

Table 8. New error codes

Error Code	Error Message	Update
3119	Net Explosive Mass information is required for Class 1 FedEx Express Dangerous Goods commodities. One or more of the Net Explosive Mass fields are missing, i.e. Net Explosive Mass Type and/or Net Explosive Mass Unit of Measure and/or Net Explosive Mass Amount,	New error code.
3120	The Dangerous Goods Commodity Quantity (High Precision) must be numeric and greater than zero.	New error code.
3121	Net Explosive Mass Type cannot be invalid or blank.	New error code.
3122	Net Explosive Mass Unit of Measure must be provided in g or kg.	New error code.
3123	Net Explosive Mass Amount must be numeric and greater than zero.	New error code.
3125	Net Explosive Mass Information is only allowed for Class 1 FedEx Express Dangerous Goods commodities.	New error code.
3128	Dangerous Goods Commodity Quantity (High Precision) is only allowed for Class 1 FedEx Express Dangerous Goods commodities.	New error code.
3129	The Net Explosive Mass Amount must be less than or equal to the quantity of the associated Dangerous Goods commodity.	New error code.
3130	Field 4037 has to be passed in for FedEx Express Dangerous Goods Class 1 commodities with Net Explosive Mass Information.	New error code.

For more details, refer to Appendix D of the *FedEx Ship Manager® Server (FSMS) Transaction Coding Reference Guide*.

## 2.2 Technical Name and Proper Shipping Name (PSN) Regulations

FSMS now allows users to:

- Add more words to the Proper Shipping Name (PSN).
- Enter global telephone numbers in fields pertaining to Dangerous Goods (DG).

FSMS supports the printing the qualifying words or their variations as part of the PSN in the first sequence of data in the 'Nature and Body of Dangerous Goods' section on the Dangerous Goods Shipper's Declaration or Pin Fed 1421C form.

Use Field 446 (Dangerous Goods Technical Name) to specify the technical name for any dangerous goods shipped using FedEx Express. The Technical name is the additional recognized chemical name or microbiological name currently used in scientific and technical handbooks, journals, and texts. Some Proper Shipping Names require a technical name to be included.

### 2.2.1 Technical Name and Proper Shipping Name

The following regulations are applied to installations with IATA Full Validation and to all FedEx Express service types that currently support Dangerous Goods shipping.

- When you enter a technical name in the Dangerous Goods Technical Name field (Field ID 446) for an Express DG Commodity with a UN ID that does not require a technical name, then FSMS returns the following error message:

*A Proper Shipping Name is not allowed in the Technical Name field. Ensure the name provided is an accurate chemical/technical name. If a technical name is not required, please remove the Technical Name field.*

Result: Transaction fails.



- When you enter a PSN in the Dangerous Goods Technical Name field for a UN ID that does/does not require a technical name, then FSMS returns the following warning message:

*A technical name is not required with this UN ID Number. Either ensure the name provided is an accurate chemical or technical name. If it is not, please remove the Technical Name. Do not duplicate the Proper Shipping Name in the Technical Name field.*

Result: Transaction processes.

## 2.2.2 PSN Qualifying Words

FSMS allows you to enter the following additional qualifying words at the end of the PSN (with a space in between the PSN and the qualifying word) when processing or validating an Express DG shipment.

- 'molten' and all variations of molten i.e., 'Molten', 'MOLTEN', etc.
- 'stabilized' and all variations of stabilized i.e., 'Stabilized', 'STABILIZED', etc.
- 'solution' or 'solutions' and all variations of solution.
- 'mixture' or 'mixtures' and all variations of mixture.

FSMS prints the qualifying words at the end of the PSN on the Express DG Shipper's Declaration. Addition of qualifying words is allowed for all UN IDs, except the following:

- A PSN that already contains the same qualifying words.
- All Class 5.2 organic peroxide (example UN ID 3110 'Organic peroxide type F, solid').
- All self-reactive materials that have a 4.1 label requirement and a 'keep away from heat' label requirement in the IATA table. These materials also have a special provision of A20 (example UN ID 3233 'Self-reactive liquid type C').

FSMS supports qualifying words with their corresponding variations in combination with PSN. The maximum number of valid combined qualifying words that could be supported for a given valid UN ID is three.

For example, PSN 'Paint' can be 'Paint solution molten stabilized' or 'Paint mixture molten stabilized' or 'Paint solutions molten stabilized' or 'Paint mixtures molten stabilized' in the PSN field 1903.

Table 9. PSN and Technical Name with Qualifying Words

UN ID	Proper Shipping Name	Technical Name	Qualifying Words	Exact Match Duplicate	Result	Comments
1378	Metal catalyst, wetted solution	Metal catalyst, wetted solution	Both PSN & Technical Name Contain Same Qualifying Word	Y	Hard Error	Exact Match from the PSN to the Technical Name.
1378	Metal catalyst, wetted solution	Metal catalyst, wetted solution	Only the PSN has a Qualifying Word, but the Technical Name does not have a qualifying word.	N	No Error	Shipment is Successful. Mis-spelling of the word 'catalyst' has occurred.
1378	Metal catalyst, wetted solution molten	Metal catalyst, wetted molten	PSN has 2 Qualifying Words and the Technical Name has only one Qualifying Word	N	No Error	Shipment is successful. Paint is a valid PSN for UN ID 1263, however, the UN ID for the DG commodity being shipped is UN 1378 & the PSN in the PSN field is valid with UN ID 1378.
1378	Metal catalyst, wetted	Metal catalyst, wetted solution	PSN has no Qualifying Words and Technical Name has 1 Qualifying Word	N	No Error	This is not considered an exact match.
1263	Paint Solution	Paint solution	Both PSN & Technical Name Contain Same Qualifying Word	Y	Warning as this UN ID does not require a technical name	This is not considered an exact match.
1263	Paint Solution	Paint	Only the PSN has a Qualifying Word, but the Technical Name does not have a qualifying word	N	No Error	This is not considered an exact match.
1263	Paint Solution Molten	Paint Molten	PSN has 2 Qualifying Words and the Technical Name has only one Qualifying Word	N	No Error	This is not considered an exact match.

1263	Paint	Paint Solution	PSN has no Qualifying Words and Technical Name has 1 Qualifying Word	N	No Error	This is not considered an exact match.
------	-------	----------------	--	---	----------	--

### 2.2.2.1 Reports

FSMS supports printing of the qualifying words or their variations as part of the PSN in the first sequence of data in the 'Nature and Body of Dangerous Goods' section on the Dangerous Goods Shipper's Declaration or Pin Fed 1421C form. See the following figure for details.

Figure 1. Dangerous Goods Shipper's Declaration Form

SHIPPER'S DECLARATION FOR DANGEROUS GOODS		(Provide at least two copies to the airline.)	
<b>Shipper</b> RAJ GRANDHI <b>Fedex</b> 7660 TECUMSEH RD E FARMINGTON HILLS, MI 48334 US		<b>Air Waybill No.</b> 653135234928 Page 1 of 1 Pages <b>Shipper's Reference Number</b> DG <i>(Optional)</i>	
<b>Consignee</b> Via 7625743 Syntel Federal Express COLLIERVILLE, TN 38017 US		FX 18 Compliant <h1 style="text-align: center;">FedEx</h1> <h2 style="text-align: center;">Express</h2> FXRS1500	
Two completed copies of this Declaration must be handed to the operator		<b>WARNING</b> Failure to comply with all respects with the applicable Dangerous Goods Regulations may be in breach of the applicable law, subject to legal penalties. This Declaration must not, in any circumstances, be completed and/or signed by a consolidator, a forwarder or an IATA cargo agent	
<b>TRANSPORT DETAILS</b>			
This shipment is within the limitations prescribed for: CARGO AIRCRAFT ONLY		<b>Airport of Departure:</b> FARMINGTON HILLS	
<b>Airport of Destination:</b> COLLIERVILLE XH		<b>Shipment Type:</b> NON-RADIOACTIVE	
<b>NATURE AND QUANTITY OF DANGEROUS GOODS</b> UN Number or Identification Number, Proper Shipping name, Class or Division (subsidiary risk), Packing Group (if required), and all other required information.			
UN1086, Vinyl chloride, stabilized, 2.1, //...1 YOUR PACKAGING X 0.15 kg // 200 //			

### 2.2.3 Globalization of DG Telephone Numbers

Dangerous Goods phone numbers—'Emergency Response Telephone Number' and 'Infectious Substance Responsible Party'—are modified for all Express shipments. FSMS requires a minimum of 1 and a maximum of 25 characters in the DG Emergency Telephone Number (Field ID 484) and DG Infectious Substance Telephone Number (Field ID 1921) for all Dangerous Goods shipments regardless of the country of origin for the meter. FSMS does not edit the maximum length if the customer enters more than 25 characters, but all data beyond 25 characters will be truncated when stored and printed.

Note: These characters allow for AKE - Any Keyboard Entry

Figure 2. DG Infectious Substance Responsible Party Telephone Number & Emergency Telephone Number

SHIPPER'S DECLARATION FOR DANGEROUS GOODS

(Provide at least two copies to the airline.)

Shipper MEMPHIS Fedex 7660 TECUMSEH RD E  FARMINGTON HILLS, MI 48334 US	Air Waybill No. 653135235096  Page 1 of 1 Pages Shipper's Reference Number (optional)						
Consignee  FEDEX RECIPIENT CONTACT GTMC TEST  Paris, TN 38017 US	FX 18 Compliant  <h1 style="text-align: center;">FedEx</h1> <h2 style="text-align: center;">Express</h2> FXRS1500						
<p>Two completed copies of this Declaration must be handed to the operator:</p> <table border="1" style="width: 100%;"> <tr> <th colspan="2" style="text-align: left;">TRANSPORT DETAILS</th> </tr> <tr> <td style="width: 50%;">                             This shipment is within the limitations prescribed for:                               PASSENGER AND CARGO AIRCRAFT                         </td> <td style="width: 50%;">                             Airport of Departure:                               FARMINGTON HILLS                         </td> </tr> <tr> <td colspan="2">                             Airport of Destination: Paris XH                         </td> </tr> </table>	TRANSPORT DETAILS		This shipment is within the limitations prescribed for:  PASSENGER AND CARGO AIRCRAFT	Airport of Departure:  FARMINGTON HILLS	Airport of Destination: Paris XH		<p><b>WARNING</b></p> <p>Failure to comply with all respects with the applicable Dangerous Goods Regulations may be in breach of the applicable law, subject to legal penalties. This Declaration must not, in any circumstances, be completed and/or signed by a consolidator, a forwarder or an IATA cargo agent</p> <p>Shipment Type: NON-RADIOACTIVE</p>
TRANSPORT DETAILS							
This shipment is within the limitations prescribed for:  PASSENGER AND CARGO AIRCRAFT	Airport of Departure:  FARMINGTON HILLS						
Airport of Destination: Paris XH							

30908129

**NATURE AND QUANTITY OF DANGEROUS GOODS**

UN Number or Identification Number, Proper Shipping name, Class or Division (subsidiary risk), Packing Group (if required), and all other required information.

UN0131, Lighters, fuse, 1.4S // 1 DG-material X 0.00100 kg, NEC X 0.00050 Kg // 142 //

-----  
**Additional Handling Information**

Emergency Telephone Number 9988776655

I hereby declare that the contents of this consignment are fully and accurately described above by the proper shipping name, and are classified, packaged, marked and labelled/placarded, and are in all respects in proper condition for transport according to applicable International and National Governmental Regulations. I declare that all of the applicable air transport requirements have been met

Name/Title of Signatory  
 FEDEX / Dangerous Goods  
 Place and Date  
 OFFICE 11/26/2014  
 Signature  
 FEDEX  
 (see marking above)

9988776655 emergency telephone number

FOR RADIOACTIVE MATERIAL SHIPMENT ACCEPTABLE FOR PASSENGER AIRCRAFT, THE SHIPMENT CONTAINS RADIOACTIVE MATERIAL EXCEPT FOR USE IN OR SUBJECT TO RESEARCH, MEDICAL DIAGNOSIS, OR TREATMENT

## 2.2.4 Field updates

### 2.2.4.1 Modified fields

Table 10. Technical Name and Proper Shipping Name (PSN) Regulations - Modified fields

Field ID	Field Name	Update	Affected Transactions	Description
466	Dangerous Goods/HazMat Quantity	Added a note	- 020/120 Global Shipping transaction	Added the following note to each field: FSMS does not allow an amount or value to be entered/passed in or evaluated to zero for this field.
1872	Net Explosive Mass Amount	Added a note	- 020/120 Global Shipping transaction	
1906	Dangerous Goods Activity	Added a note	- 020/120 Global Shipping transaction	
4037	Dangerous Goods Commodity Quantity (High Precision)	Added a note	- 020/120 Global Shipping transaction	

For more details, refer to Appendix A of the *FedEx Ship Manager® Server (FSMS) Transaction Coding Reference Guide*.

## 2.2.5 Error Codes

### 2.2.5.1 New Error Codes

Table 11. Technical Name and Proper Shipping Name (PSN) Regulations - New error codes

Error Code	Error Message	Update
3131	The Dangerous Goods Commodity Quantity must be numeric and greater than zero.	New error code.
3132	A Proper Shipping Name is not allowed in the Technical Name field. Ensure the name provided is an accurate chemical/technical name. If a Technical Name is not required, Technical Name field must be removed.	New error code.
3133	Duplication of the qualifying word, which also exists in the Proper Shipping Name is not allowed.	New error code.
3134	The qualifying word << qualifying word>> added to the Proper Shipping Name is not valid for use with this Proper Shipping Name.	New error code.
3135	The combination of <<qualifying word>> and << qualifying word>> as qualifying words added to the Proper Shipping is not allowed.	New error code.

For more details, refer to Appendix D of the *FedEx Ship Manager® Server (FSMS) Transaction Coding Reference Guide*.

## 3. Intra-Country Shipping

### 3.1 Domestic Canada FedEx Express Standard Overnight Service

Domestic Canada FedEx Express Standard Overnight service delivers non-freight shipments by 5pm the next business day (by 8pm if residential delivery is selected) with variable day commit. This service provides the same features, functionality, and business rules as the current Domestic Canada FedEx Express non-freight service.

Domestic Canada FedEx Express Standard Overnight service supports the following features:

- Billing Options
  - Bill Sender
  - Bill Recipient
  - Bill Third Party
- Returns
  - Print Return
  - Email Label functionality
- Special Handling Options
  - Hold at Location
  - Saturday Pick-up
  - Dry Ice
  - Residential Delivery
  - Dangerous Goods (ADG & IDG)

*Note: Hold at Location (HAL) is offered based on the ability to support HAL at the destination location.*

- Multiple Piece Shipments (MPS)
- Ship Alerts
- Reports
- Doc Tab functionality
- Configurable References
- Custom Label

#### 3.1.1 Field Updates

##### 3.1.1.1 Modified Fields

Table 12. Domestic Canada FedEx Express Standard Overnight Service - Modified fields

Field ID	Field Name	Update	Affected Transactions	Description
1274	Service Type	Added a condition and a note related to a new service	- 020/120 Global Shipping transaction	Added the following condition and note: When a user attempts to process an intra-Canada Standard Overnight shipment via the 020 shipping transaction and has included Residential Delivery and Hold at Location, and if the following field values are passed: <ul style="list-style-type: none"> <li>• Field ID 1274 (Service Type) is set to '01' (FedEx Priority Overnight), '05' (FedEx Standard Overnight), '20' (FedEx Economy), '03' (FedEx 2-Day), or '70' (FedEx 1Day Freight)</li> <li>• Field ID 1200 (Hold at Location Flag) is set to 'Y'</li> <li>• Field ID 440 (Residential Delivery Flag) is set to 'Y'</li> </ul> then, Residential Delivery Flag is ignored and Hold at Location takes precedence and the transaction succeeds. Note:

Within the 020/120 Global Shipping transaction, FSMS allows Field ID 1274 (Service Type) to be passed in with the following value for an intra-Canada shipment:

- 05 - Standard Overnight.

For more details, refer to Appendix A of the *FedEx Ship Manager® Server (FSMS) Transaction Coding Reference Guide*.

## 3.1.2 Error Codes

### 3.1.2.1 Modified Error Codes

Table 13. Domestic Canada FedEx Express Standard Overnight Service - Modified error codes

Error Code	Error Message	Update
0230	Invalid service type.	Added an error condition.
0270	The weight limit for this service type has been exceeded.	Added multiple error conditions.
0421	Length & girth combined cannot be greater than the maximum allowed.	Added an error condition.
0422	Length cannot be greater than the maximum allowed.	Added an error condition.
2025	Width cannot be greater than the maximum allowed.	Added an error condition.
2080	Service not allowed with Priority Alert.	Added an error condition.
2083	Height cannot be greater than the maximum allowed.	Added an error condition.

For more details, refer to Appendix D of the *FedEx Ship Manager® Server (FSMS) Transaction Coding Reference Guide*.

## 3.2 Language Translations

FSMS supports language translations for the following:

- Email Notifications (Merchant Notification and Return Shipper Notification).
  - When the Email Return notifications are requested in a different language, Field ID 5575 (Merchant Notification E-Mail Language) and Field ID 5587 (Return Shipper Notification Language) are supported.
- Ship Alerts (Shipment Created, Shipment Tendered, Shipment Exceptions, and Shipment Delivery).
- Print Return Instructions.

FSMS now supports the following additional languages:

- ar - Arabic
- cz - Czech
- fi - Finnish
- hu - Hungarian
- no - Norwegian
- pl - Polish
- ru - Russian
- tr - Turkish

### 3.2.1 Field Update

#### 3.2.1.1 Modified Fields

Table 14. Language Translations - Modified fields

Field ID	Field Name	Update	Affected Transactions	Description
----------	------------	--------	-----------------------	-------------

5575	Merchant Notification E-Mail Language	Added new language codes	- 020 Global Ship Request - 037/137 Email Label Request	Added new language codes: ar — Arabic, fi — Finnish, hu — Hungarian, no — Norwegian, ru — Russian, tr — Turkish.
5587	Return Shipper Notification Language	Added new language codes	- 020 Global Ship Request - 037/137 Email Label Request	Added new language codes: ar — Arabic, fi — Finnish, hu — Hungarian, no — Norwegian, ru — Russian, tr — Turkish.
1552	Other Language Code	Added new language codes	- 020 Global Ship Request - 060 Freight Create BOL Request - 037/137 Email Label Request	Added new language codes: ar — Arabic, cz — Czech, fi — Finnish, hu — Hungarian, no — Norwegian, pl — Polish, ru — Russian, tr — Turkish.
1555	Shipper Language Code	Added new language codes	- 020 Global Ship Request - 060 Freight Create BOL Request - 037/137 Email Label Request	Added new language codes: ar — Arabic, cz — Czech, fi — Finnish, hu — Hungarian, no — Norwegian, pl — Polish, ru — Russian, tr — Turkish.
1558	Recipient Language Code	Added new language codes	- 020 Global Ship Request - 060 Freight Create BOL Request - 037/137 Email Label Request	Added new language codes: ar — Arabic, cz — Czech, fi — Finnish, hu — Hungarian, no — Norwegian, pl — Polish, ru — Russian, tr — Turkish.
1561	Broker Language Code	Added new language codes	- 020 Global Ship Request - 060 Freight Create BOL Request - 037/137 Email Label Request	Added new language codes: ar — Arabic, cz — Czech, fi — Finnish, hu — Hungarian, no — Norwegian, pl — Polish, ru — Russian, tr — Turkish.
5546	Return Instructions Language Code	Added new language codes	- 020 Global Ship Request - 037/137 Email Label Request	Added new language codes: ar — Arabic, fi — Finnish, hu — Hungarian, no — Norwegian, ru — Russian, tr — Turkish.

For more details, refer to Appendix A of the *FedEx Ship Manager® Server (FSMS) Transaction Coding Reference Guide*.

## 4. International Shipping

### 4.1 Currency Conversion

Currency conversion functionality ensures:

- Your data is processed using actual currency rates
- You do not pay for a service not offered by FedEx (e.g., insuring shipments valued above the maximum allowed declared value)
- Actual invoice values are not vastly different from the courtesy rate quote provided, and
- Surcharge is not assessed on the wrong currency.

FSMS performs a currency conversion:

- Before determining whether the maximum allowed value has been exceeded when the currency provided by you does not match the maximum declared value (carriage value)
- Before calculating the declared value surcharge, when the currency provided by you does not match the billing currency

*Note: This is not applicable in case of CA to US shipments.*

This is applicable for FedEx Express and FedEx Ground for the following shipping services:

- International services
- Intra-country services
- International and Intra Country Return Scenarios (only for the declared value edit)
- Trans-border distribution services.

For more details, refer to the *FedEx Ship Manager® Server (FSMS) Developer Guide*.

#### 4.1.1 Field Updates

##### 4.1.1.1 Modified Fields

Table 15. Currency Conversion - Modified fields

Field ID	Field Name	Update	Affected Transactions	Description
1090	Declared Value/Rate Currency Type	Added a note and updated condition	<ul style="list-style-type: none"> <li>- 020/120 Global Shipping transaction</li> <li>- 025/125 Rate Available Services transactions</li> </ul>	<p>Added the following condition: When a user attempts to get a rate via the 020 Global Shipping transaction and has passed in all required and optional rating data, and if the user's rating currency code is different from the Declared Value/Rate Currency Type (Field 1090), then FSMS converts the Declared Value amount in field 69 from the Currency in field1090 to the currency of user's rating currency.</p> <p>Added the following note: <i>FSMS populates the actual currency used to rate the shipment in this field, in the Global Shipping Reply.</i></p>

For more details, refer to Appendix A of the *FedEx Ship Manager® Server (FSMS) Transaction Coding Reference Guide*.

#### 4.1.2 Error Codes

##### 4.1.2.1 New Error Code

Table 16. Currency Conversion - New error codes

Error Code	Error Message	Update
5126	The maximum declared value for shipment carriage is limited to [Declared value limit amount] [Currency Code ]. The value of the shipment should not exceed the declared value amount.	New error code.

##### 4.1.2.2 Modified Error Codes



Table 17. Currency Conversion - Modified error codes

Error Code	Error Message	Update
0318	The declared value limit for this service type has been exceeded.	Added multiple error conditions.
2238	FedEx Ship Manager is unable to rate your Shipment at this time.	Added multiple error conditions.
2253	The limit for Declared Value has been exceeded.	Added multiple error conditions.
2937	Declared value exceeds amount allowed for this country.	Added multiple error conditions.

For more details, refer to Appendix D of the *FedEx Ship Manager® Server (FSMS) Transaction Coding Reference Guide*.

## 4.2 Destination Control Statement (DCS)

The DCS is required by the United States Department of State (DOS) on certain international shipments. DCS for U.S. exports controlled by the U.S. Department of State should now read as:

*“These commodities are authorized by the U.S. Government for export only to <country of ultimate destination> for use by <end user> under <license or other approval number or exemption citation>. They may not be resold, diverted, transferred, or otherwise be disposed of, to any other country or to any person other than the authorized end-user or consignee(s), either in their original form or after being incorporated into other end-items, without first obtaining approval from the U.S. Department of State or use of an applicable exemption.”*

*Note: The above statement should be used on the international shipping label, Commercial Invoice, Proforma Invoice and any other shipping document that supports this statement.*

The DCS needs to be updated on Shipping Labels and UCI/UIP to comply with DOS changes. This will include:

- Text changes to the statement
- Populating the statement with the license number provided by the shipper
- Text table placed on the Shipping Labels and the UCI/UIP where specified

### 4.2.1 Field Update

#### 4.2.1.1 Modified Fields

Table 18. Destination Control Statement (DCS) - Modified fields

Field ID	Field Name	Update	Affected Transactions	Description
601	ITAR License/Exemption Number	Added note	- 020 Global Ship Request	Added the following note: This field is used to complete the updated Department Of State (DOS) DCS statement. The updated DOS DCS statement is included in the airwaybill label via this field ID.
3125	DCS Type - Destination Control Statement Print Type	Added conditions	- 020 Global Ship Request	Added the following conditions: <ul style="list-style-type: none"> <li>• When the International 020 transaction is submitted for a non-ITAR shipment and the shipper selects Shipment Documentation Flag (Field 2404) with the first position set to 'Y' for the Commercial Invoice or the second position set to 'Y' for the Proforma to print, and DCS Type-Destination Control Statement Print Type (Field 3125) is set to value 2 or 3, then the DOS DCS statement prints. However, since no ITAR License/Exemption Number is provided, the 'license or other approval number or exemption citation' section will be an underlined blank space of approximately 20 characters long.</li> <li>• When the International 020 transaction is submitted for a non-ITAR shipment and the shipper selects Shipment Documentation Flag (Field 2404) with the second position set to 'Y' for the PROFORMA to print and DCS Type - Destination Control Statement Print Type (Field 3125) set to value 3, then the new DOS DCS statement will print.</li> </ul>
2404	Shipment Documentation Flag	Added conditions	- 020 Global Ship Request	Added the following conditions: <ul style="list-style-type: none"> <li>• When the International 020 transaction is submitted for a non-ITAR shipment and the shipper selects Shipment Documentation Flag (Field 2404) with the first position set to 'Y' for the Commercial Invoice or the second position set to 'Y' for the Proforma to print, and DCS Type-Destination Control Statement Print Type (Field 3125) is set to value 2 or 3, then the DOS DCS statement prints. However, since no ITAR License/Exemption Number is provided, the 'license or other approval number or exemption citation' section will be an underlined blank space</li> </ul>

				<p>of approximately 20 characters long.</p> <ul style="list-style-type: none"> <li>When the International 020 transaction is submitted for a non-ITAR shipment and the shipper selects Shipment Documentation Flag (Field 2404) with the second position set to 'Y' for the PROFORMA to print and DCS Type - Destination Control Statement Print Type (Field 3125) set to value 3, then the new DOS DCS statement will print.</li> </ul>
--	--	--	--	--

For more details, refer to Appendix A of the *FedEx Ship Manager® Server (FSMS) Transaction Coding Reference Guide*.

## 4.3 Signature Options Expansion

The expanded Signature Options offer customers the flexibility and convenience for international letters and packages. The following Signature Options are now available to select international locations.

Table 19. Signature options

Option	Service Description	Restrictions	Special Fees
Indirect Signature Required	Any person at the recipient's address may sign for delivery. If no one is at the address, FedEx reattempts delivery.	Not available for shipments to non-residential addresses.	A surcharge may apply.
Direct Signature Required	FedEx obtains a signature in one of three ways: <ul style="list-style-type: none"> <li>From someone at the delivery address.</li> <li>From a neighbor, building manager or other person at a neighboring address.</li> <li>The recipient can authorize release of the package without anyone present.</li> </ul>	Available to select countries.	A surcharge may apply.
Adult Signature Required	FedEx will obtain a signature from someone at the delivery address who is at least the age of majority in the destination country.	Available to select countries.	A surcharge may apply.
No Signature Required	FedEx may release the package without anyone present.	Available to select countries.	NA

Note: For more detailed information about the services offered by FedEx including surcharges, see the [fedex.com/us/service-guide](https://www.fedex.com/us/service-guide).

### 4.3.1 Rating

Expanded Signature Options are applicable for all rating methods supported within the 020 Global Shipping transaction and 025 Rate All Services transaction.

- Field ID 1234 "Rate, Route, & Time In Transit" = 1 (Rate quote) via the 020 and 025 transactions.
- Field ID 1234 "Rate, Route, & Time In Transit" = 3 (Rate quote and Route) via the 020 or 025 transactions.
- Field ID 541 "Open Ship Flags" position 3 set to Y = NNYNNNNNN (Rate) via the 020 transaction.

## Routing

If a signature option surcharge is returned, FSMS uses the existing fields to return the following in the 120 Global Shipping Reply transaction and/or 125 Rate All Services Reply transaction.

Table 20. Regular Surcharge Return for FSMS

Regular Surcharge Return for FSMS	
Field ID	Signature Service Option Fee
2400	Signature Options Fee
2401	List Signature Options Fee
2898	Alternate Signature Options Fee

Or

Table 21. Dynamic Surcharge Return for FSMS

Dynamic Surcharge Return for FSMS	

Field ID	Surcharge Code Fields with Signature Service Option Fee Code
1945	List Dynamic Surcharge Code = 350
1947	Dynamic Surcharge Code = 350
2848	Alternate Dynamic Surcharge Code = 350

Expanded Signature Options are applicable for all routing methods supported within the 020 Global Shipping Transaction.

- Field ID 1234 "Rate, Route, & Time In Transit" = 2 (Route/Time In Transit)
- Field ID 1234 "Rate, Route, & Time In Transit" = 3 (Rate quote and Route)
- Field ID 541 "Open Ship Flags" position 2 set to Y = NYNNNNNNN (Route/Time In Transit)

### 4.3.3 Field Update

#### 4.3.3.1 Modified Fields

Table 22. Signature Options Expansion - Modified fields

Field ID	Field Name	Update	Affected Transactions	Description
440	Residential Delivery Flag	Added a new option -INTL- under 'Valid For' column	020 Global Shipping transaction	This field now supports International Shipping.
2399	Signature Required Type	Updated Valid value definitions for 0 and 1	020/120 Global Shipping transaction	Value definitions changed for the following: 0 — None Specified 1 — No Signature Required.

For more details, refer to Appendix A of the *FedEx Ship Manager® Server (FSMS) Transaction Coding Reference Guide*.

### 4.3.4 Error Codes

#### 4.3.4.1 Modified Error Code

Table 23. Signature Options Expansion - Modified error code

Error Code	Error Message	Update
2806	Priority Alert is not allowed in combination with a Multi-Ply Paper AirWayBill format	Added an error condition.

For more details, refer to Appendix D of the *FedEx Ship Manager® Server (FSMS) Transaction Coding Reference Guide*.

## 4.4 Country of Manufacture

'Multiple countries' (country code XX) is no longer accepted as a valid entry in the Country of Commodity Manufacture (COCM) drop down. In addition, transactional-based products return an error if XX is selected, resulting in transaction failure.

### 4.4.1 Error Codes

#### 4.4.1.1 New Error Codes

Table 24. Country of Manufacture - New error code

Error Code	Error Message	Update
2585	XX is not valid for Country of Manufacture, a valid Country Code is now required	Updated error message and error condition.

For more details, refer to Appendix D of the *FedEx Ship Manager® Server (FSMS) Transaction Coding Reference Guide*.

## 4.5 Return Address Country Code

### 4.5.1 Field Update

#### 4.5.1.1 Modified Fields

Table 25. Return Address Country Code - Modified fields

Field ID	Field Name	Update	Affected Transactions	Description
----------	------------	--------	-----------------------	-------------

Field ID	Field Name	Update	Affected Transactions	Description
1585	Return Country Code	Added a note	020 Global Ship Request	Added the following note: For International Ground, the Return Address Country code passed in field 1585 must match the destination/recipient country code passed in field 50.

For more details, refer to Appendix D of the *FedEx Ship Manager® Server (FSMS) Transaction Coding Reference Guide*.

## 5. Label Changes

### 5.1 Label Customization

Label Customization allow customers to create customized labels for their business, without modifying the required layout. Customers can generate a fully customized non-shipping label, build on the existing validator concept, and expand this customization to all doc-tabs regardless of the label stock size.

This feature also enables customers to add images to their non-shipping/validator labels just as they can add images to their shipping labels, allowing the user to identify the custom content, its location on the label, and its format. Text, graphics, barcodes, and boxes around the text can be specified for printing on the custom label.

Custom non-shipping labels are supported for the following thermal label formats:

- STOCK\_4X6
- STOCK\_4X6.75\_LEADING\_DOC\_TAB
- STOCK\_4X6.75\_TRAILING\_DOC\_TAB
- STOCK\_4X8
- STOCK\_4X9\_LEADING\_DOC\_TAB
- STOCK\_4X9\_TRAILING\_DOC\_TAB

#### 5.1.1 Field Update

##### 5.1.1.1 New Field

Table 26. Label Customization - New field

Field ID	Field Name	Update	Affected Transactions	Description
2833	Doc-Tab Customization	All required field data updates	- 020 Global Shipping transaction - 060/160 Freight Create BOL transaction	This field indicates that the Service Type and Tracking Number do not automatically print on the Doc Tab. The particulars are printed, by default, depending on the customization options selected.

##### 5.1.1.2 Modified Fields

Table 27. Label Customization - Modified field

Field ID	Field Name	Update	Affected Transactions	Description
2429	Custom Label Type Indicator	Added a new valid value (05 Message) and a note	- 020 Global Shipping transaction	Added the following note: When creating the 2" customizable section on the shipping label and when creating the Doc Tab, Field IDs 2430, 2431, 2432, 2433, 2434, 2437, 2438 should be passed when '05 — Message' is present in the transaction.
2431	Custom Label Y Position	Added a note	- 020 Global Shipping transaction	Removed the following from field description: Valid values are: non-negative integers only.
2432	Text String	Updated field length to 400	- 020 Global Shipping transaction	Added the following note: When the new value 05-Message is entered, the text wraps within a box. Otherwise, it gets truncated.
2438	Ending Y	Added a note	- 020 Global Shipping transaction	Removed the following from field description: Valid values are: non-negative integers only.

For more details, refer to Appendix A of the *FedEx Ship Manager® Server (FSMS) Transaction Coding Reference Guide*.

## 5.2 FedEx SmartPost Labels

## 5.2.1 Secondary Barcode Type

FedEx SmartPost (FXSP) offers effective label design options and lets you choose what to print (customer reference, 2D or blank space) in the secondary barcode space on the label. You can also request ground tracking number by enabling the 'Generate Ground Tracking Number' check box.

*Note: The ground tracking number, if enabled, will be included in your shipment transactions, but will not be included in the SmartPost shipping label.*

FSMS supports Secondary Barcode Type (field ID 9913) within the 020/120 Global Ship request/reply and 070/170 Meter Query/Configuration transactions. This feature enables customers to indicate what to print in the secondary barcode space on the label (customer reference, 2D or blank space). The customer can request a Ground tracking number, even if the SmartPost Standard Label is used (which does not include the Ground tracking number). The following lists the new and updated fields for FedEx SmartPost Labels. Refer to the *FedEx Ship Manager® Server (FSMS) Transaction Coding Reference Guide* for more information.

Field 9913 corresponds to the following Secondary Barcode drop down list box occurrences:

- FedEx Configuration screen>SmartPost Settings tab>SmartPost Options section.
- FedEx Configuration screen>SmartPost Settings tab>SmartPost Returns section.

For more details on configuration utility update, refer to *FedEx Ship Manager® Server Installation and Configuration Guide*.

*Note: For SmartPost Outbound shipment, if Customer Reference information is not provided, then the 2D barcode is printed. For SmartPost print return shipments, the customer reference barcode is not supported due to the existence of RMA barcode.*

### 5.2.1.1 Field Update

#### 5.2.1.1.1 New Field

Table 28. Secondary Barcode Type - New field

Field ID	Field Name	Update	Affected Transactions	Description
9913	Secondary Barcode Type	New field	- 020 Global Shipping transaction - 070/170 Meter Query or Configuration transaction	This field determines whether a secondary barcode is printed on all SmartPost labels. The secondary barcode would be a SmartPost 2D barcode, unless a customer reference is provided, in which case the secondary barcode would be a customer reference barcode.

For more details, refer to Appendix A of the *FedEx Ship Manager® Server (FSMS) Transaction Coding Reference Guide*.

### 5.2.1.2 Error Codes

#### 5.2.1.2.1 New Error Code

Table 29. Secondary Barcode Type - New error code

Error Code	Error Message	Update
5129	If the FedEx SmartPost® automation is not configured correctly, then an error message is returned to the user	New error code.

See [6.2.2 SmartPost Returns](#) for further updates.

For more details, refer to Appendix D of the *FedEx Ship Manager® Server (FSMS) Transaction Coding Reference Guide*.

## 5.2.2 Ground Manifest Report

When generating a Ground Manifest Report, if the data printed is for a SmartPost Small Shipper shipment, FSMS prints the SmartPost/USPS Tracking Number rather than the Ground Tracking Number.

*Note: The SmartPost/USPS Tracking Number is the 22-digit tracking number that includes the 2-digit application ID plus the 20-digit unique tracking number.*

For more details, refer to Appendix A of the *FedEx Ship Manager® Server (FSMS) Transaction Coding Reference Guide*.

## 6. Software Configuration Updates

### 6.1 Windows Support

FSMS installs and operates in the following additional versions of Microsoft's Windows operating system:

- Windows 8
- Windows 8.1
- Windows 8 Pro
- Windows 8.1 Pro
- Windows 8 Enterprise
- Windows 8.1 Enterprise
- Windows Server 2012 (Standard Edition)
- Windows Server 2012 R2 (Standard Edition)

*Note: Operating system support includes any updates or service packs provided by Microsoft.*

For more details, refer to the *FedEx Ship Manager® Server (FSMS) Installation and Configuration Guide*.

### 6.2 SmartPost Settings Tab

Following are the updates made to Configuration Screen> SmartPost Settings tab:

#### 6.2.1 SmartPost Options

A new check box 'Generate Ground Tracking Number' and a new drop-down list 'Secondary Barcode' for outbound shipments have been added.

##### 6.2.1.1 Generate Ground Tracking Number

FedEx SmartPost (FXSP) offers effective label design options and lets you choose what to print (customer reference, 2D or blank space) in the secondary barcode space on the label. You can also request ground tracking number by enabling the 'Generate Ground Tracking Number' check box.

- For new installations or clean load of software, the 'Generate Ground Tracking Number' check box is defaulted to unchecked.
- When upgrading from CD or delta from a version that does not support SmartPost Label changes the 'Generate Ground Tracking Number' check box is unchecked. While upgrading from a version that supports SmartPost Label changes, the setting of the 'Generate Ground Tracking Number' check box at the time of upgrade is carried over.

##### 6.2.1.2 Secondary Barcode for Outbound Shipments

FSMS supports Secondary Barcode Type (field ID 9913) within the 020/120 Global Ship request/reply and 070/170 Meter Query/Configuration transactions. See *FedEx Ship Manager® Server (FSMS) Transaction Coding Reference Guide* for more information on this field.

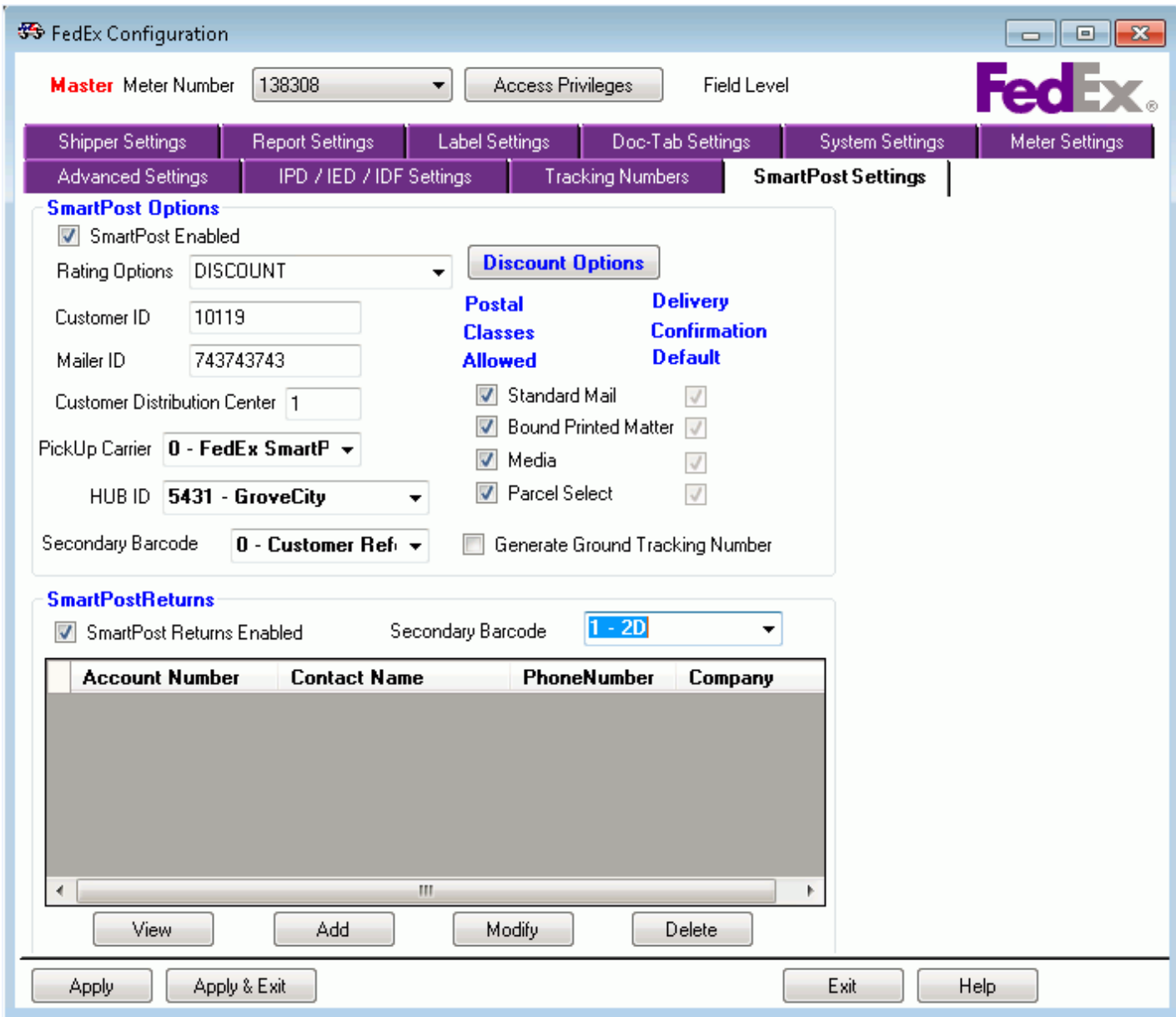
This field corresponds to the following Secondary Barcode drop down listbox occurrences.

- FedEx Configuration screen>SmartPost Settings tab>SmartPost Options section.
- FedEx Configuration screen>SmartPost Settings tab>SmartPost Returns section.

*Note: For SmartPost Outbound shipment, if Customer Reference information is not provided, then the 2D barcode is printed. For SmartPost print return shipments, the customer reference barcode is not supported due to the existence of RMA barcode.*

For more details on configuration utility update, refer to the *FedEx Ship Manager® Server (FSMS) Installation and Configuration Guide*.

Figure 3. SmartPost SettingsTab with SmartPost Returns Enabled Checkbox



- The values of this drop-down are: 'Customer Reference', '2D', and 'Blank' and the default value is 'Customer Reference'.
- The initial value of this drop-down when the meter is configured (via 035/135 Child Meter Registration transaction or the Meter Registration utility) is 'Customer Reference'.
- For new installations or clean load of software, the 'Secondary Barcode' drop-down is defaulted to 'Customer Reference'.
- When upgrading from CD or delta from a version that does not support SmartPost Label changes, the 'Secondary Barcode' drop-down on the SmartPost Settings tab is defaulted to 'Customer Reference'. While upgrading from a version that supports SmartPost Label changes, the option of the 'Secondary Barcode' drop-down on the SmartPost Settings tab at the time of upgrade is carried over.

For more details on configuration utility update, refer to the *FedEx Ship Manager® Server (FSMS) Installation and Configuration Guide*.

## 6.2.2 SmartPost Returns

Figure 4. FedEx SmartPost Configuration Settings on SmartPost Settings Tab



- The values of this drop-down are: '2D' and 'Blank' and the default is '2D'.
- The initial value of this drop-down when the meter is configured (via 035/135 Child Meter Registration transaction or the Meter Registration utility) is '2D'.
- For new installations or clean load of software, the 'Secondary Barcode' drop-down will be defaulted to '2D'.
- When upgrading from CD or delta from a version that does not support SmartPost Label changes the 'Secondary Barcode' drop-down will be defaulted to '2D'. While upgrading from a version that supports SmartPost Label changes, the option of the 'Secondary Barcode' drop-down on the SmartPost Settings tab at the time of upgrade is carried over.

For more details, refer to the *FedEx Ship Manager® Server (FSMS) Installation and Configuration Guide*.

## 6.3 On-Demand Rate Query

The messaging utility supports On-Demand Rate Query, which utilizes the rating service to determine the status of the rate files. It provides the capability to check on demand, the start date, end date, status (expired, pending, missing, active or corrupted) of current and future rate files.

### Notes:

- More complex the request, longer it takes to query the rate files. If this query is submitted during heavy shipping transaction, the shipping performance could be affected.
- The end date '20701231' is returned in the On-Demand Rate Query for data files that do not support an expiry date.

The table below provides the corresponding demand download check boxes that are used to resolve any rate component warnings:

Table 30. On-Demand Rate Query

FSMS Service Name Code	Demand Download Description	Demand Download Check Boxes
41	Express Domestic Rates	Express Domestic Rates/Discounts
42	Express International Rates	Express International Rates/Discounts
43	Express Bonus/Earned Rates	Express Bonus/Earned Discounts
44	Ground Rates	Ground Earned/Discount Rates
45	Ground Earned/Discount Rates	Ground Earned/Discount Rates
46	SmartPost Rates	SmartPost Rates
47	SmartPost Earned Discount Rates	SmartPost Earned Discount Rates
48	ODA/ OPA	ODA/OPA
49	EU Postal Surcharge	EU Postal Surcharge
53	Future Express Domestic Rates	N/A
54	Future Express International Rates	N/A
55	Future EU Postal Surcharge	N/A

## 6.3.1 Field Update

### 6.3.1.1 New Fields

Table 31. On-Demand Rate Query - New fields

Field ID	Field Name	Update	Affected Transactions	Description
1380	Component Start Date	New field	- 158 System Query Reply	<p>This field specifies rating component file's first effective date used for shipping and or rating. Date format is YYYYMMDD. This field is only supported with the 158 Reply transaction.</p> <p>The fields below are the returned elements for the 158 output transaction for query rate components for their current status.</p> <ul style="list-style-type: none"> <li>• Transaction Code (0)</li> <li>• Customer Transaction Identifier (1)</li> <li>• Sender FedEx Express Account Number (10)</li> <li>• Meter Number (498)</li> <li>• Message Type (557)</li> <li>• Message Code (558)</li> <li>• Message Text (559)</li> <li>• Severity (579)</li> <li>• FSMS Service Name (577)</li> <li>• Component Start Date (1380)</li> <li>• Component End Date (1381)</li> </ul>

				<p>Component Status (1382)</p> <ul style="list-style-type: none"> <li>• End of Record Indicator (99)</li> </ul> <p>Note: Return date information should be in the following format: YYYYMMDD</p>
1381	Component End Date	New field	- 158 System Query Reply	<p>This field specifies rating component file's last effective date used for shipping and/or rating. Date format is YYYYMMDD. This field is only supported with the 158 Reply transaction.</p> <p>The fields below are the returned elements for the 158 output transaction for query rate components for their current status.</p> <ul style="list-style-type: none"> <li>• Transaction Code (0)</li> <li>• Customer Transaction Identifier (1)</li> <li>• Sender FedEx Express Account Number (10)</li> <li>• Meter Number (498)</li> <li>• Message Type (557)</li> <li>• Message Code (558)</li> <li>• Message Text (559)</li> <li>• Severity (579)</li> <li>• FSMS Service Name (577)</li> <li>• Component Start Date (1380)</li> <li>• Component End Date (1381)</li> <li>• Component Status (1382)</li> <li>• End of Record Indicator (99)</li> </ul> <p>Note: Return date information should be in the following format: YYYYMMDD</p>
1382	Component Status	New field	- 158 System Query Reply	<p>This field provides the current status of the rate component file' present for defined meter and account number. This field is only supported with the 158 reply transaction.</p> <p>The fields below are the returned elements for the 158 output transaction for query rate components for their current status.</p> <ul style="list-style-type: none"> <li>• Transaction Code (0)</li> <li>• Customer Transaction Identifier (1)</li> <li>• Sender FedEx Express Account Number (10)</li> <li>• Meter Number (498)</li> <li>• Message Type (557)</li> <li>• Message Code (558)</li> <li>• Message Text (559)</li> <li>• Severity (579)</li> <li>• FSMS Service Name (577)</li> <li>• Component Start Date (1380)</li> <li>• Component End Date (1381)</li> <li>• Component Status (1382)</li> <li>• End of Record Indicator (99)</li> </ul>

### 6.3.1.2 Modified Fields

Table 32. On-Demand Rate Query - Modified fields

Field ID	Field Name	Update	Affected Transactions	Description
0	Transaction Code	Added a note	- 058 System Query Request	<p>Added the following note:</p> <p>Field IDs 0, 1, 10, 2413, 577, and 99 are recommended elements for the 058 input transaction to query rate components for their current status.</p>

1	Customer Transaction Identifier	Added a note.	- 058 System Query Request	Added the following note: Field IDs 0, 1, 10, 2413, 577, and 99 are recommended elements for the 058 input transaction to query rate components for their current status.
10	Sender FedEx Express Account Number	Added a note.	- 058 System Query Request - 158 System Query Reply	Added the following note: Field IDs 0, 1, 10, 2413, 577, and 99 are recommended elements for the 058 input transaction to query rate components for their current status.
99	End of Record Indicator	Added a note.	- 058 System Query Request - 158 System Query Reply	Added the following note: Field IDs 0, 1, 10, 2413, 577, and 99 are recommended elements for the 058 input transaction to query rate components for their current status.
498	Meter Number	Updated condition and added a note	- 058 System Query Request - 158 System Query Reply	The fields below are the returned elements for the 158 output transaction for query rate components for their current status. <ul style="list-style-type: none"> <li>• Transaction Code (0)</li> <li>• Customer Transaction Identifier (1)</li> <li>• Sender FedEx Express Account Number (10)</li> <li>• Meter Number (498)</li> <li>• Message Type (557)</li> <li>• Message Code (558)</li> <li>• Message Text (559)</li> <li>• Severity (579)</li> <li>• FSMS Service Name (577)</li> <li>• Component Start Date (1380)</li> <li>• Component End Date (1381)</li> <li>• Component Status (1382)</li> <li>• End of Record Indicator (99)</li> </ul> Added the following note: This field supports Multiple Occurrence within the 058/158 Monitoring Transaction for the 158 Reply for an all meter or account number configured with multiple meters query.
2413	All Meters Flag	Added a note.	- 007 End-of-Day Close Request - 158 System Query Reply	Added the following note: Field IDs 0, 1, 10, 2413, 577, and 99 are recommended elements for the 058 input transaction to query rate components for their current status.
				Updated the field to support the following status request codes: <ul style="list-style-type: none"> <li>• Express Future Domestic Rates*= 53</li> <li>• Express Future International Rates*=54</li> <li>• Future EU Postal Surcharge*=55</li> </ul> <i>Note: (*) denotes codes that are not supported as input query. However, they are returned for rate components that support future rate components in the 158 reply as a multiple occurrence.</i> Added the following conditions: When 058 is used with Process Request Code (Field 556) set to '6', FSMS Service Name (Field 577) is provided with a specific rate code and one of the following scenarios is applicable: (i) account number (Field 10) is provided and multiple meters have been configured with this account number or (ii) All Meter flag (Field 2413) is used, then 158 Reply will look like the following: <ul style="list-style-type: none"> <li>• Transaction Code (0)</li> <li>• Customer Transaction Identifier (1)</li> <li>• Sender FedEx Express Account Number (10-1) <ul style="list-style-type: none"> <li>◦ Meter Number (498-1)</li> <li>◦ Message Type (557-1-1)</li> <li>◦ Message Code (558-1-1)</li> </ul> </li> </ul>

577	FSMS Service Name	Added a note and added conditions	<p>- 058 System Query Request</p> <p>- 158 System Query Reply</p>	<p>Message Text (559-1-1)</p> <ul style="list-style-type: none"> <li>o Severity (579-1-1)</li> <li>o FSMS Service Name (577-1-1)</li> <li>o Component Start Date (1380-1-1)</li> <li>o Component End Date (1381-1-1)</li> <li>o Component Status (1382-1-1)</li> </ul> <ul style="list-style-type: none"> <li>• Sender FedEx Express Account Number (10-2) <ul style="list-style-type: none"> <li>o Meter Number (498-2)</li> <li>o Message Type (557-2-1), etc.</li> </ul> </li> <li>• End of Record Indicator (99)</li> </ul> <p>When 058 is used with Process Request Code (Field 556) set to '6', account number (Field 10) is provided and only one meter is configured with this account number or Meter Number (tag 498), and FSMS Service Name (Field 577) set to 40 - All Rate File Status, then 158 Reply will look like the following:</p> <ul style="list-style-type: none"> <li>• Transaction Code (0)</li> <li>• Customer Transaction Identifier (1)</li> <li>• Sender FedEx Express Account Number (10)</li> <li>• Meter Number (498) <ul style="list-style-type: none"> <li>o Message Type (557-1)</li> <li>o Message Code (558-1)</li> <li>o Message Text (559-1)</li> <li>o Severity (579-1)</li> <li>o FSMS Service Name (577-1)</li> <li>o Component Start Date (1380-1)</li> <li>o Component End Date (1381-1)</li> <li>o Component Status (1382-1)</li> </ul> </li> <li>• Meter Number (498) <ul style="list-style-type: none"> <li>o Message Type (557-2)</li> <li>o Message Code (558-2), etc.</li> </ul> </li> <li>• End of Record Indicator (99)</li> </ul> <p>When 058 is used with Process Request Code (Field 556) set to '6', account number (Field10) is provided and multiple meters have been configured with this account number or All Meter flag (Field 2413), and FSMS Service Name (Field 577) set to 40 - All Rate File Status or Multiple Rate Components are requested, then 158 Reply will look like the following:</p> <ul style="list-style-type: none"> <li>• Transaction Code (0)</li> <li>• Customer Transaction Identifier (1)</li> <li>• Sender FedEx Express Account Number (10)</li> <li>• Meter Number (498-1) <ul style="list-style-type: none"> <li>o Message Type (557-1-1)</li> <li>o Message Code (558-1-1)</li> <li>o Message Text (559-1-1)</li> <li>o Severity (579-1-1)</li> <li>o FSMS Service Name (577-1-1)</li> <li>o Message Type (557-1-2)</li> <li>o Component Start Date (1380-1-1)</li> <li>o Component End Date (1381-1-1)</li> <li>o Component Status (1382-1-1)</li> <li>o Message Code (558-1-2)</li> <li>o Message Text (559-1-2)</li> <li>o Severity (579-1-2)</li> <li>o FSMS Service Name (577-1-2)</li> <li>o Component Start Date (1380-1-2)</li> <li>o Component End Date (1381-1-2)</li> <li>o Component Status (1382-1-2)</li> </ul> </li> </ul>
-----	-------------------	-----------------------------------	---	---

				<ul style="list-style-type: none"> <li>• Meter Number (498-2) <ul style="list-style-type: none"> <li>◦ Message Type (557-2-1)</li> <li>◦ Message Code (558-2-1), etc.</li> </ul> </li> <li>• End of Record Indicator (99)</li> </ul> <p>The fields below are the returned elements for the 158 output transaction for query rate components for their current status.</p> <ul style="list-style-type: none"> <li>• Transaction Code (0)</li> <li>• Customer Transaction Identifier (1)</li> <li>• Sender FedEx Express Account Number (10)</li> <li>• Meter Number (498)</li> <li>• Message Type (557)</li> <li>• Message Code (558)</li> <li>• Message Text (559)</li> <li>• Severity (579)</li> <li>• FSMS Service Name (577)</li> <li>• Component Start Date (1380)</li> <li>• Component End Date (1381)</li> <li>• Component Status (1382)</li> <li>• End of Record Indicator (99)</li> </ul> <p>Added the following note: Field IDs 0, 1, 10, 2413, 577, and 99 are recommended elements for the 058 input transaction to query rate components for their current status.</p>
				<p>This field indicates the type of query. Added the following conditions: When 058 is used with Process Request Code (Field 556) set to '6', FSMS Service Name (Field 577) is provided with a specific rate code and one of the following scenarios is applicable: (i) account number (Field 10) is provided and multiple meters have been configured with this account number or (ii) All Meter flag (Field 2413) is used, then 158 Reply will look like the following:</p> <ul style="list-style-type: none"> <li>• Transaction Code (0)</li> <li>• Customer Transaction Identifier (1)</li> <li>• Sender FedEx Express Account Number (10-1) <ul style="list-style-type: none"> <li>◦ Meter Number (498-1)</li> <li>◦ Message Type (557-1-1)</li> <li>◦ Message Code (558-1-1)</li> <li>◦ Message Text (559-1-1)</li> <li>◦ Severity (579-1-1)</li> <li>◦ FSMS Service Name (577-1-1)</li> <li>◦ Component Start Date (1380-1-1)</li> <li>◦ Component End Date (1381-1-1)</li> <li>◦ Component Status (1382-1-1)</li> </ul> </li> <li>• Sender FedEx Express Account Number (10-2) <ul style="list-style-type: none"> <li>◦ Meter Number (498-2)</li> <li>◦ Message Type (557-2-1), etc.</li> </ul> </li> <li>• End of Record Indicator (99)</li> </ul> <p>When 058 is used with Process Request Code (Field 556) set to '6', account number (Field 10) is provided and only one meter is configured with this account number or Meter Number (tag 498), and FSMS Service Name (Field 577) set to 40 - All Rate File Status, then 158 Reply will look like the following:</p> <ul style="list-style-type: none"> <li>• Transaction Code (0)</li> <li>• Customer Transaction Identifier (1)</li> <li>• Sender FedEx Express Account Number (10)</li> </ul>

556	Process Request Code	Updated Valid Values 4,5,6, and added new conditions, and note.	<ul style="list-style-type: none"> <li>- 070/170 Meter Query or Configuration Transaction</li> <li>- 058 System Query Request</li> <li>- 158 System Query Reply</li> </ul>	<ul style="list-style-type: none"> <li>• Meter Number (498) <ul style="list-style-type: none"> <li>◦ Message Type (557-1)</li> <li>◦ Message Code (558-1)</li> <li>◦ Message Text (559-1)</li> <li>◦ Severity (579-1)</li> <li>◦ FSMS Service Name (577-1)</li> <li>◦ Component Start Date (1380-1)</li> <li>◦ Component End Date (1381-1)</li> <li>◦ Component Status (1382-1)</li> </ul> </li> <li>• Meter Number (498) <ul style="list-style-type: none"> <li>◦ Message Type (557-2)</li> <li>◦ Message Code (558-2), etc.</li> </ul> </li> <li>• End of Record Indicator (99)</li> </ul> <p>When 058 is used with Process Request Code (Field 556) set to '6', account number (Field10) is provided and multiple meters have been configured with this account number or All Meter flag (Field 2413), and FSMS Service Name (Field 577) set to 40 - All Rate File Status or Multiple Rate Components are requested, then 158 Reply will look like the following:</p> <ul style="list-style-type: none"> <li>• Transaction Code (0)</li> <li>• Customer Transaction Identifier (1)</li> <li>• Sender FedEx Express Account Number (10)</li> <li>• Meter Number (498-1) <ul style="list-style-type: none"> <li>◦ Message Type (557-1-1)</li> <li>◦ Message Code (558-1-1)</li> <li>◦ Message Text (559-1-1)</li> <li>◦ Severity (579-1-1)</li> <li>◦ FSMS Service Name (577-1-1)</li> <li>◦ Message Type (557-1-2)</li> <li>◦ Component Start Date (1380-1-1)</li> <li>◦ Component End Date (1381-1-1)</li> <li>◦ Component Status (1382-1-1)</li> <li>◦ Message Code (558-1-2)</li> <li>◦ Message Text (559-1-2)</li> <li>◦ Severity (579-1-2)</li> <li>◦ FSMS Service Name (577-1-2)</li> <li>◦ Component Start Date (1380-1-2)</li> <li>◦ Component End Date (1381-1-2)</li> <li>◦ Component Status (1382-1-2)</li> </ul> </li> <li>• Meter Number (498-2) <ul style="list-style-type: none"> <li>◦ Message Type (557-2-1)</li> <li>◦ Message Code (558-2-1), etc.</li> </ul> </li> <li>• End of Record Indicator (99)</li> </ul>
-----	----------------------	---	--	--

For more details, refer to Appendix A of the *FedEx Ship Manager® Server (FSMS) Transaction Coding Reference Guide*.

## 6.3.2 Error Codes

### 6.3.2.1 New Error Codes

Table 33. On-Demand Rate Query - New error codes

Error Code	Error Message	Update
3000	A valid FSMS Service Name (field 577) is required for 'Status of Data files' request.	New error code.

5128	The requested FedEx Ship Manager® Server service name <Demand Download Description> is <statusCode>. A demand download may correct issues. If further assistance is needed, contact your support representative.	New error code.
5129	FedEx SmartPost® is not configured. If the automation is not configured correctly, please contact your support representative.	New error code.
5130	Rate information could not be found. A demand download may correct issue. If further assistance is needed, contact your support representative.	New error code.
5131	Rate File Status: <Demand Download Description>, <statusCode>.	New error code.

### 6.3.2.2 Modified Error Codes

Table 34. On-Demand Rate Query - Modified error codes

Error Code	Error Message	Update
0349	Invalid meter number.	Added an error condition.
2236	Ground shipping has not been properly configured for this meter.	Added an error condition.
2402	Shipper Account Number does not match with the system.	Added an error condition.

For more details, refer to Appendix D of the *FedEx Ship Manager® Server (FSMS) Transaction Coding Reference Guide*.

## 6.4 Transaction Log updates

### 6.4.1 Transaction Log Retention Period

'Transaction Log Retention Period' is added to the 'Advanced Settings' tab within the Configuration Utility that will allow the user to specify how many days each transaction log should be saved prior to purging it. The value can be set between 1 through 30 days by clicking the up or down arrows to increase or decrease the number of days.

- A new log file will be created each day and the name of each new file will contain the current date. Each day, FSMS purges the log files that are identified to be on the system beyond the retention period set in the Configuration Utility. Both the .in and .out files are purged during the 'log file' purge process.
- For any new install or clean load of FSMS1500, the new 'Transaction Log Retention Period' option is set to its default of 5 days. Upon upgrade to FSMS1500, the 'Transaction Log' setting on the 'System Settings' tab at the time of the upgrade shall be carried over to the new 'Transaction Capture' setting on the 'Advanced Settings' tab for the master meter.

### 6.4.2 Transaction Capture

'Transaction Capture' is added to the 'Advanced Settings' tab within the Configuration Utility that will allow the user to specify if the transaction logs should be captured or not.

- When it is checked transaction logs are captured and when it is unchecked the transaction logs are not captured.
- If the 'Transaction Capture' box is unchecked, the 'Transaction Log Retention Period' number of days box is grayed out. For any new install or clean load of FSMS1500, the new 'Transaction Capture' option is defaulted to 'OFF'.
- For any new install or clean load of FSMS1500, the new 'Transaction Capture' option is defaulted to 'OFF'. Upon upgrade to FSMS1500, the number of 'Days' setting on the 'System Settings' tab at the time of the upgrade shall be carried over to the new 'Transaction Log Retention Period' setting on the 'Advanced Settings' tab for the master meter.

Figure 5. Advanced Settings tab in Configuration Utility



Note: Users can copy, rename and move the transaction file without stopping services (e.g. Ship Manager service, Admin service, etc.). Also, the period of time for which transactions are captured is configurable. Users can set how long transactions are captured before they are purged. The 'TransactionLog' check box and 'Days' drop down are removed from the Systems Settings tab within the FedEx Configuration Utility.

## 6.4.3 Field Updates

### 6.4.3.1 New Fields

Table 35. Transaction Log Updates - New fields

Field ID	Field Name	Update	Affected Transactions	Description
2550	Transaction Capture Option	All required field data updates	NA	<p>This field allows users to indicate whether or not the transaction logs should be captured and saved to file. This Field ID is used in conjunction with Field ID 2551 (Transaction Log Retention Period) when passed in the 070/170 Meter Query or Configuration transaction.</p> <p>Added the following condition:            When a user attempts to update the Transaction Capture Option check-box on the Advanced Settings Tab within the FedEx Configuration Utility via the 070/170 Meter Query or Configuration Transaction and has passed in an invalid value or (i) Field ID 556 (Process Request Code) is set to value 3 (Update FedEx Configuration) and (ii) Field ID 2550 (Transaction Capture Option) is set to anything other than Y or y, then the Transaction Capture Option field is ignored and the current transaction log capture setting will not change.</p>

				<p>Added the following note: FSMS supports field IDs 2550 and 2551 within the 070/170 Meter Query or Configuration Transaction to configure the new Transaction Log Capturing functionality by setting the value to 3.</p>
2551	Transaction Log Retention Period	All required field data updates	NA	<p>This field allows users to indicate how many days each transaction log should be saved prior to purging it. It can be a value set between 1 through 30. This Field ID is used in conjunction with Field ID 2550 (Transaction Capture Option) when passed in the 070/170 Meter Query or Configuration transaction.</p> <p>Added the following condition: When a user attempts to update the Transaction Log Retention Period on the Advanced Settings Tab within the FedEx Configuration Utility via the 070/170 Meter Query or Configuration Transaction and has passed in an invalid value, or the following field/values are passed in the transaction with all other valid required/optional transaction data: (i) Field ID 556 (Process Request Code) is set to value 3 (Update FedEx Configuration) and (ii) Field ID 2551 (Transaction Log Retention Period) is set with any other value other than a number between 1 through 30, then the Transaction Log Retention Period defaults to 1 if the value provided is less than 1, and it defaults to 30, if the value provided is greater than 30. The Transaction Log Retention Period is updated with the default value based on the value provided in the Field ID.</p> <p>Added the following note: FSMS supports field IDs 2550 and 2551 within the 070/170 Meter Query or Configuration Transaction to configure the new Transaction Log Capturing functionality by setting the value to 3.</p>

## 6.4.4 Field Update

### 6.4.4.1 Modified Fields

Table 36. Transaction Log Updates - Modified fields

Field ID	Field Name	Update	Affected Transactions	Description
556	Process Request Code	Added conditions and a note	- 070 Meter Query or Configuration Request	<p>Added the following conditions:</p> <ul style="list-style-type: none"> <li>When a user attempts to update the Transaction Capture Option check-box on the Advanced Settings Tab within the FedEx Configuration Utility via the 070/170 Meter Query or Configuration Transaction and has passed in an invalid value or the following field/values are passed in the transaction with all other valid required/optional transaction data: (i) Field ID 556 (Process Request Code) is set to value 3 (Update FedEx Configuration) and (ii) Field ID 2550 (Transaction Capture Option) is set to anything other than Y or y, then the Transaction Capture Option tag is ignored and the current transaction log capture setting will not be changed.</li> <li>When a user attempts to update the Transaction Log Retention Period on the Advanced Settings Tab within the FedEx Configuration Utility via the 070/170 Meter Query or Configuration Transaction and has passed in an invalid value, or the following field/values are passed in the transaction with all other valid required/optional transaction data: (i) Field ID 556 (Process Request Code) is set to value 3 (Update FedEx Configuration) and (ii) Field ID 2551 (Transaction Log Retention Period) is set with any other value other than a number between 1 through 30, then the Transaction Log Retention Period defaults to 1 if the value provided is less than 1, and it defaults to 30, if the value provided is greater than 30. The Transaction Log Retention Period is updated with the default value based on the value provided in the Field ID.</li> </ul> <p>Added the following note: FSMS supports field IDs 2550 and 2551 within the 070/170 Meter Query or Configuration Transaction to configure the new Transaction Log Capturing functionality by setting the value to 3.</p>

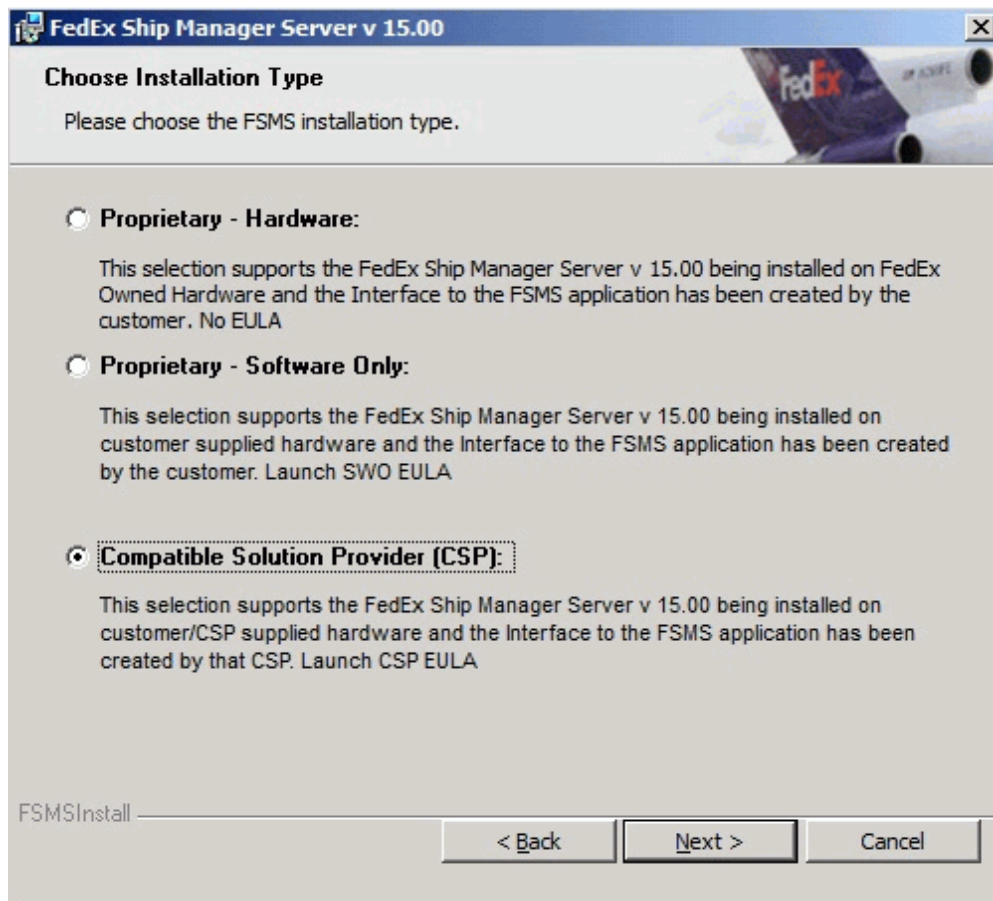
For more details, refer to Appendix A of the *FedEx Ship Manager® Server (FSMS) Transaction Coding Reference Guide*.

## 6.5 Install Enhancements

## 6.5.1 'Choose Installation Type' Screen

In the 'Choose Installation Type' screen, the CSP entry 'Certified' has been replaced with 'Compatible'.

Figure 6. Choose Installation Type Screen



## 6.5.2 Compatible Solution Provider Information Screen

Click 'I accept the terms in the license agreement' on the 'CSP License Agreement' screen and select Compatible Solution option from 'Installation Type' screen to get a display of the 'Compatible Solution Provider Information' screen.

Figure 7. Compatible Solution Provider License Agreement Screen

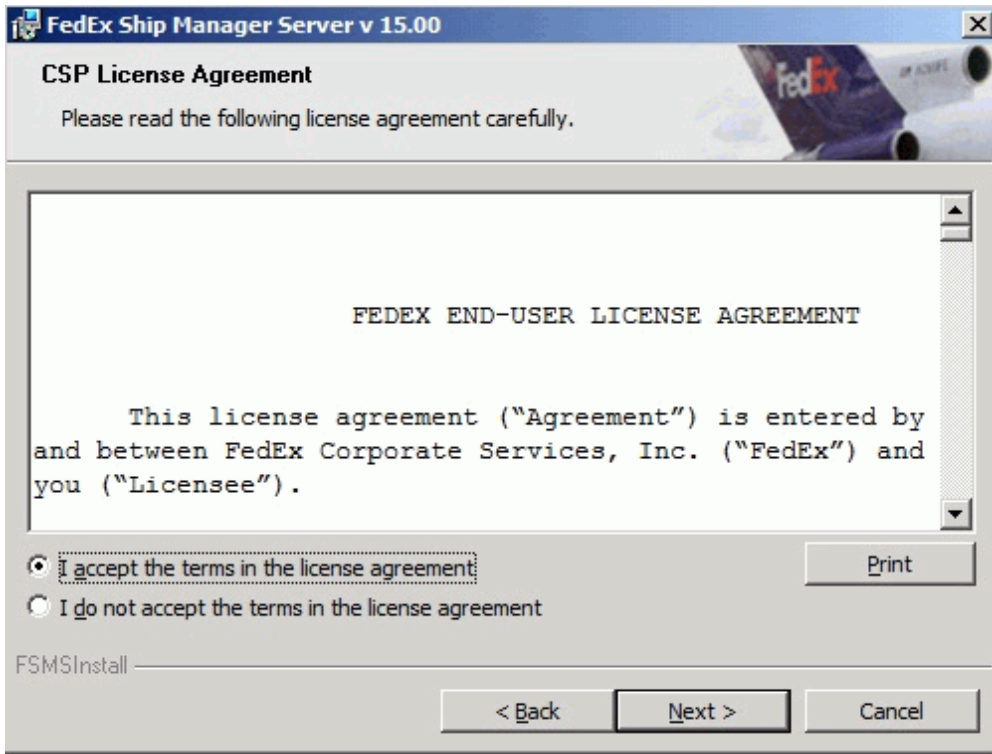
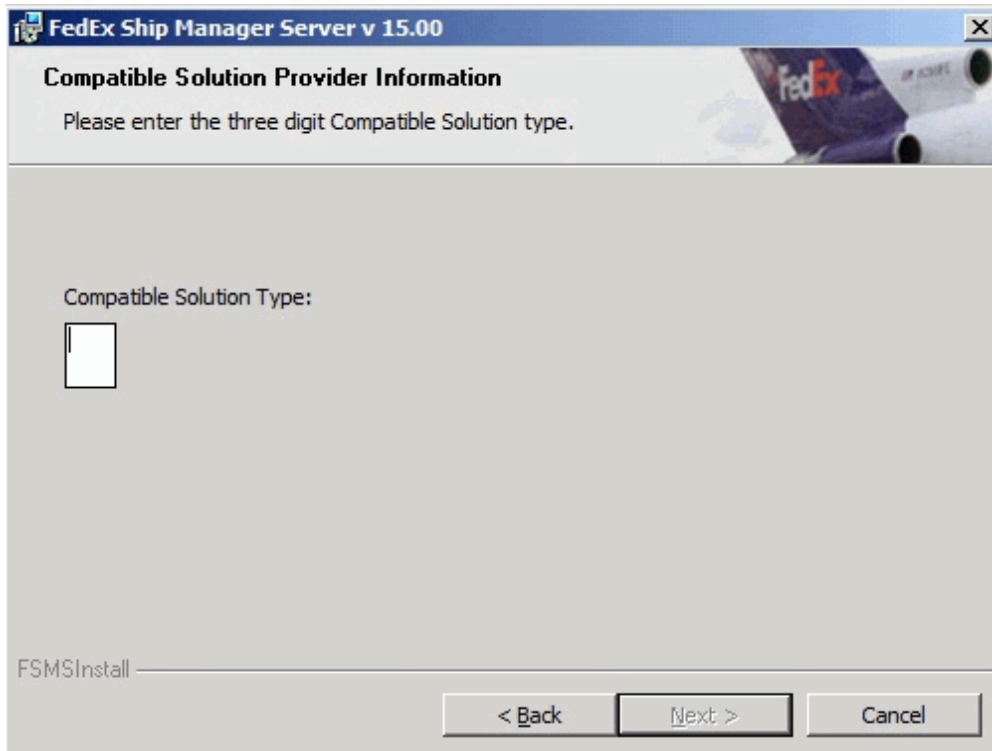


Figure 8. Compatible Solution Provider Information Screen



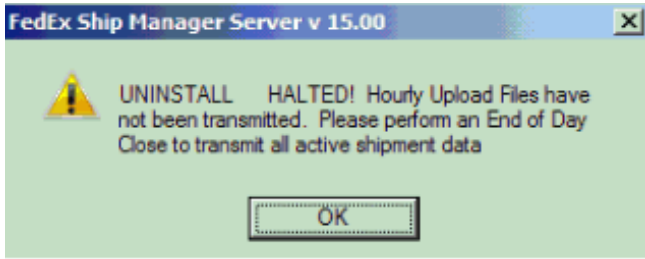
*Notes:*

- Only numeric entries are allowed in the Compatible Solution Type field. When non-numeric (alpha or special characters) are entered a standard 'numeric entry required' message will be displayed.
- The 'Next' button will not become active until three numeric digits are entered.
- In the event more than three digits are entered this data will be ignored and not displayed in the entry field.

### 6.5.3 Hourly Upload File (HUF) Verification

Prior to un-installing the FSMS software the installation verifies if any hourly upload files are present and have not been uploaded. If there are any files present, then the un-installation process stops and the following message box appears:

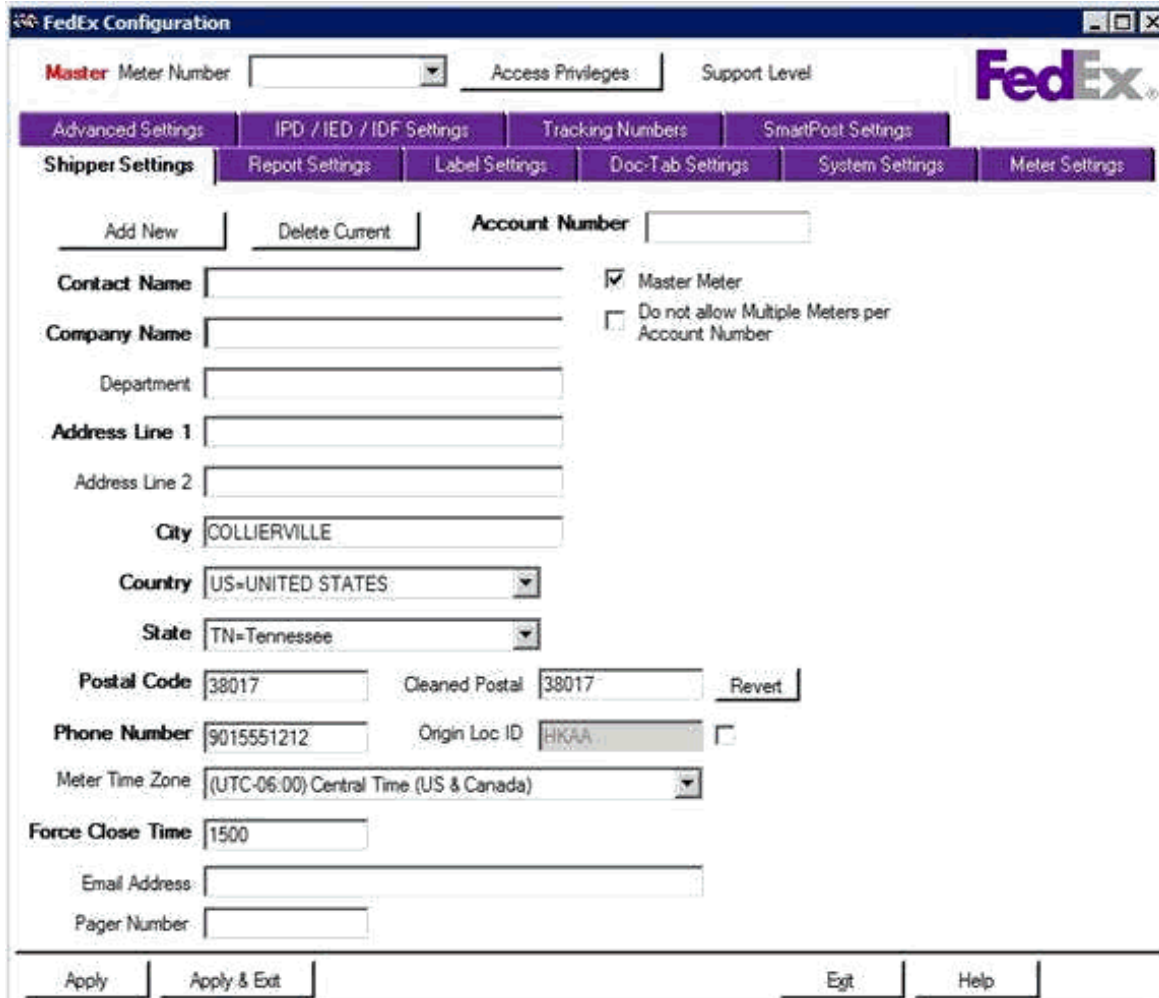
Figure 9. Hourly Upload File (HUF) Verification



Prior to upgrading the software from a CD or delta update, the installation verifies if any hourly upload files are present and have not been uploaded. If there are any files present then the installation process makes a backup of all files not uploaded, upgrades the software and restores backup HUF files.

## 6.6 Configuration Utility Updates


Figure 10. Shipper Settings Screen



Note: AN = Netherlands Antilles is no longer available in the country code drop down list.

Figure 11. Meter Registration Utility

FedEx Installation FSMS -v15.00



Please enter the required information below:

FedEx Acct. Number:

Country:

Postal Code:

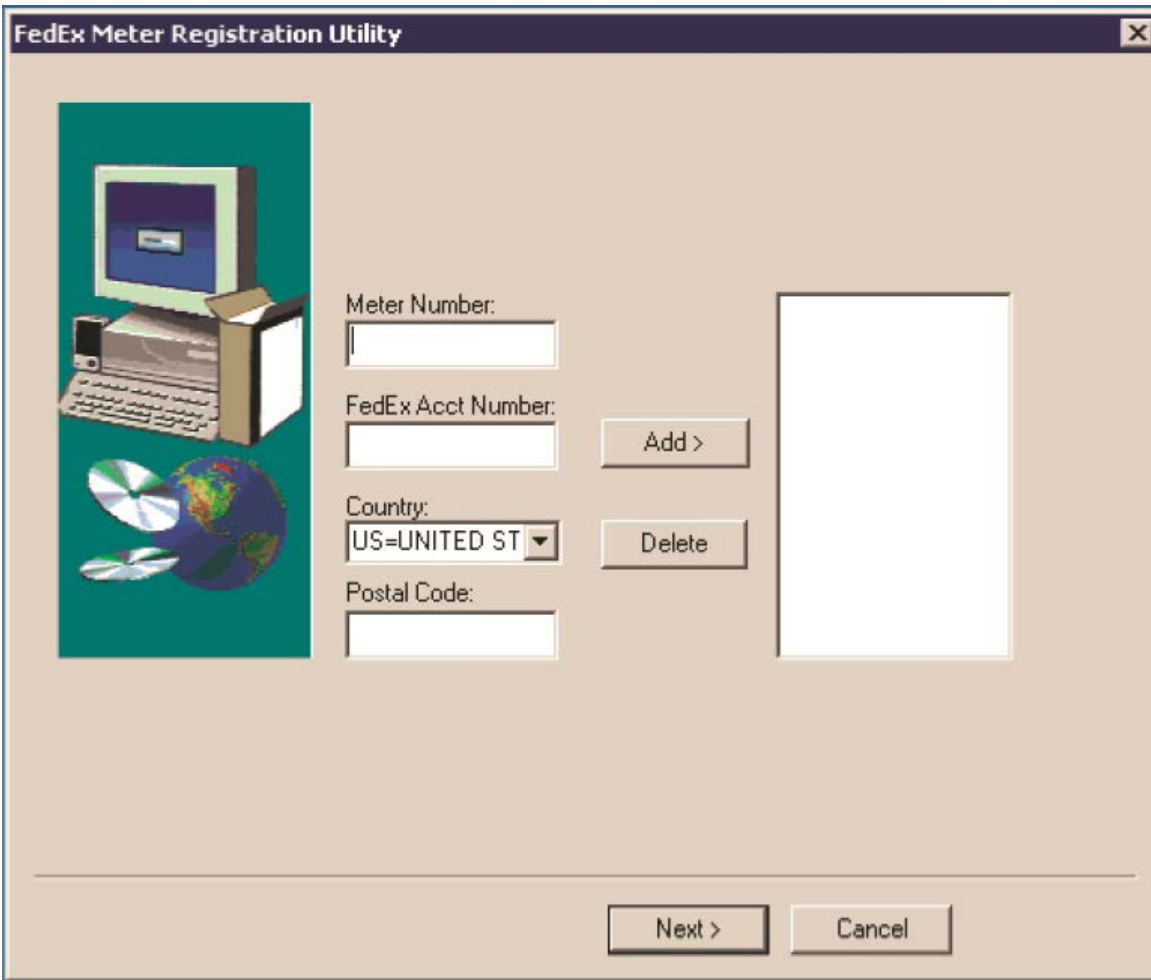
If you have an existing meter number for this device, please enter it below then click Next to continue. If you do not, please click Next to request a new meter from FedEx.

Meter Number:  *(Parent Only)*

This meter has also been assigned Child meters:

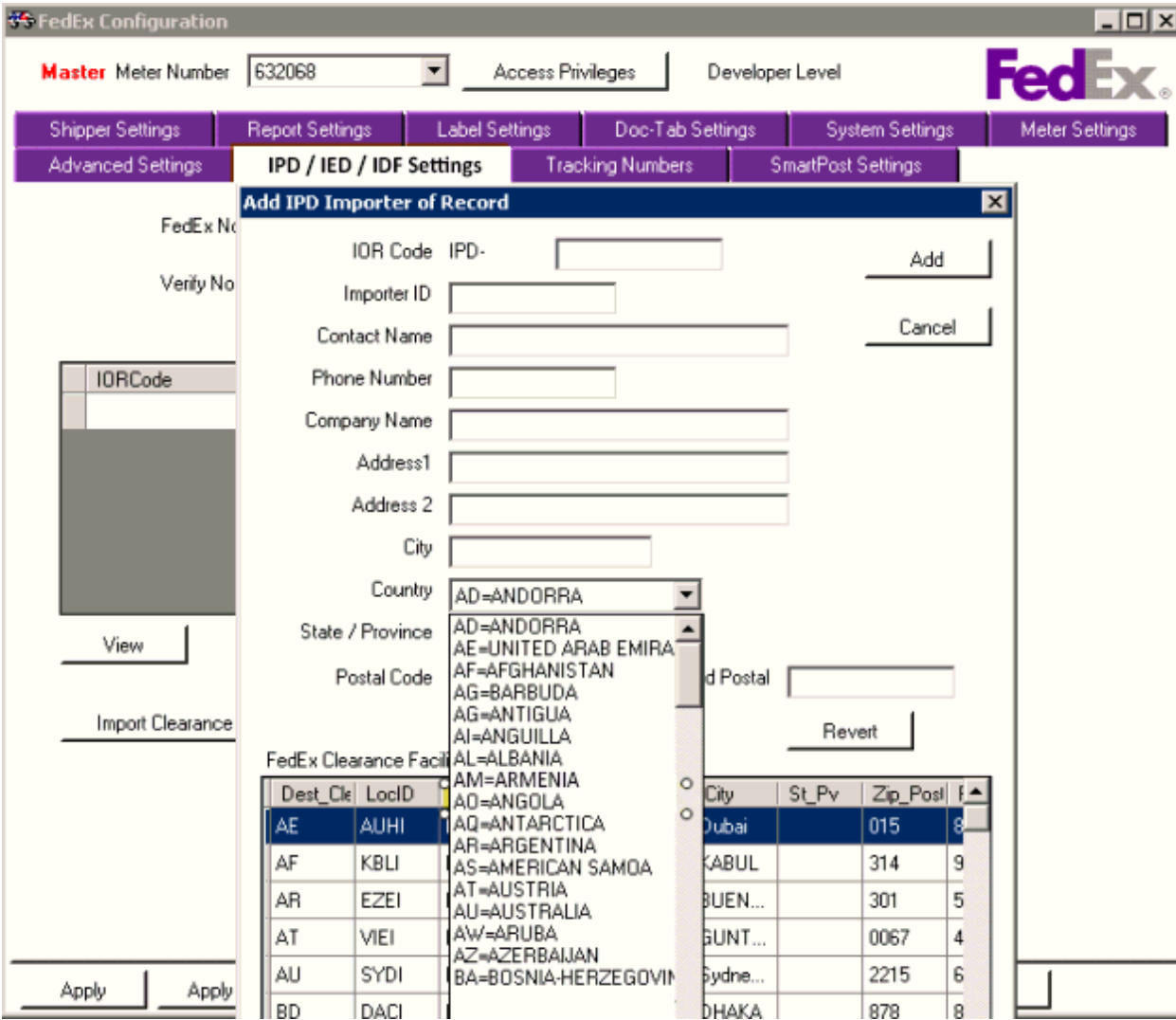
Note: AN = Netherlands Antilles is removed from the 'Country' drop down list within the 'Meter Registration Utility' screen when requesting a child meter via this utility.

Figure 12. Adding Additional Meters



*Note: The country code 'AN = Netherlands Antilles' is removed from the 'Country' drop down list.*

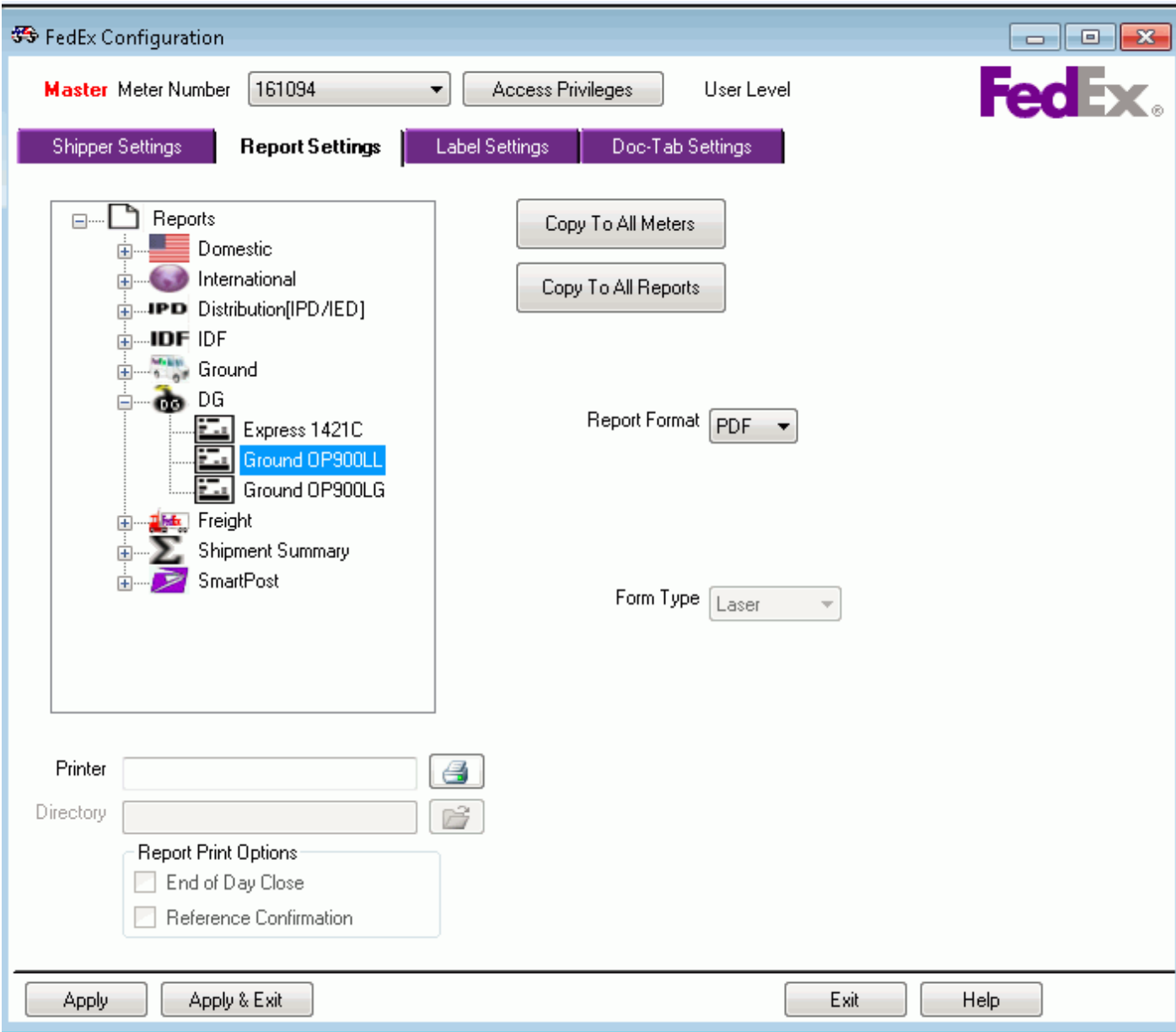
Figure 13. IPD / IED / IDF Settings Tab



Note: AN = Netherlands Antilles is no longer available in the country code drop down list when adding an Importer of Record.

Figure 14. Configuration Report Settings





*Notes:*

- The Ground OP900 is renamed as Ground OP900LL and Ground OP900B is removed under the 'DG' branch of the 'Reports' tree.
- The 'Form Type' field is defaulted to 'Laser' and grayed out/disabled when the 'Ground OP900LL' form is selected.
- Upon upgrade, if the user has the Ground OP900 form configured under the DG branch on the Report Settings Tab in the FedEx Configuration Utility, FSMS grays out/disables the 'Form Type' drop down defaulted to 'Laser'.

For more details on configuration utility update, refer to the *FedEx Ship Manager® Server (FSMS) Installation and Configuration Guide*.

## 7. System Requirements

Before you begin installing FSMS, be sure you have reviewed the guidelines that describe computer system requirements and supported printers, servers and scales. See the following table for minimum software and hardware requirements.

### 7.1 Minimum Software and Hardware Requirements

Table 37. FedEx Ship Manager Server Minimum Software Requirements

Minimum Software Requirements	
Operating System	<p>Windows® 2008 Standard Server (32 bit)                      Windows® 2008 Standard Server (64 bit)                      Windows® 7 Professional (32 bit)                      Windows® 7 Professional (64 bit)                      Windows® 8                      Windows® 8.1                      Windows® 8 Pro                      Windows® 8.1 Pro                      Windows® 8 Enterprise                      Windows® 8.1 Enterprise</p> <p><i>Note: Any updates to Microsoft's Windows® 8, Windows® 8.1, Windows® 8 Pro, Windows® 8.1 Pro, Windows® 8 Enterprise, and Windows® 8.1 Enterprise environments are also supported.</i></p> <p>Windows® 2008 R2 Standard Server (64 bit)                      Windows® 2008 R2 Server Enterprise</p> <p><i>Notes:</i></p> <ul style="list-style-type: none"> <li>- This version of FedEx Ship Manager Server is designed to work best on Windows 2008R2 and higher. Microsoft ended support for Windows XP on April 8, 2014. FedEx recommends that you upgrade to ensure your systems are not at risk. See the Microsoft website: <a href="https://www.microsoft.com/enus/windows/enterprise/end-of-support.aspx">https://www.microsoft.com/enus/windows/enterprise/end-of-support.aspx</a></li> <li>- .Net Framework version is not present, then the installer aborts the installation of FSMS and a parameterized error message "FedEx Ship Manager® Server requires that your system has the .Net Framework version &lt;.Net version&gt; installed," is displayed before the installer is closed. This behavior is the same for new installs or CD upgrades.</li> </ul>

Table 38. FedEx Ship Manager Server Minimum Hardware Requirements

Minimum Hardware Requirements	
Processor	Quad Core Xeon E3 Processor
Memory	8 GB RAM
Hard Drive	300 GB
Network adapter	10/100/1000 Mbps
CD ROM drive	Windows compatible
Modem	Hayes compatible 56k

*Note: FedEx does not maintain and support customers' virtual environments.*

## 7.2 Required Hardware (High Volume)

High volume and performance hardware is recommended for shippers shipping between 40K and 100K shipments a day. The hardware is based on the existing warehouse distributed platform with the below noted upgrades.

- Processor (minimum):
  - Dual, modern (fastest and most cores available) Xeon.
- Memory (minimum):
  - 16 GB ECC.
- Disk:
  - Recommended SSD (solid state)
  - Space determined by shipping needs of client but not less than 1 TB.

## 7.3 FSMS Development Recommendations

- To segregate work, services can be processed on different servers.
  - Eg. If rate shipping and sending many rate/route transactions, an additional server is used to process.
- Do not access the FSMS database while shipping.
- High performance hardware is recommended in the following cases:
  - Future Day
  - High Volume International
  - MPS
- All services should be run by logging in as a local administrator (not domain administrator).
- If other software will be collocated on the server, this requires further research and consulting.
- For large volume and/or performance-integrated customer: Review the customers system data flows and operational functionality to identify any choke points that could restrict requested volume and/or performance of transactions.

## 7.4 Supported Thermal Printers

A new printer ZT410 is now supported besides the existing ZPL thermal printers.