



FedEx Ship Manager® Server
v.16.0.1

Technical What's New Guide



Table of Contents

1	New and Enhanced Services	11
1.1	Hold at Location (HAL) lookup expansion	11
1.2	IPD/IED/IDF Clearance Document Enhancements	12
1.3	Freight Shipment Update	14
1.4	Routing Edits	14
1.5	New Return Shipment Edits	15
1.6	New Ground Shipment Edits	15
1.7	New Unit of Measure Values	16
1.8	Label Changes	17
1.9	Intra-India COD Edits	17
2	Rating Updates	19
2.1	Reclassification of Clearance Entry Fee (CEF)	19
3	FedEx SmartPost Shipping	23
3.1	Support for Third Party Billing	23
3.2	New SmartPost Service Type edits	23
3.3	Automatic Download of SmartPost Tracking Numbers Range	25
4	Dangerous Goods	26
4.1	Documentation Data Upload & Shipping	26
5	Notification Changes	31
5.1	Estimated Delivery Notification	31
5.2	Remove Wireless Notification Format Type	33
5.3	New validations for existing Notifications	33
6	Report Changes	34
6.1	New IPD/IED/IDF Customs Detail Report	34
6.2	Enhancements to EOD Close Reports	35
7	Software Configuration Updates	36
7.1	Windows Support	36
7.2	Configuration Utility Updates	36
7.3	Configuration Transaction Updates	41
7.4	Demand Download Utility updates	44
7.5	Common Setup Utility Updates	48
7.6	Maintenance Window	48

8	System Requirements	49
8.1	Minimum Software Requirements.....	49
8.2	Minimum Hardware Requirements.....	50
8.3	Required Hardware (High Volume).....	50
8.4	Supported Thermal Printers.....	50
	Appendix	51
	New Server Report Codes.....	51
	New Ground DocTab Serial Numbers.....	51
	Index	52

List of Tables

Table 1. Hold at Location (HAL) Country - New Field	11
Table 2: International Priority DirectDistribution (IPD) / International Economy DirectDistribution (IED) / International Priority DirectDistribution Freight (IDF) Clearance Enhancements - New Fields.....	12
Table 3. International Priority DirectDistribution (IPD) / International Economy DirectDistribution (IED) / International Priority DirectDistribution Freight (IDF) Clearance Enhancements - New Error Codes.....	13
Table 4. International Priority DirectDistribution (IPD) / International Economy DirectDistribution (IED) / International Priority DirectDistribution Freight (IDF) Clearance Enhancements - New Warning Codes	13
Table 5. Freight Shipment Update - New Error Code	14
Table 6. Routing Edits - New Error Codes.....	14
Table 7. International Return Shipment Edits - New Error Codes	15
Table 8. Ground Shipment Edits - New Error Codes.....	16
Table 9. Unit of Measure - Modified Fields.....	16
Table 10. Unit of Measure - New Error Codes.....	17
Table 11. Intra-India COD - New Error Codes	18
Table 12. Ancillary Fees and Taxes - New Fields.....	19
Table 13. Surcharge Fields - Modified Fields.....	22
Table 14: SmartPost Associated Account Number - New field	23
Table 15. SmartPost Service Type - New values – Modified Fields	24
Table 16. SmartPost Shipment Errors - New Error Codes	25
Table 17. SmartPost Shipment Warnings - New Warning Codes.....	25
Table 18. Dangerous Goods Data Upload & Shipping - Modified Fields	26
Table 19. Dangerous Goods - New Error Codes	27
Table 20. Dangerous Goods - New Warning Codes	30
Table 21. Notifications - New Fields.....	31
Table 22. Notifications - Modified Fields	33

Table 23. Notifications - New Warning Codes.....	33
Table 24. Reports Changes - Modified Field	35
Table 25. Configuration Transaction - New Fields.....	41
Table 26. Configuration Transaction - Modified Fields.....	42
Table 27. FedEx Ship Manager Server Minimum Software Requirements	49
Table 28. FedEx Ship Manager Server Minimum Hardware Requirements	50

Table of Figures

Figure 1. IPD/IED/IDF Customs Detail Report.....	34
Figure 2. Help Window.....	37
Figure 3. Report Settings.....	38
Figure 4. SCNC/Secondary Barcode Drop-down on the Meter Settings Tab.....	40
Figure 5. Demand System Data.....	44
Figure 6. Demand Meter Data	45
Figure 7. Reconcile on Demand Download.....	46
Figure 8. Admin Service - Message Box.....	47
Figure 9. Client Service - Message Box	47
Figure 10. Common Service - Message Box.....	48
Figure 11. Common Setup	48

Legal and Copyright Notices

Confidential and Proprietary

The information contained in this guide is confidential and proprietary to FedEx Corporate Services, Inc. and its affiliates (collectively “FedEx”). No part of this guide may be distributed or disclosed in any form to any third party without written permission of FedEx. This guide is provided to you and its use is subject to the terms and conditions of the FedEx Automation Agreement. The information in this document may be changed at any time without notice. Any conflict between this guide, the FedEx Automation Agreement and the *FedEx Service Guide* will be governed by the FedEx Automation Agreement and the *FedEx Service Guide*, in that order.

© 2015 - 2016 FedEx. FedEx and the FedEx logo are registered service marks. All rights reserved.

Payment

You must remit payment in accordance with the *FedEx Service Guide*, tariff, service agreement or other terms or instructions provided to you by FedEx from time to time. You may not withhold payment on any shipments because of equipment failure or for the failure of FedEx to repair or replace any equipment.

Inaccurate Invoices

If you generate an inaccurate invoice, FedEx® may bill or refund to you the difference according to the *FedEx Service Guide*, tariff service agreement or other terms or instructions provided to you by FedEx from time to time. A request for refund on a FedEx shipment must be made in accordance with the applicable Service Guide or terms or instructions provided by FedEx from time to time. A shipment given to FedEx with incorrect information is not eligible for refund under any FedEx money-back guarantee.

FedEx may suspend any applicable money-back guarantee in the event of equipment failure or if it becomes inoperative.

Disclaimer

All Improper Transaction scenarios are for example only. They do not reflect all error condition scenarios.

About This Document

The *FedEx Ship Manager® Server Technical What's New Guide* provides technical information about features in this release. It contains descriptions of new features, transactions and transaction fields that make up the new functionality and enhancements included in the software since the v 15.0.1 release.

This document is *not* intended for use as a coding reference or as a detailed technical specification of the new features. Details for all features described in this document are included in the *FedEx Ship Manager Server® Transaction Coding Reference Guide* and the *FedEx Ship Manager Server® Developer Guide*.

Note: This document lists the data elements for this release of the FedEx Ship Manager Server.

Audience

This document is intended for the following audiences.

- ☒ Shipper managers, users, or developers interested in obtaining FedEx Ship Manager Server
- ☒ Customer managers, users, or developers using FedEx Ship Manager Server for the first time
- ☒ Customer managers, users, or developers already using FedEx Ship Manager Server wanting to learn about the new and enhanced features in this release
- ☒ Managers, users, or developers of third-party development organizations

Conventions

This guide uses the following conventions in the text.

Indicator	Description
Courier New	Sample transaction code is formatted in Courier New.
<i>Note</i>	Important notices begin with the word "Note."
Bold	In task instructions, software user interface elements, or information you need to enter in a field or transaction, are formatted in bold.
<i>italics</i>	Names of documents and FSMS transactions are shown in italics. For instance, the 020/120 Global Ship Request/Reply. First occurrence of a term is italicized followed by a definition. For instance <i>EEI filing</i> (Electronic Export Information).
purple	Cross-references are in purple.

Resources

- ☒ [FedEx Ship Manager® Server Installation and Configuration Guide](#)
- ☒ [FedEx Ship Manager® Server Developer Guide](#)
- ☒ [FedEx Ship Manager® Server Technical What's New Guide](#)
- ☒ [FedEx Ship Manager® Server Transaction Coding Reference Guide](#)
- ☒ FedEx Service Guide: fedex.com/us/service-guide
- ☒ FedEx Services At-a-Glance: fedex.com/us/services/ata glance.html
- ☒ FedEx Developer Resource Center: fedex.com/developer

Support

Support Type	Access	Prompt	Support Topics	Hours
Web	FedEx.com	NA	NA	NA
FedEx Technical Support	1.877.339.2774	FedEx Ship Manager Server	<ul style="list-style-type: none"> • fedex.com • FedEx Ship Manager • FedEx Web Services • More options 	Monday to Friday CST 7 a.m. – 9 p.m. Saturday CST 9 a.m. – 3 p.m.
FedEx Customer Service	1.800.463.3339	In a few words, please say what you are calling about.	<ul style="list-style-type: none"> • Schedule a pick-up • I need shipping rates • Track a package • Find a FedEx location • More options 	24 hours a day, 7 days a week
FedEx Dangerous Goods	1.800.463.3339	Dangerous Goods/81	<ul style="list-style-type: none"> • Schedule a dangerous goods or HazMat pick-up, ship alcohol or firearms, get rates or order supplies • Technical Support • International Dangerous Goods questions • Speak with a Dangerous Goods Representative 	Monday to Friday CST 7 a.m. – 7 p.m. Saturday CST 10 a.m. – 2 p.m.

FedEx Ship Manager® Server software is free. Contact a FedEx support representative if you wish to expand your current FSMS installation or want additional information.

If you have questions or need technical assistance:

- United States and Canada: call 1.877.339.2774. Support hours are 7 a.m. to 9 p.m. CT Monday through Friday and 9 a.m. to 3 p.m. CT Saturday
- Europe: email techsupport_emea@fedex.com
- The Indian Subcontinent, the Middle East and Africa: email meisatechsupport@fedex.com
- Asia-Pacific: email fdxhelpdesk@fedex.com
- Brazil: email ct-brazil@corp.ds.fedex.com
- The rest of Latin America and the Caribbean: [click here](#) for your country's dedicated support phone number

FedEx Service Guide

Within this guide, you may be asked to refer to the *FedEx Service Guide* for details about FedEx services, packaging, and other information. To view or download the U.S. guide, go to fedex.com/us/service-guide and click the '**Download Now**' option in the gray box on the left.

FedEx Electronic Export Information Filing Options

United States only

If you are a U.S. shipper and your U.S. export shipments require EEI filing (Electronic Export Information, formerly known as Shipper's Export Declaration, SED) go to <http://www.fedex.com/us/electronic-export-information/filing.html> for more information.

1 New and Enhanced Services

1.1 Hold at Location (HAL) lookup expansion

Hold at FedEx Location (HAL) lookup expansion provides the Hold at FedEx Location lookup functionality to all FedEx Express locations, where this service is available. HAL special service is available for an international express outbound, print return, and email return shipments.

1.1.1 Field Update

The following lists the new fields for Hold at Location (HAL) service. For more details, refer to Appendix A of the *FedEx Ship Manager® Server Transaction Coding Reference Guide*.

Table 1. Hold at Location (HAL) Country - New Field

Field ID	Field Name	Update	Affected Transactions
7236	HAL Country	New field	<ul style="list-style-type: none"> - 020 Global ShipRequest - 060 FreightCreateBOLRequest - 037 Email LabelRequest - 025 Rate AvailableServiceRequest
Description This indicates the HAL country of the HAL location where the shipment is being held. Hold at Location (HAL) special service has been made available for international express outbound, print return, and email return shipments. A new tag for HAL Country is added to support this expansion of HAL special service to the international locations.			
Type: Alpha		Minimum Length: 2	Maximum Length: 2
Multiple Occurrence: Y		Input/Output: Output	Carrier: FDXE
Valid Values (if applicable or NA): NA Default Value (if applicable or NA): NA Optionality (Required, Optional, Conditional – state why or NA): Optional Shipment vs. Piece vs. Commodity Level: Piece (Package level – one per label)			

1.2 IPD/IED/IDF Clearance Document Enhancements

FSMS now supports a new input field "commodity purpose" for business use or consumer use which will be used to calculate duties and taxes by Canada customs.

1.2.1 Field Updates

The following lists the new fields for International Priority Direct Distribution (IPD) / International Economy Direct Distribution (IED) / International Priority Direct Distribution Freight (IDF) Commodities and Customs Detail Report. For more details, refer to Appendix A of the *FedEx Ship Manager® Server Transaction Coding Reference Guide*.

Table 2: International Priority Direct Distribution (IPD) / International Economy Direct Distribution (IED) / International Priority Direct Distribution Freight (IDF) Clearance Enhancements - New Fields

Field ID	Field Name	Update	Affected Transactions
7245	Commodity Purpose	New field	- 020 Global Ship Request
	Description		
	This field is used to designate the purpose of the commodity. It can be used at the MAWB level or at the individual commodity level. For shipments destined to Canada, it will be used in the calculation of Duties and Taxes.		
	Type: N	Minimum Length: 1	Maximum Length: 1
	Multiple Occurrence: Y	Input/Output: Input	Carrier: FXFE, FXFG
	Valid Values: 0 - None, 1 - Business Use, 2 - Consumer Use Optionality: Optional in the 020/120 Global Shipping Transaction Shipment vs Piece Level: Combination - when passed in at the MAWB level it's applicable to the entire shipment. When it's passed in at the individual Commodity level within a CRN, it's only applicable to that specific commodity.		
7246	Print IPD/IED/IDF Customs Detail Report	New field	- 020 Global Ship Request
	Description		
This field is used to indicate that the IPD/IED/IDF Customs Detail Report should be printed. It is printed when the MAWB is confirmed for an IPD/IED/IDF consolidated shipment. A report printer must be configured for it to print or a file destination must be indicated to save it to a file. Both options are configurable via the Report Tab within the configuration utility.			

Field ID	Field Name	Update	Affected Transactions
	Type: A	Minimum Length: 1	Maximum Length: 1
	Multiple Occurrence: N	Input/Output: Input	Carrier: FXFE
	Valid Values: Y - Prints the IPD/IED/IDF Customs Detail Report N - Do not print the IPD/IED/IDF Customs Detail Report Optionality: Optional in the 020 Global Ship Request Transaction Shipment vs Piece Level: Shipment		

1.2.2 Error Codes

The following lists the new error and warning codes for IPD/IED/IDF Commodities and Customs Detail Report. For more details, refer to Appendix D of the *FedEx Ship Manager® Server Transaction Coding Reference Guide*.

Table3. International Priority Direct Distribution (IPD)/International Economy Direct Distribution (IED)/International Priority Direct Distribution Freight (IDF) Clearance Enhancements- New Error Codes

Error Code	Error Message	Update
4067	Your shipment cannot be processed because you have provided an invalid or blank value in the Commodity Purpose field.	New error code. CA destination IPD/IED/IDF shipment confirm transaction fails if Commodity Purpose field was blank.
4066	Your shipment cannot be processed because you have provided an invalid or blank value in the Print IPD/IED/IDF Customs Detail Report field.	New error code. IPD/IED/IDF shipment create transaction fails if tag#7246 (Print IPD/IED/IDF Customs Detail Report) was set with a value other than "Y" or "N".

Table4. International Priority Direct Distribution (IPD)/International Economy Direct Distribution (IED)/International Priority Direct Distribution Freight (IDF) Clearance Enhancements- New Warning Codes

Warning Code	Warning Message	Update
5142	The Commodity Purpose field you have provided will not be used, but your shipment will continue to be processed.	New warning code. Transaction is successfully processed, but the Commodity Purpose field provided is not used.

Warning Code	Warning Message	Update
5141	The IPD/IED/IDF Customs Detail Report you requested is not available, but your shipment will continue to be processed.	New warning code. Transaction is successfully processed, but the IPD/IED/IDF Customs Detail Report is not generated.

1.3 Freight Shipment Update

060 - Freight Shipment transaction now errors out when Number of Packages - tag 2931 exceeds 9999 pieces in a line item.

1.3.1 Error Codes

The following lists the new error codes for the Freight Shipments. For more details, refer to Appendix D of the *FedEx Ship Manager® Server Transaction Coding Reference Guide*.

Table 5. Freight Shipment Update - New Error Code

Error Code	Error Message	Update
4065	There was an error processing your freight shipment. Please correct the shipment and try again.	New error code. Freight Shipment transaction fails when tag 2931 (Number of Packages) exceeds 9999 pieces in a line item.

1.4 Routing Edits

FSMS has now implemented following new routing edits.

1.4.1 Error Codes

The following lists the new error codes for the Routing Edits. For more details, refer to Appendix D of the *FedEx Ship Manager® Server Transaction Coding Reference Guide*.

Table 6. Routing Edits - New Error Codes

Error Code	Error Message	Update
3142	International shipments from this service area are not allowed.	New error code. Shipment transaction fails if the selected service is not allowed from the origin.

Error Code	Error Message	Update
3143	The following special service is not allowed from this origin: <Special Service Name>	New error code. Shipment transaction fails if the selected special service is not allowed from the origin.

1.5 New Return ShipmentEdits

FSMS allows to request Multiple Email Return Requests at once, however this is not a Multiple Piece Email Return. Each occurrence within a Multiple Email Return Request is viewed as an individual shipment and edits, if applicable, it is supported at the package level. Specifically, when shipping multiple email returns, each occurrence requires shipment information being provided per occurrence.

Commodity information, if provided or applicable, is assumed to be applied to each occurrence. If there is a need to have different commodities in different email return request(s) then each commodity should be processed individually in different email return request(s) transactions.

The Print Return or Email Return freight shipments fail if the Declared Value/Carriage Value (Tag 69) greater than \$50,000.

1.5.1 Error Codes

The following lists the new error codes for the International Return Shipments. For more details, refer to Appendix D of the *FedEx Ship Manager® Server Transaction Coding Reference Guide*.

Table 7. International Return Shipment Edits - New Error Codes

Error Code	Error Message	Update
2824	Total commodities weight is greater than package or shipment weight.	New error code. Email Return shipment fails if the total commodity weight (sum of tag 77) exceeds the weight of the individual package weight (tag 1670 - Package/Shipment Weight).
2494	Package Weight must be provided for each Email Return request.	New error code. Email Return shipment fails if the package weight (tag 1670) was not provided for either of the packages.
2253	The limit for Declared Value has been exceeded.	Existing error code. Email Return shipment fails for FedEx Express Freight Service if the Declared Value/Carriage Value (Tag 69) exceeds \$50,000.

1.6 New Ground ShipmentEdits

The ground shipments perform an additional edit based on the meter's SCNC (Standard Carrier Numeric Code) value and other configurations.

1.6.1 Error Codes

The following lists the new error codes for the Ground Shipments. For more details, refer to Appendix D of the *FedEx Ship Manager® Server Transaction Coding Reference Guide*.

Table 8. Ground Shipment Edits - New Error Codes

Error Code	Error Message	Update
2993	The currently configured SCNC label format code has been temporarily suspended. Please update the configuration or contact your normal FedEx support channel.	New error code. Ground shipment fails.

1.7 New Unit of Measure Values

For the Dangerous shipments, FSMS now performs Unit of Measure (UOM) conversion to compute Q- Value.

1.7.1 Field Update

The following lists the updates made for the Dangerous Goods (DG) Unit of Measure field. For more details, refer to Appendix A of the *FedEx Ship Manager® Server Transaction Coding Reference Guide*.

Table 9. Unit of Measure - Modified Fields

Field ID	Field Name	Update	Affected Transactions
471	Dangerous Goods/HazMat Unit of Measure (UOM)	Added new values for this existing field.	<ul style="list-style-type: none"> - 020 Global ShipRequest - 060 FreightCreateBOLRequest - 037 Email LabelRequest - 025 RateAvailableServiceRequest
	Description This tag supports the following UOM values for EXPRESS Dangerous Goods Shipping <ul style="list-style-type: none"> <li style="width: 25%;">• L – Liters <li style="width: 25%;">• ml – milliliters <li style="width: 25%;">• dl – deciliters <li style="width: 25%;">• kl – kiloliters <li style="width: 25%;">• kg – kilograms <li style="width: 25%;">• g – grams <li style="width: 25%;">• mg – milligrams <li style="width: 25%;">• t - ton (metric) 		

1.7.2 Error Codes

The following lists the new error codes for the Dangerous Goods Shipments. For more details, refer to Appendix D of the *FedEx Ship Manager® Server Transaction Coding Reference Guide*.

Table 10. Unit of Measure - New Error Codes

Error Code	Error Message	Update
3028	The Unit of Measurement does not match the selected DG.	New error code. Dangerous goods shipment fails if 471 - Dangerous Goods/HazMat Unit of Measure (UOM) was provided with an invalid value.

1.8 Label Changes

1.8.1 Human Readable Barcode Encryption

FedEx Ground Human Readable Barcode on labels is now encrypted. SCNC codes "9631/None", "9632/2D Custom", "9632/2D FSMS" and "9633/SSCC 18" encrypts human readable barcode on labels.

1.9 Intra-India CODEdits

This feature alters an existing COD edit check for intra-India shipments. The COD amount to collect can now be as much as the invoice limit for the service, instead of the previous requirement for it to equal the invoice amount of the shipment.

FedEx Ship Manager Server implements following new edits for Intra-India COD shipments

COD amount to collect edit for SO/XS
<p>Service Type, tag 1274 is equal to '05' or '20', and the COD amount to collect, tag 53, is less than or equal to 0 or is greater than 5,000,000 India Rupee (INR), and the COD collection type, tag 3000, IS NOT equal to '3', for CASH, and the COD collection type, tag 3000, IS equal to one of the following:</p> <ul style="list-style-type: none"> • 4- Company Check or • 5- Personal Check or • 6- Demand Draft or • 7- Pay Order
COD amount to collect edit for F1
<p>Service Type, tag 1274 is equal to '70', and the COD amount to collect, tag 53, is less than or equal to 0 or is greater than 10,000,000 India Rupee (INR), and the COD collection type, tag 3000, IS NOT equal to '3', for CASH, and the COD collection type, tag 3000, IS equal to one of the following:</p> <ul style="list-style-type: none"> • 4- Company Check or • 5- Personal Check or • 6- Demand Draft or • 7- Pay Order
COD amount to collect edit for CASH payment type
<p>COD amount to collect, tag 53, is less than or equal to 0 or is greater than 20,000 India Rupee (INR), and the COD collection type, tag 3000, is EQUAL to 'CASH'</p>

1.9.1 Error Codes

The following lists the new error codes for the COD Shipments. For more details, refer to Appendix D of the *FedEx Ship Manager® Server Transaction Coding Reference Guide*.

Table 11. Intra-India COD - New Error Codes

Error Code	Error Message	Update
2492	COD amount is not within the limits for the service selected.	New error code. COD shipment fails.
2258	COD amount is not within the limits for this collection type.	New error code. COD shipment fails.

2 Rating Updates

2.1 Reclassification of Clearance Entry Fee (CEF)

FedEx Ship Manager Server version 16.0.1 has now reclassified the Clearance Entry Fee (CEF) from a transportation surcharge to an ancillary fee. This provides the ability to bill the CEF and associated taxes along with duties and taxes to the shipper, recipient or third party. The applicable Clearance Entry Fee is included in the shipper's courtesy rate quote only if the shipper is the payer of duties and taxes.

2.1.1 Field Update

FSMS returns new rating fields in 120 and 125 Reply Transactions for an international ground shipment with broker inclusive option. FSMS also renames the Dynamic Surcharge Code and Dynamic Surcharge Value fields. For more details, refer to Appendix A of the FedEx Ship Manager® Server Transaction Coding Reference Guide. FSMS has added following new fields for Ancillary Fees and Taxes.

Table 12. Ancillary Fees and Taxes - New Fields

Field ID	Field Name	Update	Affected Transactions
7600	TotalAncillaryFeesandTaxes	New field	- 020 Global ShipRequest - 025RateAvailableServiceRequest
	Description		
	Total Ancillary Fees and Taxes field indicates the discounted total amount returned for shipment level fees and taxes that are not based on transportation charges or commodity level estimated duties and taxes.		
	Type: N	Minimum Length: NA	Maximum Length: 11.2
	Multiple Occurrence: N	Input/Output: Output	Carrier: FXFG
Valid Values (if applicable or NA): NA Default Value (if applicable or NA): NA Optionality (Required, Optional, Conditional – state why or NA): optional Shipment vs. Piece vs. Commodity Level: Shipment level			

Field ID	Field Name	Update	Affected Transactions
7601	List Total Ancillary Fees and Taxes	New field	- 020 Global ShipRequest - 025RateAvailableServiceRequest
	Description		
	List Ancillary Fees and Taxes field indicates the list amount returned for shipment level fees and taxes that are not based on transportation charges or commodity level estimated duties and taxes.		
	Type: N	Minimum Length: NA	Maximum Length:11.2
	Multiple Occurrence: N	Input/Output: Output	Carrier: FXFG
Valid Values (if applicable or NA):NA Default Value (if applicable or NA): NA Optionality (Required, Optional, Conditional – state why or NA): optional Shipment vs. Piece vs. Commodity Level: Shipment level			
7602	Alternate Total Ancillary Fees and Taxes	New field	- 020 Global ShipRequest - 025RateAvailableServiceRequest
	Description		
	Alternate Total Ancillary Fees and Taxes field indicates the alternate total fee returned for shipment level fees and taxes that are not based on transportation charges or commodity level estimated duties and taxes.		
	Type: N	Minimum Length: NA	Maximum Length:11.2
	Multiple Occurrence: N	Input/Output: Output	Carrier: FXFG
Valid Values (if applicable or NA):NA Default Value (if applicable or NA): NA Optionality (Required, Optional, Conditional – state why or NA): optional Shipment vs. Piece vs. Commodity Level: Shipment level			

Field ID	Field Name	Update	Affected Transactions
7603	Total Net Charge with Ancillary Fees and Taxes	New field	- 020 Global ShipRequest - 025RateAvailableServiceRequest
	Description		
	Total Net Charge with Ancillary Fees and Taxes field indicates the discounted fees and taxes returned for sum of total net charge and total ancillary fees and taxes.		
	Type: N	Minimum Length: NA	Maximum Length: 11.2
	Multiple Occurrence: N	Input/Output: Output	Carrier: FXFG
Valid Values (if applicable or NA):NA Default Value (if applicable or NA): NA Optionality (Required, Optional, Conditional – state why or NA): optional Shipment vs. Piece vs. Commodity Level: Shipment level			
7604	ListTotalNetChargewith AncillaryFeesandTaxes	New field	- 020 Global ShipRequest - 025RateAvailableServiceRequest
	Description		
	List Total Net Charge with Ancillary Fees and Taxes field indicates the list total fees and taxes returned for sum of total net charge and total ancillary fees and taxes.		
	Type: N	Minimum Length: NA	Maximum Length: 11.2
	Multiple Occurrence: N	Input/Output: Output	Carrier: FXFG
Valid Values (if applicable or NA):NA Default Value (if applicable or NA): NA Optionality (Required, Optional, Conditional – state why or NA): optional Shipment vs. Piece vs. Commodity Level: Shipment level			

Field ID	Field Name	Update	Affected Transactions
7605	Alternate Total Net Charge with Ancillary Fees and Taxes	New field	- 020 Global ShipRequest - 025RateAvailableServiceRequest
	Description		
	Alternate Total Net Charge with Ancillary Fees and Taxes field indicates the alternate total amount returned for sum of total net charge and total ancillary fees and taxes.		
	Type: N	Minimum Length: NA	Maximum Length: 11.2
	Multiple Occurrence: N	Input/Output: Output	Carrier: FXFG
Valid Values (if applicable or NA):NA Default Value (if applicable or NA): NA Optionality (Required, Optional, Conditional – state why or NA): optional Shipment vs. Piece vs. Commodity Level: Shipment level			

2.1.1.1 Modified Fields

FSMS renames these rating fields to include the word "Fees", so that these fields can be used to represent the "Fees" values along with Surcharge values.

Table 13. Surcharge Fields - Modified Fields

Field ID	Field Name	Update	Affected Transactions
1945	List Dynamic Surcharge and/or Fees Code	Renamed existing field	- 020 Global Shipping transaction - 025 Rate Available Service Request
1946	List Dynamic Surcharge and/or Fees Value		
1947	Dynamic Surcharge and/or Fees Code		
1948	Dynamic Surcharge and/or Fees Value		
2848	Alternate Dynamic Surcharge and/or Fees Code		
2849	Alternate Dynamic Surcharge and/or Fees Value		

3 FedEx SmartPost Shipping

3.1 Support for Third Party Billing

FedEx Ship Manager Server version 16.0.1 now brings the Third Party Billing option to FedEx SmartPost shipments.

3.1.1 Field Update

The following lists the new fields for SmartPost Shipments. For more details, refer to Appendix A of the *FedEx Ship Manager Server (FSMS) Transaction Coding Reference Guide*.

Table 14: SmartPost Associated Account Number - New field

Field ID	Field Name	Update	Affected Transactions
9915	SmartPost AssociatedAccount Number	New field	-020GlobalShippingtransaction
Description			
This optional field is used to designate an account number that is enabled for a SmartPost return shipment when billing third party. It must be associated to the same National account that is linked to the shipping meter account number. This is not the same as the payor account number.			
Type: N		Minimum Length: 9	Maximum Length: 9
Multiple Occurrence: N		Input/Output: Both	Carrier: FDXS
Valid Values: N/A Optionality: Optional and is only valid for a SmartPost Bill Third Party Print Return or Email Label shipment. Shipment vs Piece Level: Shipment.			

3.2 New SmartPost Service Type edits

FSMS has implemented new warnings for the scenarios when both Tag#1274 (Service Type) and Tag#2417 (SmartPost Service Type/Postal Indicia) are used with two different valid SmartPost service types. It is recommend that tag 1274 (Service Type) should be used for SmartPost Services instead of tag 2417 (SmartPost Service Type/Postal Indicia).

3.2.1 Field Updates

The following lists the Service Type field modifications for SmartPost Shipments. For more details, refer to Appendix A of the *FedEx Ship Manager® Server Transaction Coding Reference Guide*.

Table 15. SmartPost Service Type - New values – Modified Fields

Field ID	Field Name	Update	Affected Transactions
23	Pay Type	Added new values for this existing tag.	- 020GlobalShippingtransaction - 037 EmailLabel Request
	Description This existing field ID supports the following additional option for SmartPost outbound and return shipments. <ul style="list-style-type: none"> 3 - Bill Third Party 		
1274	Service Type	Added new values for this existing tag.	- 020 Global Shipping transaction
	Description Added the following new values: SB - SmartPost Bound Printed Matter SP - SmartPost Parcel Select SR - SL - SmartPost Parcel Select Lightweight SM - SmartPost Returns SmartPost Media		
2417	SmartPost Service Type/Postal Indicia	Tag#2417 is now obsolete.	- 020GlobalShippingtransaction - 037 EmailLabel Request - 050ServiceTypes&Special Services Transaction
	Description Tag#2417 is now obsolete. Please use tag 1274 instead.		

3.2.2 Error and Warning Codes

The following lists the new error and warning codes for the SmartPost Shipments. For more details, refer to Appendix D of the *FedEx Ship Manager® Server Transaction Coding Reference Guide*.

Table 16. SmartPost Shipment Errors - New Error Codes

Error Code	Error Message	Update
2551	Invalid Returns Shipment Indicator.	New error code. SmartPost return shipment fails when tag#1274 (Service Type) is set to "SR" and tag#2382 (Return Shipment Indicator) is set with a value other than "2"

Table 17. SmartPost Shipment Warnings - New Warning Codes

Warning Code	Warning Message	Update
5143	Field IDs 2417 and 1274 should not be used together. The value of field ID 1274 shall take precedence over field 2417.	New warning code. SmartPost shipment is successful. The value of tag#1274 (Service Type) takes precedence over tag# 2417 (SmartPost Service Type/PostalIndicia).
5144	Field IDs 2417 and 1274 should not be used together. This action will generate a Ground shipping label.	New warning code. SmartPost shipment is successful.
5145	Field IDs 2417 and 1274 should not be used together. This action will generate an Express shipping label.	New warning code. SmartPost shipment is successful.

3.3 Automatic Download of SmartPost Tracking Numbers Range

FSMS now allows automatic download.

3.3.1 Outbound Tracking NumberRange

During reconcile, if no future tracking range exists, FSMS software now requests one.

3.3.2 Return Tracking NumberRange

During reconcile, if no future tracking range exists for SmartPost returns delivery confirmation number (DCN), FSMS software now requests one.

4 Dangerous Goods

4.1 Documentation Data Upload & Shipping

FedEx now offers a standard data structure and transmission protocol for 3rd parties to upload DG/Hazmat documentation shipment data to be used by FedEx Express, FedEx Ground and FedEx Freight. This protocol handles currently applicable regulations (IATA/ICAO, 49 CFR, ADR) and additional Hazmat transport regulations as needed.

A New Dangerous Goods Data Web Service is created with new methods for the DG data upload mode and the connection between the uploaded DG data from the Third Party to the shipment (label creation) itself.

4.1.1 Field Updates

FSMS provides new data elements that can be designated at ship time with Dangerous Goods (DG) Data Upload mode. Also adds a new tag to specify the Dry Ice Weight at shipment level. The following lists the modified fields for Dangerous Goods Shipments. For more details, refer to Appendix A of the *FedEx Ship Manager® Server Transaction Coding Reference Guide*.

Table 18. Dangerous Goods Data Upload & Shipping - Modified Fields

Field ID	Field Name	Update	Affected Transactions
7232	Dangerous Goods (DG) Data Upload mode	New field	- 020GlobalShippingtransaction - 037EmailLabelDescription
	Description		
	The Dangerous Goods Data Upload mode tag is the data element that connects the finalization of a shipment, i.e. label creation, with the Dangerous Goods data previously uploaded via a 3rd party or proprietary software system integrated with FedEx Dangerous Goods Data Service (DGDS) Web Service.. This field should be used to indicate that Dangerous Goods commodity information for Express IATA, Ground Hazmat, or Express ADR was previously uploaded. This field MUST be used in conjunction with tag 1222 Pre-assigned Tracking Number which should contain the tracking number of the package/handling unit which was previously uploaded via the 3rd party or customer's proprietary system to FedEx DGDS.		
	Type: A	Minimum Length: 1	Maximum Length: 1
	Multiple Occurrence: Y	Input/Output: Both	Carrier: FDXE, FDYG
Valid Values: Y = Yes or N = No		Default: N	
Optionality: Optional			
Shipment vs Package Level or Commodity or Combination: Package Level			

4.1.2 Error Codes

The following lists the new error and warning codes added for the Dangerous Goods Shipments. For more details, refer to Appendix D of the *FedEx Ship Manager® Server Transaction Coding Reference Guide*.

Table 19. Dangerous Goods - New Error Codes

Error Code	Error Message	Update
3137	Your shipment is not allowed because of dry ice violations that limit your shipping options. If you have any questions, please call 1.800.GoFedEx 1.800.463.3339 and press “81” for the FedEx Dangerous Goods/Hazardous Materials hotline.	New error code.
3138	Your shipment is not allowed because of hazardous materials violations that limit your shipping options. If you have any questions, please call 1.800.GoFedEx 1.800.463.3339 and press “81” for the FedEx Dangerous Goods/Hazardous Materials hotline.	New error code.
3139	Your shipment is not allowed because of dangerous goods, hazardous materials or dry ice violations that limit your shipping options. If you have any questions, please call your local FedEx customer service.	New error code.
3140	Your shipment is not allowed because of {SPECIAL_SERVICE_TYPE*} violations that limit your shipping options. If you have any questions, please call your local FedEx customer service.	New error code.
3146	Dangerous Goods Data Upload Mode is not supported with Total Piece Total Weight Shipping.	New error code.
3100	Commodities in package cannot be combined.	New error code.
3147	Dangerous goods data upload mode is not supported for simplified dry ice shipping.	New error code.
3148	The Dangerous Goods Data Upload Mode is not available, please try again later.	New error code.
3149	The ship date cannot be earlier than the previously uploaded Dangerous Goods ship date for tracking number {TRACKING_NUMBER}.	New error code.
3150	Dangerous goods data for tracking number {TRACKING_NUMBER} is not found.	New error code.
3151	Your Sender or Origin Country Code does not match the previously uploaded dangerous goods information for tracking number {TRACKING_NUMBER}.	New error code.
3152	Your Sender or Origin Country Code does not match the previously uploaded dangerous goods information.	New error code.

Error Code	Error Message	Update
3153	Your Recipient or Hold At Location Country Code does not match the previously uploaded dangerous goods information for tracking number {TRACKING_NUMBER}.	New error code.
3154	Your Recipient or Hold At Location Country Code does not match the previously uploaded dangerous goods information.	New error code.
3155	Your service type is inconsistent with the previously uploaded dangerous goods information for tracking number {TRACKING_NUMBER}.	New error code.
3156	Your service type is inconsistent with the previously uploaded dangerous goods information.	New error code.
3157	For tracking number {TRACKING_NUMBER}, the dangerous goods data was uploaded using a different meter number and account. Please use that meter number and account to process this shipment.	New error code.
3158	For tracking number {TRACKING_NUMBER}, the uploaded dangerous goods data has already begun shipping on a different meter number and account. Please use that meter number and account to process this shipment.	New error code.
3159	Dangerous Goods Data Upload mode requires the uploaded tracking number to also be provided. Please provide this information and try again.	New error code.
3169	The Dangerous Goods Data Upload mode is not available, use a legacy dangerous goods data mode.	New error code.
3160	The dangerous goods commodity data previously uploaded for tracking number {TRACKING_NUMBER} does not have the proper UN ID for Dry Ice.	New error code.
3161	The package dry ice weight does not match the package dry ice weight for UN1845 previously uploaded for tracking number {TRACKING_NUMBER}.	New error code.
3162	The total shipment dry ice weight does not match the total shipment dry ice weight for UN1845 previously uploaded for this shipment.	New error code.
3164	The Dry Ice information was not included with the uploaded Dangerous Goods Commodity data for a previously processed package. The Dry Ice information is required under this regulation.	New error code.
3165	The Dry Ice information must be included with the uploaded Dangerous Goods Commodity data for this shipment. The Dry Ice information is required under this regulation.	New error code.

Error Code	Error Message	Update
3166	The Dry Ice information was not included with the uploaded Dangerous Goods Commodity data for package {PACKAGE_INDEX}. The Dry Ice information is required under this regulation.	New error code.
3167	The Dry Ice information should only be provided when uploading the dangerous goods commodity data under this regulation. The Dry Ice Special Service information must be removed from this transaction.	New error code.
3168	You must have {NUMBER} more dangerous good packages to process this shipment.	New error code.
3171	In order to ship {UN_ID}, please set the {SUPPLEMENTAL_FIELD} to have a value of {REQUIRED_VALUE}. If you have any questions, please call your local FedEx customer service.	New error code.
3172	This Tracking Number is not part of the same DG Data Upload as the other packages in the shipment. All packages in a shipment must be part of the same DG Data Upload	New error code.
3173	The Tracking Number {0} provided is not eligible for Automation shipping.	New error code.
3174	The uploaded dangerous goods data is no longer valid for tracking number {TRACKING_NUMBER}. Please update the dangerous goods data and reprocess the transaction	New error code.
3175	Your shipment is not allowed because prior authorization by FedEx is needed to ship {0}. If you have any questions, please call your local FedEx customer	New error code.
3176	Your shipment is not allowed because of dangerous goods, hazardous materials or dry ice violations involving {0}. If you have any questions, please call your local FedEx customer service.	New error code.

4.1.3 New Warning Codes

Table 20. Dangerous Goods - New Warning Codes

Warning Code	Warning Message	Update
5134	Your account has dangerous goods violations. Your account could be disabled for this service if any further violations occur. If you have any questions, please call 1.800.GoFedEx 1.800.463.3339 and press "81" for the FedEx Dangerous Goods/Hazardous Materials hotline.	New warning code.
5135	Your account has dry ice violations. Your account could be disabled for this service if any further violations occur. If you have any questions, please call 1.800.GoFedEx 1.800.463.3339 and press '81' for the FedEx Dangerous Goods/Hazardous Materials hotline	New warning code.
5136	Your account has hazardous materials violations. Your account could be disabled for this service if any further violations occur. If you have any questions, please call 1.800.GoFedEx 1.800.463.3339 and press "81" for the FedEx Dangerous Goods/Hazardous Materials hotline.	New warning code.
5137	Your account has dangerous goods, hazardous materials or dry ice violations. Your account could be disabled for this service if any further violations occur. If you have any questions, please call your local FedEx customer service.	New warning code.
5138	Your account has {SPECIAL_SERVICE_TYPE*} violations. Your account could be disabled for this service if any further violations occur. If you have any questions, please call your local FedEx customer service.	New warning code.
5140	You may not be able to complete the dangerous goods shipment after 90 calendar days. Your Dangerous Goods Data may need to be re-uploaded to process this shipment.	New warning code.

5 Notification Changes

As part of notifications updates, FSMS implements the following changes:

- Removes Wireless notification format type option
- Adds Estimated Delivery Notification as a new option
- Adds new validations for existing notifications.

5.1 Estimated Delivery Notification

You now see a new notification type called "Estimated Delivery Notification". This triggers a notification the morning of estimated package delivery. Also, "wireless" is no longer a format type. The format types that distributed customers can choose from are "Email (HTML)" and Email (Plain Text).

5.1.1 Field Updates

The following lists the newly added and modified Delivery Notification fields. For more details, refer to Appendix A of the *FedEx Ship Manager® Server Transaction Coding Reference Guide*.

Table 21. Notifications - New Fields

Field ID	Field Name	Update	Affected Transactions
7213	Shipper Estimated Delivery Notification	New field	- 020GlobalShipping transaction - 037EmailLabelDescription - 060FreightCreateBOLRequest
	Description Provides notification of an estimated delivery information of a shipment to a shipper's email.		
	Type: Alpha	Minimum Length:1	Maximum Length:1
	Multiple Occurrence: N	Input/Output: Both	Carrier: FDXE, FDXG, FXFR
	Valid Values: Y – Yes, N – No, Default Value: 'N'		

Field ID	Field Name	Update	Affected Transactions
7214	Recipient Estimated Delivery Notification	New field	- 020GlobalShipping transaction - 037EmailLabelDescription - 060FreightCreateBOLRequest
	Description Provides notification of an estimated delivery information of a shipment to a recipient's email.		
	Type: Alpha	Minimum Length:1	Maximum Length:1
	Multiple Occurrence: N	Input/Output: Both	Carrier: FDXE, FDXG, FXFR
	Valid Values: Y – Yes, N – No, Default Value: 'N' Optionality (Required, Optional, Conditional, or N/A): Optional Shipment vs. Piece vs Commodity Level: Shipment		
7215	Broker Estimated Delivery Notification	New field	- 020GlobalShipping transaction - 037EmailLabelDescription - 060FreightCreateBOLRequest
	Description Provides notification of an estimated delivery information of a shipment to a broker's email.		
	Type: Alpha	Minimum Length:1	Maximum Length:1
	Multiple Occurrence: N	Input/Output: Both	Carrier: FDXE, FDXG, FXFR
	Valid Values: Y – Yes, N – No, Default Value: 'N' Optionality (Required, Optional, Conditional, or N/A): Optional Shipment vs. Piece vs Commodity Level: Shipment		
7216	Other Estimated Delivery Notification	New field	- 020GlobalShipping transaction - 037EmailLabelDescription - 060FreightCreateBOLRequest
	Description Provides notification of an estimated delivery information of a shipment to other's email(s).		
	Type: Alpha	Minimum Length:1	Maximum Length:1
	Multiple Occurrence: N	Input/Output: Both	Carrier: FDXE, FDXG, FXFR
	Valid Values: Y – Yes, N – No, Default Value: 'N' Optionality (Required, Optional, Conditional, or N/A): Optional Shipment vs. Piece vs Commodity Level: Shipment		

5.2 Remove Wireless Notification Format Type

Wireless Email Notification Format Type is deprecated.

Table 22. Notifications - Modified Fields

Field ID	Field Name	Update	Affected Transactions
1964	Other Notification Format Type	'W'-Wireless Email Notification Format Type shall be deprecated	<ul style="list-style-type: none"> - 020 Global Shipping transaction - 037 Email Label Description - 060 Freight Create BOL Request
1965	Shipper Notification Format Type		
1966	Recipient Notification Format Type		
1967	Broker Notification Format Type		

5.3 New validations for existing Notifications

5.3.1 Warning Codes

The following lists the new warning codes added for the Delivery Notifications. For more details, refer to Appendix D of the *FedEx Ship Manager® Server Transaction Coding Reference Guide*.

Table 23. Notifications - New Warning Codes

Warning Code	Warning Message	Update
5132	Estimated Delivery notification is not available.	New warning. Shipment is successful. All Estimated Delivery Notification tags (7213 - Sender, 7214 - Recipient, 7215 - Broker and or 7216 - Other) are ignored.
5133	Email address is required for notifications. Notifications will not be available for this shipment	New warning. Shipment is successful. All Notification tags are ignored.

6 Report Changes

6.1 New IPD/IED/IDF Customs Detail Report

FSMS now supports a new report, IPD/IED/IDF Customs Detail Report, which helps during IPD/IED/IDF customs processing.

6.1.1 New Layout

The following lists the layout for the New IPD/IED/IDF Customs Detail Report.

Figure 1. IPD/IED/IDF Customs Detail Report

IPDCDR - FedEx IPD/IED/IDF CUSTOMS DETAIL MAWB: 595261675565 FORM ID: 0491 ORIG ID: NQAA DEST ID: YQGA Page 1 of 3

MAWB CONSOLIDATION DETAIL

Shipment Purpose: Personal Effects	Customer Reference: RedZone Step 013 Intl Express-IPD Maste	
Terms of Sale: FCA	Currency Code: USD	Service Type: 18 - IPD
Bill Trans Charges: 314114728	Weight Type: LBS	
Bill Duties/Taxes/Fees: 314114728	Total Packages: 2.00	Total Addresses: 1.00
Related Parties: N	Ship Date: 19NOV2015	

Exporter/Shipper:	Ship To (Consignee):
Akshay	VIA FEDEX IPD
SYNTEL LIMITED	3151 Aylmer Rd
Memphis state	
Memphis state line 1	
Memphis	Richmond
State/Province, Country, Postal: TN, US, 38117	State/Province, Country, Postal: BC, CA, V9Z8Z8
Phone #: 9012634558 Tax ID#: 123456789	Phone #: 6042797700 Tax ID#: 1456382

IPDCDR - FedEx IPD/IED/IDF CUSTOMS DETAIL Page 2 of 3

CRN Tracking #: 595261675576 **CRN Weight:** 10.00 LBS **CRN FORM ID:** 0491 **Destination LOC ID:** YQGA

Customer Reference: RedZone Step 013 Intl Express-IPD CRN 1

CRN Recipient:	Destination Country: CA
Company: Syntel	
Contact: Chan	City: Aubervilliers
Address 1: 129 Avenue Victor Hugo	State/Province, Postal: ON, N8T1E9
Address 2: RedZone Step 013 Intl Express-IPD C	
Phone #: 148648338 Tax ID#: 123456789	

COMMODITY PURPOSE	HS CODE	PART #	CofM	Weight	Qty	UofM	Unit Value	Total Value
CONSUMER USE DESC: Books1	123524	1000	US	10.00	2	IN	1.00	2.00
CONSUMER USE DESC: Paper 1	123524	1001	US	10.00	2	IN	1.00	2.00
CONSUMER USE DESC: Pens1	123524	1002	US	10.00	2	IN	1.00	2.00
CONSUMER USE DESC: Notebook1	123524	1003	US	10.00	2	IN	1.00	2.00
CONSUMER USE DESC: Backpack1	123524	1004	US	10.00	2	IN	1.00	2.00

CRN Total Customs Value: 10.00 USD

6.1.2 Field Updates

The following lists the updates made for the Reports Code field. For more details, refer to Appendix A of the *FedEx Ship Manager® Server Transaction Coding Reference Guide*.

Table 24. Reports Changes - Modified Field

Field ID	Field Name	Update	Affected Transactions
1373	Report Code	Added new valid values for existing tag	<ul style="list-style-type: none"> - 095 ReprintTransaction - 070 Meter Query or Configuration Transaction
	Description FedEx Ship Manager Server shall support the following new values <ul style="list-style-type: none"> • 080 - IPD/IED Customs Detail Report • 081 - IDF Customs Detail Report. 		

6.2 Enhancements to EOD Close Reports

The End Of Day (EOD) Close Reports are generated when the close operation is performed for a meter. Following enhancement aims for improving customer experience with End of Day close reports.

6.2.1 Enable printing for only a subset of the EOD Close Reports

This enhancement intends to optimize EOD report experience by disabling by default the unnecessary report printing. You also have the option to turn the disabled reports back on.

By default, printing of the following end of day reports is disabled at End of Day Close for all FSMS meters:

- Courier
- Invoice
- Shipment

7 Software Configuration Updates

7.1 Windows Support

With version 16.0.1, FedEx Ship Manager Server installation brings the following changes.

Note: Operating system support includes any updates or service packs provided by Microsoft.

For more details, refer to the *FedEx Ship Manager® Server Installation and Configuration Guide*.

7.1.1 New Windows Operating System Support

FedEx Ship Manager Server installation is now supported for Windows® 10 Operating System.

7.1.2 Discontinued Windows Operating System Support

FedEx Ship Manager Server installation no longer supports the following operating systems:

- Windows 2003 SP3
- Windows 2003 R2 Server Enterprise (for Clustering) with iSCSI initiators
- Windows XP SP2
- Windows Vista Business

7.1.3 .Net Framework Upgrade

The .Net Framework version used by FedEx Ship Manager Server is now upgraded to 4.5. The FedEx Ship Manager Server installation installs this .Net Framework version if not already been installed.

7.2 Configuration Utility Updates

7.2.1 Check for ConfigManagerService

If the Config Manager Service is not running and the Config Manager Utility is launched, a warning window appear with the following Text information:

“The ConfigManager Service is not running. None of your changes will be saved.”

7.2.2 Check for FedEx AdmnService

If the Admin service is not running and the Demand Download Utility is launched, a warning window appear with the following Text information:

“The FedEx AdmnService is not running. Requested components may not implement.”

7.2.3 Check for FedEx ClientService

If the Client service is not running and the Demand Download Utility is launched, a warning window appear with the following Text information:

"The FedEx Client Service is not running. Requested components may not implement."

7.2.4 Check for CommonService

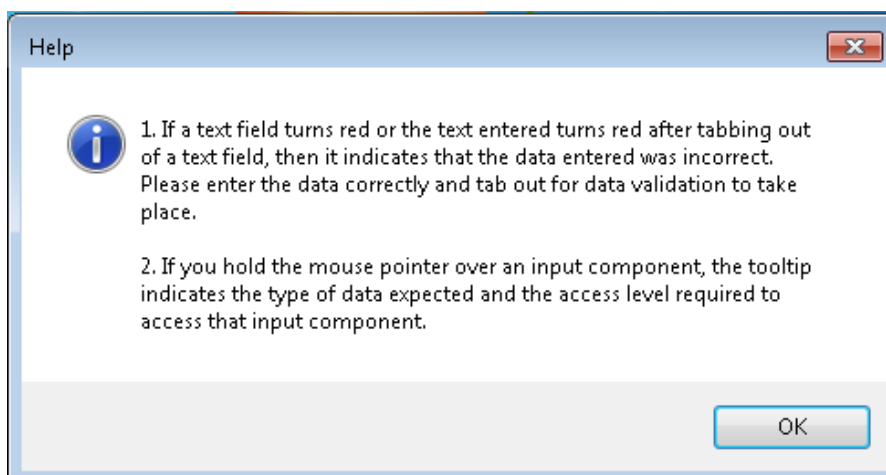
If the Common service is not running and the Demand Download Utility is launched, a warning window appear with the following Text information:

"The FedEx Common Service is not running. Requested components may not implement."

7.2.5 Help Window

If the Help Button is clicked, an information window appears.

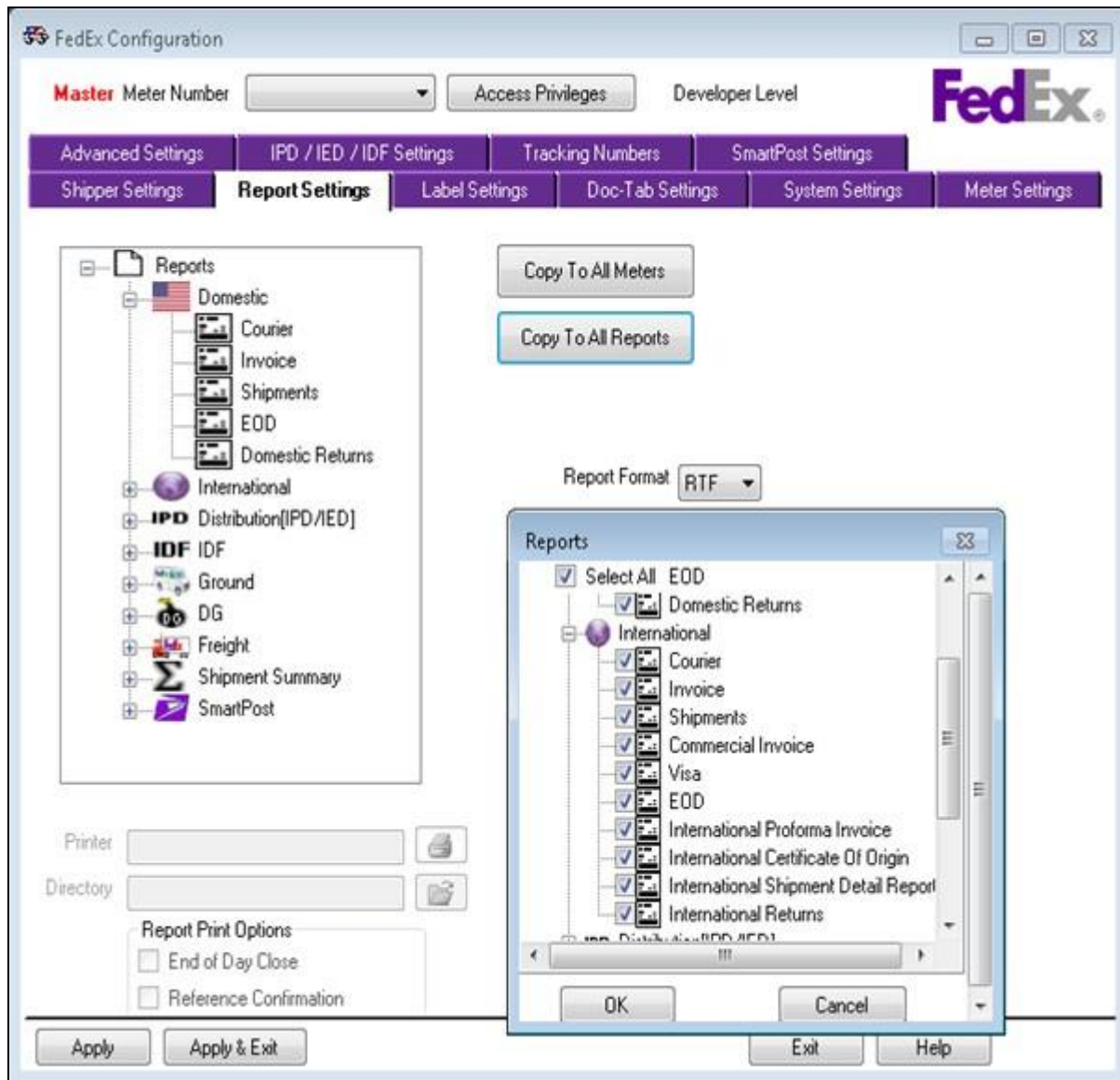
Figure 2. Help Window



7.2.6 Reports Settings Tab

When "Copy to All Reports" button is clicked on Reports Settings tab, a pop-up window is displayed, which gives customers the ability to select report(s) to configure. This pop-up window, provides the ability to the users to select all reports at once or selective reports. "Copy to All Reports" operation is then applied only to the selected reports.

Figure 3. Report Settings



For more details, refer to the *FedEx Ship Manager® Server Installation and Configuration Guide*.

7.2.7 System Settings Tab - Field updates

On the System settings tab on configuration screen, the "Use Dynamic Surcharging" checkbox shall be renamed to "Use Dynamic Surcharging and Fees".

7.2.8 Advanced Settings Tab - Field updates

On the Advanced settings tab on configuration screen, a new check box called "Transaction Date Time" is added. When this check box is checked, a Date/Time stamp will be captured with the transaction log.

FedEx Configuration

Meter Number: 000000 Access Privileges Field Level

Shipper Settings Report Settings Label Settings Doc-Tab Settings System Settings Meter Settings

Advanced Settings IPD / IED / IDF Settings Tracking Numbers

Express & Ground Hourly Upload Interval (minutes): 60 Force Close Active

Hourly Upload Retention Period (days): 14

Communication Check Interval (hours): 72

Communication Logging Retention Period (days): 3

Ground Hourly Upload Retention Period (days): 14

Tracking Logging Retention Period (days): 3

Ground Commercial Invoice Upload Retention Period (days): 14

Time Lapse To Force Upload (hours): 60

Label Buffer Retention (days): 3

Transaction Log Retention Period (days): 5

Transaction Capture

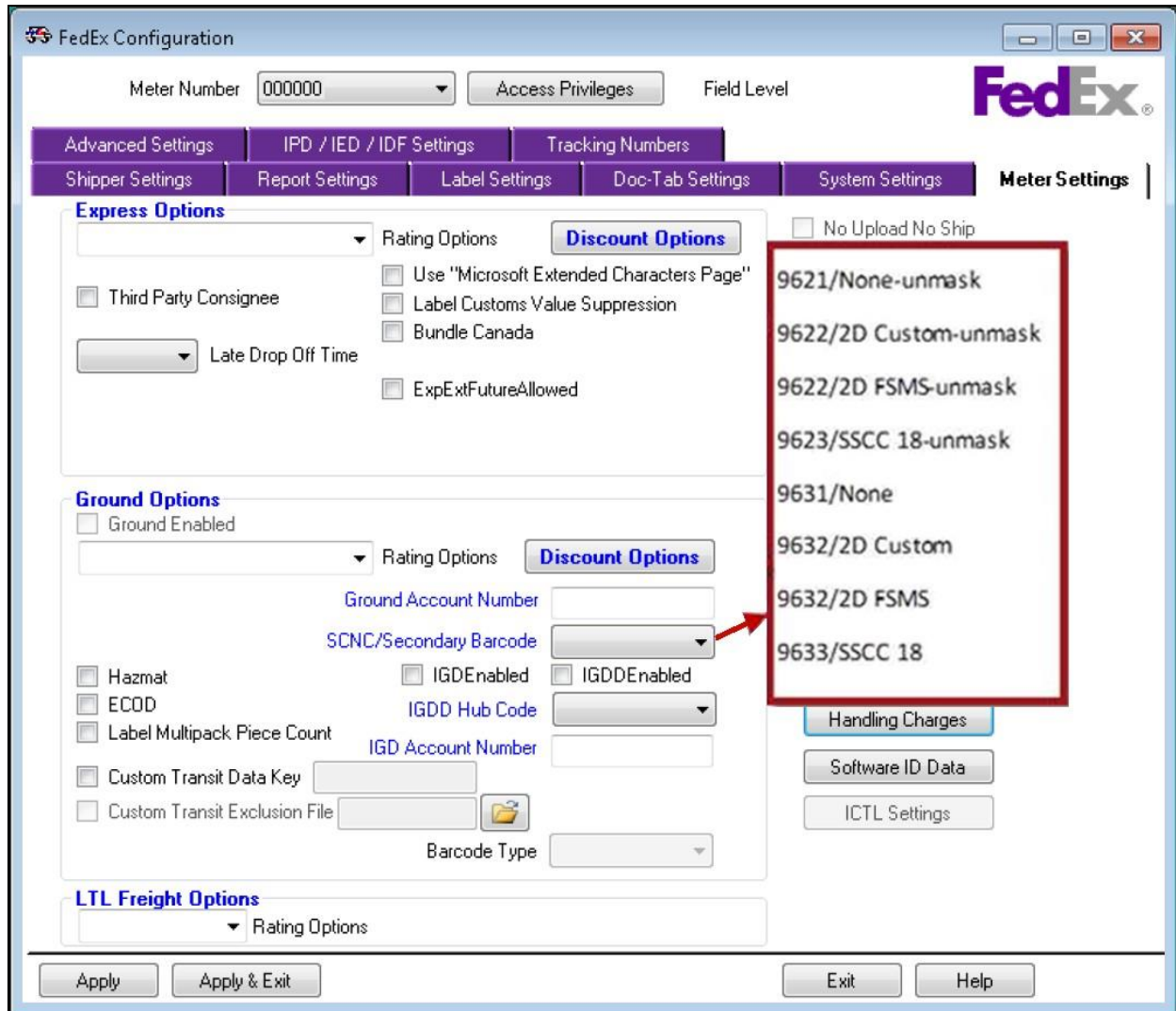
Transaction DateTime

Apply Apply & Exit Exit Help

7.2.9 Meter Settings Tab

SCNC/Secondary Barcode Drop-down on the Meter Settings tab has additional values. SCNC codes "9631/None", "9632/2D Custom", "9632/2DFSMS" and "9633/SSCC 18" encrypts human readable barcode on labels.

Figure 4. SCNC/Secondary Barcode Drop-down on the Meter Settings Tab



7.2.10 New Message Dialogs

On the System settings tab on configuration screen, the "Use Dynamic Surcharging" checkbox shall be renamed to "Use Dynamic Surcharging and Fees".

7.3 Configuration Transaction Updates

070 - Meter Query or Configuration Transaction supports the following newer configuration screen options. These existing configuration options themselves are not changing but they now can be configured via the 070 transaction.

- Express Rating Options
- Ground Rating Options
- LTL Rating Options
- ExpExtFutureAllowed
- Use Dynamic Surcharging

7.3.1 Field Update

The following lists the new fields added to the 070 - Meter Query or Configuration Transaction. For more details, refer to Appendix A of the *FedEx Ship Manager® Server Transaction Coding Reference Guide*.

Table 25. Configuration Transaction - New Fields

Field ID	Field Name	Update	Affected Transactions
3180	Express Extended Future Allowed	New field	070 - Meter Query or Configuration Transaction
Description			
This optional field is used to enable or disable the Extended Future Day shipping functionality for Express shipments.			
Type: A		Minimum Length: 1	Maximum Length: 1
Multiple Occurrence: N		Input/Output: Both	Carrier: FDXE
Valid Values:			
Y - Enables Extended Future Day Shipping N - Disables Extended Future Day Shipping			
Optionality: Optional in the 070/170 Meter Query or Configuration Transaction			
Shipment vs Piece Level: Shipment			

Field ID	Field Name	Update	Affected Transactions
3181	Use Dynamic Surcharging	New field	070 - Meter Query or Configuration Transaction
	Description		
	This optional field is used to enable or disable the Dynamic Surcharging functionality for Express shipments.		
	Type: A	Minimum Length: 1	Maximum Length: 1
	Multiple Occurrence: N	Input/Output: Output	Carrier: FDXE, FDXG, FXSP
Valid Values: Y - Enables Dynamic Surcharging N - Disables Dynamic Surcharging Optionality: Optional in the 070/170 Meter Query or Configuration Transaction Shipment vs Piece Level: Shipment			

Table 26. Configuration Transaction - Modified Fields

Field ID	Field Name	Update	Affected Transactions
2550	Transaction Capture Option	Valid values for this field are changed	070 - Meter Query or Configuration Transaction
	Description The new valid values are: <ul style="list-style-type: none"> • YY - Capture Transaction with date/time • YN - Capture Transaction without date/time • NY - Do not Capture Transaction but check date/time • NN - Capture neither transaction nor date/time Where the 1st position indicates Capture Transaction (existing functionality) and the 2 nd position indicates Capture Date/Time (new functionality). If the 2nd position is not passed in the transaction, FSMS will default to the current setting for Date/Time capture in ConfigManager utility. Default value: N		

Field ID	Field Name	Update	Affected Transactions
3025	Carrier Code	Existingtag#3025ismodified to support070transaction.	070 - Meter Query or Configuration Transaction
	Description		
	Input/Output: Both	Multiple Occurrence: Y	Carrier: FDXE, FDXG, FXFR, FDXS
Valid Values: FDXE, FDXG, FXFR, FDXS			
3062	Rate Quote Type	Existingtag#3062ismodified to support070transaction.	070 - Meter Query or Configuration Transaction
	Description		
	Input/Output: Both	Multiple Occurrence: Y	Carrier: FDXE, FDXG, FXFR, FDXS
<p>The valid values for Express and Ground rating options are: 1 - Discount Rates Only 2 - List Rates and Discount Rates 3 - No Ship-Time Rates 4 - Discount Rate, List Rate, and Alternate Rate 5 - Discount Rate and Alternate Rate</p> <p>The valid values for Freight rating options are: 1 - Discount Rates Only 3 - No Ship-Time Rates</p> <p>The valid values for SmartPost rating options are: 1 - Discount Rates Only 3 - No Ship-Time Rates 5 - Discount Rate and Alternate Rate</p>			
3121	Doc-Tab Values	Additionalvalidvaluesforthisfield	070 - Meter Query or Configuration Transaction
	Description		
Additional Valid Values: 760, 761, 762, 763, 764 and 765			

7.4 Demand Download Utilityupdates

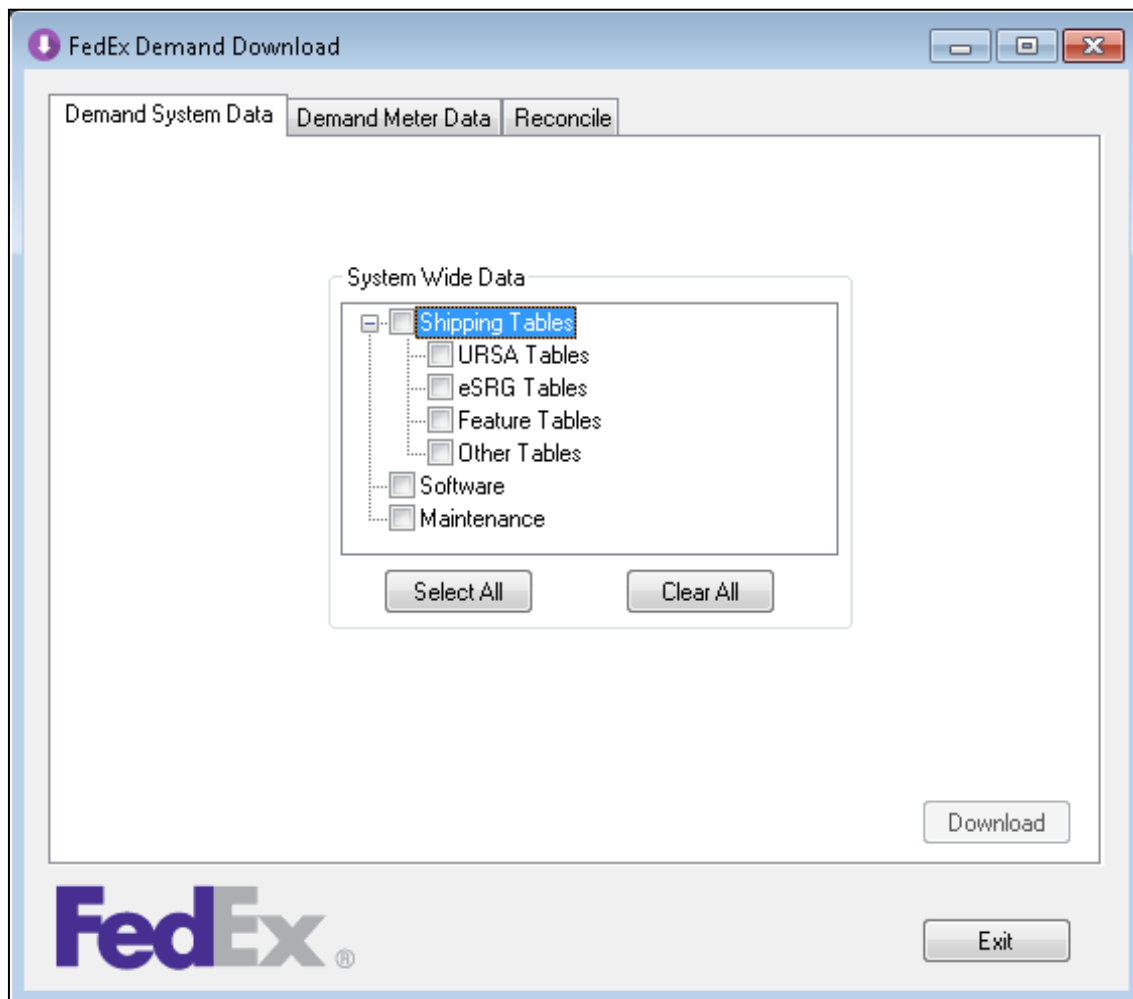
Demand Download screen now has 3 tabs: Demand System Data, Demand Meter Data and Reconcile.

7.4.1 Demand SystemData

"Demand System Data" tab has the following options:

- Shipping Tables
- URSA Table, eSRG Tables, Other Tables
- Software
- Maintenance

Figure 5. Demand System Data

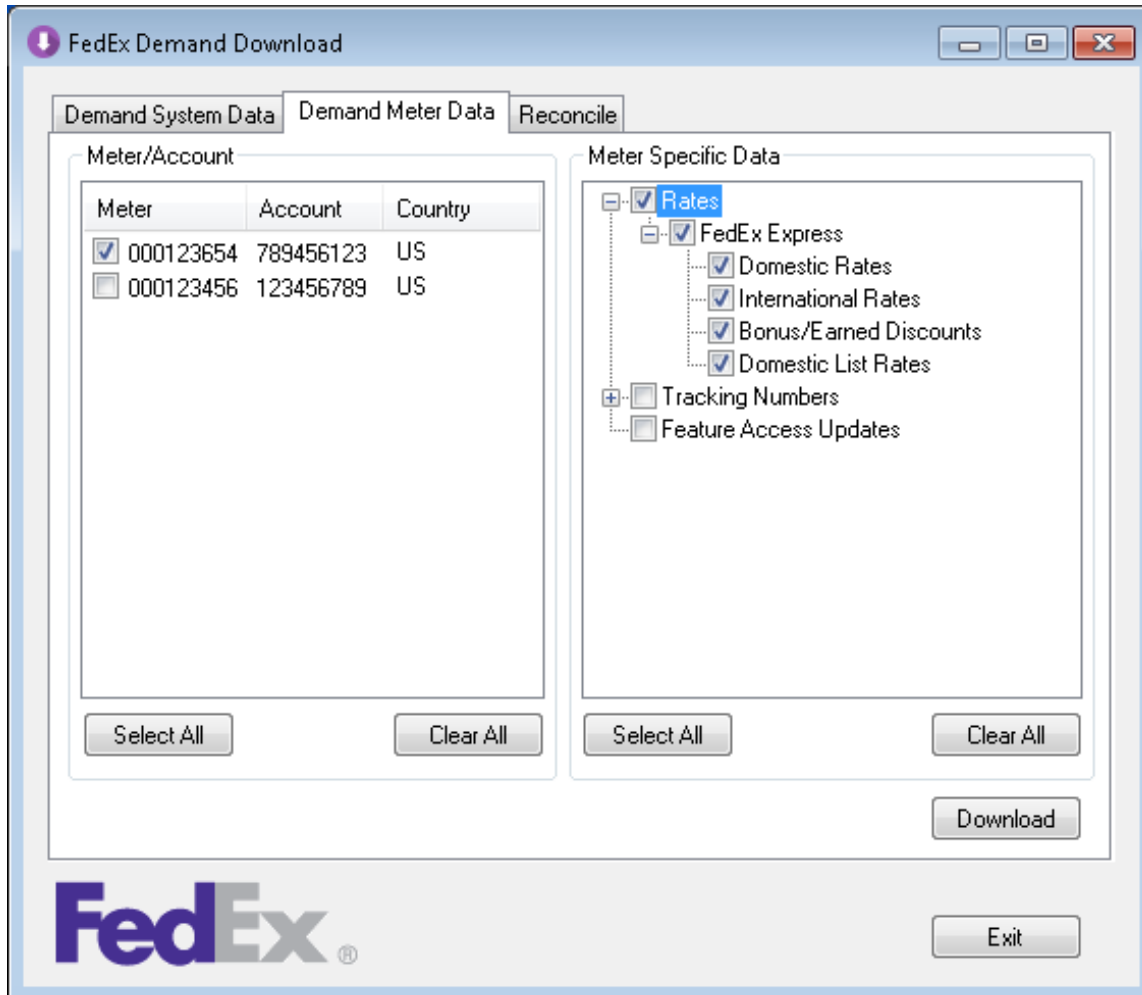


7.4.2 Demand Meter Data

"Demand Meter Data" tab has the following options:

- All the rates related to the particular meter
- Tracking Number
- Update Feature

Figure 6. Demand Meter Data

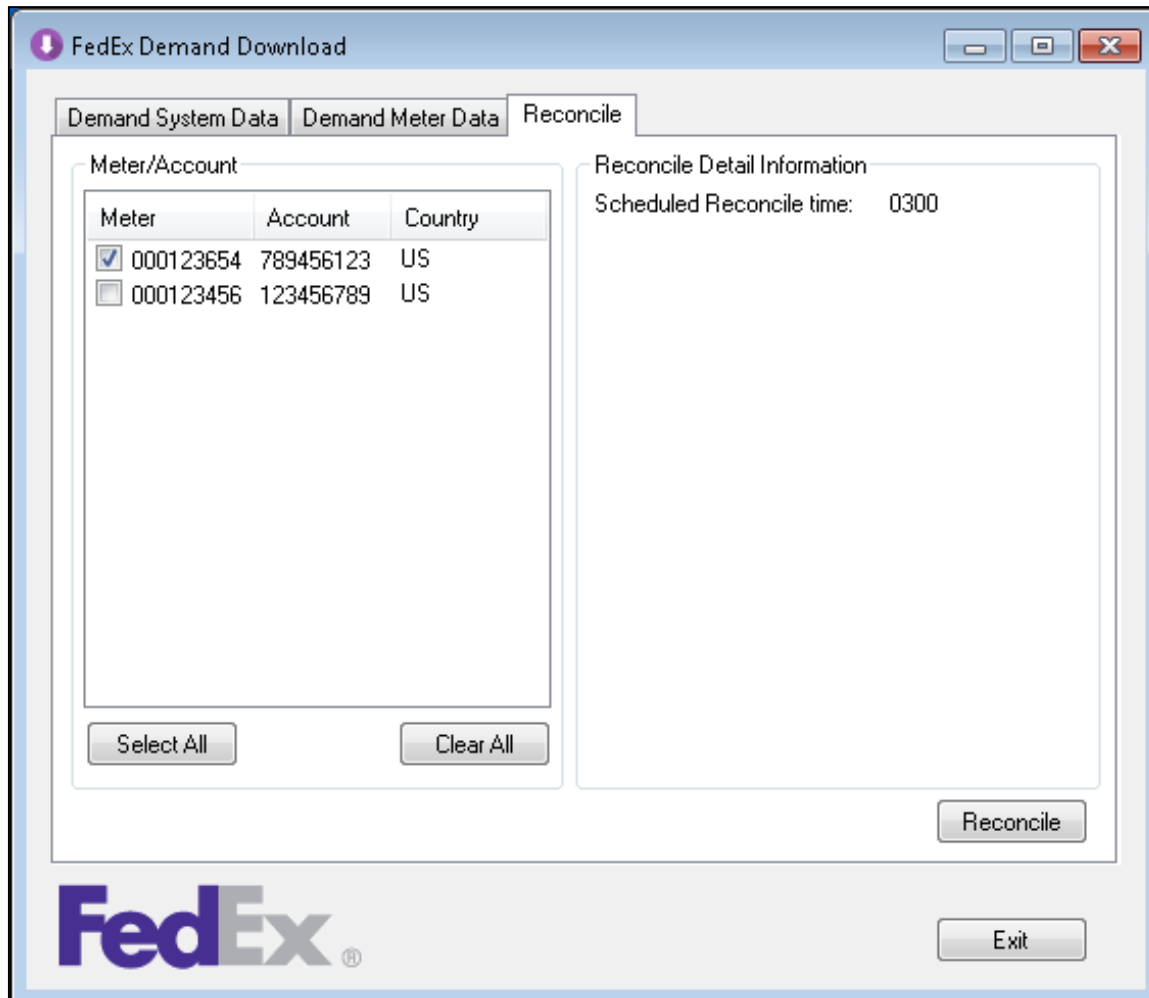


7.4.3 Reconcile

"Reconcile" tab has the following option:

- Scheduled Reconcile Time for that particular meter.

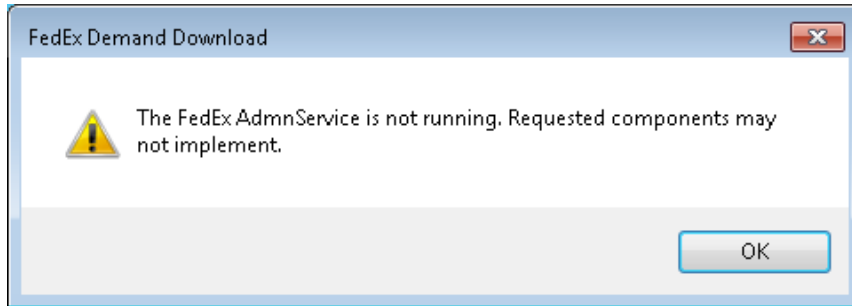
Figure 7. Reconcile on Demand Download



7.4.4 Admin Service – New MessageBox

If Admin service (AdmnService) is not running and customer attempts to use the Demand Download Utility, following warning is displayed. On Click of 'OK' button or Exit Button the window shall close.

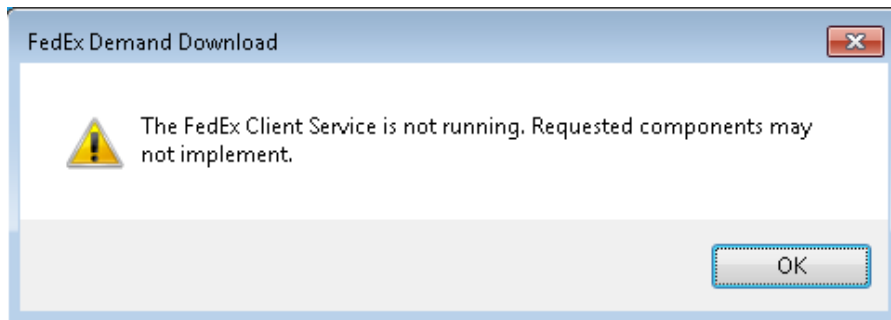
Figure 8. Admin Service - Message Box



7.4.5 FedEx Client Service – New MessageBox

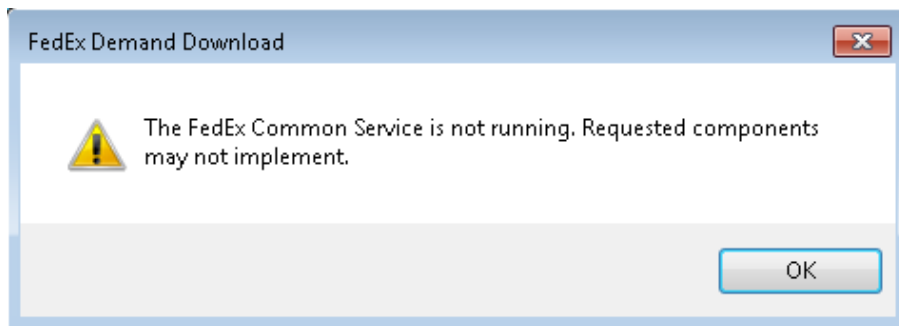
If FedEx Client service is not running and customer attempts to use the Demand Download Utility, following warning is displayed. On Click of 'OK' button or Exit Button the window shall close.

Figure 9. Client Service - Message Box



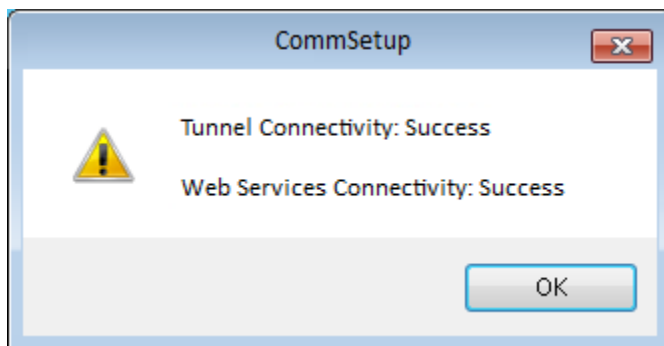
7.4.6 FedEx Common Service – New Message Box

If FedEx Common service is not running and customer attempts to use the Demand Download Utility, following warning is displayed. On Click of 'OK' button or Exit Button the window shall close.

Figure 10. Common Service - Message Box

7.5 Common Setup Utility Updates

On click of 'Test Internet Connection to FedEx' within Common Setup a pop window will appear to indicate the success or failure of either internet connectivity or web service call as follows:

Figure 11. Common Setup

7.6 Maintenance Window

Now the Maintenance window supported in 1500 has been expanded to control the download and implementation of support files.

8 System Requirements

Before you begin installing FSMS, be sure you have reviewed the guidelines that describe computer system requirements and supported printers, servers and scales. See the following table for minimum software and hardware requirements.

8.1 Minimum Software Requirements

Table 27. FedEx Ship Manager Server Minimum Software Requirements

Minimum Software Requirements	
Operating System	<p>Windows® 2008 Standard Server (32 bit) Windows® 2008 Standard Server (64 bit) Windows® 7 Professional (32 bit) Windows® 7 Professional (64 bit) Windows® 8 Windows® 8.1 Windows® 8 Pro Windows® 8.1 Pro Windows® 8 Enterprise Windows® 8.1 Enterprise</p> <p><i>Note: Any updates to Microsoft's Windows® 8, Windows® 8.1, Windows® 8 Pro, Windows® 8.1 Pro, Windows® 8 Enterprise, and Windows® 8.1 Enterprise environments are also supported.</i></p> <p>Windows® 2008 R2 Standard Server (64 bit) Windows® 2008 R2 Server Enterprise</p> <p>Notes:</p> <ul style="list-style-type: none"> - This version of FedEx Ship Manager Server is designed to work best on Windows 2008R2 and higher. Microsoft ended support for Windows XP on April 8, 2014. FedEx recommends that you upgrade to ensure your systems are not at risk. See the Microsoft website: https://www.microsoft.com/enus/windows/enterprise/end-of-support.aspx and https://support.microsoft.com/en-us/lifecycle/search/default.aspx?alpha=Windows%20Server%202003%20R2. - .Net Framework version is not present, then the installer aborts the installation of FSMS and a parameterized error message "FedEx Ship Manager" Server requires that your system has the .Net Framework version <.Net version> installed," is displayed before the installer is closed. This behavior is the same for new installs or CD upgrades.

8.2 Minimum Hardware Requirements

Table 28. FedEx Ship Manager Server Minimum Hardware Requirements

Minimum Hardware Requirements	
Processor	Quad Core Xeon E3 Processor
Memory	8 GB RAM
Hard Drive	300 GB
Network adapter	10/100/1000 Mbps
CD ROM drive	Windows compatible
Modem	Hayes compatible 56k
Ambient temperature	50 to 90 degrees Fahrenheit

Note: FedEx does not maintain and support customers' virtual environments.

8.3 Required Hardware (High Volume)

High performance hardware is recommended for shippers shipping between 40K and 100K shipments a day. The hardware is based on the existing warehouse distributed platform with the below noted upgrades.

- Processor (minimum): Dual, modern (fastest and most cores available) Xeon.
- Memory (minimum): 16 GB ECC.
- Disk:
 - Recommended SSD (solid state)
 - Space determined by shipping needs of client but not less than 1 TB.

8.4 Supported Thermal Printers

A new printer ZT410 is now supported besides the existing ZPL thermal printers.

Appendix

New Server ReportCodes

Code	Report Name
080	IPD/IED Customs Detail Report
081	IDF Customs Detail Report

New Ground DocTab Serial Numbers

Serial Number	DocTab value
760	Total Ancillary Fees and Taxes
761	List Total Ancillary Fees and Taxes
762	Alternate Total Ancillary Fees and Taxes
763	Total Net Charge with Ancillary Fees and Taxes
764	List Total Net Charge with Ancillary Fees and Taxes
765	Alternate Total Net Charge with Ancillary Fees and Taxes

Index

C

Clearance Entry Fee (CEF) 19

Commodity Purpose 12

Copy to All Reports..... 37

D

Dangerous Goods Data Upload..... 26

Dangerous Goods Unit of Measure 16

Demand Download Utility 44

E

End Of Day (EOD) Close Reports 35

Estimated Delivery Notification 31

H

Hold at FedEx Location (HAL) lookup expansion 11

Human Readable Barcode Encryption 17

I

IPD/IED/IDF Customs Detail Report 34

S

SCNC/Secondary Barcode..... 40

System Requirements..... 49

T

Transaction Capture Option..... 42

Transaction Date Time 39

W

Windows Operating System Support..... 36

Wireless Notification Format Type..... 33