



What's New in FedEx Ship Manager® 4000

Experience the difference

FedEx Ship Manager® offers a wide range of new features to help your everyday operations run more smoothly and achieve smarter shipping processes. This version of the software is bundled with the following enhancements:

- Added support for Windows Server 2025.
- Improved End User License Agreement (EULA) by updating it to display in English, French, or Spanish based on selected country during installation or upgrade.
- Enabled shipping to Fiji with ETD support and FJD (Fijian Dollars) currency.
- Added support for international outbound and return shipments to Bulgaria, Cyprus, Ukraine, and Ireland with postal code-based rate quotes.
- Support for a new FedEx One Rate® Extra Small Box packaging option.
- Standardized upgrade overdue message display across both hardware and software devices.

Through continuous enhancements, FedEx Ship Manager® aims to help accommodate all your logistic requirements and facilitate a best-in-class shipping experience.

FedEx Ship Manager® enhancements

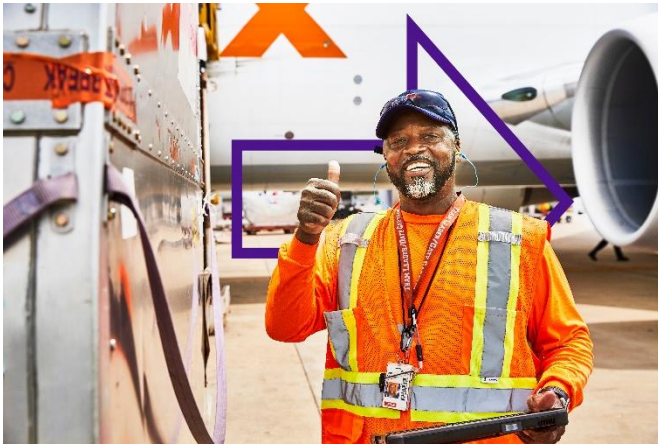
The **System/Account Number** screen is updated by removing the **IDD** and **Enable One Rate** options from the **FedEx Express Admin** tab, removing the **AOD** and **Special Services** checkboxes from **the FedEx Ground Admin** tab, and **Disable Auto Track** and **Disable Special Service Shortcuts** options are moved to the **FedEx Customer Admin** tab for better customer Experience.



The **'Department of State DCS'** checkbox has been removed from **Customer Information**, as this option is now enabled by default.



The **Registration** screen requires an **email address** that is saved to the **'Primary Email' field** for the **Master Meter**. This field is **mandatory**, and an **error message** will be displayed when its left **blank**.



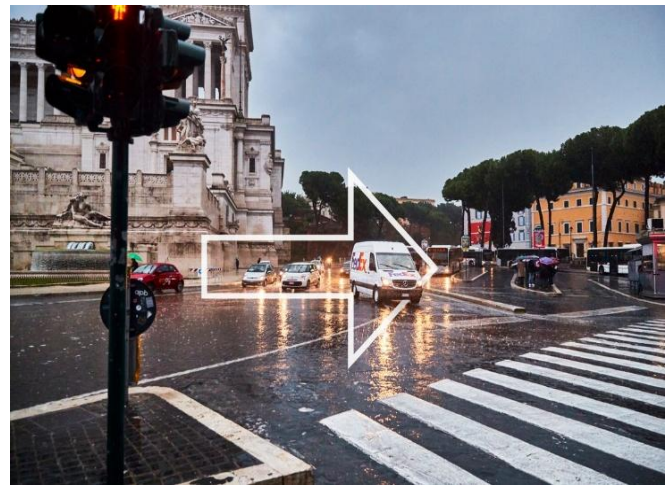
Upon launching FedEx Ship Manager® after **6 months**, you will be prompted to confirm the **email address**. This field is **mandatory**, and an **error message** will appear if it is left **blank**.



Now System/Account Number screen has been enhanced by **removing the promotional message** displayed below the 'Email Address' field across FedEx Ship Manager® **account registration screens**.



This version of FedEx Ship Manager® software allows you to process shipments to **Fiji as recipient country** including ETD with **currency type FJD (Fijian Dollars)**.



At the time of FedEx Ship Manager® application installation or upgrade, the **End User License Agreement (EULA) message** is displayed in **English, French, or Spanish**, depending on the country selected (U.S., CA, MX). Additionally, the EULA has been removed from the **utilities** menu.



The **hover-over images and the lines pointing** to those images have been removed from the **Import - Information and Export - Information** tabs.



The **COD option is no longer available** in the International Direct Distribution Shipping Profile for **FedEx Express Special Services and FedEx Ground Special Services**.



You can now **create international outbound and return shipments** for the following EU countries - **Bulgaria, Cyprus, Ukraine, and Ireland** and generate rate quotes based on the postal code.



This version is compatible with the **Windows Server 2025** operating system.



Improved shipping experience as **Express Domestic Return shipments** are **extended** for **Turkey (TR), Portugal (PT), and Slovakia (SK)**.



The **Freight Direct Delivery Service checkboxes** have been **replaced with radio buttons**, only one option can be selected. **“No Freight Direct,” has been added**, and **“Freight Direct Premium Economy” has been renamed to “Freight Direct Premium.”**



The **upgrade overdue message will now be displayed for both HW and SW devices**, so the same message is now shown across all devices



FedEx Extra Small Box is now available as a valid **FedEx One Rate®** packaging option. This enhancement expands the available **FedEx One Rate®** packaging selections, allowing customers to choose the **Extra Small Box** when creating **FedEx** shipments using the **FedEx One Rate®** pricing option. As with other **FedEx One Rate®** packages, **shipments must use FedEx-provided packaging.**

Learn More

To access and download the latest support documentation:

For US, visit <https://www.fedex.com/en-us/shipping/ship-manager/software.html> and click “Resources and Support.”

For Canada, visit <https://www.fedex.com/en-ca/shipping-services.html>

Help is also available through the FedEx Ship Manager Technical Support Center at 1.877.FDX Assist 1.877.339.2774. When prompted, say “FedEx Ship Manager Software”.